
Inside Plant Broadband Network Infrastructure





Data is the New Utility

Consumer households demand it more than both landline telephone and TV services. Governments want it to empower and strengthen their communities. Businesses require it to scale their access to customers. Power companies are using it to improve the reliability of their service delivery.

With the growing need for high-speed data, these services now primarily rely on fiber optics. Fiber optics cabling delivers long-distance transmission with a bandwidth that can support the varying needs of households, businesses, and industries using the same, scalable infrastructure.

Much of the critical infrastructure to support this “nerve system” of data transmission is housed in telecommunications buildings. While small, squat, and nondescript on the outside, the inside is teeming with world-class optical technology guaranteeing the performance of the network.

For 30 years, Panduit has been at the forefront of fiber optic technologies used in data center and central office communications. Our Innovation Center boasts some of the most advanced optical research in the industry. Our fiber infrastructure is trusted by government, financial, industrial, and technology companies to deliver world-class reliability, scalability, and support for whatever the future brings.

Let us help you plan and deliver the right solution for your inside plant.

Inside Plant Applications

Internet Service Provider (ISP)

Central offices and huts throughout the service provider network manage equipment, power, and fiber optic feeder and distribution cabling to provide an easy, flexible, and future-proof deployment.



Smart Grid

Remote Huts and Head Ends throughout the smart grid uses dense fiber networks to serve as the nerve center, collecting data from sensors across the grid and making changes in real-time to provide power resiliency.



Wireless

Frequencies are increasing to bring higher bandwidth support to fixed and mobile wireless endpoints. As more wireless radios are deployed closer together, the fiber distribution network becomes increasingly more important.

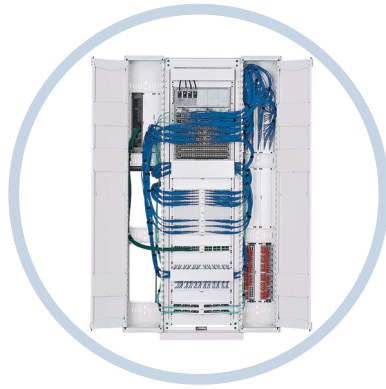


Middle Mile – Regeneration Huts

The middle mile fiber network allows each regional internet service provider to connect to the broader internet. Having a well-planned backbone is critical to providing broadband with enough bandwidth for everyone.



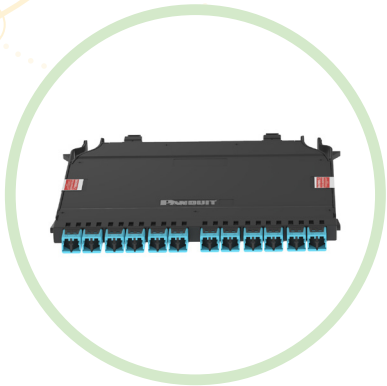
Inside Plant Broadband Solutions Overview



Racks and Cabinets

Accelerate deployment with a next-generation cabinet or rack with custom configurations to meet your network needs.

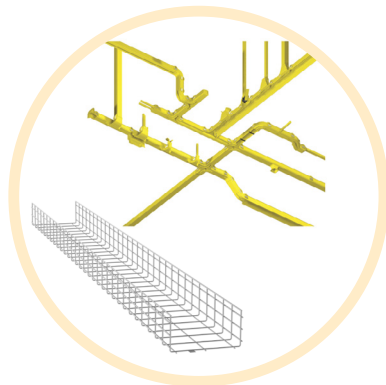
Page 6



Connectivity

Comprehensive fiber optic and copper systems that support advanced bandwidth and mission-critical physical infrastructures that deliver high performance, reliability, and scalability.

Page 10



Cable Routing and Pathways

Segregate, route, and protect fiber optic and high-performance copper cabling from distribution areas to equipment cabinets or racks.

Page 14



Power and Electrical

Monitor data center power by continuously scanning for electrical circuit overloads and environmental conditions that place critical IT equipment at risk.

Page 16

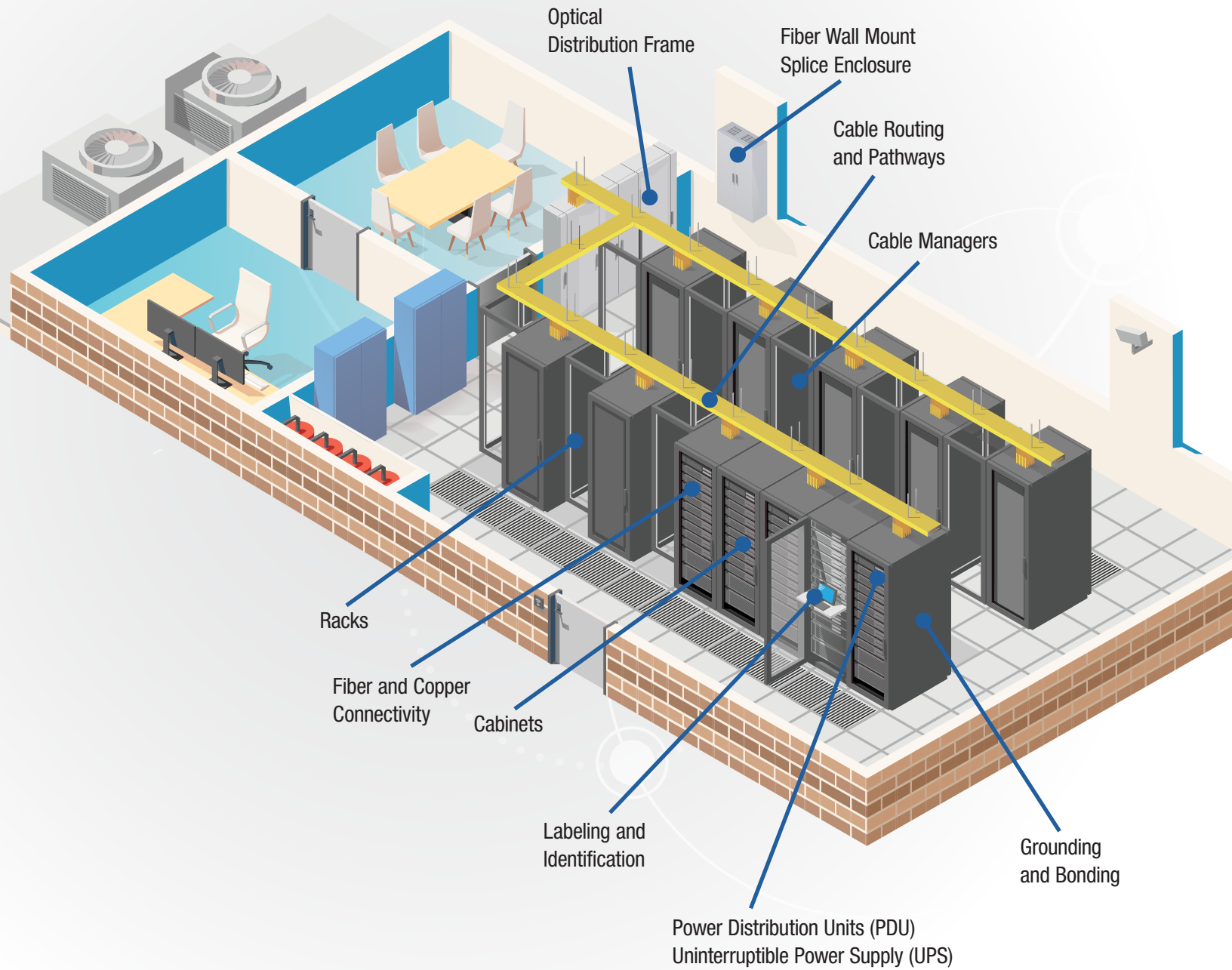


Labeling and Identification

Improve productivity, accuracy, and workplace safety with innovative labeling and identification.

Page 19

Inside Plant Broadband Solutions Roadmap



Racks & Cabinets

FlexCore™ Optical Distribution Frame

The FlexCore™ Optical Distribution Frame is a versatile front-access cabling system that provides the necessary protection for critical connections. Utilizing innovative cable management and simple, intuitive cable routing, the FlexCore™ ODF simplifies and reduces the time for moves, adds, and changes. With standard doors with locks and optional locks for each enclosure, the FlexCore™ ODF solution enables multi-tiered security that is important for multiple client access.



- Highly intuitive cable routing paths remove guesswork and prevents ‘rip and replace’ costs
- Innovative cable management and lockable vertical cable manager doors eliminate circuit risk and downtime
- Up to 3,168 fibers per frame when using standard 24 fiber cassettes
- Data center floor space can be reduced by 50%*
- Simplifies and reduces the time for moves, adds, and changes
- Multiple form factor (width) cassettes optimize rack space across wider applications
- Patch cords consolidated to a single length — freeing up capital locked in maintaining inventory
- Multi-layer security with lock capability available at both 4RU enclosure and ODF doors

*Assumes 4 double frames (2 double frames in a ‘back-to-back’ arrangement). Design conditions and configuration specifics apply.

For more information on our FlexCore™ Optical Distribution Frame solution, scan the QR code.



HD Fusion Fiber Wall Mount Splice Enclosure

Fiber Optic Splice Enclosures house, organize, manage, and protect cable-to-cable fusion splice connections and are common for both middle mile and central office entrance facilities. They can accommodate up to 6,912 fibers typically coming in from the outside of the building (OSP) which can be spliced to indoor or indoor/outdoor cabling. A variety of cable sizes are accommodated using movable panels with grommeted openings allowing the transition from larger fiber count cables to smaller counts. Splice trays can accommodate individual or ribbon fibers.



For more information on our HD Fusion Fiber Wall Mount Splice Enclosure solution, scan the QR code.



FlexFusion™ Cabinets

FlexFusion™ Cabinets offer a unique universal platform for all types of data centers, servicing needs of applications including central office, hyperscale, edge, and multi-tenant data centers. Built with a best-in-class weight load of 3,500 lbs. and doors with a maximum airflow of 80%, FlexFusion™ Cabinets can tackle your most challenging cabinet installations. Whether it's for server, network, or hybrid applications, FlexFusion™ Cabinets deliver performance to keep your networks running at optimal efficiency.



- Easy to adjust E-rails, PDU installation, and accessories to reduce installation time
- Solid construction with best-in-class load rating for secure installation
- Choice of key lock, 3-digit combo or HID electronic, and/or keypad lock
- Choice of tool-less fingers, vertical cable manger or front-to-back cable manager
- Turnkey deployment with pre-configured PDU, access control, and environmental monitoring
- Universal design for server or network applications
- 80% perforated doors for increasing power density in newer deployments
- Configuration platform to create cabinet to meet your specification and requirement



For more information on our FlexFusion™ Cabinet solution, scan the QR code.

Racks

4 post racks are designed to be an effective solution for the telecommunications room or network row. The rack can be used to manage high-performance copper and fiber patch cables.

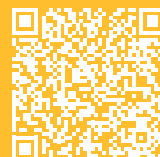


Part Number	Description
R4P36	4 post EIA rack with #12–24 threaded rails. Dimensions: 84.0”H x 23.25”W x 36.0”D (2134mm x 591mm x 914mm).
R4P	4 post EIA rack with #12–24 threaded rails. Dimensions: 84.0”H x 23.25”W x 30.0”D (2134mm x 591mm x 762mm).
R4PCN	4 post EIA rack with cage nut rails. Dimensions: 84.0”H x 23.25”W x 30.0”D (2134mm x 591mm x 762mm).

The **2 post standard** equipment rack provides a reliable foundation for mounting telecommunication and data center equipment. The rack can be used to manage high-performance copper and fiber patch cables.



Part Number	Description
R2P	2 post EIA rack with #12–24 threaded rails. Dimensions: 84.0”H x 20.3W x 3.0”D (2134mm x 516mm x 76mm).
R2P6S	2 post EIA rack with #12–24 threaded rails. Dimensions: 84.0”H x 20.3W x 6.0”D (2134mm x 615mm x 152mm).

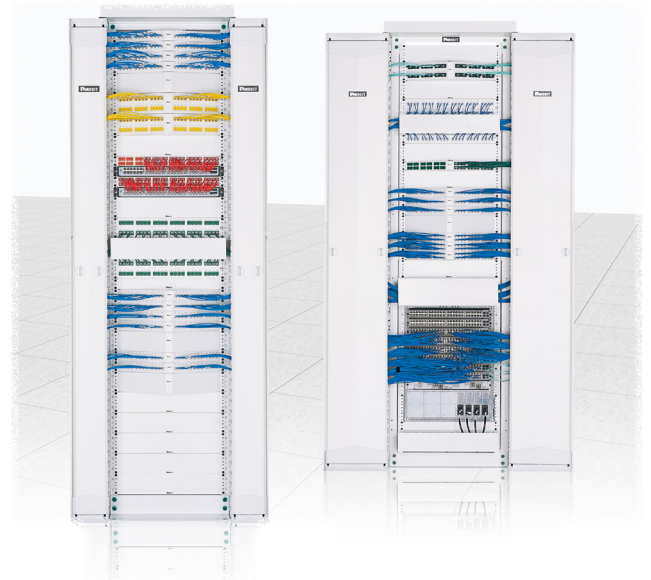


For more information on our full line of Racks, scan the QR code.

Cable Management Systems

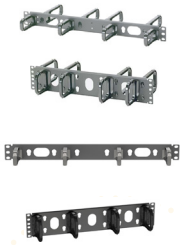
PATCHRUNNER™ 2 ENHANCED VERTICAL CABLE MANAGER

PatchRunner™ 2 Enhanced Vertical Cable Manager is designed to manage high density networking equipment in up to half the area required by traditional cable management systems. The reduction in square footage combined with fewer components ordered, inventoried, and installed results in significant cost savings for the network infrastructure.



OPEN-ACCESS™ HORIZONTAL CABLE MANAGER

The Open-Access™ Cable Manager provides open and efficient access to power, coaxial, and communications cables.



Part Number	RU	Height Inches (mm)	Width Inches (mm)	Depth Inches (mm)
CMPH1	1	1.7 (43)	19 (482)	8.6 (218)
CMPH2	2	3.5 (88)	19 (482)	8.6 (218)
CMPHF1	1	1.7 (43)	19 (482)	3.4 (87)
CMPHF2	2	3.5 (88)	19 (482)	3.4 (87)

For more information on our full line of Cable Management solutions, scan the QR code.



Accessories

OPEN-ACCESS™ VERTICAL D-RING



Part Number	Height Inches (mm)	Width Inches (mm)	Depth Inches (mm)
CMVDR1	2.38 (60.5)	2.05 (52.1)	5.72 (145.2)
CMVDR2	2.38 (60.5)	3.30 (83.8)	5.72 (145.2)

Can be used with both FlexFusion™ Cabinets and FlexCore™ Optical Distribution Frames

TAK-TAPE™ HOOK AND LOOP ROLL

The Tak-Tape™ Hook and Loop Cable Roll is constructed of soft, premium material that is safe to use on high performance cables to protect against over-tensioning. The hook and loop cable tie is adjustable, releasable, and re-usable making it ideal for applications requiring frequent moves, adds, or changes



Part Number	Description
TTR-35RX0	Tak-Tape™ Hook and Loop Cable Roll is 35' L x 0.75" W (6.1m x 19.1mm). The cable roll comes in packages of 10.

SMARTZONE™ SECURITY HANDLE

SmartZone™ G5 Security Handle is specially designed to meet the most rigorous of security challenges (both digital and physical) in today's data center environment.



Part Number	Description
ACF05	SmartZone™ Security Handle with dual frequency (125 kHz and 13.56 MHz) card reader and integral humidity sensor. All handles feature the base tumbler (TU020X) pre-installed at the factory.
ACF06	SmartZone™ Security Handle with dual frequency (125 kHz and 13.56 MHz) card reader, integral humidity sensor, and keypad for dual authentication

Connectivity

Fiber Optic Systems

Providing advanced bandwidth and mission-critical physical infrastructures with comprehensive fiber optic systems that deliver high performance, reliability, and scalability.

HD FLEX™ HIGH DENSITY FIBER CASSETTES



Part Number	Type	Connectors	Fiber Type	Polarity
FHC9N-12-10U	Cassette	1 MPO to 6 Duplex LC	OS2	Standard IL, Universal
FHS9N-12-10N		6-port LC Duplex Splice/No Pigtails	OS2	N/A
FHS9N-12-10P		6-port LC Duplex Splice/12 Pigtails	OS2	Standard IL
FHCZO-12-10U		1 MPO to 6 Duplex LC	OM4	Optimized IL, Universal
FHSXN-12-10N		6-port LC Duplex Splice/No Pigtails	OM4	N/A
FHSZO-12-10P		6-port LC Duplex Splice/12 Pigtails	OM4	Optimized IL
FHMP-6-ABL	FAP	6-port MPO	N/A	Type A (Key Up, Key Down)
FHS9N-12-3AP	Cassette	6-port SC APC Duplex Splice/12 pigtails	OS2	N/A
FHC9N-12-3GU	Cassette	1 MPO to 6 Duplex SC APC	OS2	Standard IL, Universal

4 and 12 port cassettes are also available

HD FLEX™ HIGH DENSITY FIBER ENCLOSURES



Part Number	Cassettes/ FAP Capacity	Cassette Type	Rack Units (RU)	Max Fiber Capacity
FLEX1U06*	12	4 or 12 for 4 Port or 12 Port Cassettes	1	144
FLEX2U06*	24		2	288
FLEX4U06*	48		4	576

HD FLEX™ HIGH DENSITY FIBER ACCESSORIES



Part Number	Description
FLEX-PLATE1U	HD Flex™ Enclosure Trunk Slack Plate – 1 RU.
FLEX-PLATE4U	HD Flex™ Enclosure Trunk Slack Plate – 4 RU.
FLEX-CM12S	HD Flex™ Universal Rear Cable Manager, 12-position transition managers with a screw mount bracket.
FLEX-CM18S	HD Flex™ Universal Rear Cable Manager, 18-position transition managers with a screw mount bracket.

Fiber Adapter and Cassettes

OPTICOM® FIBER ADAPTER PANELS



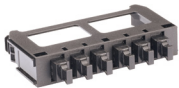
Part Number	Adapter Type	Fiber Type	Adapter Color
FAP6WAGDSCZ	SC APC Duplex	OS2	APC Green
FAP6WAQDSCZ	SC Duplex	OM4	Aqua
FAP6WBUDSCZ	SC Duplex	OS2	Blue
FAP12WAGDLCZ	LC APC Duplex	OS2	APC Green
FAP12WAQDLCZ	LC Duplex	OM4	Aqua
FAP12WBUDLCZ	LC Duplex	OS2	Blue

OPTICOM® ENCLOSURES



Part Number	Cassettes/FAP Capacity	Rack Units (RU)
FCE1U	4	1
FCE2U	8	2
FCE4U	16	4

QUICKNET™ SFQ MPO FIBER ADAPTER PANELS



Part Number	Polarity	Color
FQMAP66CG	Method B, Key-Up/Key-Up	Charcoal Gray
FQMAP65BL	Method A, Key-Up/Key-Down	Black

QUICKNET™ SFQ UNIVERSAL FIBER CASSETTES, 12 FIBER, 6 LC ADAPTERS



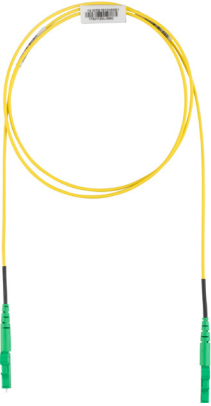
Part Number	Fiber Type	Performance
FQZO-12-10U	OM4	Optimized
FQ9N-12-10U	OS2	Standard

QUICKNET™ SFQ PATCH PANELS



Part Number	Description	No. Ports	No. RU
QPP24BL	The QuickNet™ Patch Panel accepts QuickNet™ Pre-Terminated Cassettes and Patch Panel Adapters and mount to standard EIA 19" racks or 23" racks with optional extender brackets.	24	1
QPP48HDBL		48	1

FIBER JUMPERS (PATCH CORDS)



Part Number	Fiber Type	Fiber Count	Cable Type (mm)	Jacket Type	Connectors	Length (m)
FZ2RPU1U1ONM001*	OM4	2	2mm Uniboot	Plenum (OFNP)	LC Duplex to LC Duplex	1
F92RPU1U1ONM001*	OS2	2	2mm Uniboot	Plenum (OFNP)	LC Duplex to LC Duplex	1
F92RPU2U2ONM001*	OS2	2	2mm Uniboot	Plenum (OFNP)	LC APC Duplex to LC APC Duplex	1
FZ23RSNSNSNM001*	OM4	2	3mm Duplex Zip Cord	Riser (OFNR)	SC Duplex to SC Duplex	1
F923RANANSNM001*	OS2	2	3mm Duplex Zip Cord	Riser (OFNR)	SC APC Duplex to SC APC Duplex	1
F91ERANB1SNM001*	OS2	1	1.6mm Simplex	Riser (OFNR)	SC APC Simplex to LC APC Simplex	1
F913RANANSNM001*	OS2	1	3mm Simplex	Riser (OFNR)	SC APC Simplex to SC APC Simplex	1
F91BNANNSNM001^	OS2	1	3mm Simplex	Riser (OFNR)	SC APC Simplex to Pigtail	1



* The last 3 digits indicate length. Fiber Jumper (Patch Cords) are available in lengths 001 to 050m
 ^The last 3 digits indicate length. Fiber Pigtails are available in 001,002,and 003m
 To configure your own fiber patch cords, visit www.panduit.com/configure-fiber-patch-cord.

FIBER TRUNK CABLES



Part Number	Fiber Type	Fiber Count	Jacket Type	Connectors	Polarity	Length (Ft.)
FYZTP77005F100*	OM4	12	Plenum (OFNP)	PanMPO™ Female to PanMPO™ Female with 1m breakouts, pulling eye end A	Method B, Optimized IL	100
FYZUP77005F100*		24				
FY9TP77B005F100*	OS2	12	Plenum (OFNP)	PanMPO™ Female to PanMPO™ Female with 1m breakouts, pulling eye end A	Method B, Standard IL	100
FY9UP77B005F100*		24				

*The last 3 digits indicate length. Fiber trunks are available in lengths 015 to 999 feet.
 To configure your own fiber trunk assemblies, visit www.panduit.com/configure-fiber-trunk.

FIBER INTERCONNECTS



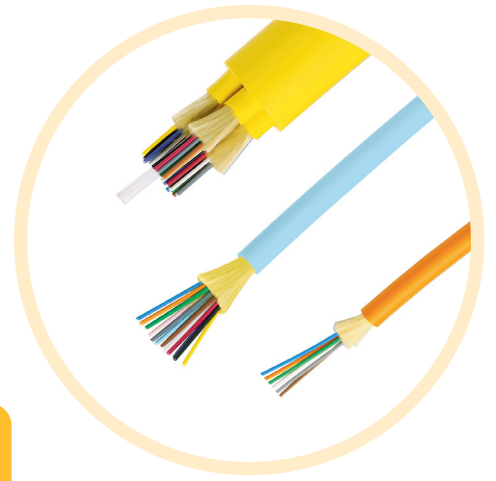
Part Number	Fiber Type	Fiber Count	Jacket Type	Connectors	Polarity	Length (Ft.)
FRZTP77Y001F001*	OM4	12	Plenum (OFNP)	PanMPO™ Female to PanMPO™ Female	Method B, Standard IL	1
FRZTP77Y001F002*						2
FRZTP77Y001F003*						3
FRZTP77Y001F005*						5
FR9TP77B001F001*	OS1/2	12	Plenum (OFNP)	PanMPO™ Female to PanMPO™ Female	Method B, Standard IL	1
FR9TP77B001F002*						2
FR9TP77B001F003*						3
FR9TP77B001F005*						5



*The last 3 digits indicate length. Fiber interconnects are available in lengths 001 to 300 feet.
 Pre-labeled fiber interconnects all come standard with RapidID labels for easy installation and identification

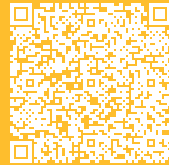
Bulk Fiber Optic Cable

Offering a wide range of fiber optic cable, including indoor cable, indoor/outdoor cable, and outside plant cable.



Indoor/Outdoor Fiber Optic Cable Solutions

For a full listing of Indoor/Outdoor Fiber Optic Cable solutions, scan the QR code.

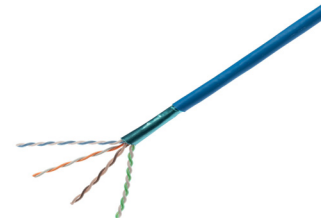
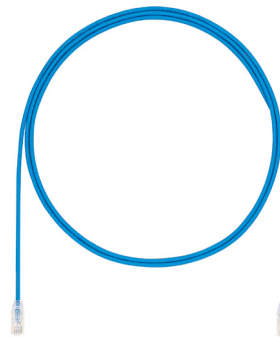


Indoor Fiber Optic Cable Solutions

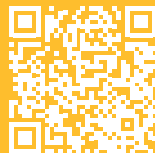
For a full listing of Indoor Fiber Optic Cable solutions, scan the QR code.

Copper Systems

Offering a full-line of innovative copper products that support all of today's most common IP applications including PoE and wireless technologies. Get the greatest value on the market, guarantee future reliability, and provide the foundation for your network's growth by choosing from our copper jack modules, patch cords, patch panels, punchdown systems, cable, and pre-terminated solutions.



For more information on our full line of Copper System solutions, scan the QR code.

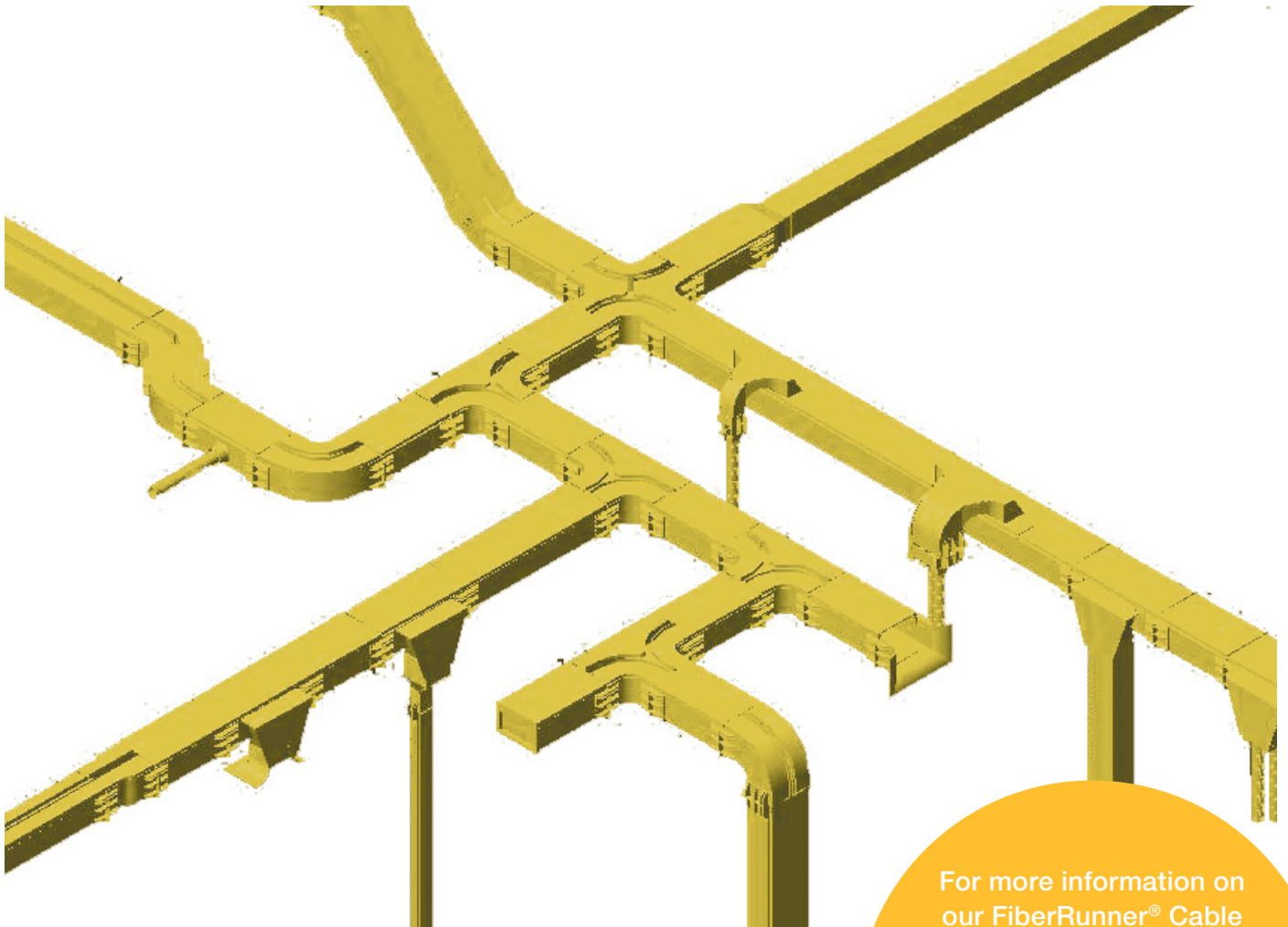


Cable Routing and Pathways

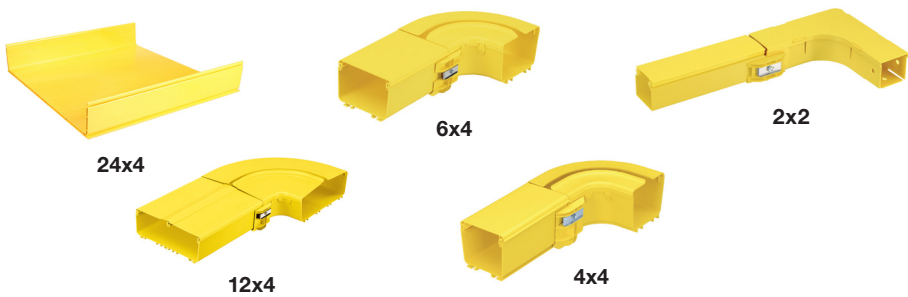
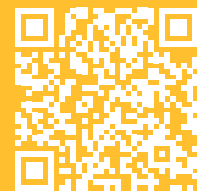
FiberRunner® Cable Routing System

The FiberRunner® Cable Routing System ensures maximum network reliability and reduced cost of ownership. Robust, highly engineered components with integral bend radius control surfaces can be configured to meet virtually any network application to provide optimum cable protection and assure network performance. Fast and easy to deploy, this scalable cable routing solution reduces installation cost and speeds implementation of new services.

For a full listing of FiberRunner® Cable Routing System sizes, accessories, options, and colors please visit www.panduit.com/fiber-runner

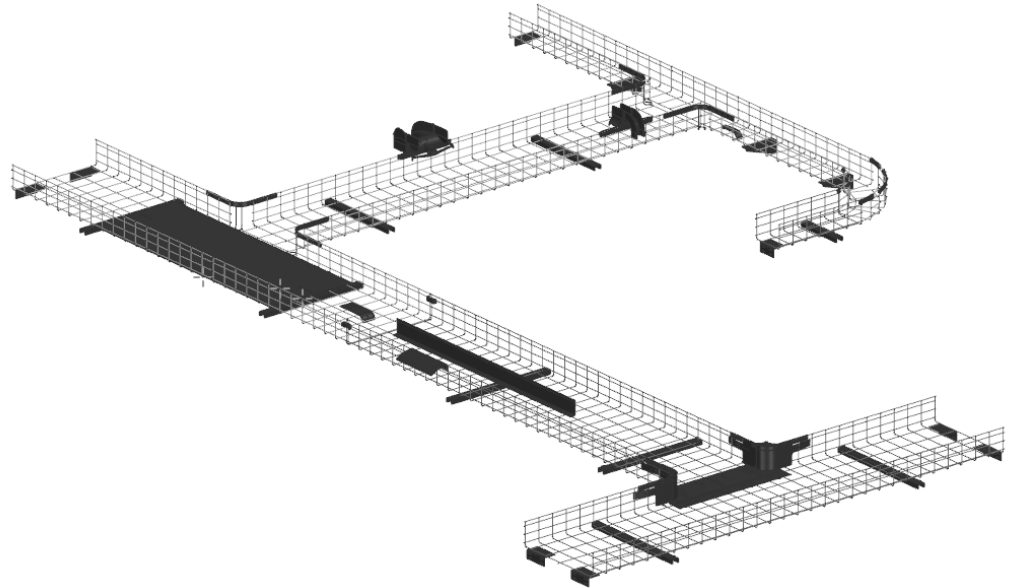


For more information on our FiberRunner® Cable Routing System solution, scan the QR code.



Wire Basket Overhead Cable Tray Routing System

The Wire Basket Cable Tray Routing System is designed to route and manage copper data cables, fiber optic, or power cables within a variety of settings, including central offices, data centers, connected buildings, and industrial automation applications. Innovative features provide quick, safe, and easy assembly for reduced installation costs and faster deployment.



For a full listing of Wire Basket Cable Tray Routing System sizes, accessories, options, and colors please visit www.panduit.com/wire-basket

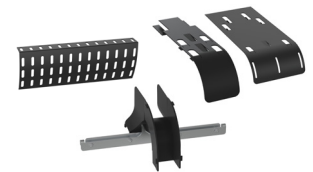
Basket Trays

Heights come in 2 inches, 4 inches, and 6 inches. Widths come in 4 inches, 6 inches, 8 inches, 12 inches, 18 inches, and 24 inches. Colors include black, white, and electro zinc.



Waterfalls

Variety of waterfall options supporting a variety of widths in colors of black and electro zinc.



Mounting Brackets

Variety of mounting bracket options with width sizes of 4 inches, 6 inches, 8 inches, 12 inches, 18 inches, and 24 inches. Colors include black, white, and electro zinc.



Tray Liners

Tray liners support widths of 12 inches, and 18 inches. Colors come in black and pre-galvanized.



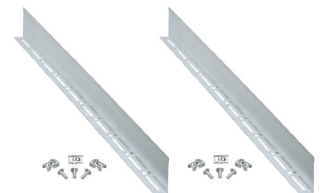
Hardware

Hardware options include splice and clip accessories that support a variety of sizes and come in colors of black and electro zinc.



Divider Walls

Divider walls support widths of 2 inches and 4 inches. Colors come in black and pre-galvanized.



Intersections

Intersection support basket heights of 2 inches and 4 inches with colors of black and electro zinc.



For more information on our Wire Basket Cable Tray Routing System solution, scan the QR code.

Power and Electrical

SmartZone™ G5 iPDUs

SmartZone™ G5 iPDUs monitor the data center power and the environment by continuously scanning for electrical circuit overloads and physical environmental conditions that place critical IT equipment at risk. By monitoring physical access points, the PDUs increase cabinet security to protect your systems and data. With some of the highest outlet densities and the smallest form factors available in the market, your cabinets will be functioning at their most resourceful state.



PRODUCT FAMILIES

Monitored Input (MI) Series

Input power monitoring

Monitored Switched (MS) Series

Input power monitoring and outlet switching

Monitored per Outlet (MPO) Series

Input and Outlet level power monitoring

Monitored and Switched per Outlet (MSPO) Series

Input and Outlet level power monitoring and outlet switching

Basic

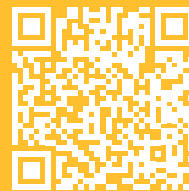
Reliable power distribution (non-network)

Accessories

A variety of environmental sensors, security devices, and power cords

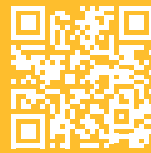
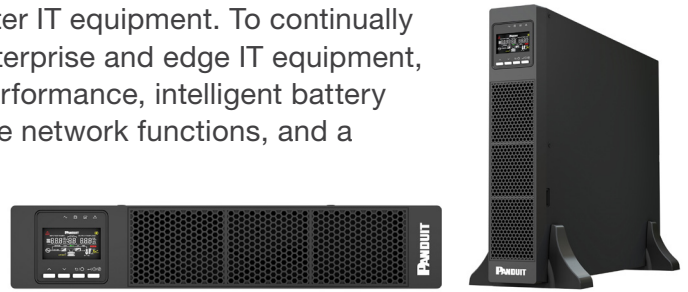
Note: All intelligent PDUs include capabilities for environmental monitoring and rack access control

For a full listing of our Intelligent Power Distribution Units, Accessories, and Power Cords, scan the QR code.



SmartZone™ Uninterruptible Power Supply

The SmartZone™ Uninterruptible Power Supply delivers highly efficient and reliable power protection and backup power for your computer IT equipment. To continually meet the growing power demands of data center, enterprise and edge IT equipment, the SmartZone™ UPS provides excellent electrical performance, intelligent battery management, enhanced intelligent monitoring, secure network functions, and a long lifespan for lithium units. Additionally, they comply with ENERGY STAR® 2.0, EMC, and safety standards and have been integrated with the SmartZone™ Cloud Next Generation DCIM Solution.



For more information on our line of Uninterruptible Power Supply solution, scan the QR code.

SmartZone™ Cloud

SmartZone™ Cloud Software is Panduit next generation Data Center Infrastructure Management (DCIM) solution. A true cloud-native platform, built from the ground up to take advantage of cloud flexibility and scalability as well as enhanced manageability, security, and operations ease of use and efficiency to manage data center, enterprise, and edge infrastructures. Supports the management, monitoring, and alerting for power, cooling, environmental, IT, and connectivity.



The secure cloud-based platform includes encryption on data at rest and in transit, two-factor authentication, and fine-grained access control. Other features include a security-focused development lifecycle that is hardened with multiple industry-leading security scanning and assessment solutions which are designed to thoroughly analyze today's complex web applications and web services for security vulnerabilities.



For more information on our SmartZone™ Cloud Software solution, scan the QR code.

Grounding and Bonding

Grounding and bonding solutions meet customer needs and today's critical application requirements for grounding data centers and telecommunication spaces. Panduit offers a wide variety of individual components and accessories to solve multiple grounding and bonding applications:



GROUNDING AND BONDING EQUIPMENT BONDING JUMPER KIT



Part Number	MCBN Conductor Size AWG	Description
RGCBNJ660P22	HTCT2-2.1	#6 AWG (16mm ²) jumper; 60" (1.52m) length; 45° bent lug on grounding strip side; provided with .16 oz. (5cc) of antioxidant, two each #12-24 x 1/2", M6 x 12mm, #10-32 x 1/2" and M5 x 12mm thread-forming screws and a copper compression HTAP* for connecting to the MCBN.

GROUNDING BUSBAR



Part Number	Description
Grounding Busbar Kits for Threaded Rail Fasteners	
RGRB19U	Grounding busbar; 19" (483mm) length; tin-plated; 20 holes arranged for flexibility in mounting with 20 #12-24 x 1/2" hex head screws installed; mounting hole sets have 5/8" (15.9mm) spacing; provided with two each #12-24 x 1/2", M6 x 12mm thread-forming screws, and two #12 flat washers for mounting.

GROUNDING STRIP



Part Number	Description
RGS134-1Y	Grounding strip; 78.65" (2m) length; .67" (17mm) width; .05" (1.27mm) thickness; provided with .16 oz. (5cc) of antioxidant, one grounding sticker and three each #12-24 x 1/2" and M6 x 12mm thread-forming screws.

GREEN BONDING CAGE NUT KIT



Part Number	Description
CNBK	Green bonding cage nut, includes 50 #12-24 bonding cage nuts (.06-.11 thick panel) and 50 #12-24 x 1/2" bonding screws with #2 Phillips/slotted combo hex head (use 5/16" or 8mm socket).

STRUCTUREDGROUND™ GROUNDING SYSTEM



Description
StructuredGround™ Grounding System provides high quality, visually verifiable, and dedicated grounding path to maintain system performance and protect network equipment and personnel. Panduit grounding and bonding components are designed for use on racks and cabinets which meet EIA-310.

For more information on our Grounding and Bonding solutions, scan the QR code.



Labeling and Identification

Offering a full line of **labeling products, software, and printers** to assist you with your labeling requirements. We also offer signs and permanent identification solutions to deliver improved productivity and workplace safety.



PRINTERS




Part Number	Description
MP300	The Panduit MP300 mobile label printer is the ideal solution for labeling in the field. Our printer offers a wide variety of die-cut and continuous label sizes up to 1.5" wide and an automatic cutter with capabilities for full and half cuts. With 360 dpi resolution and fast printing speed, the MP300 increases labeling productivity. Printer comes with one label cassette, hard carrying case, rechargeable battery pack, magnetic attachments, USB cable, and power adapter. Available only in North America.

CASSETTE LABELS



Part Number	Description
S100X150VAM	Vinyl self-laminating label cassettes can easily be installed on existing terminated wires and assemblies and does not require disconnecting wires or cables. Adhesive labels for wire/cable identification with white print-on area and clear overlamine. Label is 1.0" x 1.5", with 1.0" x 0.5" print-on area. Designed for Category 5e/6/6A UTP and Category 5e FTP/10 - 6 AWG cable. 175 labels per cassette.
R100X150V1M	Turn-Tell label cassettes, have an innovative design that allows label rotation to any angle for improved visibility, aesthetics, and easy repositioning. Label is 1.0" x 1.5" with 1.0" x 0.5" white print-on area and clear overlamine. It can easily be installed on existing terminated wires and assemblies and does not require disconnecting wires or cables. For use with Panduit MP series printers. 100 labels per cassette.

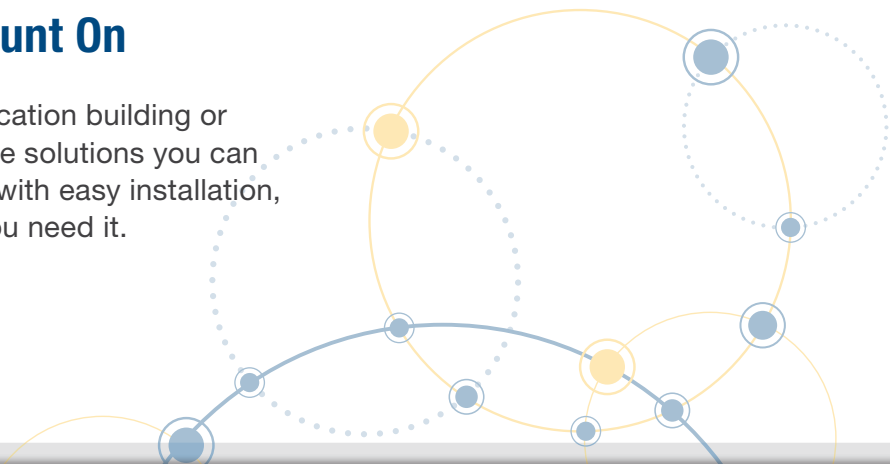


For more information on our line of Labeling and Identification solutions, scan the QR code.

Reliable Solutions You Can Count On

Whether you're building out a telecommunication building or extending fiber to the home, Panduit has the solutions you can trust to deliver reliable broadband service, with easy installation, and product availability where and when you need it.

Learn more about our broadband solutions at www.panduit.com/broadband.



Our most important connection is with you.

We have the knowledge and experience to help you make the most of your infrastructure investment.

www.panduit.com

Let's Connect
www.panduit.com/contact-us

PANDUIT®

