



INTESA  SANPAOLO

Company

Intesa Sanpaolo

Country

Italy

Sector

Smart Building/Finance

Challenges

Building a flexible, open and scalable network infrastructure capable of supporting the automation of a 30-story high skyscraper and the needs of multiple connected devices such as cameras, PoE access points, the building data center, telecommunications rooms, offices, meeting rooms, including all collaboration services

The Panduit solution

- 311 miles of Panduit copper and fiber optic cables
- Panduit Vari-MaTriX Technology solution
- ISO 14025 and ISO 21930 compliant connectors
- 22,000 copper and fiber connectors

Benefits

- The IT network supports and guarantees the services of internal automation, many security, communication and collaboration applications.
- The flexible infrastructure will allow growth and new applications in the coming years making this project scalable and constantly evolving.

Intesa Sanpaolo adopts Panduit network infrastructure for new headquarters

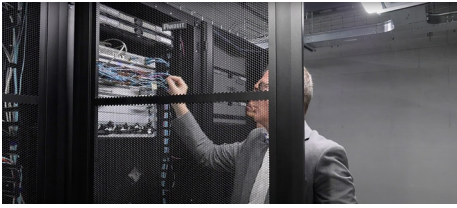
'Glass shard' is the nickname of one of Milan's iconic skyscrapers: Torre Gioia 22, located on Melchiorre Gioia Street in Milan. It is impossible not to notice this tall building, which is part of the Porta Nuova project, a new district in the financial area of Milan, Italy. The skyscraper is 397 feet high and houses one of the main offices of Intesa Sanpaolo, one of the leading banking groups in Europe. With a strong ESG commitment, it is in a world-leading position for social impact with a strong focus on climate.

The building consists of 30 floors (four of which are underground) with a total gross floor area of 736,596 square feet. Torre Gioia 22 has achieved LEED certification, thanks to a Cradle-to-Cradle approach in the choice of materials. The tower has over 64,583 square feet of solar panels with a high level of sustainability; unquestionably a green and smart building, ensuring a balance between energy produced and consumed is close to zero.

THE CHALLENGE

A building with such a large surface area in square feet, with a height of 397 ft., 30 floors including 4 underground, and a multitude of users, offices, meeting rooms, services and connected devices to support, required a flexible and scalable network infrastructure.

The infrastructure needed to support the automation of the building as well as connected devices such as cameras, PoE-powered access points, the building data center, telecommunication rooms, offices, meeting rooms, including all collaboration services.



PANDUIT SOLUTION

The client's team, which included Panduit and System Integrator and Gold Partner, STIM Tech Group, developed a flexible cabling infrastructure project that would allow the growth of end points and applications in the coming years based on Panduit technology.

The IT network implemented to cover the needs of both the basement and office floors consists of almost 311 miles of Panduit copper and fiber optic cables. The IT planning department chose Panduit Vari-MaTriX Technology solution and connectors conforming to ISO 14025 and ISO 21930 standards. EPD and HPD certified connectivity solutions provided points for LEED V4 certification.

With point-to-point connections and structured cabling links, the building has more than 22,000 connections. This provided flexibility in designing shared spaces and the cabling to support work areas.

Intesa Sanpaolo selected intelligent cabinets with integrated sensors, secure doors, maximum heat dissipation, and very high connection density and intelligent PDUs for the central data center and telecommunications rooms, along with structured cabling solutions throughout the building. Numerous accessories completed this important and unique building computerization project from an engineering point of view, based on new design and installation standards.

BENEFITS FOR THE CUSTOMER

The resulting IT network supports and guarantees building automation services, along with many security, communication and collaboration applications.

The reduction of energy requirements by up to 75 percent makes Gioia 22 a building with a high level of sustainability. The flexible infrastructure will adapt to growth and new applications in the coming years. This makes the project scalable and flexible and a perfect example of the strength and value of the ecosystem. This achievement will serve as an example to follow.

Watch the [video case study](#).

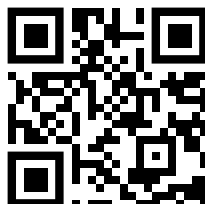
“Panduit’s highly scalable and flexible network infrastructure has enabled us to address building integration and automation needs, improving the operational efficiency of interconnected assets and laying the foundation to support future applications. In addition, the synergy between the teams of Panduit and STIM Tech Group allowed us to always meet the deadlines and the quality of the end result.”

— **Gianluca Salvadori**
Senior It Infrastructure Engineer, GT Digital & Cloud Tecnology - Intesa Sanpaolo

PANDUIT™

Panduit Corp.
World Headquarters
Tinley Park, IL 60487

cs@panduit.com
US and Canada: 800.777.3300
Europe, Middle East, and Africa:
44.20.8601.7200
Latin America: 52.33.3777.6000
Asia Pacific: 65.6305.7575



For more information visit:
www.panduit.com