

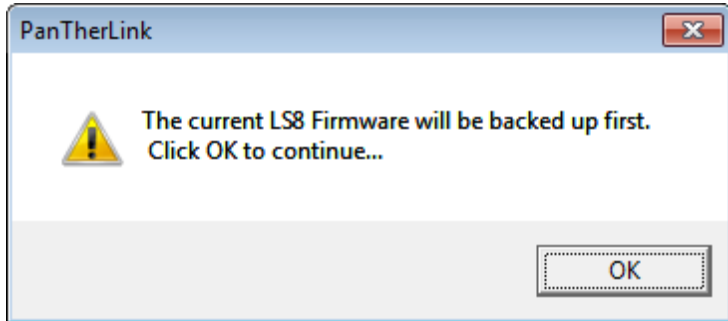
## Upgrading the PanTher™ LS8E / LS8EQ Hand-Held Thermal Transfer Printer Firmware

1. Firmware updates are delivered through PanTherLink™ software. To access the latest LS8E/LS8EQ firmware the latest version of PanTherLink™ must be downloaded and installed on your computer.
2. This download can be found at [http://www.panduit.com/ccurl/232/677/plink\\_v14.exe](http://www.panduit.com/ccurl/232/677/plink_v14.exe) . Download the file and following prompts to install the new version of PanTherLink™ software.
3. Once the installation of PanTherLink™ is complete open PanTherLink software.
4. Set the LS8E/LS8EQ printer into USB Upgrade Mode by holding the F5 button and power the LS8E printer on. Release the power button while holding the F5 button when the screen shows F5-Upgrade Mode. The printer is now ready to receive the Firmware upgrade.
5. In PanTherMark select [Firmware] then [Upgrade Firmware] from the toolbar.
6. Press [OK] on the screen.

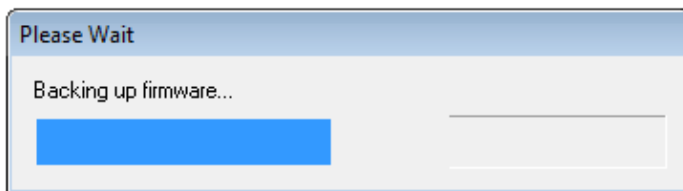


7. PanTherLink will first backup the current firmware on the printer. Click OK to continue.

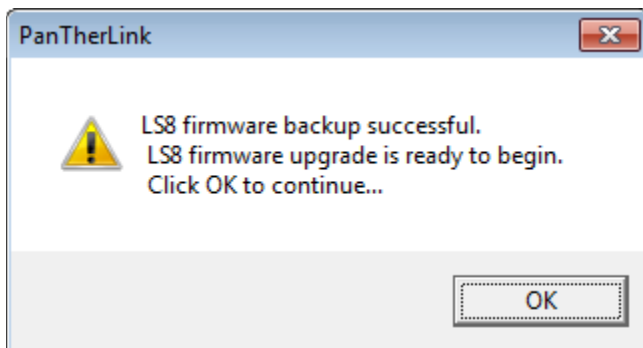




8. The current firmware will be backed up first. A progress bar will show for this process.



9. Click OK to continue after the firmware has been backed up.

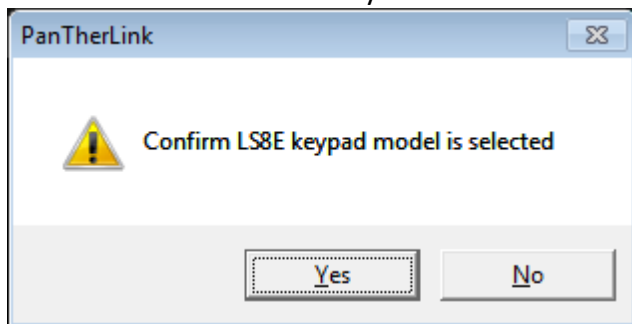


10. Select the model of the printer from the picture on the screen. LS8E or LS8EQ. Click on the picture of your model printer.

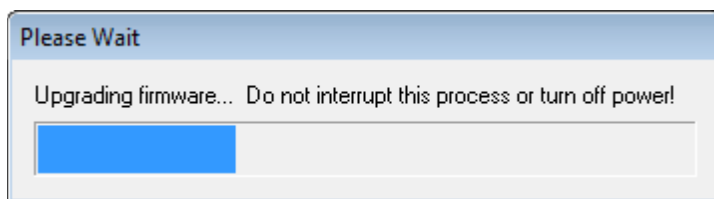




11. Click YES to confirm your model.



12. The Upgrading Firmware progress bar will appear. The LS8E printer screen will display Receiving Firmware. The upgrade takes approximately 3 minutes to complete.

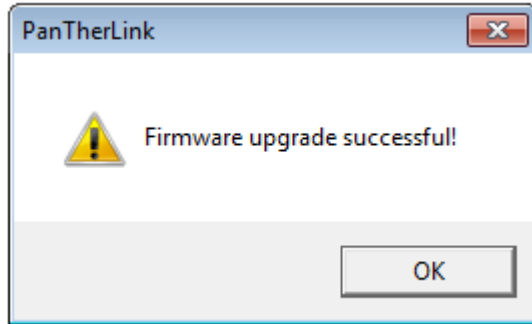


13. DO NOT INTERRUPT THE UPGRADING PROCESS!

14. Once the Firmware upgrade successful message appears on your computer, Click OK.

Unified Physical Infrastructure





15. The LS8E/LS8EQ printer will reboot automatically after the upgrade.

