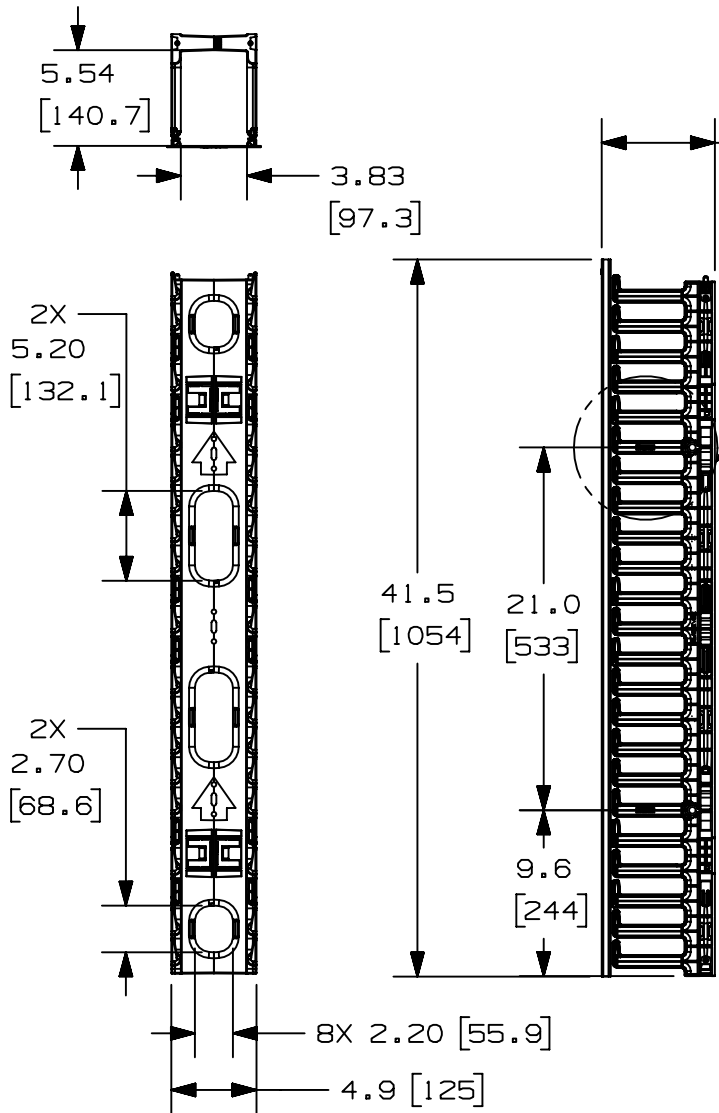


THIS COPY IS PROVIDED ON A RESTRICTED BASIS AND IS NOT TO BE USED IN ANY WAY DETRIMENTAL TO THE INTERESTS OF PANDUIT CORP.

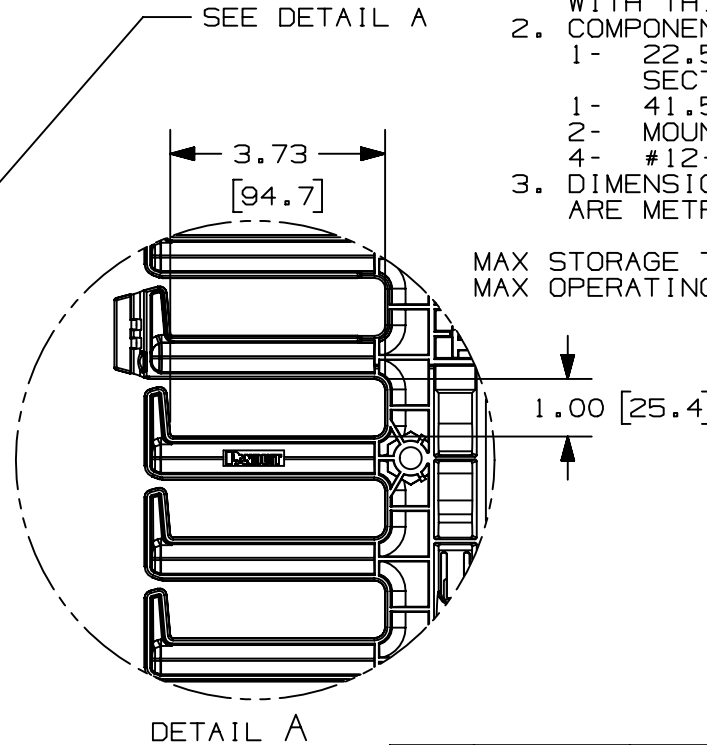
PANDUIT P/N	WEIGHT
WMPVF22E	8.0 lbs/EACH 3.63 kg/EACH

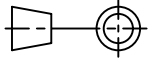


NOTES:

- VISIT OUR ON-LINE CATALOG AT WWW.PANDUIT.COM FOR A CURRENT LIST OF PRODUCTS APPLICABLE FOR USE WITH THIS PART.
- COMPONENTS:
 - 22.5RU CABLE MANAGEMENT SECTIONS
 - 41.5" DUAL HINGE COVERS
 - MOUNTING BRACKETS
 - #12-24 X 1/2" SCREWS
- DIMENSIONS IN PARENTHESES ARE METRIC.

MAX STORAGE TEMPERATURE 65°C (149°F)
MAX OPERATING TEMPERATURE 60°C (140°F)



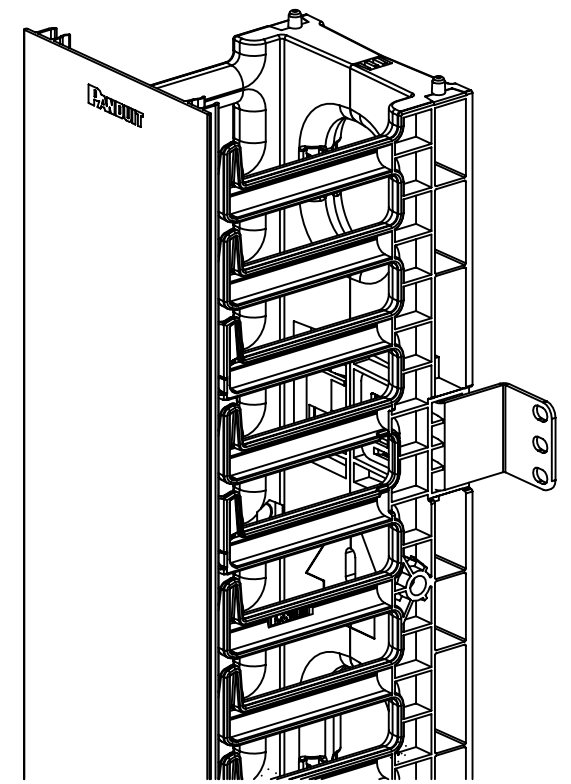
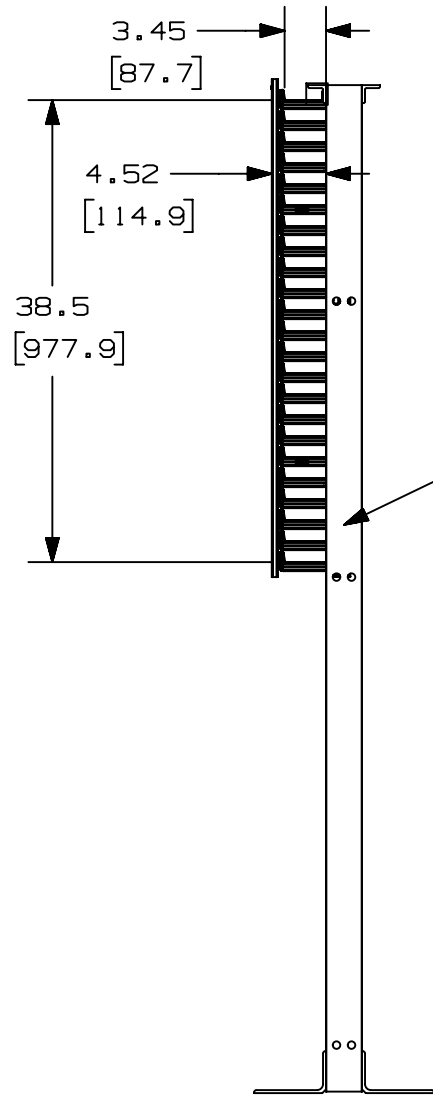
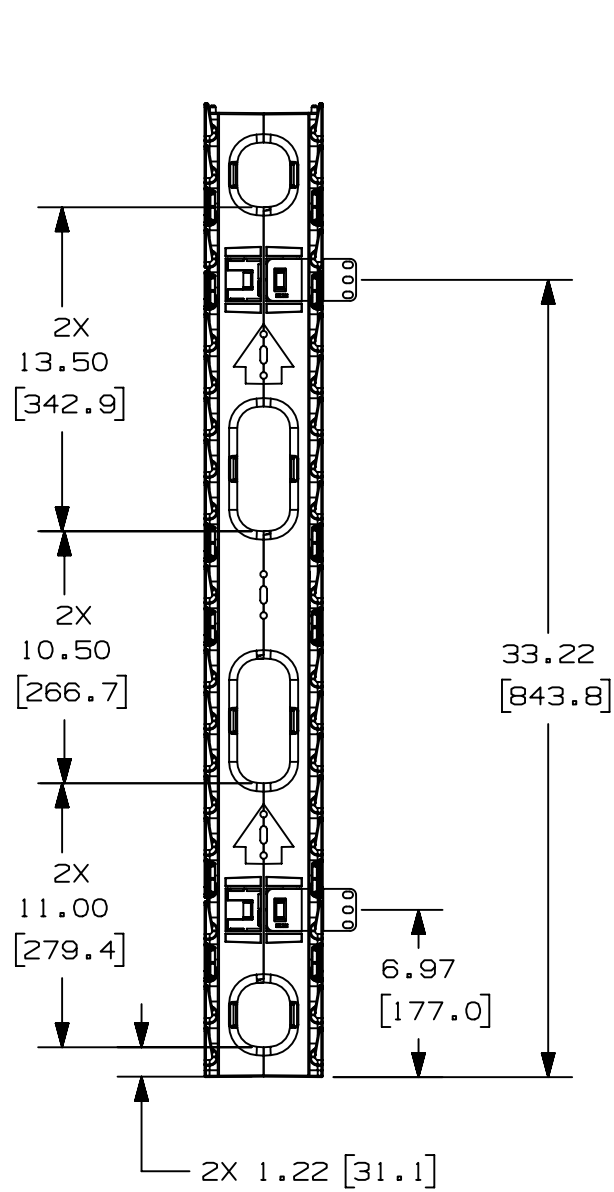
TITLE												
4" WIDE FRONT ONLY VERTICAL CABLE MANAGER WMPVF22E												
CUSTOMER DRAWING												
ITEM REVISION NAME					V10225AF/06							
DATASET FILE NAME					V10225AF_DC/06A							
					THIRD ANGLE PROJECTION							
MATERIAL					CABLE MANAGER- ABS COVER- PVC							
DRAWING NUMBER					10225-28							
REV	DATE	BY	CHK	APR	DESCRIPTION	ECN	DRAWN BY	DATE	CHK	SCALE	SHEET 1 OF 2	SIZE
06A	3-23-23	JBO	KRKE	KCOR	UPDATED TRI VIEW TO SHOW LOGO ON COVER	M09000SE	JDWE	3-15-05	MWH	NONE		A

A-SIZE CUSTOMER

THIS COPY IS PROVIDED ON A RESTRICTED BASIS AND IS NOT TO BE USED IN ANY WAY DETRIMENTAL TO THE INTERESTS OF PANDUIT CORP.

B

A



B

A

TITLE 4" WIDE FRONT ONLY VERTICAL CABLE MANAGER WMPVF22E										
CUSTOMER DRAWING										
ITEM REVISION NAME V10225AF/06					PANDUIT					
DATASET FILE NAME V10225AF_DC/06A										
MATERIAL CABLE MANAGER- ABS COVER- PVC					DRAWING NUMBER 10225-28					
DRAWN BY JDWE					DATE 3-15-05		CHK MWH		SCALE NONE	
SHEET 2 OF 2					REV		DATE		SIZE A	

A-SIZE CUSTOMER

REV	DATE	BY	CHK	APR	DESCRIPTION	ECN
--	--	--	--	--	REFER TO SHEET 1 FOR REVISION CONTROL	--