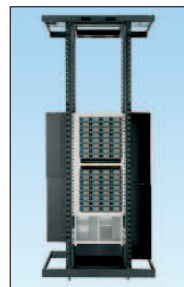


Net-Access™ 1000mm Wide N-Type Cabinets and Net-Direct™ Ducting Solution for the Cisco^ Nexus 7018 Switch

specifications

The Panduit 7018 cabinet and duct solution shall be designed to be compatible with the Cisco^ Nexus 7018 switch using Computational Fluid Dynamics (CFD) modeling and verified via operational testing. These ducts shall feed cool air from the cold aisle to the switch and prevent hot air recirculation. Various ducts offered to cover both hot aisle and cold aisle containment and non-containment applications. These modular ducts shall be capable of being installed in a retro-fit application without disrupting the existing in-cabinet equipment and cabling. The 39.5" W (1003mm) x 48"D (1219mm) footprint shall meet the Cisco open area requirement on either side of the switch with load rating at 2500 lbs. (1134 kg).



technical information

Dimensions Ducting:	DIEBCC7018B: 50.53"L x 37.43"W x 40.37"D (1283.6mm x 950.76mm x 1025.5mm) DIRLD0425S27W: 48.41"L x 18.309"W x 25.94"D (1229.78mm x 465.05mm x 658.96mm) DIRLC7018VP51: 48.41"L x 18.309"W x 25.94"D (1229.78mm x 465.05mm x 658.96mm) DIRLC7018VP4248: 48.41" L x 18.309"W x 25.94"D (1229.78mm x 465.05mm x 658.96mm)
----------------------------	---

Dimensions Cabinets:	42 RU 31.5"W x 78.8"H x 48.0"D (800mm x 2000mm x 1219mm) 45 RU 31.5"W x 84.0"H x 48.0"D (800mm x 2134mm x 1219mm) 48 RU 31.5"W x 98.3"H x 48.0"D (800mm x 2267mm x 1219mm)
-----------------------------	--

key features and benefits

Passive airflow	No additional moving parts or power required for a more reliable, efficient, economical, and environmentally friendly system
Physical separation between inlet and exhaust airflow	Segregates inlet and exhaust airflow preventing hot air recirculation, reducing inlet temperatures up to 17°C (30°F)
Maximized space utilization	Allows the switch to be deployed in a 1000mm wide Panduit cabinet without sacrificing thermal performance
Energy efficiency	Provides cool air to the switch resulting in lower fan speed, reducing fan power consumption by up to 250W and improving reliability
Day one or two installation	Eliminates the requirement to replace or disturb existing cabinets, equipment and infrastructure for lower capital expenditures and minimized risk
Easy access	Allows access to the power supplies and fan modules minimizing network downtime
Integral bonding to cabinet	Cabinets and accessories are single-point bonded, providing a safe and reliable network, while reducing installation costs
Versatility	Cabinet designs offered in 42 RU, 45 RU, and 48 RU heights which are optimized for specific applications to allow improved thermal efficiencies resulting in reduced energy costs
Rapid deployment	Cable management included to speed deployment; adjustable rear rails can be quickly repositioned
Reliability	Thermal performance verified through Cisco lab testing by thermal engineers earning Cisco Certified designation
Bonding	Cabinets and accessories are single-point bonded, providing a safe and reliable network, while reducing installation costs
Modular cable management fingers	Provides bend radius control for each rack unit and can be positioned where required along the two front posts and two rear posts for cable protection and increased network availability; provides design flexibility, scalability, and improved aesthetics for easier moves, adds, and changes

applications

Cisco^ Nexus 7000 series switches are a modular switching system designed to deliver 10 Gigabit Ethernet and beyond. Panduit has developed a comprehensive physical infrastructure solution for the Nexus 7018 switch platform. When the Cisco^ Nexus 7018 switch is used as an access layer switch, it could be deployed using a Panduit Pod strategy that employs an End of Row (EoR) or Middle of Row (MoR) physical topology in the

Equipment Distribution Area (EDA) of the data center. If deployed as an aggregation or core switch, it could be located in the Main Distribution Area (MDA) of the data center. By providing a path for cool air to the switch, data center temperature set points can be raised, resulting in higher energy efficiencies and lower operating costs.

^Cisco is a registered trademark of Cisco Technology, Inc.

Thermal Inlet and Exhaust Ducts

Inlet/exhaust duct:	DIEBCC7018B
Inlet duct:	DIRLD0425S27W
Inlet duct:	DIRLC7018VP51
Inlet duct:	DIRLC7018VP4248

Net-Access™ N-Type Cabinets for Use in Hot Aisle/Cold Aisle Applications*

Net-Access™ N-Type Cabinet frame with top panel, tapped #12-24 rails, no front door, no rear doors, no side panels. Cable management on front and rear of front posts:

800mm W x 42 RU x 1200 D:	N8229BS^^
800mm W x 45 RU x 1200 D:	N8529BS^^
800mm W x 48 RU x 1200 D:	N8829BS^^

Net-Access™ N-Type Cabinet frame with top panel, tapped #12-24 rails, no front door, no rear doors, solid side panels (2), cable management on front and rear of front posts:

800mm W x 42 RU x 1200 D:	N8222BS^^
800mm W x 45 RU x 1200 D:	N8522BS^^
800mm W x 48 RU x 1200 D:	N8822BS^^

Perforated Split Doors for 1000mm Wide Net-Access™ N-Type Cabinets

42 RU:	N2SD1000‡
45 RU:	N5SD1000‡
48 RU:	N8SD1000‡
51 RU:	N1SD1000‡

1000mm Solid Split Doors for 1000mm Wide Net-Access™ N-Type Cabinets

42 RU:	N2SSD1000
45 RU:	N5SSD1000
48 RU:	N8SSD1000
51 RU:	N1SSD1000

Net-Access™ N-Type Side Panels

42 RU:	N22SPS‡
45 RU:	N52SPS‡
48 RU:	N82SPS‡

Net-Access™ N-Type Cabinet Accessories

Extension kit:	N1000EXT
Extension kit for VED ready cabinet:	N1000EXTV
Extension kit for Integral cabinet top cabinet:	N1000EXTCR
Extension kit VED ready and integral cabinet top cabinet:	N1000EXTCRV
Extended PDU bracket for N-Type 7018 Cabinet:	NVPDUB7018
Net-Access™ Cabinet Vertical Adjustable Blanking Panel for Cisco^ Nexus 7018 42 – 48 RU:	NVBPA7018B

*Use extension kit, N1000EXT to expand 800mm wide x 1200 deep Net-Access™ N-Type Cabinets to 1000mm.

^^Indicates optional colors. Replace B = Black with W = White.

‡Must purchase two pieces if front and rear doors are required.

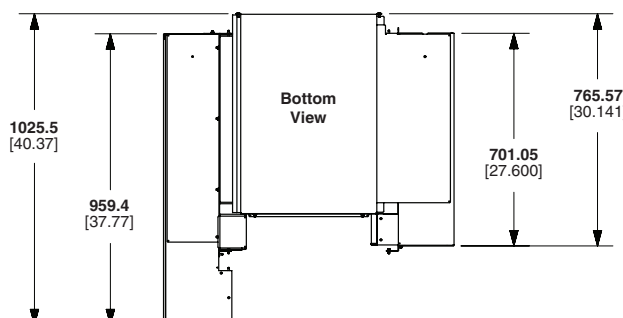
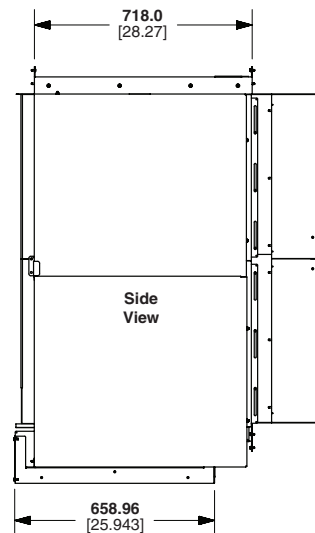
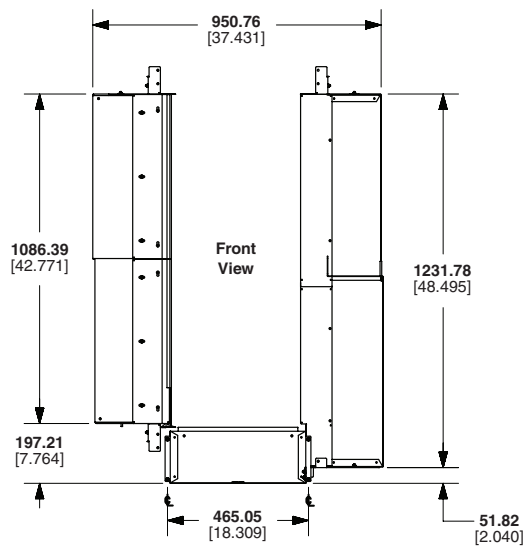
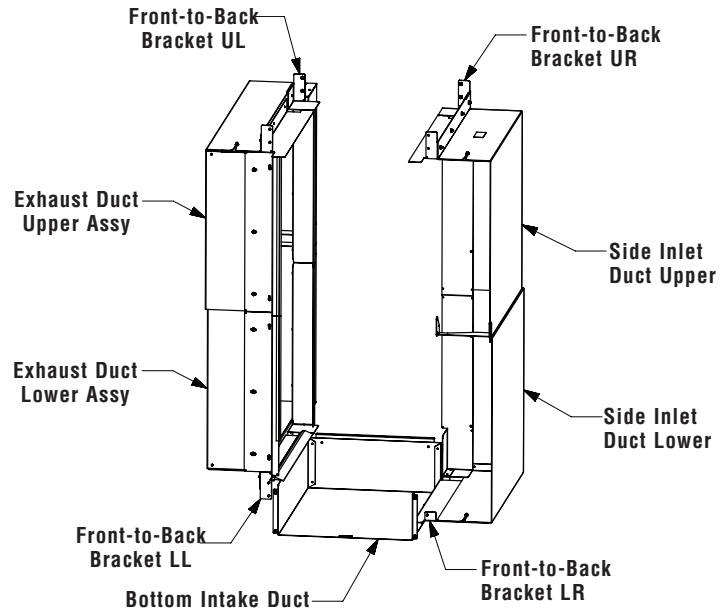
‡‡Must purchase two pieces if both side panels are required.

Net-Access™ 1000mm Wide N-Type Cabinets and Net-Direct™ Ducting Solution for the Cisco^ Nexus 7018 Switch

selection chart for 7018 ducts

Part number	Application
DIEBCC7018B	Non-containment, without vertical blanking panel.
DIRLD0425S27W	Containment, includes left and right vertical blanking panel.
DIRLC7018VP51	Containment, includes left and right vertical blanking panel.
DIRLC7018VP4248	Containment, includes right vertical blanking panel only.

Inlet/Exhaust Duct DIEBCC7018B

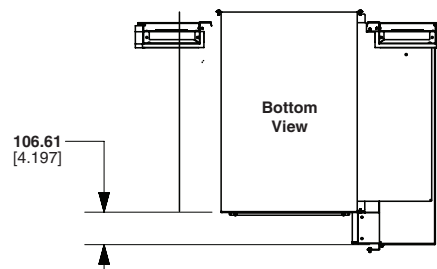
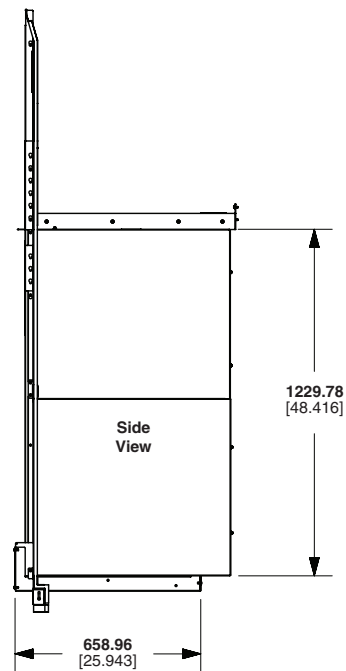
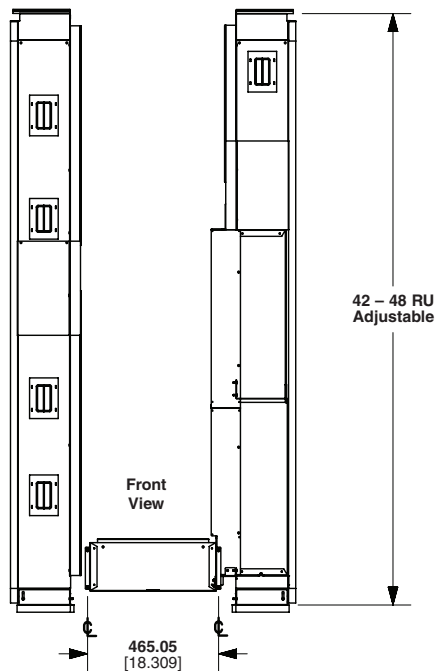
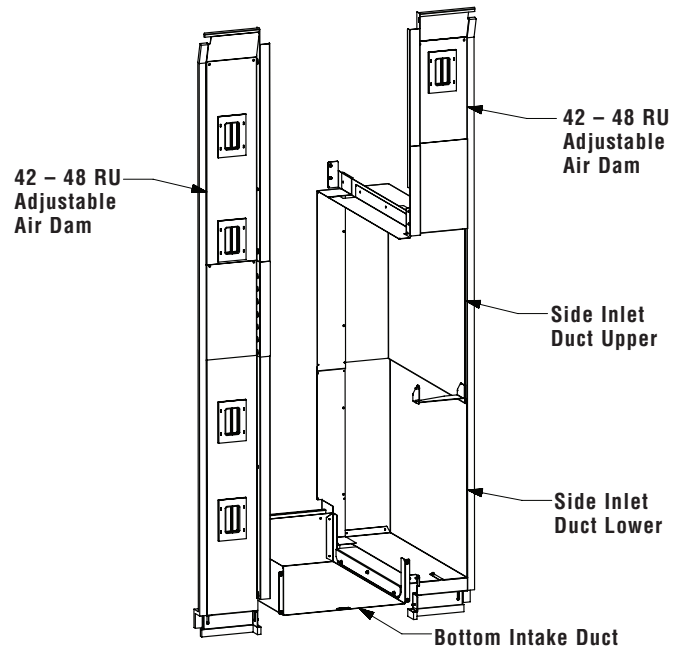
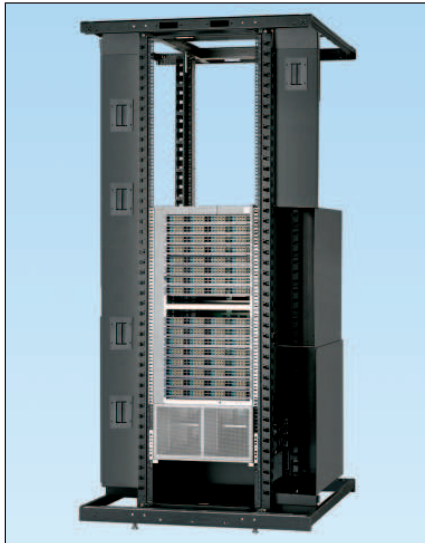


**E-Rail Depth Must Be 657.76mm
25.896in.**

Dimensions are in millimeters. (Dimensions in brackets are inches.)

Net-Access™ 1000mm Wide N-Type Cabinets and Net-Direct™ Ducting Solution for the Cisco^ Nexus 7018 Switch

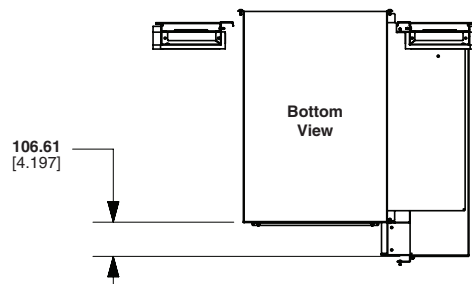
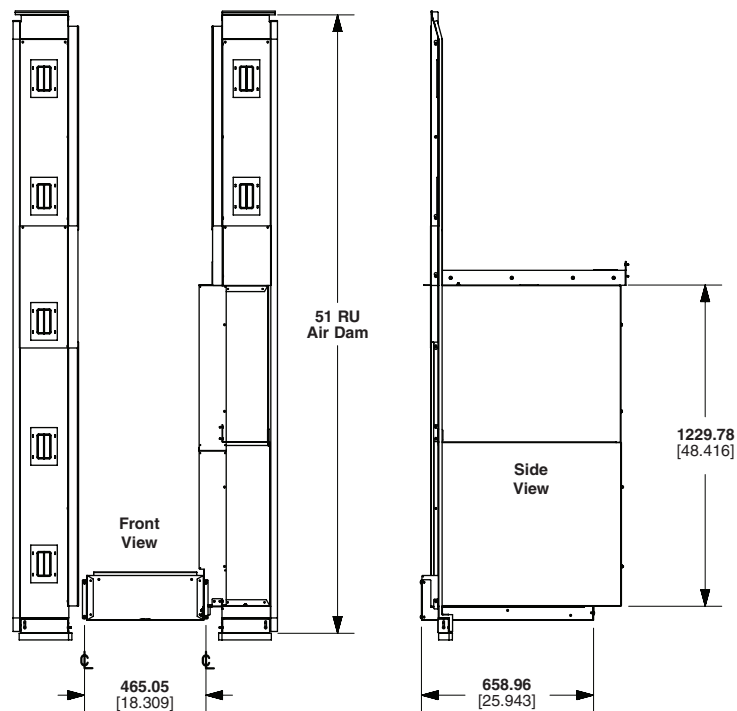
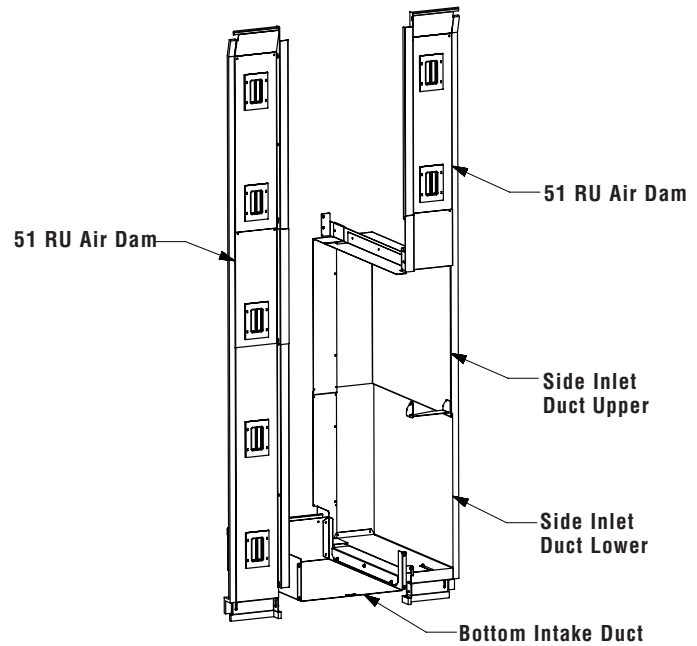
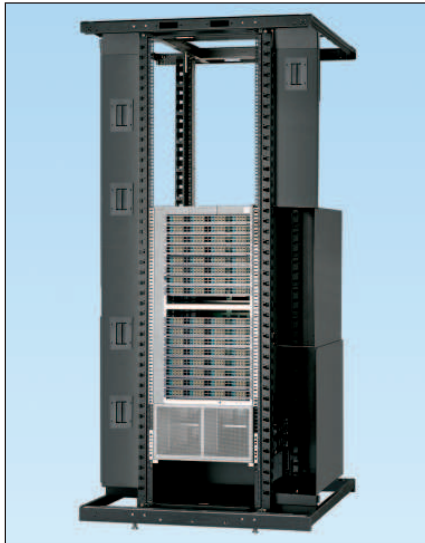
Inlet Duct DIRLD0425S27W



E-Rail Depth Must Be 657.76mm
25.896in.

Net-Access™ 1000mm Wide N-Type Cabinets and Net-Direct™ Ducting Solution for the Cisco^ Nexus 7018 Switch

Inlet Duct DIRLC7018VP51

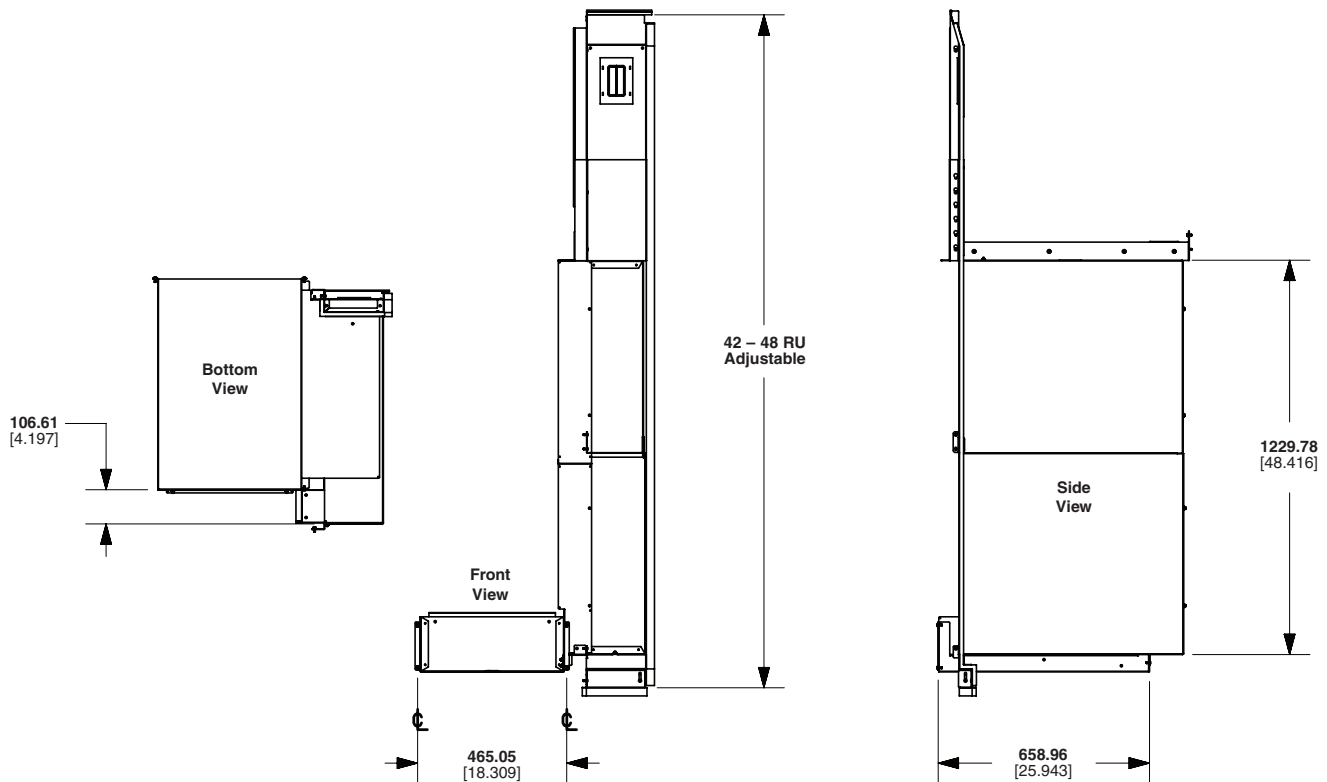
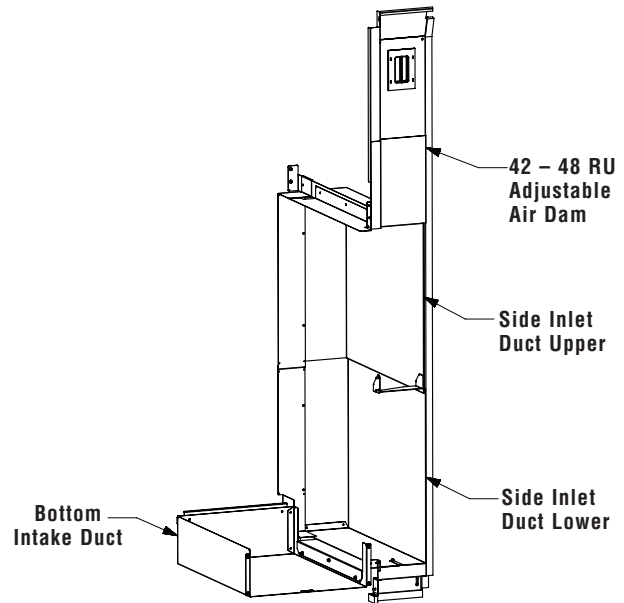


E-Rail Depth Must Be 657.76mm
25.896in.

Dimensions are in millimeters. (Dimensions in brackets are inches.)

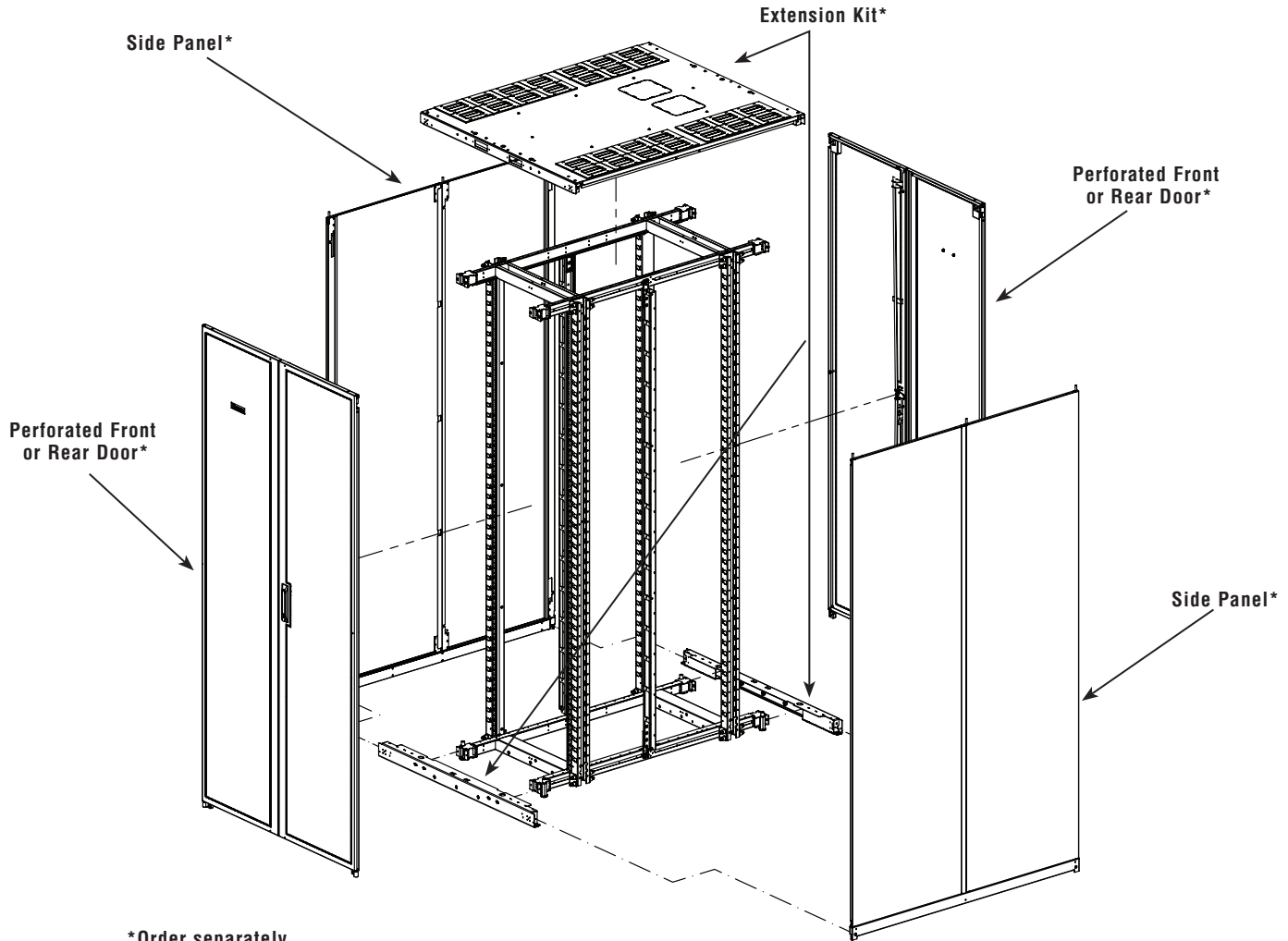
Net-Access™ 1000mm Wide N-Type Cabinets and Net-Direct™ Ducting Solution for the Cisco^ Nexus 7018 Switch

Inlet Duct DIRLC7018VP4248



E-Rail Depth Must Be 657.76mm
25.896in.

Net-Access™ 1000mm Wide N-Type Cabinets and Net-Direct™ Ducting Solution for the Cisco^ Nexus 7018 Switch



*Order separately.

WORLDWIDE SUBSIDIARIES AND SALES OFFICES

PANDUIT CANADA
Markham, Ontario
cs-cdn@panduit.com
Phone: 800.777.3300

PANDUIT EUROPE LTD.
London, UK
cs-emea@panduit.com
Phone: 44.20.8601.7200

PANDUIT SINGAPORE PTE. LTD.
Republic of Singapore
cs-ap@panduit.com
Phone: 65.6305.7575

PANDUIT JAPAN
Tokyo, Japan
cs-japan@panduit.com
Phone: 81.3.6863.6000

PANDUIT LATIN AMERICA
Guadalajara, Mexico
cs-la@panduit.com
Phone: 52.33.3777.6000

PANDUIT AUSTRALIA PTY. LTD.
Victoria, Australia
cs-aus@panduit.com
Phone: 61.3.9794.9020

For a copy of Panduit product warranties, log on to www.panduit.com/warranty

For more information

Visit us at www.panduit.com

Contact Customer Service by email: cs@panduit.com
or by phone: 800.777.3300

PANDUIT®

©2014 Panduit Corp.
ALL RIGHTS RESERVED.
RKSP136--WW-ENG
11/2014