

THIS COPY IS PROVIDED ON A RESTRICTED BASIS AND IS NOT TO BE USED IN ANY WAY DETRIMENTAL TO THE INTERESTS OF PANDUIT CORP.

KNOCK-OUT FOR
PDU POWER CORD

INTEGRAL
CABINET TOP
CABLE ROUTING
SYSTEM

FRONT
PERFORATED
SINGLE HINGE
DOOR

REAR
PERFORATED
SPLIT
DOORS

SPLIT SIDE PANEL

SPLIT SIDE PANEL

1. VISIT OUR ON-LINE CATALOG AT WWW.PANDUIT.COM FOR A LIST OF CURRENT PARTS APPLICABLE FOR USE WITH THIS PRODUCT.
2. PRIMARY DIMENSIONS ARE IN MILLIMETERS.
3. RAIL ADJUSTMENT MEASUREMENTS ARE TAKEN FROM THE FRONT FACE OF EACH EQUIPMENT RAIL. INDEPENDENT ADJUSTABLE REAR EQUIPMENT MOUNTING RAILS (EIA) ADJUST FROM 141mm [5.5in] TO 437mm [17.2in] AND FROM 526mm [20.7in] TO 933mm [36.7in] WITH PDU BRACKETS AND CABLE MANAGEMENT FINGERS IN PLACE.
4. CAN BE USED WITH ANY 19" EIA STANDARD COMPONENT IN ADDITION TO ALL PANDUIT HORIZONTAL CABLE MANAGEMENT AND PATCH PANEL PRODUCTS.
5. EIA UNIVERSAL STANDARD HOLE PROGRESSION ON EQUIPMENT RAILS
15.88mm [.625in], 15.88mm [.625in],
12.70mm [.5in], 15.88mm [.625in],
15.88mm [.625in], 12.7mm [.5in]...ETC.
6. PARTS SUPPLIED:
-BASE CABINET
-FRONT PERFORATED SINGLE HINGE DOOR
(SEE CHART ON SHEET 2)
-REAR PERFORATED SPLIT DOOR
(SEE CHART ON SHEET 2)
-SPLIT SIDE PANELS (SEE CHART ON SHEET 2)
-EQUIPMENT RAILS FRONT & REAR (SEE
CHART ON SHEET 2)
-PDU BRACKETS (SEE CHART ON SHEET 2)
-CASTERS (SEE CHART ON SHEET 2)
-CABINET HARDWARE KIT
-INSTRUCTION SHEET
7. RACK UNIT SPACING NUMERALS ARE CLEARLY PRINTED ON EQUIPMENT MOUNTING RAILS.
8. FULLY BONDED STRUCTURE WHEN ASSEMBLED PER INSTRUCTIONS.
9. STATIC LOAD RATING. 1360 Kg (3000 LBS)
10. ROLLING LOAD RATING. 1133 Kg (2500 LBS)
11. SINGLE POINT GROUND LOCATIONS AT TOP AND BOTTOM OF CABINET.
12. ALL CABINET RAILS ARE INSTALLED NUMBERS UP.
13. MAXIMUM EQUIPMENT DEPTH, 959mm [37.75].

TITLE

NET-ACCESS S-TYPE CABINET W/INTEGRAL
CABINET TOP CABLE ROUTING SYSTEM 700mm
WIDE X 1070mm DEEP FAMILY
CUSTOMER DRAWING

ITEM REVISION NAME

12V352AZ/01.PRT

DATASET FILE NAME

12V352AZ_DC/01A.PRT

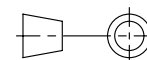
PANDUIT

MATERIAL:

N/A

DRAWING NUMBER:

12V352AZ-DC



THIRD ANGLE
PROJECTION

DRAWN BY

MDCA

DATE

4-11-13

CHK

SCALE

NONE

SHT 1 OF 5

SIZE

A

01A	12-12-14	MDCA	ADP	TCN	FLOOR MOUNT DIMENSIONS UPDATED	V09000BX	
00A	4-11-13	MDCA	RDSE	JDWE	RELEASED TO PRODUCTION	12V352AZ-DC	
REV	DATE	BY	CHK	APR	DESCRIPTION	ECN	

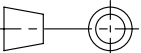
THIS COPY IS PROVIDED ON A RESTRICTED BASIS AND IS NOT TO BE USED IN ANY WAY DETRIMENTAL TO THE INTERESTS OF PANDUIT CORP.

PART NO.	DESCRIPTION	SINGLE HINGE FRONT DOOR	SPLIT REAR DOOR	SPLIT SIDE PANEL	FRONT CAGE NUT E-RAIL	REAR CAGE NUT FINGER MGMT E-RAIL	REAR CAGE NUT VERTICAL PATCH E-RAIL	STANDARD POU BRACKETS	CASTERS	CABLE MGMT FINGERS	VERTICAL PATCHING	CABINET WEIGHT FULLY UNPACKAGED	CABINET WEIGHT SHIPPING WEIGHT
S7212*T	NET-ACCESS S-TYPE CABINET 700mm X 42RU X 1070mm DEEP	01	01	02	02	02	00	02	04	00	00	138 Kg/EACH 306 LBS/EACH	159 Kg/EACH 351 LBS/EACH
S7512*T	NET-ACCESS S-TYPE CABINET 700mm X 45RU X 1070mm DEEP	01	01	02	02	02	00	02	04	00	00	145 Kg/EACH 321 LBS/EACH	166 Kg/EACH 366 LBS/EACH
S7812*T	NET-ACCESS S-TYPE CABINET 700mm X 48RU X 1070mm DEEP	01	01	02	02	02	00	02	04	00	00	152 Kg/EACH 336 LBS/EACH	172 Kg/EACH 381 LBS/EACH
S7219*T	NET-ACCESS S-TYPE CABINET 700mm X 42RU X 1070mm DEEP	01	01	00	02	02	00	02	04	00	00	105 Kg/EACH 233 LBS/EACH	126 Kg/EACH 278 LBS/EACH
S7519*T	NET-ACCESS S-TYPE CABINET 700mm X 45RU X 1070mm DEEP	01	01	00	02	02	00	02	04	00	00	112 Kg/EACH 248 LBS/EACH	132 Kg/EACH 293 LBS/EACH
S7819*T	NET-ACCESS S-TYPE CABINET 700mm X 48RU X 1070mm DEEP	01	01	00	02	02	00	02	04	00	00	119 Kg/EACH 263 LBS/EACH	139 Kg/EACH 308 LBS/EACH

* DENOTES COLOR

"B" = BLACK

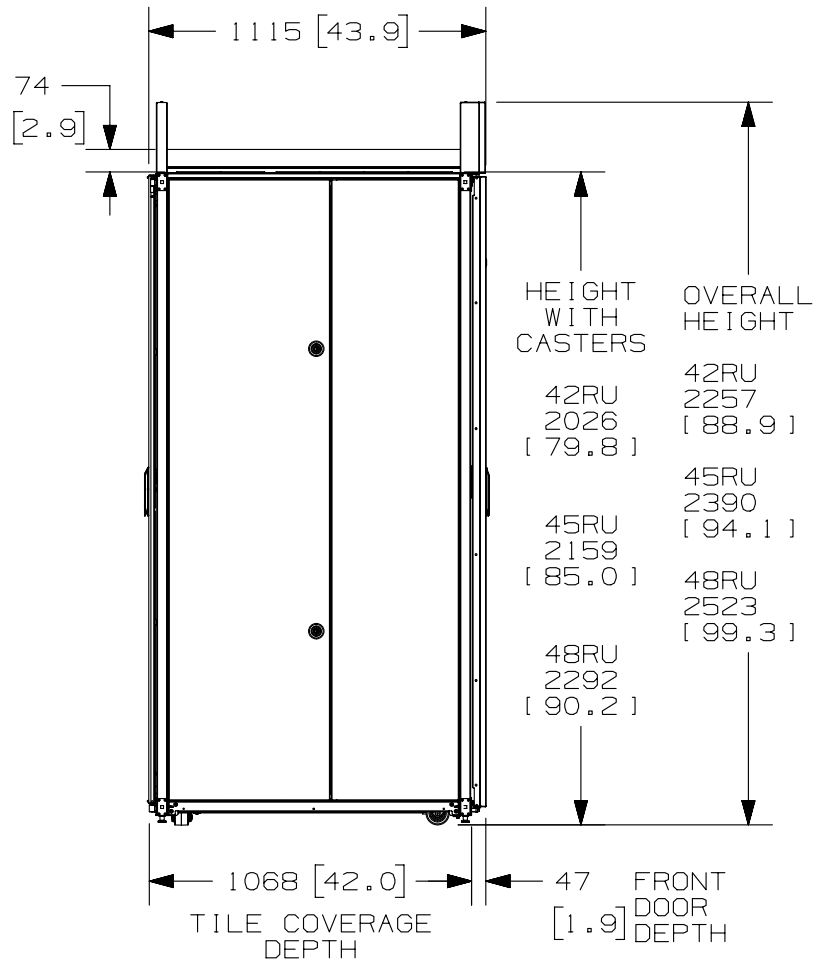
"W" = WHITE

							TITLE NET-ACCESS S-TYPE CABINET W/INTEGRAL CABINET TOP CABLE ROUTING SYSTEM 700mm WIDE X 1070mm DEEP FAMILY CUSTOMER DRAWING						
							ITEM REVISION NAME 12V352AZ/01.PRT				<div>PANDUIT</div>		
							DATASET FILE NAME 12V352AZ_DC/01A.PRT						
01A	12-12-14	MDCA	ADP	TCN	SEE SHEET 1 OF 5 FOR REVISIONS	V09000BX	<div></div> <div>THIRD ANGLE PROJECTION</div>				MATERIAL:	N/A	
00A	4-11-13	MDCA	RDSE	JDWE	SEE SHEET 1 OF 5 FOR REVISIONS	12V352AZ-DC					DRAWING NUMBER:	12V352AZ-DC	
REV	DATE	BY	CHK	APR	DESCRIPTION	ECN	DRAWN BY MDCA	DATE 4-11-13	CHK	SCALE NONE	SHT 2 OF 5	SIZE A	

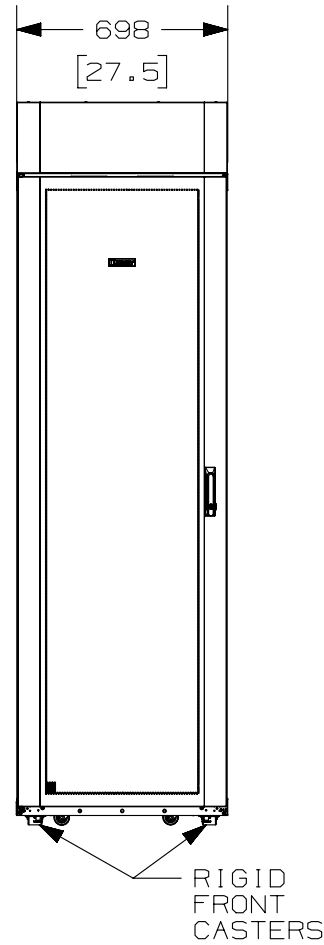
2

1

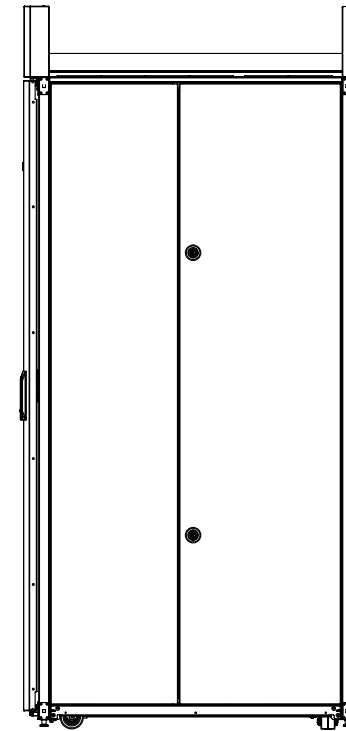
THIS COPY IS PROVIDED ON A RESTRICTED BASIS AND IS NOT TO BE USED IN ANY WAY DETRIMENTAL TO THE INTERESTS OF PANDUIT CORP.



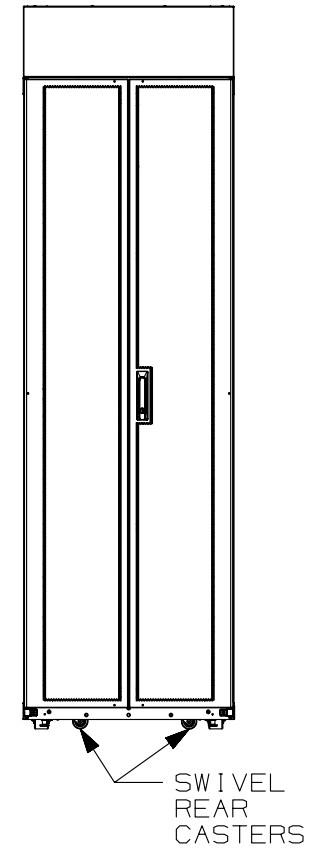
LEFT VIEW



FRONT VIEW



RIGHT VIEW



REAR VIEW

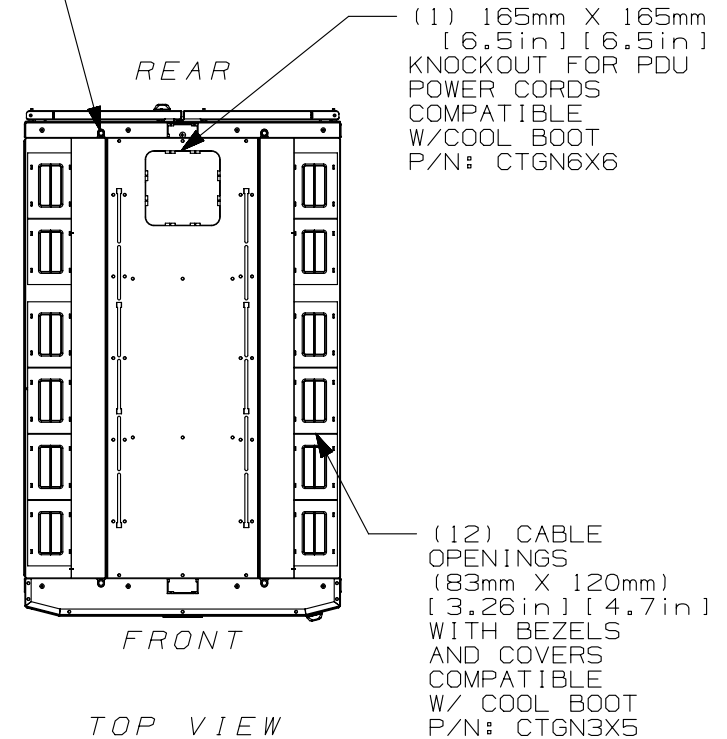
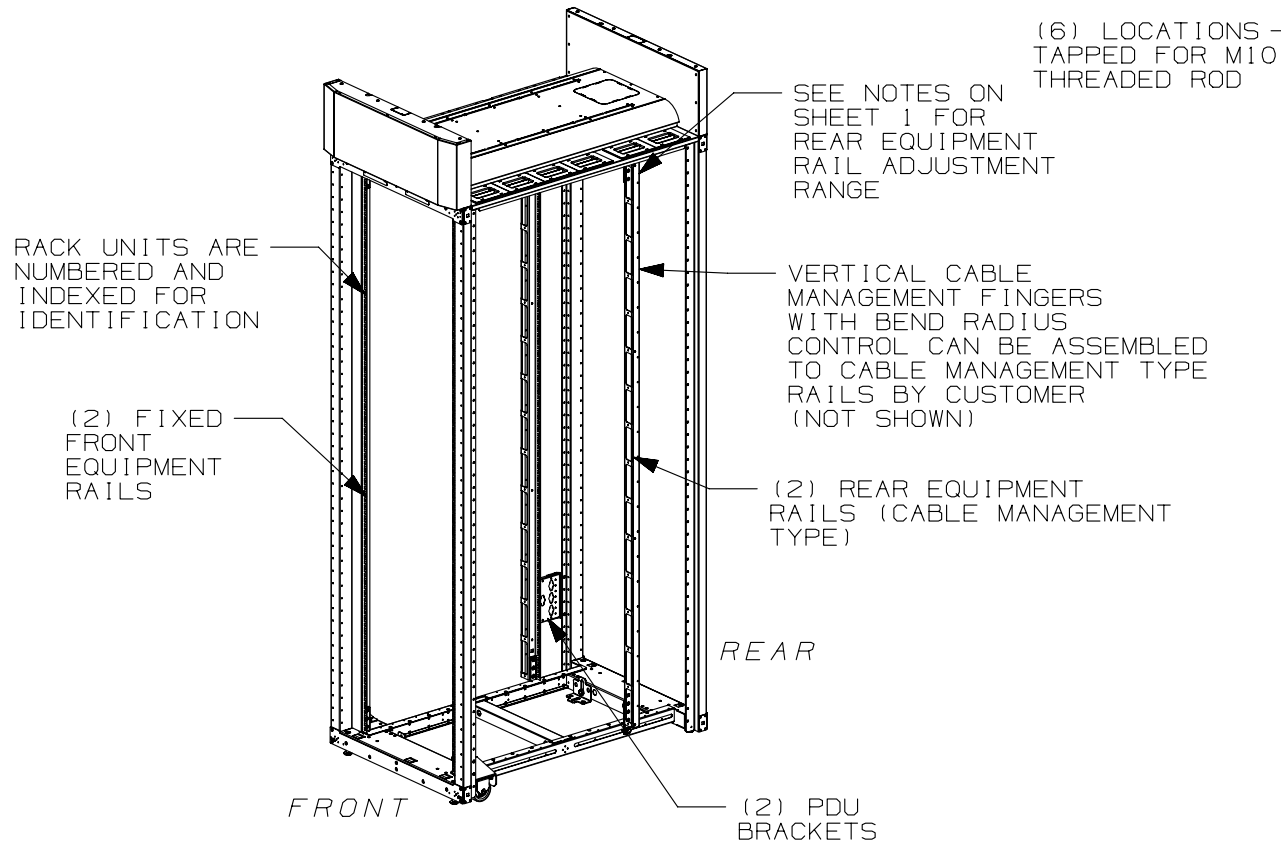
REV	DATE	BY	CHK	APR	DESCRIPTION	ECN
01A	12-12-14	MDCA	ADP	TCN	SEE SHEET 1 OF 5 FOR REVISIONS	V09000BX
00A	4-11-13	MDCA	RDSE	JDWE	SEE SHEET 1 OF 5 FOR REVISIONS	12V352AZ-DC

TITLE NET-ACCESS S-TYPE CABINET W/INTEGRAL CABINET TOP CABLE ROUTING SYSTEM 700mm WIDE X 1070mm DEEP FAMILY CUSTOMER DRAWING	
ITEM REVISION NAME 12V352AZ/01.PRT	PANDUIT
DATASET FILE NAME 12V352AZ_DC/01A.PRT	
MATERIAL: N/A	DRAWING NUMBER: 12V352AZ-DC
THIRD ANGLE PROJECTION	
DRAWN BY MDCA	DATE 4-11-13
CHK	SCALE NONE
SHT 3 OF 5	SIZE A

2

1

THIS COPY IS PROVIDED ON A RESTRICTED BASIS AND IS NOT TO BE USED IN ANY WAY DETRIMENTAL TO THE INTERESTS OF PANDUIT CORP.



FRONT DOOR, REAR DOOR,
AND SIDE PANELS NOT SHOWN

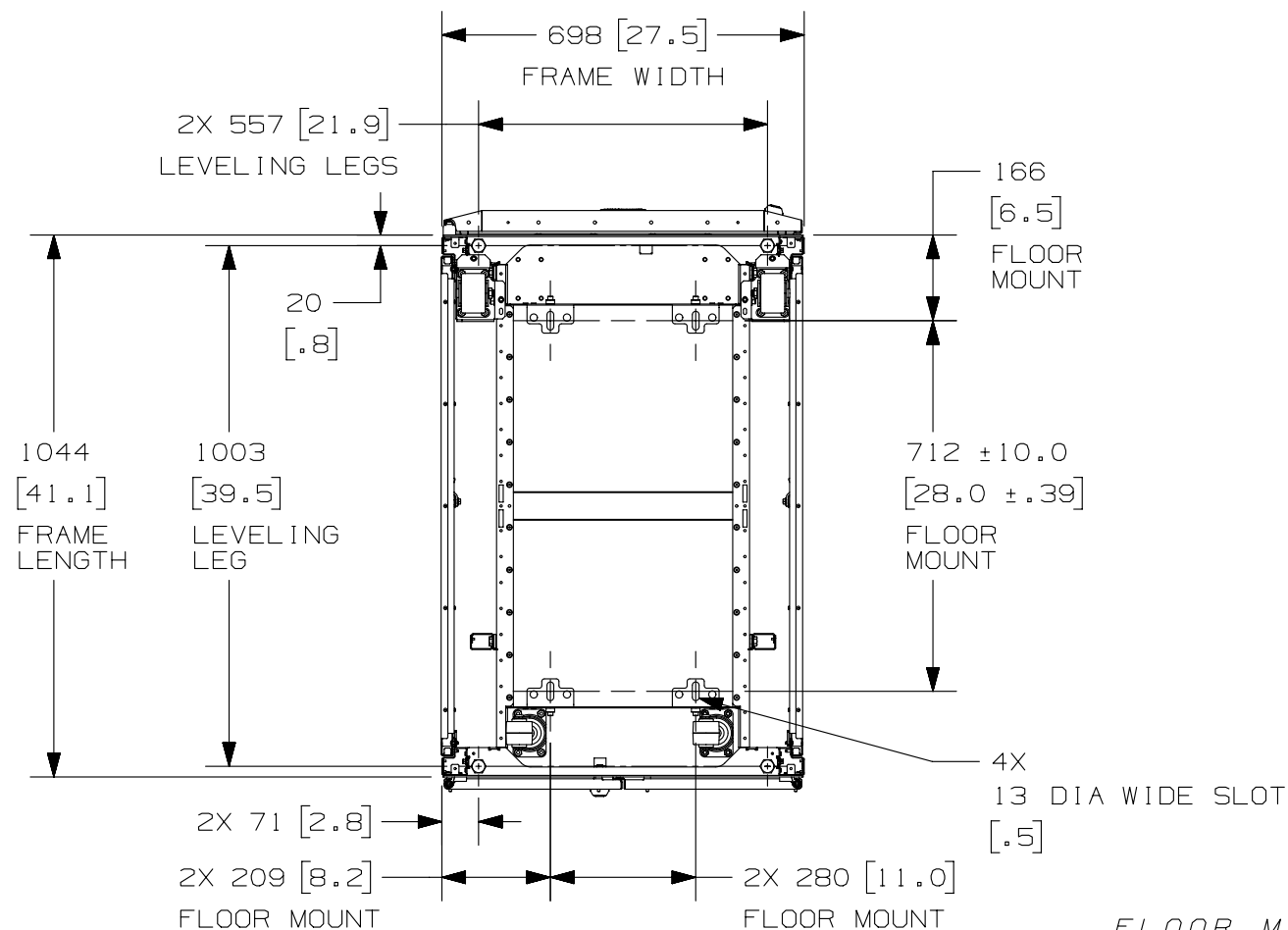
01A	12-12-14	MDCA	ADP	TCN	SEE SHEET 1 OF 5 FOR REVISIONS	V09000BX	
00A	4-11-13	MDCA	RDSE	JDWE	SEE SHEET 1 OF 5 FOR REVISIONS	12V352AZ-DC	
REV	DATE	BY	CHK	APR	DESCRIPTION	ECN	

TITLE NET-ACCESS S-TYPE CABINET W/INTEGRAL CABINET TOP CABLE ROUTING SYSTEM 700mm WIDE X 1070mm DEEP FAMILY CUSTOMER DRAWING	
ITEM REVISION NAME 12V352AZ/01.PRT	PANDUIT
DATASET FILE NAME 12V352AZ_DC/01A.PRT	
MATERIAL: N/A	DRAWING NUMBER: 12V352AZ-DC
THIRD ANGLE PROJECTION	
DRAWN BY MDCA	DATE 4-11-13
CHK	SCALE NONE
SHT 4 OF 5	SIZE A

2

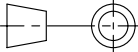
1

THIS COPY IS PROVIDED ON A RESTRICTED BASIS AND IS NOT TO BE USED IN ANY WAY DETRIMENTAL TO THE INTERESTS OF PANDUIT CORP.



REAR OF CABINET
BOTTOM VIEW

FLOOR MOUNTING HOLE LOCATIONS -
SOME PARTS REMOVED FOR CLARITY

TITLE												<div>PANDUIT</div>			
NET-ACCESS S-TYPE CABINET W/INTEGRAL CABINET TOP CABLE ROUTING SYSTEM 700mm WIDE X 1070mm DEEP FAMILY CUSTOMER DRAWING															
ITEM REVISION NAME															
12V352AZ/01.PRT															
DATASET FILE NAME														MATERIAL:	
12V352AZ_DC/01A.PRT															
<div></div> <div>THIRD ANGLE PROJECTION</div>														DRAWING NUMBER:	
DRAWN BY		DATE		CHK		SCALE		12V352AZ-DC				SIZE			
MDCA		4-11-13				NONE		SHT 5 OF 5				A			

2

1