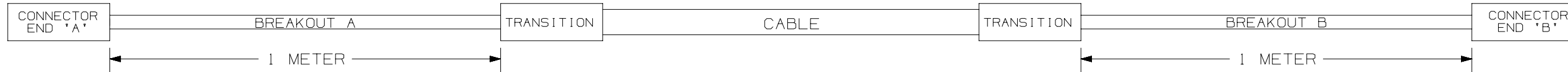


PLENUM CABLE		
FIBERS	CABLE TYPE	OUTER DIAMETER
8	SMALL DIA. INDOOR	0.177" (4.5mm)
16	SMALL DIA. INDOOR	0.212" (5.4mm)
24	SMALL DIA. INDOOR	0.232" (5.9mm)
48	SMALL DIA. INDOOR	0.232" (5.9mm)
72	SMALL DIA. INDOOR	0.260" (6.6mm)
96	SMALL DIA. INDOOR	0.319" (8.1mm)
144	SMALL DIA. INDOOR	0.378" (9.6 mm)

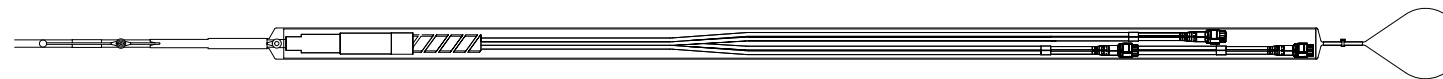
- NOTES:
- VISIT OUR ON-LINE CATALOG AT WWW.PANDUIT.COM FOR A LIST OF CURRENT PARTS APPLICABLE FOR USE WITH THIS PRODUCT.
 - ALL MATERIALS AND COMPONENTS USED MEET THE MATERIAL RESTRICTIONS OF RoHS (EUROPEAN DIRECTIVE 2011/65/EU ON THE RESTRICTION OF HAZARDOUS SUBSTANCES) AS PROPOSED BY THE RoHS TECHNICAL ADAPTATION COMMITTEE.
 - SINGLEMODE MPO AND SINGLEMODE PANMPO ARE ANGLED POLISH (APC)
 - CONFIGURATOR SHOWN ON PAGE 2.
 - POLARITY OPTIONS SHOWN ON PAGE 3.



CONNECTORS		
DESCRIPTION	PICTURE	USED ON
MPO-8 FEMALE*		END A OR END B
MPO-8 MALE*		END A OR END B
PanMPO-8 FEMALE*		END A OR END B
PanMPO-8 MALE*		END A OR END B
MPO-16 APC MALE (OFFSET KEY)		END A OR END B
MPO-16 APC FEMALE (OFFSET KEY)		END A OR END B
LC UNIBOOT PUSH PULL*		END B
DUPLEX LC*		END B

TRANSITIONS	
HD FLEX (8-24 FIBERS)	
STANDARD TUBE (ALL FIBER COUNTS)	VARIOUS STYLES

SEE "SERIAL" COLUMN IN TABLE LOCATED ON SHEET 2.



TYPICAL PULLING EYE

NOMINAL PULLING EYE DIAMETERS FOR PANMPO/MPO TRUNKS	
FIBERS	VALUE
8	0.75" (19mm)
16	0.75" (19mm)
24	1.5" (38mm)
48	1.5" (38mm)
72	1.5" (38mm)
96	1.5" (38mm)
144	1.875" (48mm)
PIGTAILS	1.1"

REV	DATE	BY	CHK	APR	DESCRIPTION	ECN
00A	07-21-23	SAT	BJBE	EJH	INITIAL RELEASE	01608AAL-DC

PART NUMBER		SEE CONFIGURATOR ON SHEET 2	
TITLE			
BASE-8 AND BASE-16 CONFIGURE TO ORDER PLENUM TRUNK CABLES BASE 8: 8 TO 144 FIBERS BASE 16: 16 FIBER CUSTOMER DRAWING			
ITEM REVISION NAME		01608AAL/00	
DATASET FILE NAME		01608AAL_DC/00A	
MATERIAL		MULTIPLE	
DRAWN BY		SAT	
DATE		07/28/23	
CHK		BJBE	
SCALE		NONE	
DRAWING NUMBER		01608AAL-DC	
SHEET 1 OF 3		B	

* = OFFERED IN ANGLED OR FLAT POLISH SINGLEMODE METHOD A AND METHOD B PANMPO ARE NOT POLARITY REVERSIBLE.



B-SIZE CUSTOMER



THIS COPY IS PROVIDED ON A RESTRICTED BASIS AND IS NOT TO BE USED IN ANY WAY DETRIMENTAL TO THE INTERESTS OF PANDUIT CORP.

CHARACTER	1	2	3	4	5	6	7	8	9-11	12	13-15
ATTRIBUTE	FIBER	PRODUCT/ CABLE TYPE	FIBER TYPE	FIBER COUNT	FLAME RATING	CONNECTOR TYPE (END 'A')	CONNECTOR TYPE (END 'B')	POLARITY/PERFORMANCE	SERIAL	UNITS	LENGTH (TIP TO TIP)
OPTIONS	F	Y= SMALL DIA INDOOR TRUNK	9= SM	8 = 8F	P= PLENUM (OFNP)	G = MPO-8 Female	G = MPO-8 Female	A = Polarity A - Std. 1L	XXX= SEE TABLE BELOW	F= FEET M= METERS	015 - 999 FEET 5 - 400 METERS
			Z= OM4	C = 16F		H = MPO-8 Male	H = MPO-8 Male	X = Polarity A - Opt. 1L			
			S= OM4+	U= 24F		J = PanMPO-8 Female	J = PanMPO-8 Female	K = Polarity A - Ultra 1L			
			W=OM5	W= 48F		K = PanMPO-8 Male	K = PanMPO-8 Male	B = Polarity B - Std. 1L			
				X= 72F		O = MPO-16 APC Female	O = MPO-16 APC Female	Y = Polarity B - Opt. 1L			
				Y= 96F		M = MPO-16 APC Male	M = MPO-16 APC Male	L = Polarity B - Ultra 1L			
				A= 144F		X = MPO-8 Female APC	P = LC Uniboat Push Pull	Q = 4 to 1 / U2 - Std. 1L			
						Y = MPO-8 Male APC	9 = LC Uniboat Push Pull APC	V = 4 to 1 / U2 - Opt. 1L			
						V = PanMPO-8 Female APC	L = Duplex LC	U = 4 to 1 / U2 - Ultra 1L			
						W = PanMPO-8 Male APC	B = Duplex LC APC	1 = 4 to 1 Flipped Pair / U1 - Std. 1L			
							X = MPO-8 Female APC	2 = 4 to 1 Flipped Pair / U1 - Opt. 1L			
							Y = MPO-8 Male APC	3 = 4 to 1 Flipped Pair / U1 - Ultra 1L			
							V = PanMPO-8 Female APC	4 = 8 to 1 / U2 - Std. 1L			
							W = PanMPO-8 Male APC	5 = 8 to 1 / U2 - Opt. 1L			
								6 = 8 to 1 / U2 - Ultra 1L			
								7 = 8 to 1 Flipped Pair / U1 - Std. 1L			
				8 = 8 to 1 Flipped Pair / U1 - Opt. 1L							
				9 = 8 to 1 Flipped Pair / U1 - Ultra 1L							

"SERIAL" COLUMN FROM ABOVE

BASE 8 SERIAL #	BASE 16 SERIAL #	TRANSITION TYPE	BREAKOUT A LENGTH	BREAKOUT B LENGTH	PULLING EYE	DESCRIPTION
011	021	HD FLEX	1 METER	1 METER	END A ONLY	HD FLEX WITH PULLING EYE
012	022				NONE	HD FLEX WITHOUT PULLING EYE
013	023			NONE	END B ONLY	HD FLEX PIGTAIL WITH PULLING EYE
014	024			NONE	NONE	HD FLEX PIGTAIL WITH NO PULLING EYE
015	025	STANDARD	1 METER	1 METER	END A ONLY	STANDARD WITH PULLING EYE
016	026				NONE	STANDARD WITHOUT PULLING EYE
017	027			NONE	END B ONLY	STANDARD PIGTAIL WITH PULLING EYE
018	028			NONE	NONE	STANDARD PIGTAIL WITH NO PULLING EYE

PART NUMBER
SEE CONFIGURATOR ABOVE

TITLE
**BASE-8 AND BASE-16 CONFIGURE TO ORDER
PLENUM TRUNK CABLES
BASE 8: 8 TO 144 FIBERS
BASE 16: 16 FIBER
CUSTOMER DRAWING**

ITEM REVISION NAME
01608AAL/00

DATASET FILE NAME
01608AAL_DC/00A

THIRD ANGLE PROJECTION

MATERIAL
MULTIPLE

DRAWING NUMBER
01608AAL - DC

DRAWN BY: SAT DATE: 07/28/23 CHK: BJBE SCALE: NONE SHEET 2 OF 3 SIZE: B

REV	DATE	BY	CHK	APR	DESCRIPTION	ECN
					SEE REVISIONS ON SHEET 1	0160AAL-DC



B

B

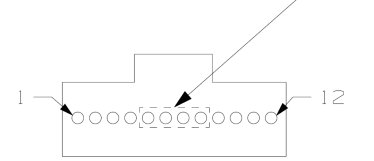
A

A

B-SIZE CUSTOMER

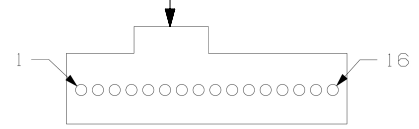
BASE 8 AND BASE 16 POLARITY OPTIONS

8 FIBER CONFIGURATION
MIDDLE 4 FERRULE HOLES
NOT FILLED WITH LIVE
FIBERS



8F MPO CONNECTOR
END VIEW WITH
FERRULE POSITION

OFFSET KEY



16F MPO CONNECTOR
END VIEW WITH
FERRULE POSITION

BASE-8 MPO (END A) TO MPO (END B) TRUNKS

FIBER COLOR	METHOD A		METHOD B	
	MPO FERRULE POSITION (END A)	MPO FERRULE POSITION (END B)	MPO FERRULE POSITION (END A)	MPO FERRULE POSITION (END B)
BLUE	1	1	1	12
ORANGE	2	2	2	11
GREEN	3	3	3	10
BROWN	4	4	4	9
SLATE	9	9	9	4
WHITE	10	10	10	3
RED	11	11	11	2
BLACK	12	12	12	1

BASE-16 MPO (END A) TO LC (END B) TRUNKS

PLENUM (RFBP*16)	8 to 1 (U2)		8 to 1 PAIR FLIPPED (U1)	
	MPO FERRULE POSITION (END A)	LC FIBER POSITION (END B)	MPO FERRULE POSITION (END A)	LC FIBER POSITION (END B)
BLUE	1	1-B	1	1-A
ORANGE	2	2-B	2	2-A
GREEN	3	3-B	3	3-A
BROWN	4	4-B	4	4-A
SLATE	5	5-B	5	5-A
WHITE	6	6-B	6	6-A
RED	7	7-B	7	7-A
BLACK	8	8-B	8	8-A
BLUE-2	9	8-A	9	8-B
ORANGE-2	10	7-A	10	7-B
GREEN-2	11	6-A	11	6-B
BROWN-2	12	5-A	12	5-B
SLATE-2	13	4-A	13	4-B
WHITE-2	14	3-A	14	3-B
RED-2	15	2-A	15	2-B
BLACK-2	16	1-A	16	1-B

BASE-8 MPO (END A) TO LC (END B) TRUNKS

FIBER COLOR	4 to 1 (U2)		4 to 1 PAIR FLIPPED (U1)	
	MPO FERRULE POSITION (END A)	LC FIBER POSITION (END B)	MPO FERRULE POSITION (END A)	LC FIBER POSITION (END B)
BLUE	1	1-B	1	1-A
ORANGE	2	2-B	2	2-A
GREEN	3	3-B	3	3-A
BROWN	4	4-B	4	4-A
SLATE	9	4-A	9	4-B
WHITE	10	3-A	10	3-B
RED	11	2-A	11	2-B
BLACK	12	1-A	12	1-B

BASE-16 MPO (END A) TO MPO (END B) TRUNKS

FIBER COLOR	END A	END B		END B	
	ALL ASSEMBLIES	METHOD A	METHOD B	METHOD B	
	1-16 FIBER MPO FERRULE POSITION	1-16 FIBER MPO	1-16 FIBER MPO	1-8 FIBER MPO (1)	1-8 FIBER MPO (2)
BLUE	1	1	16	12	N/A
ORANGE	2	2	15	11	
GREEN	3	3	14	10	
BROWN	4	4	13	9	
SLATE	5	5	12	N/A	12
WHITE	6	6	11		11
RED	7	7	10		10
BLACK	8	8	9	9	N/A
BLUE-2	9	9	8	4	
ORANGE-2	10	10	7	3	
GREEN-2	11	11	6	2	
BROWN-2	12	12	5	1	
SLATE-2	13	13	4	4	N/A
WHITE-2	14	14	3	3	
RED-2	15	15	2	2	
BLACK-2	16	16	1	1	

BASE-16 PIGTAILS

MPO (END A) TO UNTERMINATED (END B)

FIBER POLARITY BASE-16 METHOD A PIGTAIL

FIBER 1: BLUE
FIBER 2: ORANGE
FIBER 3: GREEN
FIBER 4: BROWN
FIBER 5: SLATE
FIBER 6: WHITE
FIBER 7: RED
FIBER 8: BLACK
FIBER 9: BLUE-2
FIBER 10: ORANGE-2
FIBER 11: GREEN-2
FIBER 12: BROWN-2
FIBER 13: SLATE-2
FIBER 14: WHITE-2
FIBER 15: RED-2
FIBER 16: BLACK-2

FIBER POLARITY BASE-16 METHOD B PIGTAIL

FIBER 1: BLACK-2
FIBER 2: RED-2
FIBER 3: WHITE-2
FIBER 4: SLATE-2
FIBER 5: BROWN-2
FIBER 6: GREEN-2
FIBER 7: ORANGE-2
FIBER 8: BLUE-2
FIBER 9: BLACK
FIBER 10: RED
FIBER 11: WHITE
FIBER 12: SLATE
FIBER 13: BROWN
FIBER 14: GREEN
FIBER 15: ORANGE
FIBER 16: BLUE

BASE-8 PIGTAILS

MPO (END A) TO UNTERMINATED (END B)

FIBER POLARITY BASE-16 METHOD A PIGTAIL

FIBER 1 - BLUE
FIBER 2 - ORANGE
FIBER 3 - GREEN
FIBER 4 - BROWN
FIBER 5 - SLATE
FIBER 6 - WHITE
FIBER 7 - RED
FIBER 8 - BLACK
FIBER 9 - YELLOW
FIBER 10 - VIOLET
FIBER 11 - ROSE
FIBER 12 - AQUA

FIBER POLARITY BASE-8 METHOD B PIGTAIL

FIBER 1 - AQUA
FIBER 2 - ROSE
FIBER 3 - VIOLET
FIBER 4 - YELLOW
FIBER 5 - BLACK
FIBER 6 - RED
FIBER 7 - WHITE
FIBER 8 - SLATE
FIBER 9 - BROWN
FIBER 10 - GREEN
FIBER 11 - ORANGE
FIBER 12 - BLUE

REV	DATE	BY	CHK	APR	DESCRIPTION	ECN
					SEE REVISIONS ON SHEET 1	01608AAL-DC

PART NUMBER		SEE CONFIGURATOR ON SHEET 2	
TITLE			
BASE-8 AND BASE-16 CONFIGURE TO ORDER PLENUM TRUNK CABLES BASE 8: 8 TO 144 FIBERS BASE 16: 16 FIBER CUSTOMER DRAWING			
ITEM REVISION NAME		01608AAL/00	
DATASET FILE NAME		01608AAL_DC/00A	
MATERIAL		MULTIPLE	
DRAWN BY		SAT	
DATE		07/28/23	
CHK		BJBE	
SCALE		NONE	
DRAWING NUMBER		01608AAL-DC	
SHEET 3 OF 3		B	