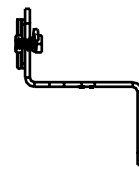
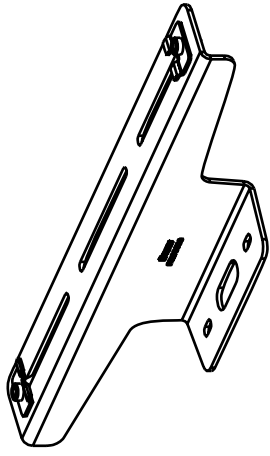
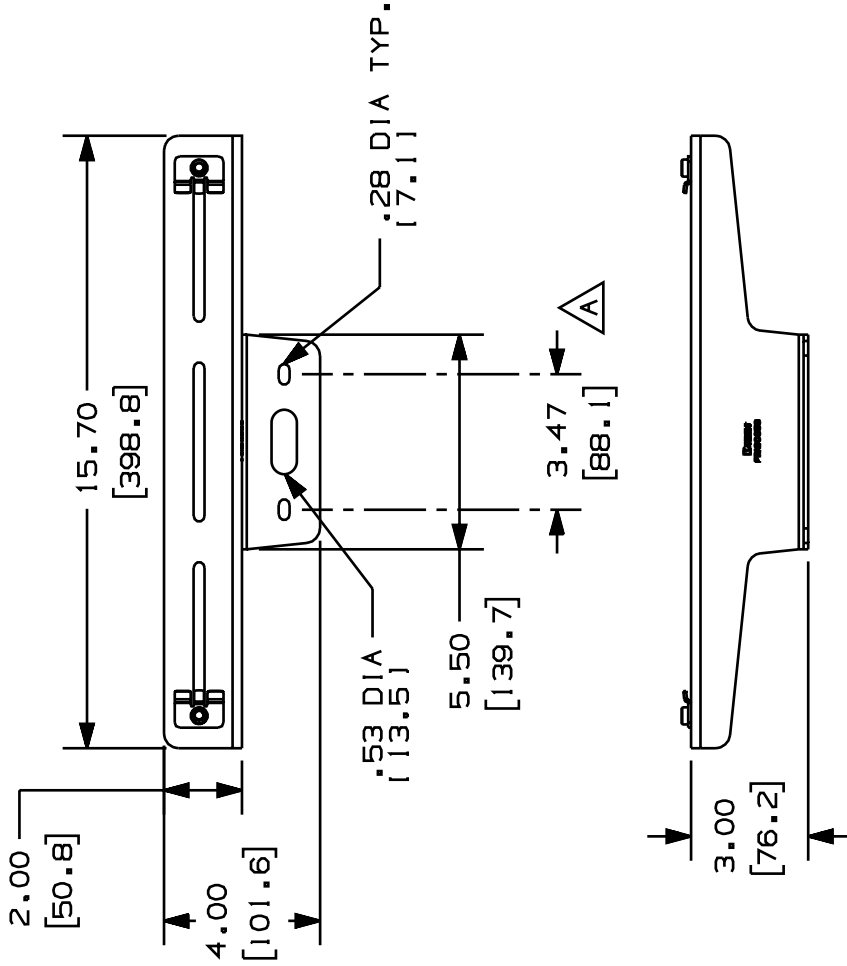


THIS COPY IS PROVIDED ON A RESTRICTED BASIS AND IS NOT TO BE USED IN ANY WAY DETRIMENTAL TO THE INTERESTS OF PANDUIT CORP.

PANDUIT P/N	WEIGHT
FR12CS12	3.10LB/PC.
FR12CS12M	(1400g/PC.)

NOTES:

- SEE CURRENT CATALOG FOR ADDITIONAL PART SUFFIXES TO INDICATE PACKAGE QUANTITY.
- BRACKET ATTACHES TO 1/2" OR 12mm THREADED ROD (NOT INCLUDED).
- THE FR12CS12 AND FR12CS12M KITS INCLUDE:
 - ONE (1) BRACKET.
 - ONE (1) T-FASTENER.
 - ONE (1) 1/4-20 "KEPS" LOCK NUT.
 - TWO (2) BRACKET CLIP ASSEMBLIES.
 - TWO (2) 1/4-20 HEX HEAD MACHINE SCREWS.
 - TWO (2) 1/4 HELICAL SPRING LOCKWASHERS.
 - TWO (2) 1/2-13 HEX NUTS (FR12CS12 ONLY).
 - TWO (2) 1/2 HELICAL SPRING LOCKWASHERS.
 - TWO (2) M12X1.75 HEX NUTS (FR12CS12M ONLY).
- FINISH COLOR: BLACK (EXCEPT FOR HARDWARE)
- DIMENSIONS IN PARENTHESIS ARE IN METRIC.



ENG. REF.: D37797BF_DC_FR12CS_00B.prt

CAD FILENAME/LAYERS 37797-57.PDF

PANDUIT

CORP. TINLEY PARK, ILLINOIS

FIBERRUNNER™ 12x4 CENTER SUPPORT FOR
THREADED ROD BRACKET KIT (FR12CS12, FR12CS12M)
CUSTOMER DRAWING

UNLESS OTHERWISE SPECIFIED,
DIMENSIONAL TOLERANCES ARE:
(.X) ±.XXX
(.XX) ±.03(.8) ANGLES :

UNLESS OTHERWISE SPECIFIED,
ALL DIMENSIONS ARE GIVEN
IN INCHES, THIRD ANGLE PROJECTION.

DRAWN BY JHNU MAT'L: NONE

SCALE NONE

DATE 5-30-01

STEEL

DRAWING NO. 37797-57

SIZE A

CHECKED BY CFM

CUST SUP

CHK HIW

ECN 37797-57

DATE 5-30-01

BY CFM

CHK HIW

DESCRIPTION

ADDED DIMENSION.

RELEASED TO PRODUCTION.