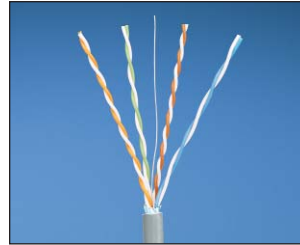


TX5500™ Category 5e Shielded Copper Cable – F/UTP

specifications

Category 5e cable shall exceed ANSI/TIA-568-C.2 and IEC 61156-5 Category 5e component standards. The conductors shall be 24 AWG copper insulated with HDPE. The copper conductors shall be twisted in pairs and covered with a metallic foil shield and a flame-retardant LSZH or CM jacket.



technical information

Electrical performance:	Certified channel performance in a 4-connector configuration up to 100 meters and exceeds the requirements of ISO 11801 Class D and ANSI/TIA-568-C.2 Category 5e standards at swept frequencies up to 100 MHz Certified component performance up to 100 meters and exceeds the component requirement of the IEC 61156-5 and ANSI/TIA-568-C.2 Category 5e component standards at swept frequencies up to 100 MHz
Conductors/insulators:	24 AWG solid copper insulated with HDPE
Flame rating:	LSZH – IEC 60754-2, IEC 61034, IEC 60332-1 CM – UL 1685
PoE compliance:	Meets IEEE 802.3af and IEEE 802.3at for PoE applications
Installation tension:	110 N (25 lbf) maximum
Temperature rating:	0°C to 50°C (32°F to 122°F) during installation -20°C to 75°C (-4°F to 167°F) during operation
Cable jacket:	LSZH – Low Smoke Zero Halogen CM – PVC
Cable diameter:	6.1mm (0.241 in.) nominal
Cable weight:	LSZH – 11 kg/305m (25 lbs./1000 ft.) CM – 11 kg/305m (24 lbs./1000 ft.)
Packaging:	CM packaged 305m (1000 ft.) in a carton LSZH packaged 305m (1000 ft.) on a reel Package tested to ISTA Procedure 1A

key features and benefits

Third party tested	Cable has been tested as part of the TX5500™ Category 5e F/UTP Copper Cabling System by an independent laboratory and complies with the electrical channel requirements of ANSI/TIA-568-C.2 Category 5e standard and ISO 11801 Class D standard
Descending length cable markings	Easy identification of remaining cable reduces installation time and cable scrap
Internal drain wire	Drain wire facilitates grounding of the cable, providing efficient performance and protection of the network investment
Overall metallic foil shield	Overall foil shield provides superior structural integrity and reduces low frequency external interference to ensure exceptional cable performance
Easy payout or carton	Ensures proper performance and provides quick installation; LSZH supplied 305m (1000 ft.) on a reel; CM supplied 305m (1000 ft.) in a carton

applications

TX5500™ F/UTP Copper Cable is a component of the Panduit™ TX5500™ F/UTP Copper Cabling System. This end-to-end system provides Gigabit Ethernet performance with usable bandwidth beyond 100 MHz. With certified performance to the ANSI/TIA-568-C.2 Category 5e and ISO 11801 Class D standards, this system will support the following applications:

- Ethernet 10BASE-T, 100BASE-T (Fast Ethernet), 1000BASE-T (Gigabit Ethernet)
- 155 Mb/s ATM, 622 Mb/s ATM
- Token ring 4/16

TX5500™ Category 5e F/UTP Copper Cabling System

TX5500™ Category 5e F/UTP Shielded Copper Cable

LSZH:	PFL5504*-G
CM:	PFC5504*-G

Mini-Com™ TX5e™ Shielded Jack Module

Jack module:	CJS5E88TGYY**
---------------------	---------------

TX5e™ Shielded CM/LSZH Patch Cord

Meter lengths:	STPCH^MBBL
-----------------------	------------

Mini-Com™ All Metal Modular Angled Patch Panels

24-port, 1 RU:	CPA24BLY
48-port, 2 RU:	CPA48BLY
72-port, 2 RU:	CPA72BLY

Mini-Com™ All Metal Modular Flat Patch Panels

24-port, 1 RU:	CP24BLY
48-port, 2 RU:	CP48BLY
72-port, 2 RU:	CP72BLY

Cable Prep Tools

Wire snipping tool:	CWST
Wire stripping tool:	CJAST

*To designate color, add suffix to part number. PFL5504 is available in WH (White) or IG (International Gray); PFC5504 is available in BU (Blue) or WH (White). For additional cable colors, contact customer service.

**Add -24 to end of part number for 24-pack convenience package.

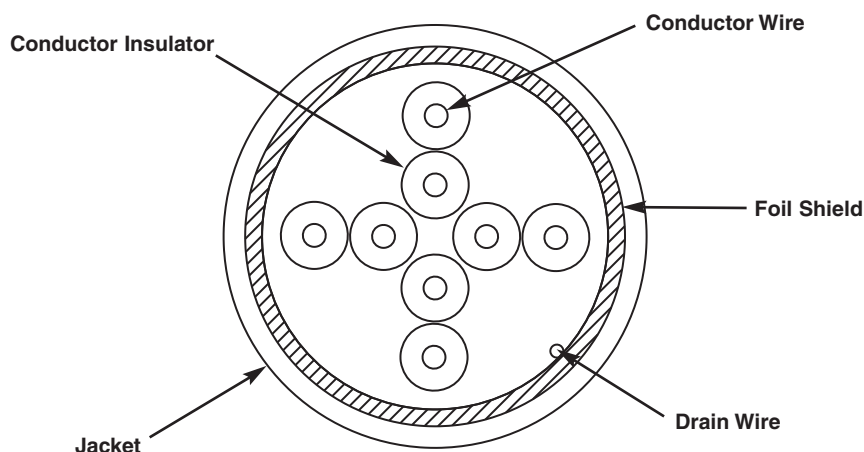
^For standard meter lengths 1-10 meters (increments of one meter) and 0.5, 1.5, 2.5, 15, 20 meters, change the length designation in the part number to the desired length. For boot colors others than BL (Black), replace suffix BL with BU (Blue), RD (Red), YL (Yellow), GR (Green), OR (Orange), or VL (Violet). For example, the part number for 15-meter patch cord with blue boots is STPCH15MBBU.

TX5500™ Category 5e Shielded Copper Cable – F/UTP

additional specifications

Mechanical Test	
<i>Ultimate Breaking Strength</i>	>400 N (90 lbf)
<i>Minimum Bend Radius</i>	8 x cable diameter
Electrical Test	
<i>Nominal Velocity of Propagation (NVP)</i>	67%

cable construction



WORLDWIDE SUBSIDIARIES AND SALES OFFICES

PANDUIT CANADA
Markham, Ontario
cs-cdn@panduit.com
Phone: 800.777.3300

PANDUIT EUROPE LTD.
London, UK
cs-emea@panduit.com
Phone: 44.20.8601.7200

PANDUIT SINGAPORE PTE. LTD.
Republic of Singapore
cs-ap@panduit.com
Phone: 65.6305.7575

PANDUIT JAPAN
Tokyo, Japan
cs-japan@panduit.com
Phone: 81.3.6863.6000

PANDUIT LATIN AMERICA
Guadalajara, Mexico
cs-la@panduit.com
Phone: 52.33.3777.6000

PANDUIT AUSTRALIA PTY. LTD.
Victoria, Australia
cs-aus@panduit.com
Phone: 61.3.9794.9020

For a copy of Panduit product warranties, log on to www.panduit.com/warranty

For more information

Visit us at www.panduit.com

Contact Customer Service by email: cs@panduit.com
or by phone: 800.777.3300 and reference COSP206

PANDUIT®

©2011 Panduit Corp.
ALL RIGHTS RESERVED.

WW-COSP206

7/2011