



Base-16 Fiber Cabling Systems

Base-16 Fiber Cabling Systems



Why it Makes Sense for You

The Base-16 Fiber Cabling System allows you to future proof your Data Center up to a blazing 1.6 terabits per second. This groundbreaking product delivers high performance, reliability, and scalability for large enterprise and hyperscale deployments. Base-16 fiber offers high bandwidth and breakout lane capabilities and is used for applications with multiple fibers/channels for both Transmit and Receive. Base-16 has been proven to reduce electrical costs when used in breakout mode.

A promotional graphic for the Panduit Base-16 Fiber Cabling System. On the left, a light blue fiber cable is shown with a loop at the top and two connectors at the bottom. The connectors are black with green accents. To the right, the text reads: 'FUTURE PROOF YOUR DATA CENTER' in white on a dark blue background, followed by 'PANDUIT™ BASE-16 FIBER CABLING SYSTEM' in black. Below this, there is a blue shield icon with a white checkmark, and the text 'Watch & Download Base-16 Fiber Cabling Systems' in blue and black.

HD Flex 12-Port Fiber Enclosures, Panels

Part Number	Description	Cassette/FAP Openings
Enclosures		
FLEX1U12	1 RU HD Flex 12-Port Enclosure	6
FLEX2U12	2 RU HD Flex 12-Port Enclosure	12
FLEX4U12	4 RU HD Flex 12-Port Enclosure	24
Panels		
FLEX1UPN12	1 RU HD Flex 12-Port Panel	6
FLEX2UPN12	2 RU HD Flex 12-Port Panel	12
FLEX4UPN12	4 RU HD Flex 12-Port Panel	24



FLEX1U12



FLEX4U12



FLEX2UPN12

HD Flex 12-Port Base-16 (8-to-1 Conversion Cassettes)

Part Number	Fiber Type	Fiber Count	Port Count	Number of Rear MPO's	Number of Front Duplex LC's	Performance
FHC3ZO-16M-10*	OM4	16	8	1x16f	8	Optimized
FHC3SO-16M-10*	OM4+					
FHC3WO-16M-10*	OM5					
FHC39N-16M-10*	OS2					Standard



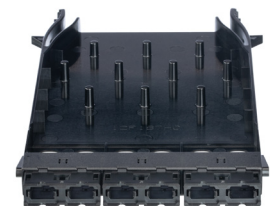
FHC3ZO-16M-10U

* = U for Universal Pair Flipped, U2 for Universal For Correct Polarity Reference Application Guide Requires Method B MPO Connectivity

HD Flex 6 Port Base-16 Fiber Adapter Panels

Part Number	Description	Adapter
FHMP-6M-ABL	HD Flex MPO-16 FAP; 6-port, Type A Adapter (Key-up to Key-down) Black	6
FHSBBL06W	HD Flex Blanking Panel 6 port	N/A

Other polarity options available on Panduit.com



FHMP-6M-ABL

HD Flex 4 Port Base-16 Fiber Adapter Panels

Part Number	Description	Adapter
FHMP-4M-ABL	HD Flex MPO-16 FAP; 4-port, Type A Adapter (Key-up to Key-down) Black	4
FHSBBL04W	HD Flex Blanking Panel 6 port	N/A

Other polarity options available on Panduit.com



FHMP-4M-ABL

Opticom Enclosures, Panels

Part Number	Description	Cassette/FAP Openings
-------------	-------------	-----------------------

Rack Mount Enclosures

FRME1U	Rack Mount Fiber Enclosure 1 RU	3
FRME2U	Rack Mount Fiber Enclosure 2 RU	6
FRME4	Rack Mount Fiber Enclosure 4 RU	12

Rack Mount Cassette Enclosures

FCE1U	Rack Mount Fiber Cassette Enclosure 1 RU	4
FCE2U	Rack Mount Fiber Cassette Enclosure 2 RU	8
FCE4U	Rack Mount Fiber Cassette Enclosure 4 RU	12

Panels

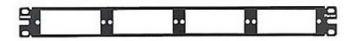
CFAPPBL1	Fiber Adapter Patch Panel 1 RU	4
CFAPPBL2	Fiber Adapter Patch Panel 2 RU	8



FRME1U



FCE1U



CFAPPBL1

Opticom Base-16 (8-to-1 Conversion Cassettes)

Part Number	Fiber Type	Fiber Count	Port Count	Number of Rear MPO's	Number of Front Duplex LC's	Performance
FC3ZO-16M-10*	OM4	16	8	1x16f	8	Optimized
FC3SO-16M-10*	OM4+					
FC3WO-16M-10*	OM5					
FC39N-16M-10*	OS2					Standard

* = U for Universal Pair Flipped, U2 for Universal For Correct Polarity Reference [Application Guide](#) Requires Method B MPO Connectivity



FC3ZO-16M-10U2

Opticom Base-16 Fiber Adapter Panels

Part Number	Description	Adapter
FAPH08MBLMPO	Opticom 8-port MPO-16 FAP/Coupler, Key-Up to Key-Down (Method A)	8
FAPH12MBLMPO	Opticom 12-port MPO-16 FAP/Coupler, Key-Up to Key-Down (Method A)	12
FAPB	Opticom Blanking Panel	N/A



FAPH08MBLMPO

Note: Visit www.panduit.com for other Opticom products and accessories.

Trunks

HD Flex Indoor Small Diameter MPO-16 Trunks

Part Number	Fiber Type	Fiber Count	Connector Type End A	Connector Type End B	Breakout lengths	Flame Rating	Performance	Polarity	Pulling Eye	Length Ft. (m)
FY9CPOOB021F015	OS2	16	MPO-16 Female APC	MPO-16 Female APC	1 Meter	Plenum	Standard	Method B	Pulling Eye on End A	15.0 (4.57)
FYZCPOOY021F015	OM4						Optimized			
FYWCPOOY021F015	OM5						Optimized			
FYSCPOOY021F015	OM4+						Optimized			



FYSCPOOY021F015

HD Flex Indoor Small Diameter MPO-16 to PanMPO Trunks

Part Number	Fiber Type	Fiber Count	Connector Type End A	Connector Type End B	Breakout lengths	Flame Rating	Performance	Polarity	Pulling Eye	Length Ft. (m)
FY9CPOVB021F015	OS2	16	MPO-16 Female APC	PanMPO-8 Female APC	1 Meter	Plenum	Standard	Method B	Pulling Eye on End A	15.0 (4.57)
FYZCPOJY021F015	OM4			PanMPO-8 Female			Optimized			
FYWCPOJY021F015	OM5						Optimized			
FYSCPOJY021F015	OM4+						Optimized			



FY9CPOVB021F015

Indoor Small Diameter MPO-16 Trunks

Part Number	Fiber Type	Fiber Count	Connector Type End A	Connector Type End B	Breakout lengths	Flame Rating	Performance	Polarity	Pulling Eye	Length Ft. (m)
FY9CPOOB025F015	OS2	16	MPO-16 Female APC	MPO-16 Female APC	1 Meter	Plenum	Standard	Method B	Pulling Eye on End A	15.0 (4.57)
FYZCPOOY025F015	OM4						Optimized			
FYWCPOOY025F015	OM5						Optimized			
FYSCPOOY025F015	OM4+						Optimized			



FY9CPOOB025F015

Indoor Small Diameter MPO-16 to PanMPO Trunks

Part Number	Fiber Type	Fiber Count	Connector Type End A	Connector Type End B	Breakout lengths	Flame Rating	Performance	Polarity	Pulling Eye	Length Ft. (m)
FY9CPOVB025F015	OS2	16	MPO-16 Female APC	PanMPO-8 Female APC	1 Meter	Plenum	Standard	Method B	Pulling Eye on End A	15.0 (4.57)
FYZCPOJY025F015	OM4			PanMPO-8 Female			Optimized			
FYWCPOJY025F015	OM5						Optimized			
FYSCPOJY025F015	OM4+						Optimized			



FYZCPOJY025F015

Indoor Small Diameter MPO-16 to Duplex LC

Part Number	Fiber Type	Fiber Count	Connector Type End A	Connector Type End B	Breakout lengths	Flame Rating	Performance	Polarity	Pulling Eye	Length Ft. (m)
FY9CPOL4025F015	OS2	16	MPO-16 Female APC	LC Duplex	1 Meter	Plenum	Standard	8 to 1 / U2	Pulling Eye on End A	15.0 (4.57)
FY9CPOB4025F015				LC/APC Duplex						
FYZCPOL5025F015	OM4			LC Duplex			Optimized			
FYWCPOL5025F015	OM5									
FYSCPOL5025F015	OM4+									



FY9CPOL4025F015

Interconnects and Harnesses

Indoor MPO-16 Interconnects

Part Number	Fiber Type	Fiber Count	Connector Type End A	Connector Type End B	Flame Rating	Performance	Polarity	Length Ft. (m)
FR9CPOOB021F003	OS2	16	MPO-16 Female APC		Plenum	Standard	Method B	3 (0.91)
FRZCPOOY021F003	OM4					Optimized		
FRWCPOOY021F003	OM5							
FRSCPOOY021F003	OM4+							



FRZCPOOY021F003

Indoor MPO-16 to 2xPanMPO-8 Interconnects

Part Number	Fiber Type	Fiber Count	Connector Type End A	Connector Type End B	Flame Rating	Performance	Polarity	Length Ft. (m)
FR9CPOVB023F005	OS2	16	MPO-16 Female APC	PanMPO-8 Female APC	Plenum	Standard	Method B	5 (1.524)
FRZCPOJY023F005	OM4					Optimized		
FRWCPOJY023F005	OM5							
FRSCPOJY023F005	OM4+							



FRSCPOJY023F005

Indoor MPO-16 to Duplex LC Harnesses

Part Number	Fiber Type	Fiber Count	Connector Type End A	Connector Type End B	Breakout lengths	Flame Rating	Performance	Polarity	Length Ft. (m)
FH9CPOL4026F003	OS2	16	MPO-16 Female APC	LC Duplex	24"	Plenum	Standard	8 to 1 / U2	3.0 (0.91)
FH9CPOB4026F003				LC/APC Duplex					
FHZCPOL5026F003	OM4		MPO-16 Female APC	LC Duplex					
FHWCPOL5026F003	OM5								
FHSCPOL5026F003	OM4+								



FH9CPOB4026F003

Indoor MPO-16 to LC Uniboot Push-Pull Harnesses

Part Number	Fiber Type	Fiber Count	Connector Type End A	Connector Type End B	Breakout lengths	Flame Rating	Performance	Polarity	Length Ft. (m)
FH9CPOP4026F003	OS2	16	MPO-16 Female APC	Uniboot LC Push-Pull	24"	Plenum	Standard	8 to 1 / U2	3.0 (0.91)
FH9CPO94026F003				Uniboot LC/APC Push-Pull					
FHZCPOP5026F003	OM4		MPO-16 Female APC	Uniboot LC Push-Pull					
FHWCPPOP5026F003	OM5								
FHSCPPOP5026F003	OM4+								



FHSCPPOP5026F003

Patch Cords

LC Uniboot Push Pull

Part Number	Fiber Type	Fiber Count	Connector Type End A	Connector Type End B	Flame Rating	Performance	Polarity	Length Ft. (m)
F92RPU1U1ONM001	OS2	2	LC Uniboot Push-Pull		Plenum	Standard	A to B	1.0 (3.28)
F92RPU2U2ONM001			LC/APC Uniboot Push-Pull					
FZ2RPU1U1ONM001	OM4		LC Uniboot Push-Pull			Optimized		
FW2RPU1U1ONM001	OM5							
FS2RPU1U1NNM001	OM4+		Ultra					



F92RPU2U2ONM001



FS2RPU1U1NNM001

LC Duplex

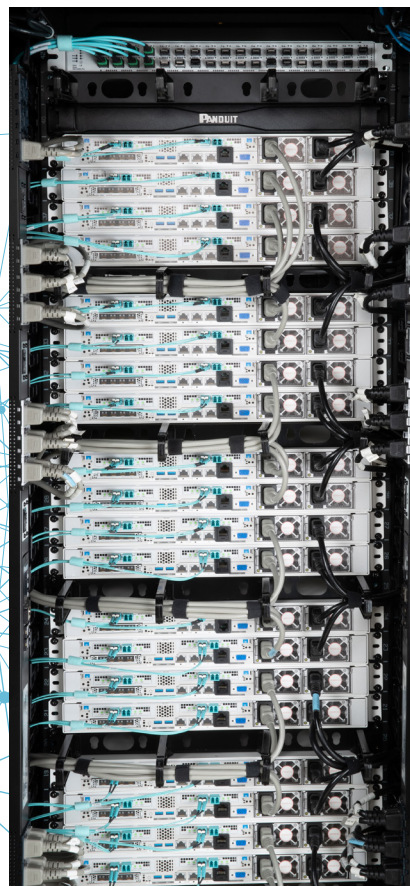
Part Number	Fiber Type	Fiber Count	Connector Type End A	Connector Type End B	Flame Rating	Performance	Polarity	Length Ft. (m)
F92ERLNLNSNM001	OS2	2	LC Duplex		Riser	Standard	A to B	1.0 (3.28)
F92ERB1B1SNM001			LC Duplex APC					
FZ2ERLNLNSNM001	OM4		LC Duplex			Optimized		
FZ2ERLNLNSNM001	OM5							
FS2ERLNLNNM001	OM4+		Ultra					



F92ERLNLNSNM001



FZ2ERLNLNSNM001





PANDUIT®

Panduit Corp.
World Headquarters
Tinley Park, IL 60487

cs@panduit.com
US and Canada: 800.777.3300
Europe, Middle East, and Africa: 44.20.8601.7200
Latin America: 52.33.3777.6000
Asia Pacific: 65.6305.7575

www.panduit.com/base-16

©2024 Panduit Corp. ALL
RIGHTS RESERVED.
FBDG3-SA-ENG
4/2024