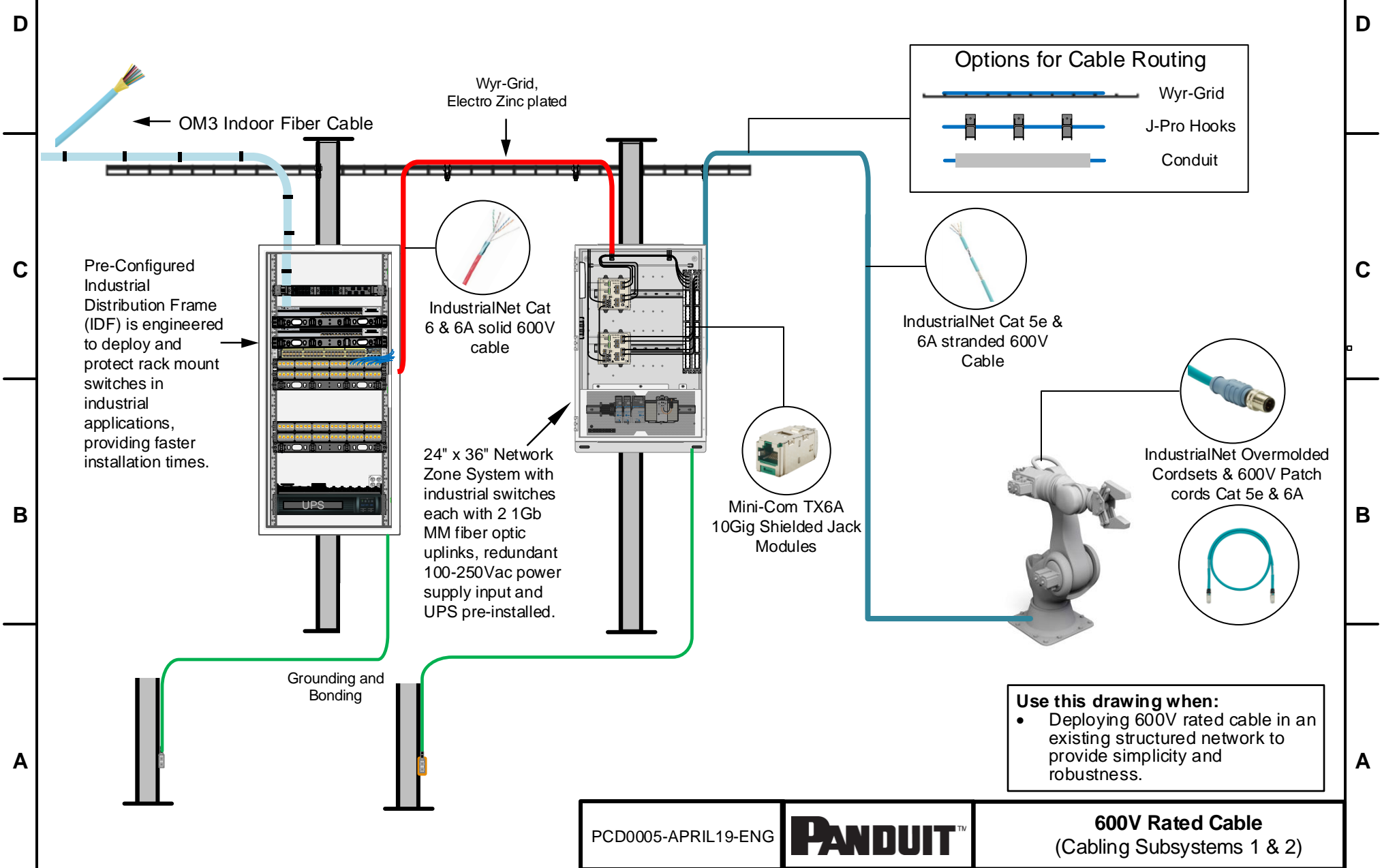


This page presents a deployment of 600V rated cable that is routed back from a robotic machine to a Network Zone System with two industrial switches and back to an IDF, while also presenting three options of cable routing.



**Options for Cable Routing**

- Wyr-Grid
- J-Pro Hooks
- Conduit

**Use this drawing when:**

- Deploying 600V rated cable in an existing structured network to provide simplicity and robustness.

# Bill of Materials

Part Number	Description
<b>Fiber and Copper Cable</b>	
FOPPX12Y	50um OM3 12 Fiber Indoor Armored Cable, Plenum (OFCP), 900um buffered fibers
IFRH6X04RD-UG	Copper Cable, Industrial, Category 6A 4-pair, 23/1 AWG Stranded, F/UTP, CMR, 600V rated, Red.
IFRH6C04RD-UG	Copper Cable, Industrial, Category 6 4-pair, 23/1 AWG Stranded, F/UTP, CMR, 600V rated, Red.
ISFCH5C04ATL-UG	Copper Cable, Industrial, Category 5e 4-pair, 24/7 AWG, SF/UTP, CMR, 600V rated, Oil Res., UV Res., Teal.
<b>Connectors, Patch Cords and Pathways</b>	
CJS6X88TGY	Category 6A, RJ45, 10 Gb/s, 8-position, 8-wire universal shielded black module with integral shield.
ISTPH6X2MTL	Patch cord, IndustrialNet, Category 6A, shielded, 600V, RJ45 plug to RJ45 plug, teal, 2 meter.
ISTPHCH2MTL	Patch cord, IndustrialNet, Category 5e, shielded, 600V, RJ45 plug to RJ45 plug, teal, 2 meter.
ICD25T2NTL*M	IndustrialNet M12 Cordset, Male D-code, Angled Connector, UTP, TPE Jacket, Teal.
ICX15T1NTL*M	IndustrialNet M12 Cordset, Male X-Code, Straight Connector, STP, TPO Jacket, Teal
JP2SBC50-L20	J-Pro Cable support system, with screw-on beam clamp for use with flanges up to 1/2 (12.7mm) thick, 2.00 (50.8mm) max. bundle capacity, nylon 6.6 with metal attachments, black.
WG12BL10	12" W x 10' L Wyr-Grid pathway section
HLB2S-C0	Tak-Ty hook & loop stacked strip cable tie, 7.0 (178mm) length, 0.75 (19.1mm) width, nylon loop, polyethylene hook, black
<b>Network Zone System and Industrial Distribution Frame</b>	
Z23*	Pre-Configured Network Zone System, 24" x 36", mild steel enclosure, for two industrial switches, includes (16) Cat 6 UTP copper patch cords and jacks, (4) MMLC fiber patch cords with (6) adaptors, backplane and cable management.
ZDF48-RA	Pre-configured Industrial Distribution Frame enclosure ready for two access and two distribution switches.

\*Available in a variety of lengths.

\*\*Network Zone Enclosures available in mild steel, stainless steel or sloped versions and various levels of integration.

For an expanded product offering visit [panduit.com/networkpartsamerica](http://panduit.com/networkpartsamerica) or the online catalog at [panduit.com](http://panduit.com).

## About this Configuration

With the continued extension of ethernet enabled devices and machines to the demanding environments of a plant/factory floor, industrial equipment has a growing need to be connected in a robust and smarter way. With Panduit, the deployment of this architecture becomes much easier. From 600V ratings, shielded cable and connectivity, to cable management, and grounding solutions. Panduit has all the products needed to make your industrial network more secure and future ready.

### 600V Rated Cable

Network cabling is not designed or intended to carry high voltages. Network cables can be exposed to high voltage cables in UL 508A control panels, and near manufacturing machines. Panduit offers network cable solutions that meet the 600V Appliance Wire Material (AWM) requirements.

### Purpose

Panduit 600V rated solutions provide the proper UL certifications for use in UL 508A cabinets and enclosures, and for use near high voltage machinery. Using Panduit 600V rated solutions ensure the integrity of your network from interferences and damage from the likes of EMI.