

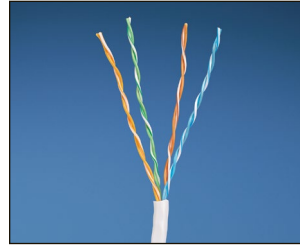
# TX5500™ U/UTP Copper Cable

# PANDUIT®

## SPECIFICATION SHEET

## specifications

Category 5e cable shall exceed IEC 61156-5 and ANSI/TIA-568-C.2 Category 5e component standards. The conductors shall be 24 AWG construction with HDPE insulation. The copper conductors shall be twisted in pairs and all four pairs shall be covered by a flame-retardant PVC jacket.



## technical information

<b>Electrical performance:</b>	Certified channel performance in a 4-connector configuration up to 100 meters and exceeds the requirements of ISO 11801 Class D and ANSI/TIA-568-C.2 Category 5e ratified standards at swept frequencies up to 100 MHz Certified component performance up to 100 meters and exceeds the component requirement of the IEC 61156-5 and ANSI/TIA-568-C.2 Category 5e ratified standards at swept frequencies up to 100 MHz
<b>Conductors/insulators:</b>	24 AWG solid copper insulated with HDPE
<b>Certification:</b>	ANATEL 2488-09-6246
<b>Flame rating:</b>	CMR — UL 1666
<b>PoE compliance:</b>	Meets IEEE 802.3af and IEEE 802.3at for PoE applications
<b>Installation tension:</b>	110 N (25 lbf) maximum
<b>Temperature rating:</b>	0°C to 50°C (32°F to 122°F) during installation -20°C to 75°C (-4°F to 167°F) during operation
<b>Cable jacket:</b>	Flame-retardant PVC
<b>Cable diameter:</b>	4.9mm (0.193 in.) nominal
<b>Cable weight:</b>	8.6 kg/305m (19 lbs./1000 ft.)
<b>Packaging:</b>	305m (1000 ft.) in an easy payout carton Package tested to ISTA Procedure 1A

## key features and benefits

<b>Third party tested</b>	Cable has been tested as part of the TX5500™ U/UTP Copper Cabling System by an independent laboratory and complies with the electrical channel requirements of the following standards: ISO 11801 Class D and ANSI/TIA-568-C.2
<b>Descending length cable markings</b>	Easy identification of remaining cable reduces installation time and cable scrap
<b>Tested beyond the standards</b>	Cable has been characterized to 450 MHz, 350 MHz above the standard
<b>Easy payout carton</b>	Improves installation time and prevents tangling

## applications

TX5500™ U/UTP Cable is a component of the Panduit® TX5500™ Copper Cabling System. The end-to-end system provides Gigabit Ethernet performance with usable bandwidth beyond 100 MHz. With certified performance to the ANSI/TIA-568-C.2 Category 5e and ISO 11801 Class D standards, this system will support the following applications:

- Ethernet 10BASE-T, 100BASE-T (Fast Ethernet), 1000BASE-T (Gigabit Ethernet)
- 155 Mb/s ATM, 622 Mb/s ATM
- Token Ring 4/16

[www.panduit.com](http://www.panduit.com)

### TX5500™ U/UTP Copper Cabling System

#### TX5500™ UTP Copper Cable

**CMR:** PUR5504\*Y

#### Mini-Com® TX5e™ PLUS UTP Jack Module

**Jack module:** CJ5E88TG\*\*

#### TX5e™ UTP Patch Cords – CM

**Meters:** UTPCH1^MY

**Feet:** UTPCH3^MY

#### DP5e™ Angled Punchdown Patch Panels

**24-port, 1 RU:** DPA245E88TGY

**48-port, 2 RU:** DPA485E88TGY

#### DP5e™ Flat Punchdown Patch Panels

**12-port, 1 RU:** DP125E88TGY

**24-port, 1 RU:** DP245E88TGY

**48-port, 2 RU:** DP485E88TGY

#### Mini-Com® Angled Flush Mount Modular Patch Panels

**24-port, 1 RU:** CPPA24FMWBLY

**48-port, 2 RU:** CPPA48FMWBLY

#### Mini-Com® Flat Flush Mount Modular Patch Panels

**24-port, 1 RU:** CPP24FMWBLY

**48-port, 2 RU:** CPP48FMWBLY

#### Termination and Cable Prep Tools

**Termination tools:** EGJT or TGJT

**Wire stripping tool:** CWST

**Wire stripping tool:** CCAST

\*To designate color, add suffix BU (Blue), IG (International Gray), WH (White) or YL (Yellow) prior to the Y.

\*\*To designate color, add suffix AW (Arctic White), IW (Off White), EI (Electric Ivory), IG (International Gray), WH (White), BL (Black), OR (Orange), RD (Red), BU (Blue), GR (Green), YL (Yellow), or VL (Violet).

^For lengths 1 to 10 meters (increments of one meter) and 0.5, 1.5, 2.5, 15, 20 meters, change the length designation in the part number to desired length. For standard colors, add suffix BU (Blue), GR (Green), RD (Red), YL (Yellow), IW (Off White) before Y at the end of the part number. For example, the part number for a blue, 5-meter patch cord is UTPCH5MBUY.

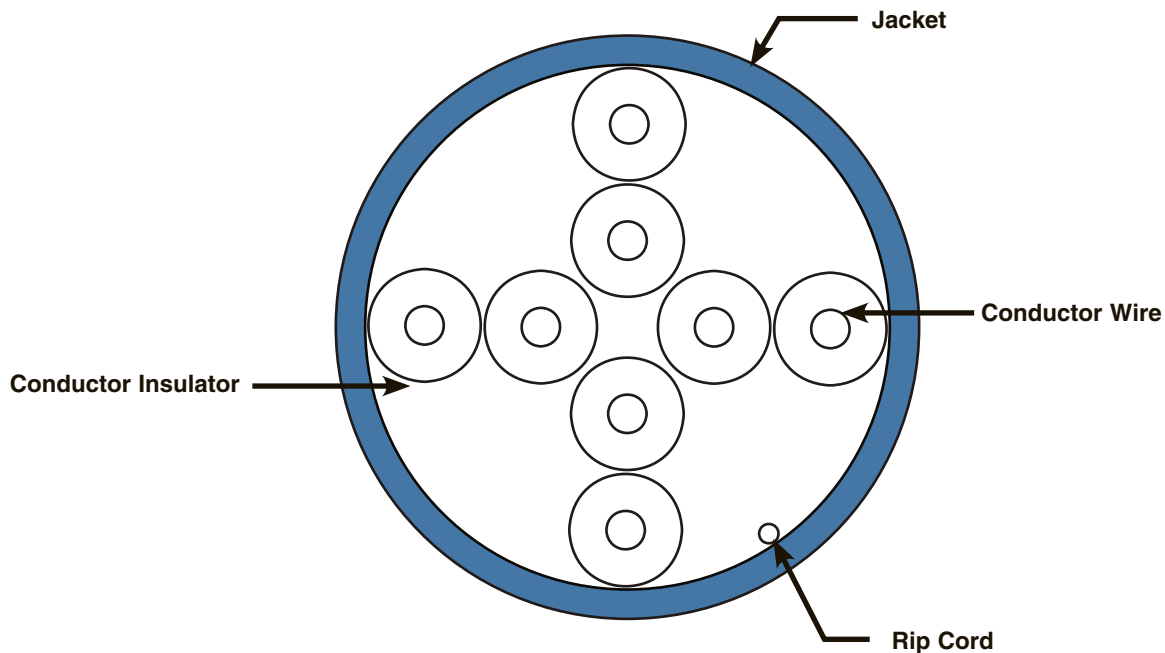
^^For lengths 1 to 20 feet (increments of one foot) and 25, 30, 35, 40 feet, change the length designation in the part number to desired length. For standard cable colors, add suffix BU (Blue), GR (Green), RD (Red), YL (Yellow), IW (Off White) before Y at the end of the part number. For example, the part number for a blue, 5-foot patch cord is UTPCH5BUY.

# TX5500™ U/UTP Copper Cable

## additional specifications

Mechanical Test	
<i>Ultimate Breaking Strength</i>	>400 N (90 lbf).
<i>Minimum Bend Radius</i>	4 x cable diameter
Electrical Test	
<i>Nominal Velocity of Propagation (NVP)</i>	67%

## cable construction



### WORLDWIDE SUBSIDIARIES AND SALES OFFICES

PANDUIT CANADA  
Markham, Ontario  
cs-cdn@panduit.com  
Phone: 800.777.3300

PANDUIT EUROPE LTD.  
London, UK  
cs-emea@panduit.com  
Phone: 44.20.8601.7200

PANDUIT SINGAPORE PTE. LTD.  
Republic of Singapore  
cs-ap@panduit.com  
Phone: 65.6305.7575

PANDUIT JAPAN  
Tokyo, Japan  
cs-japan@panduit.com  
Phone: 81.3.6863.6000

PANDUIT LATIN AMERICA  
Guadalajara, Mexico  
cs-la@panduit.com  
Phone: 52.33.3777.6000

PANDUIT AUSTRALIA PTY. LTD.  
Victoria, Australia  
cs-aus@panduit.com  
Phone: 61.3.9794.9020

For a copy of Panduit product warranties, log on to [www.panduit.com/warranty](http://www.panduit.com/warranty)

For more information

Visit us at [www.panduit.com](http://www.panduit.com)

Contact Customer Service by email: [cs@panduit.com](mailto:cs@panduit.com)  
or by phone: 800.777.3300

**PANDUIT**®

© 2016 Panduit Corp.  
ALL RIGHTS RESERVED.  
**COSP393--WW-ENG**  
2016-06-09