

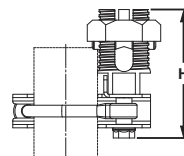
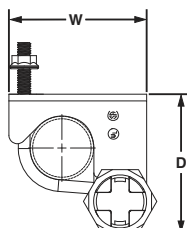


PATENTED

Access Floor Grounding Clamps



Installed on Pedestal



- Bond mesh common bonding network (MCBN) conductors to each other and bond the access floor pedestals to the conductors
- Specifically designed to bond perpendicular MCBN conductors per TIA-942 and TIA-607-B

- Bond to the pedestal with a single bolt to simplify installation
- Accommodate conductors from #6 – 1/0 AWG, minimizes inventory requirements
- Bond round and square access floor pedestals for greater flexibility

| Part Number | Round Pedestal In. | Square Pedestal In. | MCBN Conductor Size Range AWG | Figure Dimensions In. | | | Tightening Torque In. – Lbs. | | Std. Pkg. Qty. | Std. Ctn. Qty. |
|-------------|--------------------|---------------------|-------------------------------|-----------------------|------|------|------------------------------|-------|----------------|----------------|
| | | | | D | W | H | Conductor | Clamp | | |
| GPQC07-1/0 | 3/4 – 7/8 | — | #6 SOL – 1/0 STR | 4.25 | 3.38 | 3.19 | 385 | 150 | 1 | 10 |
| GPQC10-1/0 | 1 – 1 1/8 | 7/8 | #6 SOL – 1/0 STR | 4.19 | 3.38 | 3.19 | 385 | 150 | 1 | 10 |
| GPQC12-1/0 | 1 1/4 | — | #6 SOL – 1/0 STR | 4.53 | 3.44 | 3.19 | 385 | 150 | 1 | 10 |
| GPQC15-1/0 | 1 1/2 | — | #6 SOL – 1/0 STR | 4.47 | 3.44 | 3.19 | 385 | 150 | 1 | 10 |
| GPQC17-1/0 | 1 3/4 | — | #6 SOL – 1/0 STR | 5.19 | 4.00 | 3.19 | 385 | 150 | 1 | 10 |
| GPQC20-1/0 | 2 | — | #6 SOL – 1/0 STR | 5.06 | 4.00 | 3.19 | 385 | 150 | 1 | 10 |



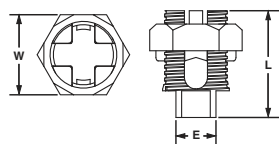
DB
RATED

Split Bolt Quad Clamp, Bronze



- Split bolt design allows easy insertion of perpendicular conductors speeding installation
- UL 467 Listed and CSA Certified for direct burial in earth or concrete
- UL Listed and CSA Certified for use up to 600 V and temperature rated 90°C

- Each clamp accepts up to two conductors for a high performance bond with faster installation
- Wide wire range-taking capability minimizes inventory requirements
- Made from high strength, electrolytic bronze to provide reliable grounding connections



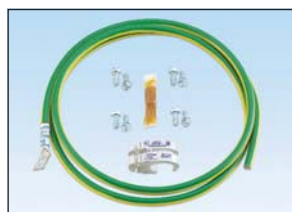
| Part Number | Conductor Size Range | Figure Dimensions In. | | | Tightening Torque In. – Lbs. | Std. Pkg. Qty. |
|-------------|----------------------|-----------------------|------|------|---|----------------|
| | | E | W | L | | |
| SBQC1/0-X | #6-1/0 AWG | 0.75 | 1.50 | 2.00 | #6 – #4 AWG – 165 #3 – #1 AWG – 275 1/0 AWG – 385 | 10 |



Common Bonding Network (CBN) Jumper Kits

- Bond the rack or cabinet to the MCBN
- HTAPs, included in kits, require crimping tool and die; see the CT-930 crimping tool on page M.47, the CT-2930/L and CT-2930/LE crimping tools on page M.48 and the CD-930H-250 and CD-920H-2 crimping dies on page M.49

- HTAPs are UL Listed and CSA Certified for applications up to 600 V when crimped with Panduit and specified competitor crimping tools and Panduit crimping dies
- Engineered to comply with US and International grounding requirements



| Part Number | MCBN Conductor Size AWG | Part Description | Std. Pkg. Qty. | Std. Ctn. Qty. |
|--------------|-----------------------------------|---|----------------|----------------|
| RGCBNJ660P22 | HTCT2-2-1 #6 – #2 AWG | #6 AWG (16mm ²) jumper; 60" (1.52m) length; 45° bent lug on grounding strip side; provided with .16 oz. (5cc) of antioxidant, two each #12-24 x 1/2", M6 x 12mm, #10-32 x 1/2" and M5 x 12mm thread-forming screws and a copper compression HTAP* for connecting to the MCBN. | 1 | 10 |
| RGCBNJ660PY | HTCT250-2-1 #2 AWG – 250 kcmil | | 1 | 10 |

*HTAPs also sold separately, see pages M.41–M.42 of SA-NCCB51.