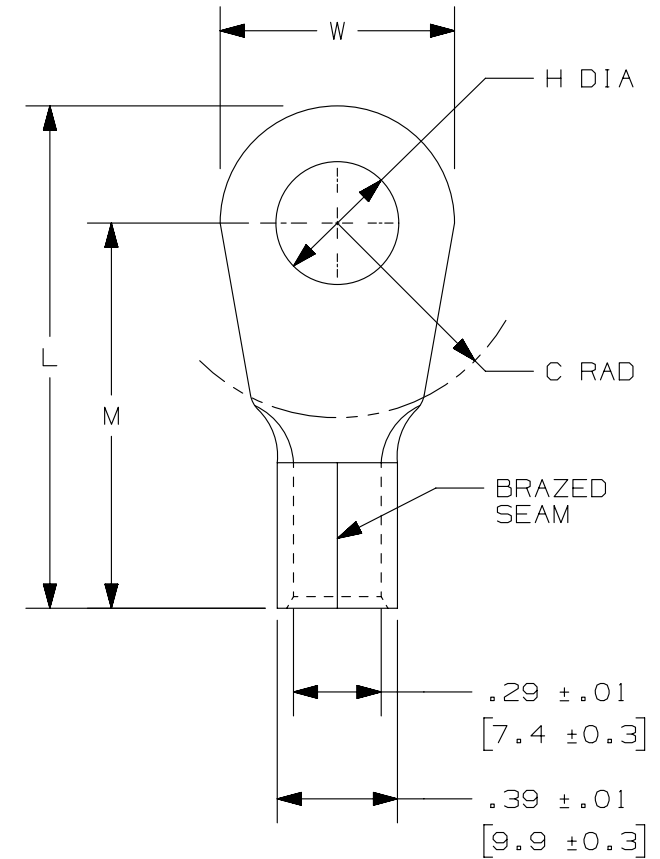


THIS COPY IS PROVIDED ON A RESTRICTED BASIS AND IS NOT TO BE USED IN ANY WAY DETRIMENTAL TO THE INTERESTS OF PANDUIT CORP.

PANDUIT PART #	STUD SIZE		DIMENSIONS in. [mm]				
	ENGLISH	METRIC	L ± .03 [0,8]	W ± .01 [0,3]	C ± .02 [0,5]	M ± .03 [0,8]	H ± .01 [0,3]
P4-10RHT6	#10	M5	1.40 [35,6]	.55 [14,0]	.50 [12,7]	1.12 [28,5]	.20 [5,1]
P4-14RHT6	1/4"	M6	1.40 [35,6]	.55 [14,0]	.50 [12,7]	1.12 [28,5]	.27 [6,9]
P4-56RHT6	5/16"	M8	1.46 [37,1]	.68 [17,3]	.50 [12,7]	1.12 [28,5]	.33 [8,4]
P4-38RHT6	3/8"	[9.5mm]	1.46 [37,1]	.68 [17,3]	.50 [12,7]	1.12 [28,5]	.39 [9,9]
P4-12RHT6	1/2"	M12	1.55 [39,4]	.68 [17,3]	.53 [13,5]	1.12 [28,5]	.52 [13,2]



NOTES:

1. FOR: #4 AWG STRANDED COPPER WIRE
2. 650°F [343°C] MAX. OPERATING TEMPERATURE
3. SEE [www.panduit.com](http://www.panduit.com) FOR PACKAGE QUANTITIES INDICATED BY PART NUMBER SUFFIX
4. MATERIAL: .050" [1,27] THK COPPER, NICKEL PLATED
5. DIMENSIONS IN BRACKETS ARE IN MILLIMETERS
6. INSTALLATION TOOL: CT-2600 WITH CD-2600-P4
7. WIRE STRIP LENGTH: 1/2 <sup>+1/32</sup><sub>0</sub> [12,7 <sup>+0,8</sup><sub>0</sub>]

					TITLE <b>#4 BARREL NON-INSULATED HIGH TEMPERATURE RING TERMINAL</b> CUSTOMER DRAWING							
					ITEM REVISION NAME N41743BA/04							
					DATASET FILE NAME N41743BA_DC/04							
					UNLESS OTHERWISE SPECIFIED, DIMENSIONAL TOLERANCES ARE: IN [mm] .X ± .XXX ± .XX ± ANGLES ±							
					MATERIAL: <b>SEE NOTES</b>							
					DRAWING NUMBER: A41743							
04	4/14	JHNU	JHNU	RGB	REVISED NOTE 6 REVISED TITLE BLOCK, PANDUIT LOGO	N41743BA-A41743						
REV	DATE	BY	CHK	APR	DESCRIPTION	ECN	DRAWN BY BCT	DATE 6/08	CHK LCA	SCALE N/A	SHT 1 OF 1	SIZE A

D10100DA/16