

## Harness Board Accessories

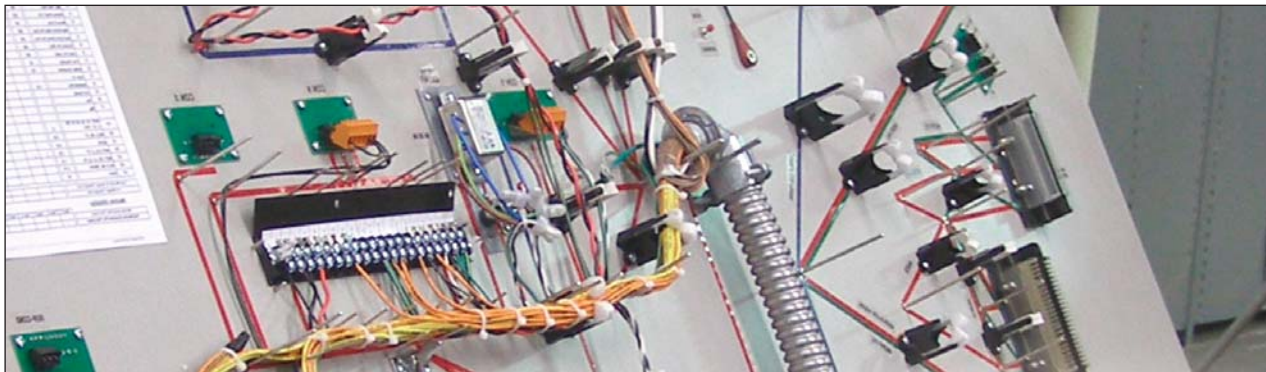
Panduit harness board accessories allow an installer to quickly configure a specific arrangement of wires, to aid in required wire bundling and termination. Panduit's comprehensive line of harness board accessories can significantly reduce the labor input required for field installation of wires and cables and simplify harness board operations. These products hold wire bundles at a uniform height from a harness board to ease manual or automatic cable tie installation. These accessories help maintain end product consistency, reduce costly rework and maximize workplace safety.



### Key Features

### Benefits

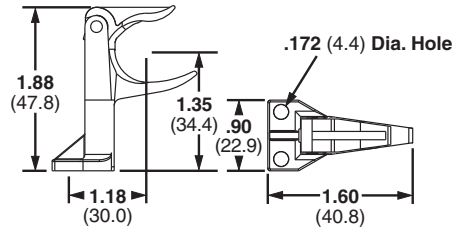
<b>Large selection of board-mounted accessories</b>	Comprehensive and versatile offering ensures there is a product to fit virtually every harness board application
<b>A wide range of sizes</b>	Panduit harness board accessories can be used to manage wire configurations up to 2 inches bundle diameter for maximum flexibility
<b>Uniform standoff height</b>	Accessories space the wire bundle at a uniform distance and height from the harness board to allow simple cable tie application using manual or automatic tooling to speed installation
<b>Mounts designed to work with harness board accessories</b>	Panduit mounts can be integrated into the wiring harness at the harness board to simplify deploying the harness onto the finished assembly to speed installation
<b>Snap-in, snap-out functionality</b>	Harness board accessories hold the wires in a tight bundle, yet allow completed harness to be easily removed by lifting upward on the harness
<b>Spring wire breakout and wire end holders</b>	Individual wires are held in the bundle to maintain harness structure while allowing consistent termination of wires



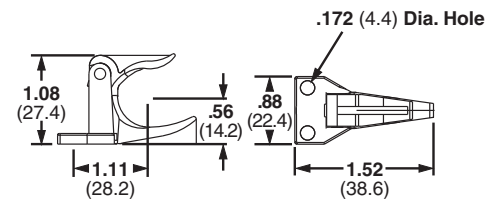
## Corner Posts

- Designed to pre-form tight bundles at harness corners and breakouts

- Top arm rotates upward for easy removal of completed harness



CPH



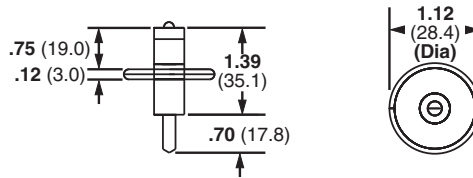
CPL

Part Number	Max. Bundle Diameter		Material	Color	Mounting Method	Std. Pkg. Qty.	Std. Ctn. Qty.
	In.	mm					
CPH.75-S8-X	.75	19.0	Nylon 6.6	Black	Two #8 (M4) Screws	10	100
CPL.75-S8-X							

## T-Junction Fixture

- Forms cable junctions

- Fixture moves down for easy harness removal

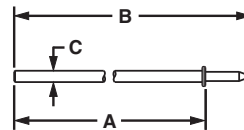


Part Number	Max. Bundle Diameter		Material	Color	Mounting Method	Std. Pkg. Qty.	Std. Ctn. Qty.
	In.	mm					
TJF-X	1.34	34.0	Nylon 6.6 and Nickel Plated Steel	Black	Nail	10	100

## Harness Board Nails

- Speed routing of wires
- Uniform driving depth is insured by a collar stop

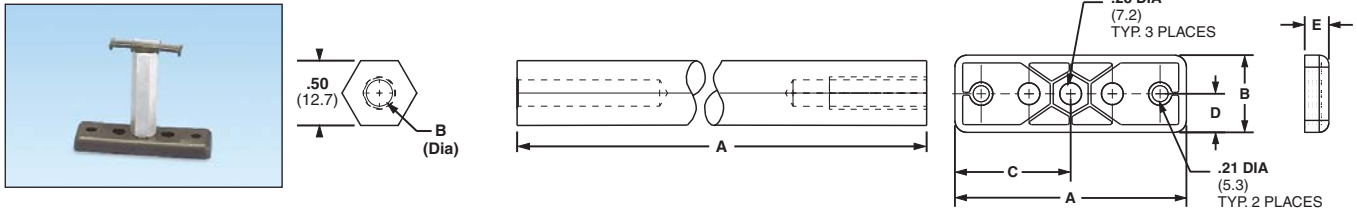
- Smooth finish on nails prevents abrasion to wire jackets



Part Number	Length A		Overall Length B		Thickness C		Material	Mounting Method	Std. Pkg. Qty.	Std. Ctn. Qty.
	In.	mm	In.	mm	In.	mm				
HBN.75-T	.75	19.1	1.40	35.56	.07	1.9	Nickel Plated Steel	Hammered into harness board	200	1000
HBN1-T	1.00	25.4	1.65	41.91	.07	1.9			200	1000
HBN1.5-T	1.50	38.1	2.16	54.86	.08	2.1			200	1000
HBN2-T	2.00	50.8	2.66	67.56	.09	2.4			200	1000
HBN2.5-T	2.50	63.5	3.16	80.26	.11	2.8			200	1000
HBN3-T	3.00	76.2	3.67	93.22	.12	3.0			200	1000
HBN4-T	4.00	101.6	4.67	118.62	.14	3.7			200	1000

## Harness Board Standoff Posts and Adapter

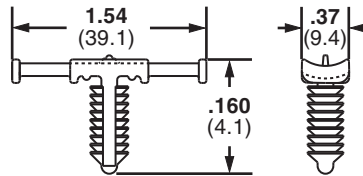
- Used to hold a push mount accessory or cable tie at a specific location on a harness board



Part Number	Height A		Hole Diameter B		Length C		Width D		For Use With	Material	Mounting Method	Std. Pkg. Qty.	Std. Ctn. Qty.
	In.	mm	In.	mm	In.	m	In.	mm					
HB2SP19-X	2.00	50.8	.20	5.2	2.00	50.8	.50	12.7	PLWP, PRWP, WS, VWS, HWS, TPM	Aluminum	M6 Screw	10	100
HB2SP25-X	2.00	50.8	.30	7.5	4.00	101.6	.50	12.7	PLWP, PRWP, PLP, THMS, HCMP, PMCC	Aluminum	M6 Screw	10	100
HBUA-X	.31	7.9	.28	7.1	3.00	76.2	1.00	25.4	HB2SP19-X, HB2SP25-X	Nylon 6.6	#10 (M5) Screw	10	100

## Tie Harness Mounts – Nylon and Heat Stabilized Nylon 6.6

- Designed to be attached to the wire harness during assembly
- Cable ties can be installed by hand or with Panduit automatic cable tie tools
- Used with harness board standoff posts
- Available with or without corrugated tubing location tab
- Natural nylon material for indoor use
- Heat stabilized nylon material (30) for high temperature applications – indoor use



Part Number	Used with Cable Ties*	Maximum Panel Thickness		Panel Hole Diameter		Material	Color	Mounting Method	Std. Pkg. Qty.	Std. Ctn. Qty.
		In.	mm	In.	mm					

**FOR CORRUGATED TUBING – A location tab on the mount shelf aligns with the corrugated tubing grooves to ensure proper mount location during assembly**

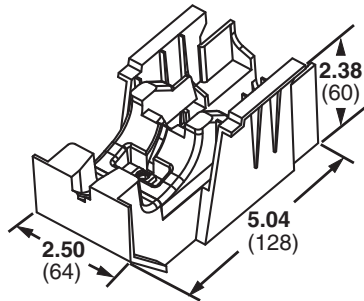
THMSP20-C	M, I, S	.160	4.1	.244 – .283	6.2 – 7.2	Nylon 6.6	Natural	Push barb	100	1000
THMSP20-C30	M, I, S	.160	4.1	.244 – .283	6.2 – 7.2	Heat Stabilized Nylon 6.6	Black	Push barb	100	1000
THMSP25-C	M, I, S	.230	5.8	.244 – .283	6.2 – 7.2	Nylon 6.6	Natural	Push barb	100	1000
THMSP25-C30	M, I, S	.230	5.8	.244 – .283	6.2 – 7.2	Heat Stabilized Nylon 6.6	Black	Push barb	100	1000

**FOR DISCRETE WIRING – No location tab**

THMSP20F-C	M, I, S	.160	4.1	.244 – .283	6.2 – 7.2	Nylon 6.6	Natural	Push barb	100	1000
THMSP20F-C30	M, I, S	.160	4.1	.244 – .283	6.2 – 7.2	Heat Stabilized Nylon 6.6	Black	Push barb	100	1000
THMSP25F-C	M, I, S	.230	5.8	.244 – .283	6.2 – 7.2	Nylon 6.6	Natural	Push barb	100	1000
THMSP25F-C30	M, I, S	.230	5.8	.244 – .283	6.2 – 7.2	Heat Stabilized Nylon 6.6	Black	Push barb	100	1000

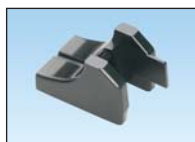
\*Cable tie cross section sizes: M = Miniature, I = Intermediate, S = Standard.

## Harness Board Fixtures



ATMB (Base)

- Automatic alignment orients the tool head with the mount for reliable feeding of the cable tie through the mount to speed installation
- Multiple fixture configurations allow mounting in horizontal, vertical, or 45° orientation to reduce installation time and improve ergonomics
- Color designation ensures inserts and mounts are correctly matched
- Integrated switch\* capability enables placement of a switch to detect the mount's presence providing an input to a quality control system, eliminating the need for additional inspection
- Activation device on harness board fixture prevents tool from operating unless it is properly engaged in the fixture for operator safety



Part Number	Description	Mounting	Color	Material	Std. Pkg. Qty.*	Std. Ctn. Qty.
ATMB	Base	Screw base to harness board with 1/4" screws	Black	Acetal	10	10
ATMI-W187-X	Insert for ATM-W187 mount	Snaps into ATMB	Yellow	Acetal	10	50
ATMI-W250-X	Insert for ATM-W250 mount	Snaps into ATMB	Red	Acetal	10	50
ATMI-XMR	Used for cable tie installations where mounts are NOT required	Snaps into ATMB	Black	Acetal	10	50
ATMC	Clamp used to secure the ATMB (base) in a vertical or 45° position	Screw clamp to harness board with 1/4" screws	Black	Steel	10	10

Order number of pieces required, in multiples of Standard Package Quantity.

\*The Omron Electronics D2SW-3L1HS switch is compatible with the ATM system. Similar switches from other manufacturers may also be suitable.

Omron is a registered trademark of Omron Corporation.