

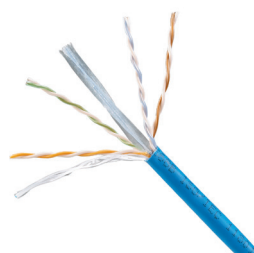
# TX6™ Category 6 U/UTP Copper Cable - Europe

# PANDUIT™

## SPECIFICATION SHEET

## specifications

Category 6 cable shall meet the IEC 61156-5 and ANSI/TIA-568-C.2 Category 6 component standards. The conductors shall be 24 AWG insulated with polyethylene. The copper conductors shall be twisted in pairs, separated by a cross divider and covered by a LSFRZH jacket.



## technical information

<b>Electrical performance:</b>	Certified channel performance in a 4-connector configuration up to 100 meters and exceeds ISO 11801 Class E and ANSI/TIA-568-C.2 Category 6 standards at swept frequencies up to 250MHz.  Certified component performance up to 100 meters and exceeds the component requirements of the IEC 61156-5 and ANSI/TIA-568-C.2 Category 6 standards at swept frequencies up to 250MHz
<b>Conductors/insulators:</b>	24 AWG solid copper insulated with polyolefin
<b>Flame rating:</b>	EN 50575: Euroclass Cca-s1a-d1-a1
<b>PoE compliance</b>	Meets IEEE 802.3af, IEEE 802.3at and 802.3bt for PoE applications
<b>Installation tension:</b>	110N (25 lbf)
<b>Temperature rating:</b>	-20°C to 75°C (-4°F to 167°F) during operation 0°C to 50°C (32°F to 122°F) during installation
<b>Insulation diameter:</b>	0.91 - 1.01mm (0.035 - 0.040 inch.)
<b>Cable jacket:</b>	LSFRZH (Low Smoke Fire Retardant Zero Halogen)
<b>Cable diameter:</b>	6.1mm (0.240 inch.) nominal
<b>Cable weight:</b>	PUY6C04**-CED: 21kg/500m (46 lbs./1000 ft.) PUY6C04**-CE: 13kg/305m (28 lbs./1000 ft.)
<b>Packaging:</b>	PUY6C04**-CED: 500m (1640 ft.) on reel. PUY6C04**-CE: 305m (1000 ft.) easy payout carton.

## key features and benefits

<b>Third party tested</b>	Cable has been tested as part of the TX6™ Category 6 U/UTP Copper Cabling System by an independent laboratory and complies with the electrical channel requirements of the following standard: ISO 11801 Class E and ANSI/TIA-568-C.2 Category 6 standard
<b>Easy payout carton or reel</b>	Ensures proper performance and provides quick installation
<b>Descending length cable markings</b>	Easy identification of remaining cable reduces installation and cable scrap
<b>Cross divider</b>	Separates twisted pairs for robust cable performance
<b>Tested beyond the Standards</b>	Cable has been characterized to 350MHz, 100MHz above the standard

## applications

TX6™ U/UTP Copper Cable is a component of the PANDUIT TX6™ U/UTP Copper Cabling System. This end-to-end system provides Gigabit Ethernet performance with usable bandwidth beyond 250MHz. With certified performance to the ANSI/TIA-568-C.2 Category 6 and ISO 11801 Class E standards, this system will support the following applications:

- Ethernet 10BASE-T
- 100BASE-T (Fast Ethernet)
- 1000BASE-T (Gigabit Ethernet)

### TX6™ U/UTP Copper Cabling System

#### TX6™ U/UTP Copper Cable

**LSFRZH:** PUY6C04\*\*-CED<sup>‡</sup>  
**LSFRZH:** PUY6C04\*\*-CE<sup>‡</sup>

#### Mini-Com® TX6™ PLUS U/UTP Jack Module

**Jack module:** CJ688TG\*\*\*

#### TX6™ PLUS U/UTP Patch Cords – CM

**Foot lengths:** UTPSP3^Y  
**Meter lengths:** UTPSP1^^MY

#### TX6™ PLUS U/UTP Patch Cords – LSZH

**Foot lengths:** UTPSPL3^Y  
**Meter lengths:** UTPSPL^^1MY

#### DP6™ PLUS Punchdown Patch Panels

**Angled, 24-port, 1RU:** DPA24688TGY  
**Angled, 48-port, 2 RU:** DPA48688TGY  
**Flat, 24-port, 1 RU:** DP24688TGY  
**Flat, 48-port, 2 RU:** DP48688TGY

#### Mini-Com® Flush Mount Modular Patch Panels

**Angled, 24-port, 1 RU:** CPPA24FMWBLY  
**Angled, 48-port, 2 RU:** CPPA48FMWBLY  
**Flat, 24-port, 1 RU:** CPP24FMWBLY  
**Flat, 48-port, 2 RU:** CPP48FMWBLY

#### Termination and Cable Prep Tools

**Termination tools:** EGJT-1 or TGSJT  
**Conductor snipping tool:** CWST  
**Conductor stripping tool:** CCAST

\*\* To designate cable color, add suffix BU (Blue) or WH (White). For additional cable colors, contact Customer Service.

‡ Packaging is as follows: -CED = 500m (1640 ft.)  
-CE = 305m (1000 ft.)

\*\*\* For jack color, replace suffix with: IW (Off White), EI (Electrical Ivory), IG (International Gray), AW (Arctic White), WH (White), BL (Black), BU (Blue), RD (Red), YL (Yellow), GR (Green), or VL (Violet). Add -24 to end of part number for 24 pack convenience package.

^For standard foot lengths other than 3 feet, replace the 3 in the part number with 1 to 50ft. (1 foot increments) and 55 to 200ft. (5 foot increments). For standard colors other than Off White, add suffix BU (Blue), RD (Red), YL (Yellow), or GR (Green) before the Y at the end of the part number. For example, the part number for a blue, CM, Category 6, 5-foot patch cord is UTPSP5BUY.

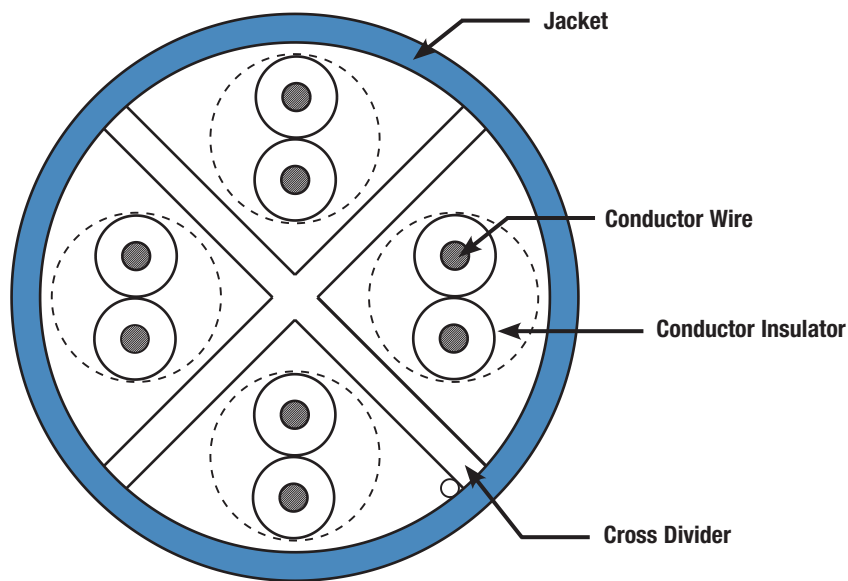
^^For standard meter lengths other than 1 meter, replace the 1 in the part number with 0.5 - 10m (0.5 meter increments), 1 - 20m (1 meter increments) and 25 - 60m (5 meter increments). For standard colors other than Off White, add suffix BU (Blue), RD (Red), YL (Yellow), or GR (Green) before Y at the end of the part number. For example, the part number for a blue, CM, Category 6, 5-meter patch cord is UTPSP5MBUY.

# TX6™ Category 6 U/UTP Copper Cable - Europe

## additional specifications

<i>Mechanical Test</i>	
Ultimate Breaking Strength	>400 N (90 lbf)
Minimum Bend Radius	4 x cable diameter
<i>Electrical Test</i>	
Nominal Velocity of Propagation (NVP)	65%
Operating Voltage, Maximum	80V

## cable construction



### WORLDWIDE SUBSIDIARIES AND SALES OFFICES

PANDUIT US/CANADA  
Phone: 800.777.3300

PANDUIT EUROPE LTD.  
London, UK  
cs-emea@panduit.com  
Phone: 44.20.8601.7200

PANDUIT SINGAPORE PTE. LTD.  
Republic of Singapore  
cs-ap@panduit.com  
Phone: 65.6305.7575

PANDUIT JAPAN  
Tokyo, Japan  
cs-japan@panduit.com  
Phone: 81.3.6863.6000

PANDUIT LATIN AMERICA  
Guadalajara, Mexico  
cs-la@panduit.com  
Phone: 52.33.3777.6000

PANDUIT AUSTRALIA PTY. LTD.  
Victoria, Australia  
cs-aus@panduit.com  
Phone: 61.3.9794.9020

For a copy of Panduit product warranties, log on to [www.panduit.com/warranty](http://www.panduit.com/warranty)

For more information

Visit us at [www.panduit.com](http://www.panduit.com)

Contact Customer Service by email: [cs@panduit.com](mailto:cs@panduit.com)  
or by phone: 800.777.3300

**PANDUIT**™

©2018 Panduit Corp.  
ALL RIGHTS RESERVED.  
COSP420--WW-ENG  
4/2018