

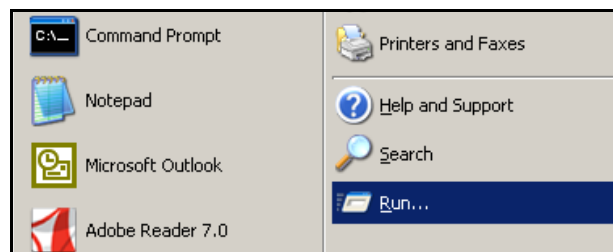
## Logging into the PANVIEW iQ™ Panel Manager

It is important to understand what firmware version(s) you are currently running so that you may perform any necessary firmware updates appropriate for your hardware. Before you begin these instructions, however, it is necessary that you complete following prerequisites:

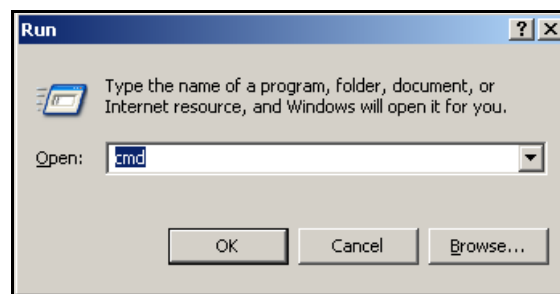
- Install and connect the PVIQ hardware as indicated in the System Hardware Installation Instructions.
- Make sure that you have completed all Firmware Preparations as instructed in Technical Reference # TR44
- Make sure that you have access to a DHCP server

### Display Firmware Version

1. Ensure that the first Panel Manager (PM) of the Ethernet daisy chain is connected to a subnet with an available DHCP server.
2. Ensure that the laptop's Ethernet port is set to obtain an IP Address automatically (DHCP)—see your Windows help files for more info.
3. Connect the laptop computer to the available RJ45 port on the last PM of the Ethernet daisy chain.
4. Open a Command window (cmd.exe) on the PC by navigating to the Microsoft® Windows® “Start” icon and selecting the “Run” icon.



5. In the dialog box, type `cmd` (see below) and then hit the OK button.



6. Copy the `pviqutil.exe` to the C drive (i.e. `c:\`).
7. Execute the `pviqutil.exe` function to determine the MAC to IP mapping.
8. Open a Command window (`cmd.exe`) on the PC by as instructed in steps 4 and 5 (above).
9. Execute the `pviqutil.exe` function to determine the MAC to IP mapping by typing "`pviqutil.exe`" at the `C:>` prompt (`pviqutil.exe` can be found on the Installation CD).

```
C:\WINDOWS\system32\cmd.exe
Microsoft Windows XP [Version 5.1.2600]
(C) Copyright 1985-2001 Microsoft Corp.

C:\Documents and Settings\ >cd \
C:\>pviquitil.exe
```

10. The screen will display the necessary MAC and IP mapping information (as shown below).

```
C:\WINDOWS\system32\cmd.exe
Microsoft Windows XP [Version 5.1.2600]
(C) Copyright 1985-2001 Microsoft Corp.

C:\Documents and Settings\tgf>cd \
C:\>pviquitil.exe

  There is 1 interface
    1: network address 172.21.50.0

Search Network 172.21.50.0,
It takes 10 to 30 seconds, please wait ...

172.21.50.55      00:0F:9C:00:3E:2B
172.21.50.252    00:0F:9C:00:3C:A3
172.21.51.14     00:0F:9C:00:3C:C1
172.21.51.15     00:0F:9C:00:3E:1E
172.21.51.37     00:0F:9C:00:39:54
172.21.51.39     00:0F:9C:00:3C:BC
172.21.51.46     00:0F:9C:00:3E:1B
172.21.51.48     00:0F:9C:00:39:61
172.21.51.49     00:0F:9C:00:3C:A0
172.21.51.51     00:0F:9C:00:3B:1E

Done!! Press the Enter key to exit ...
```

11. Telnet into the PVIQ device (i.e. "telnet 172.21.51.46").

```
C:\WINDOWS\system32\cmd.exe
Microsoft Windows XP [Version 5.1.2600]
(C) Copyright 1985-2001 Microsoft Corp.

C:\Documents and Settings\name>telnet 172.21.51.46
```

12. At the login prompt, use the following to bring up the welcome Screen.

- o **login:** admin
- o **password:** panduit

```
Telnet 172.21.51.46
Welcome to Panduit Shell ...
This system is to be used by authorized personnel only.

Username: admin
Password:*****_
```