

28 AWG Selection Guide - Category 6A, 6, & 5e

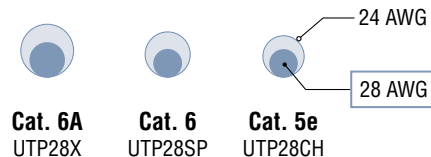
High Density Cabling Solutions

Family of innovative 28 AWG solutions which increase cable pathway capacities, enable higher density layouts, and improve ease of cable management.

Best for:

- Overcrowded pathways in **existing** Telecom Rooms & Data Centers
- Enabling smaller pathways in **new** Telecom Rooms & Data Centers
- Where <100 meter maximum channel lengths are OK

28 AWG Size Comparison



[Approximate cord diameter to scale]

28 AWG Patch Cords



UTP28SP[^]
(UTP)

- Less than 50% the size of traditional 24 AWG patch cords
- Provide up to 96 meters of channel length (when using 6 meters of patch)
- Support PoE, PoE+, and PoE++
- 100% tested to applicable component limits
- 1.9 de-rating factor for all cords
- Available in many standard colors

Part Number	Cord Diameter	Performance	Description
UTP28X [^]	0.185"	Category 6A	Category 6A Performance 28 AWG UTP CM/LSZH Patch Cord
UTP28SP [^]	0.150"	Category 6	Category 6 Performance 28 AWG UTP CM/LSZH Patch Cord
UTP28CH [^]	0.149"	Category 5e	Category 5e Performance 28 AWG UTP CM/LSZH Patch Cord

* = Length in feet. Lengths 1 to 50 feet (in 1 ft. increments) and 55 to 130 feet (in 5 ft. increments).

[^] = Color. No suffix designates Off White color. For other colors, suffix: BL (Black), BU (Blue), GR (Green), GY (Gray), OR (Orange), RD (Red), VL (Violet), or YL (Yellow); PK (Pink) is available as cord color option for UTP28SP only.



STP28X#M[^]
(F/UTP)

STP28X#M [^]	0.185"	Category 6A	Category 6A Performance 28 AWG F/UTP CM/LSZH Patch Cord
-----------------------	--------	-------------	---

= Length in meters. Lengths 0.5 to 10 meters (in 0.5 meter increments), 11 to 20 meters (in 1 meter increments), and 25 to 40 meters (in 5 meter increments).

[^] = Color. Add suffix: BL (Black), BU (Blue), GR (Green), IG (Int'l Gray), OR (Orange), RD (Red), VL (Violet), YL (Yellow).

28/30 AWG Modular Jacks



CJT688TGAW

- 100% tested and individually serialized
- Required for terminating to wires of Panduit 28 AWG patch cords
- Terminates 28 AWG solid/stranded and 30 AWG solid conductors

Part Number	Performance	Description
CJT6X88TG ^{**}	Category 6A	Mini-Com [®] TX6A [™] 10Gig [™] 28/30 AWG UTP Jack Module
CJT688TG ^{**}	Category 6	Mini-Com [®] TX6 [™] PLUS 28/30 AWG UTP Jack Module
CJT5E88TG ^{**}	Category 5e	Mini-Com [®] TX5e [™] 28/30 AWG UTP Jack Module

^{**} = Color. Add suffix: IW (Off White), EI (Electric Ivory), IG (Int'l Gray), AW (Arctic White), BL (Black), BU (Blue), GR (Green), RD (Red), OR (Orange), VL (Violet), YL (Yellow), WH (White), BR (Brown).

28 AWG Modular Plugs



SP628-C

- Required for terminating to wires of Panduit 28 AWG patch cords
- Patented tangle-free latch prevents snags and provides easy release

Part Number	Performance	Description
SP628-C	Category 6A & 6	TX6 [™] PLUS 28 AWG UTP Modular Plug, 100 Pack
MP528-C	Category 5e	PanPlug [™] 28 AWG UTP Modular Plug, 100 Pack

Plug housings and boots are clear.

High Density Cabling Solutions

28 AWG Switch Harnesses



QPPSDBBB**



QPCSDBBBB**



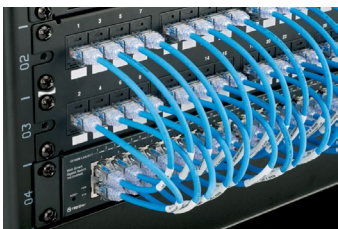
QPCSDBWXB**

- Readily available harnesses using Panduit 28 AWG components for common switch-to-panel cabling approaches
- Reduces network rack cabling installation time by 75% or more compared to loose cord cabling
- Multiple cable bundle counts, lengths, and configurations available
- Enables quick and easy routing within tight spaces
- Ensures cleanly dressed IDF/MDF cabling

Part Number	Performance	Description
QPPSDBAB**	Category 6	6-Cable Switch Patching Harness, Cat 6 28 AWG Blue UTP CM/LSZH Cable, Blue Plug Pack to Modular Plugs
QPPSDBBB**	Category 6	12-Cable Switch Patching Harness, Cat 6 28 AWG Blue UTP CM/LSZH Cable, Blue Plug Pack to Modular Plugs
QPCSDBABB**	Category 6	6-Cable Switch Port Harness, Cat 6 28 AWG Blue UTP CM/LSZH Cable, Blue Plug Pack to Pre-terminated Cassette with Blue Jacks
QPCSDBBBB**	Category 6	12-Cable Switch Port Harness, Cat 6 28 AWG Blue UTP CM/LSZH Cable, Blue Plug Pack to Pre-terminated Cassette with Blue Jacks
QPCSDB6XB**	Category 6	6-Cable Switch Port Harness, Cat 6 28 AWG Blue UTP CM/LSZH Cable, Loose Plugs to Pre-terminated Cassette with Blue Jacks
QPCSDBWXB**	Category 6	12-Cable Switch Port Harness, Cat 6 28 AWG Blue UTP CM/LSZH Cable, Loose Plugs to Pre-terminated Cassette with Blue Jacks

** = Length in feet. Lengths of 5, 7, 10, 14, and 20 feet (indicated as 05, 07, 10, 14, and 20)

28 AWG Switch Patching Cords & Kits



UTP28SP8INBU-48

- Convenient cords and kits for direct 1:1 port patching of switch to panel
- Uses 8-inch Category 6 28 AWG patch cords to directly connect from switch port to adjacent patch panel
- Kits include 48 patch cords, vertically numbered patch panel, and strain relief bar
- Eliminates need for horizontal manager, reducing cost & providing more RU space

Patch Cords only

Part Number	Performance	Description
UTP28SP8IN^	Category 6	8-inch Category 6 Performance 28 AWG UTP CM/LSZH Patch Cord
UTP28X8IN^	Category 6A	8-inch Category 6A Performance 28 AWG UTP CM/LSZH Patch Cord

^ For standard colors other than Off White, add suffix BL (Black), BU (Blue), GR (Green), GY (Gray), OR (Orange), RD (Red), VL (Violet), or YL (Yellow); PK (Pink) is available as cord color option for UTP28SP only.
Add -48 to order a bulk pack of 48 patch cords.

Switch Patching Kits

CPP48KFVPCWH	Category 6	48-Port Switch Patching Kit with Off-White Patch Cords, Vertically Numbered Patch Panel, and Strain Relief Bar
CPP48KFVPCBU	Category 6	48-Port Switch Patching Kit with Blue Patch Cords, Vertically Numbered Patch Panel, and Strain Relief Bar

WORLDWIDE SUBSIDIARIES AND SALES OFFICES

PANDUIT CANADA
 Markham, Ontario
 cs-cdn@panduit.com
 Phone: 800.777.3300

PANDUIT EUROPE LTD.
 London, UK
 cs-emea@panduit.com
 Phone: 44.20.8601.7200

PANDUIT SINGAPORE PTE. LTD.
 Republic of Singapore
 cs-ap@panduit.com
 Phone: 65.6305.7575

PANDUIT JAPAN
 Tokyo, Japan
 cs-japan@panduit.com
 Phone: 81.3.6863.6000

PANDUIT LATIN AMERICA
 Guadalajara, Mexico
 cs-la@panduit.com
 Phone: 52.33.3777.6000

PANDUIT AUSTRALIA PTY. LTD.
 Victoria, Australia
 cs-aus@panduit.com
 Phone: 61.3.9794.9020

For a copy of Panduit product warranties, log on to www.panduit.com/warranty

For more information

Visit us at www.panduit.com

Contact Customer Service by email: cs@panduit.com
 or by phone: 800-777-3300



©2015 Panduit Corp.
 ALL RIGHTS RESERVED.
COG10--WW-ENG
 11/2015