

THIS COPY IS PROVIDED ON A RESTRICTED BASIS AND IS NOT TO BE USED IN ANY WAY DETRIMENTAL TO THE INTERESTS OF PANDUIT CORP.

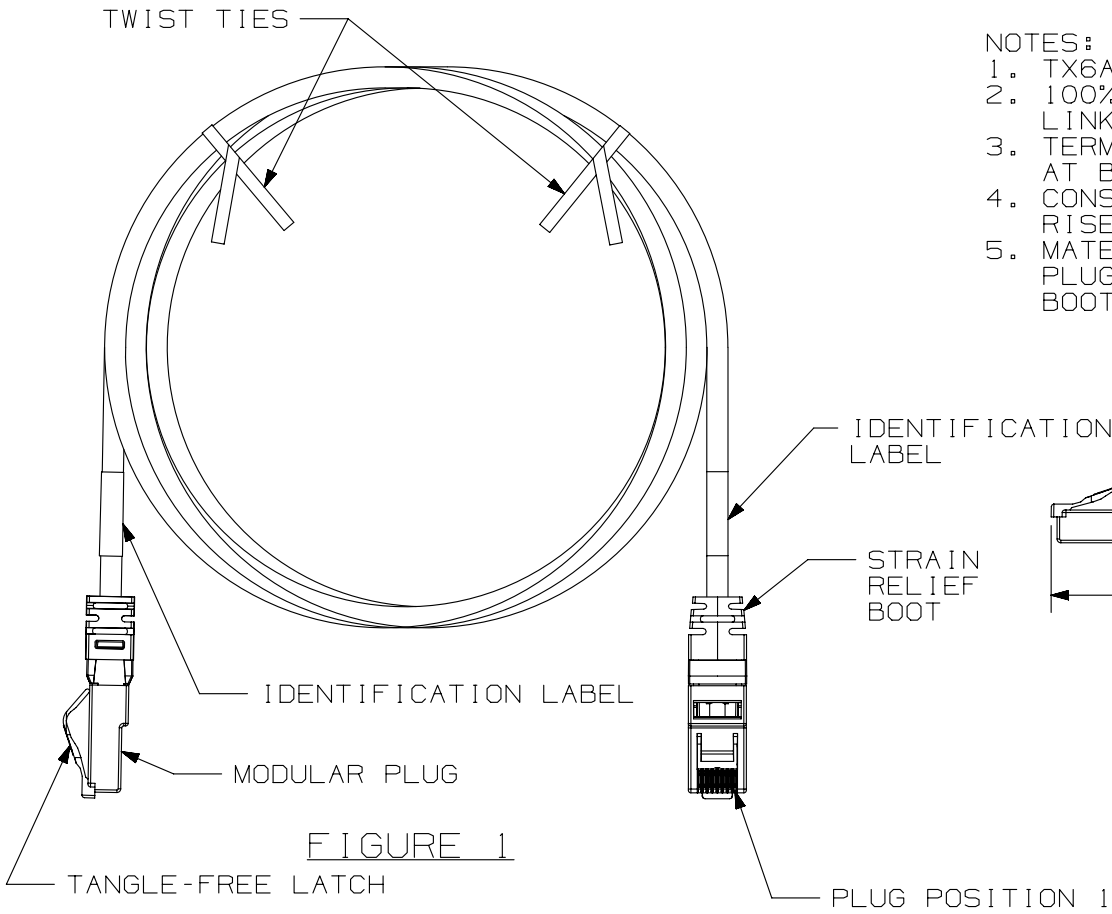


FIGURE 1

NOTES:

1. TX6A 10GIG UTP PLUG-TO-PLUG ZONE CORD
2. 100% PERFORMANCE TESTED TO CATEGORY 6A PERMANENT LINK LIMITS
3. TERMINATED WITH (8 POSITION) RJ45 MODULAR PLUGS AT BOTH ENDS PER T568B
4. CONSTRUCTED WITH 23AWG SOLID CATEGORY 6A RISER, PLENUM, OR LOW SMOKE ZERO HALOGEN CABLE
5. MATERIALS:  
 PLUG: POLYCARBONATE  
 BOOT: CLEAR PVC

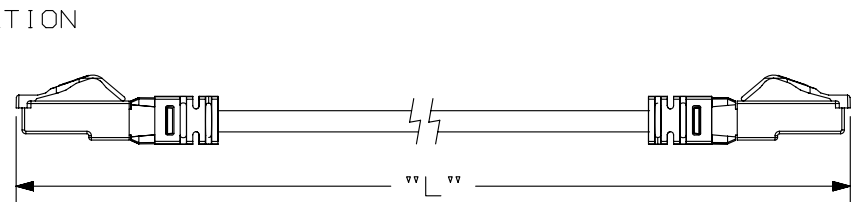


FIGURE 2

SEE SHEET 2 FOR ZONE CORD LENGTHS AND PART NUMBERS

T568B WIRING SCHEME

PLUG POSITION:	CABLE WIRE:
1	WHITE/ORANGE
2	ORANGE
3	WHITE/GREEN
4	BLUE
5	WHITE/BLUE
6	GREEN
7	WHITE/BROWN
8	BROWN

PART NUMBER <b>UZP* SERIES</b>		PRODUCT SPEC/PKG SPEC N/A	
I.I. NUMBER N/A		WORK INSTRUCTION N/A	
TITLE <b>TX6A 10GIG UTP PLUG-TO-PLUG ZONE CORD</b>			
CUSTOMER DRAWING			
ITEM REVISION NAME <b>10M185BC/00</b>		<b>PANDUIT</b>	
DATASET FILE NAME <b>10M185BC_DC02/00B</b>			
UNLESS OTHERWISE SPECIFIED, DIMENSIONAL TOLERANCES ARE: IN (mm)		MATERIAL: <b>SEE NOTES</b>	
.x ± .1 [ 2.54 ]      .xxx ± .005 [ .127 ]		DRAWING NUMBER: <b>10M185BC-02</b>	
.xx ± .01 [ .25 ]      ANGLES ± 5 °			
		THIRD ANGLE PROJECTION	
DRAWN BY <b>BJN</b>	DATE <b>8-4-10</b>	CHK <b>MKY</b>	SCALE <b>NONE</b>
REV		SHT 1 OF 2	
DATE		SIZE <b>A</b>	

REV	DATE	BY	CHK	APR	DESCRIPTION	ECN
1	12-17-13	BJN	EJH	EJH	UPDATED	10M185BC-02
R	6-4-10	BJN	MKY	JPMC	RELEASED TO PRODUCTION	10M185BC-02

D10100DA/14

THIS COPY IS PROVIDED ON A RESTRICTED BASIS AND IS NOT TO BE USED IN ANY WAY DETRIMENTAL TO THE INTERESTS OF PANDUIT CORP.

10GIG UTP PLUG-TO-PLUG ZONE CORDS

PART NUMBERS		PART NUMBERS	
UZPPBU** (PLENUM)		UZPLWH**M (LSZH)	
UZPRBU** (RISER)			
MIN. CABLE LENGTH	MIN. CABLE LENGTH		
10 FT (120")	4 METERS (158")		
15 FT (180")	5 METERS (197")		
20 FT (240")	6 METERS (237")		
25 FT (300")	7 METERS (276")		
30 FT (360")	8 METERS (315")		
35 FT (420")	9 METERS (355")		
40 FT (480")	10 METERS (394")		
45 FT (540")	11 METERS (434")		
50 FT (600")	12 METERS (473")		
55 FT (660")	13 METERS (512")		
60 FT (720")	14 METERS (552")		
65 FT (780")	15 METERS (591")		
70 FT (840")	16 METERS (630")		
75 FT (900")	18 METERS (709")		
80 FT (960")	20 METERS (788")		
85 FT (1020")	22 METERS (867")		
90 FT (1080")	24 METERS (945")		
95 FT (1140")	26 METERS (1024")		
100 FT (1200")	28 METERS (1103")		
110 FT (1320")	30 METERS (1182")		
120 FT (1440")	32 METERS (1260")		
130 FT (1560")	34 METERS (1339")		
140 FT (1680")	36 METERS (1418")		
150 FT (1800")	38 METERS (1497")		
	40 METERS (1575")		
	42 METERS (1654")		
	44 METERS (1733")		
	46 METERS (1812")		
	48 METERS (1890")		
	50 METERS (1969")		

PLENUM AND RISER OFFERED WITH BLUE CABLE. (FEET ONLY)  
 LSZH OFFERED WITH WHITE CABLE. (METERS ONLY)

STRAIN RELIEF BOOTS AVAILABLE IN CLEAR ONLY.

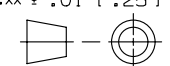
\*\*=LENGTH (SEE FIGURE 2, SHEET 1)

B

B

A

A

PART NUMBER <b>UZP* SERIES</b>		PRODUCT SPEC/PKG SPEC N/A	
I.I. NUMBER N/A		WORK INSTRUCTION N/A	
TITLE <b>TX6A 10GIG UTP PLUG-TO-PLUG ZONE CORD</b>			
CUSTOMER DRAWING			
ITEM REVISION NAME <b>10M185BC/00</b>		<b>PANDUIT</b>	
DATASET FILE NAME <b>10M185BC_DC02/00B</b>			
UNLESS OTHERWISE SPECIFIED, DIMENSIONAL TOLERANCES ARE: IN [mm]		MATERIAL: <b>SEE NOTES</b>	
.x ± .1 [ 2.54 ]      .xxx ± .005 [ .127 ] .xx ± .01 [ .25 ]      ANGLES ± 5 °		DRAWING NUMBER: <b>10M185BC-02</b>	
 THIRD ANGLE PROJECTION			
DRAWN BY <b>BJN</b>	DATE <b>8-4-10</b>	CHK <b>MKY</b>	SCALE <b>NONE</b>
REV		SHT 2 OF 2	
DATE		SIZE <b>A</b>	

REV	DATE	BY	CHK	APR	DESCRIPTION	ECN
1	12-17-13	BJN	EJH	EJH	SEE SHEET 1 FOR REVISIONS	10M185BC-02
R	8-4-10	BJN	MKY	JPMC	SEE SHEET 1 FOR REVISIONS	10M185BC-02

D10100DA/14