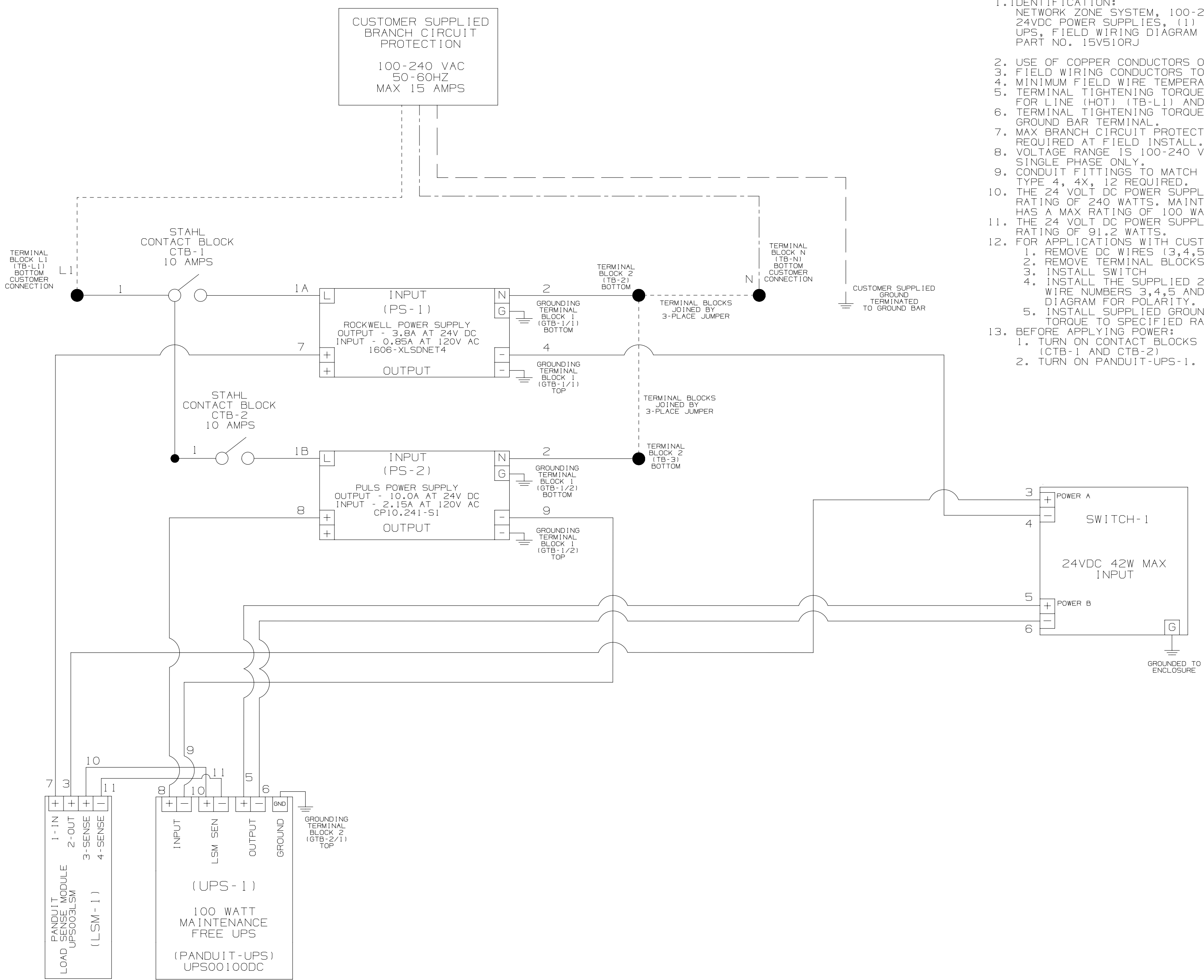


- IDENTIFICATION:
NETWORK ZONE SYSTEM, 100-240VAC INPUT, REDUNDANT 24VDC POWER SUPPLIES, (1) 100W MAINTENANCE FREE UPS, FIELD WIRING DIAGRAM PART NO. 15V510RJ
- USE OF COPPER CONDUCTORS ONLY
- FIELD WIRING CONDUCTORS TO BE 14 GA
- MINIMUM FIELD WIRE TEMPERATURE RATING 60°C
- TERMINAL TIGHTENING TORQUE OF 5.0 TO 5.6 IN-LBS FOR LINE (HOT) (TB-L1) AND NEUTRAL (TB-N) CONNECTIONS.
- TERMINAL TIGHTENING TORQUE OF 35 IN-LBS FOR GROUND BAR TERMINAL.
- MAX BRANCH CIRCUIT PROTECTION RATING OF 15 AMPS REQUIRED AT FIELD INSTALL.
- VOLTAGE RANGE IS 100-240 VAC, 50-60 HZ SINGLE PHASE ONLY.
- CONDUIT FITTINGS TO MATCH ENCLOSURE RATINGS TYPE 4, 4X, 12 REQUIRED.
- THE 24 VOLT DC POWER SUPPLY (PS-2) HAS A MAX RATING OF 240 WATTS. MAINTENANCE FREE UPS HAS A MAX RATING OF 100 WATTS.
- THE 24 VOLT DC POWER SUPPLY (PS-1) HAS A MAX RATING OF 91.2 WATTS.
- FOR APPLICATIONS WITH CUSTOMER SUPPLIED SWITCH:
 - REMOVE DC WIRES (3,4,5, AND 6) FROM TERMINAL BLOCKS
 - REMOVE TERMINAL BLOCKS
 - INSTALL SWITCH
 - INSTALL THE SUPPLIED 24 VOLT WIRES FOR THE SWITCH, WIRE NUMBERS 3,4,5 AND 6. CHECK WIRE DIAGRAM FOR POLARITY. TORQUE TO SPECIFIED RATINGS.
 - INSTALL SUPPLIED GROUND WIRE TO SWITCH, TORQUE TO SPECIFIED RATINGS.
- BEFORE APPLYING POWER:
 - TURN ON CONTACT BLOCKS 1 AND 2. (CTB-1 AND CTB-2)
 - TURN ON PANDUIT-UPS-1. (UPS-1)



							TITLE NETWORK ZONE SYSTEM, 100-240VAC INPUT, REDUNDANT 24VDC POWER SUPPLIES, (1) 100W MAINTENANCE FREE UPS FIELD WIRING DIAGRAM			
							ITEM REVISION NAME 15V510RJ/01.PRT			
							DATASET FILE NAME 15V510RJ_DC/01A.PRT			
							UNLESS OTHERWISE SPECIFIED, DIMENSIONAL TOLERANCES ARE: INCHES: ±0.03, ±0.018, ±0.007 METRIC - MILLIMETER: ±0.8, ±0.46, ±0.18			
							MATERIAL/COLOR: N/A			
							DRAWING NUMBER: 15V510RJ			
01A 2/1/18 RHG NWW TIMH RELEASED TO CUSTOMER							ECN-1N1-0001/02			
REV DATE BY CHK APR DESCRIPTION							THIRD ANGLE PROJECTION			
							DRAWN BY: JBO DATE: 1-9-17 CHK: TIMH SCALE: N/A			
							SHT 1 OF 1			
							SIZE: C			