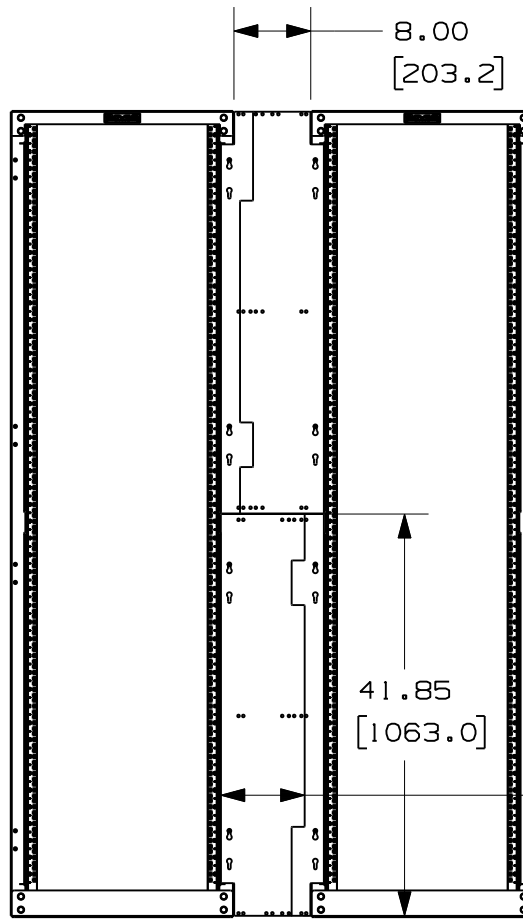
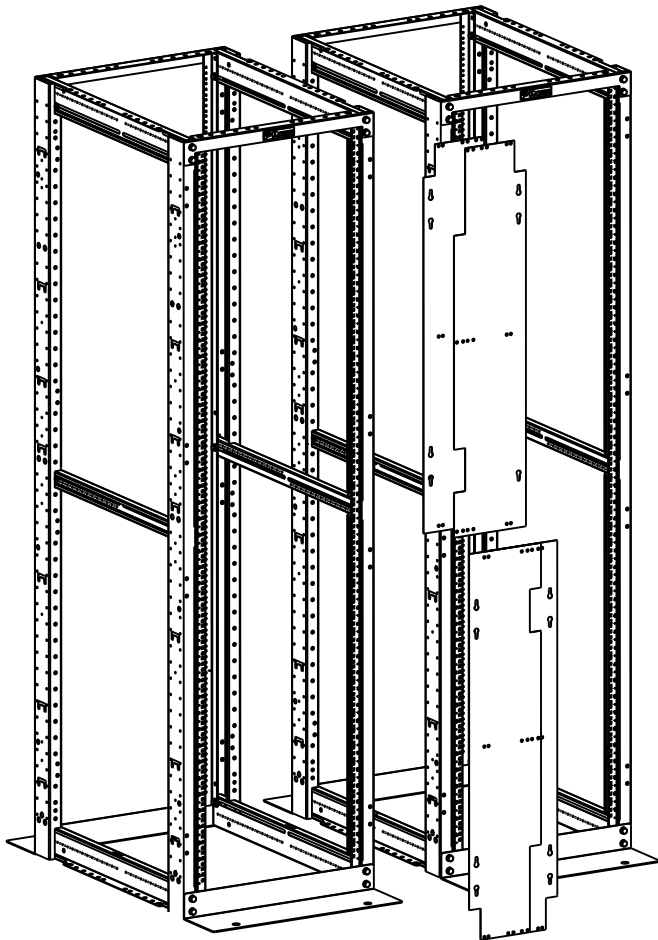


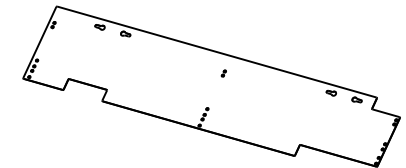
THIS COPY IS PROVIDED ON A RESTRICTED BASIS AND IS NOT TO BE USED IN ANY WAY DETRIMENTAL TO THE INTERESTS OF PANDUIT CORP.



PANDUIT PART NO.	WEIGHT
R4PFP	18.0 LBS/EACH 8.2 KGS/EACH

NOTES:

- SEE CATALOG FOR COMPLETE LIST OF PARTS APPLICABLE FOR USE WITH THIS PART.
- VERTICAL FILLER PANELS ADJUST TO ACCOMODATE WIDTH SPACING BETWEEN RACKS OF 6", 6.75", 8", 10", AND 12".
- R4PFP IS USED ON 7 FOOT TALL, 4-POST RACKS.
- DIMENSIONS IN PARENTHESES ARE METRIC.
- PART INCLUDES:
 - (4) VERTICAL QUARTER PANELS
 - (2) PACKS OF #12-24 SCREWS (4 PER PACK)
 - (8) 1/4-20 NUTS
 - (12) 1/4-20 X 3/8 SCREWS
 - (4) 1/4-20 TP WELD NUTS
 - (8) #12 SERRATED LOCKWASHERS



ONE PANEL SHOWN SEPARATELY

FILLER PANELS SHOWN WITH RACKS SPACED 8" APART

MODEL FILENAME	V10679WD/01
CAD FILENAME/LAYERS	V10679WE_DC/02B

PANDUIT CORP. TINLEY PARK, ILLINOIS

R4PFP - VERTICAL FILLER PANEL
CUSTOMER DRAWING

UNLESS OTHERWISE SPECIFIED, DIMENSIONAL TOLERANCES ARE:
UNLESS OTHERWISE SPECIFIED, ALL DIMENSIONS ARE GIVEN IN INCHES, THIRD ANGLE PROJECTION.

REV	DATE	BY	CHK	DESCRIPTION	ECN	R	CUST	SUP	OTH
02B	7/7/10	BAME		UPDATED PART DESCRIPTION	V10679WE-DC				
01A	3/25/10	PM	DPN	RELEASED TO PRODUCTION	V10679WE-DC		CMK		

DRAWN BY PM	MAT'L: SEE NOTES	SCALE NONE
DATE 3/25/10		DRAWING NO. V10679WE-DC
CHK'D DPN		DWG A SIZE