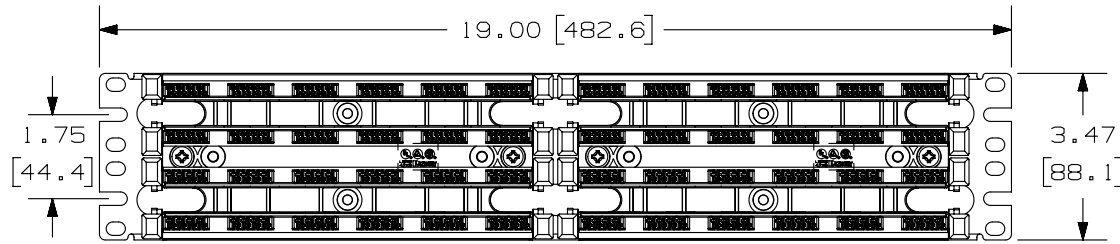


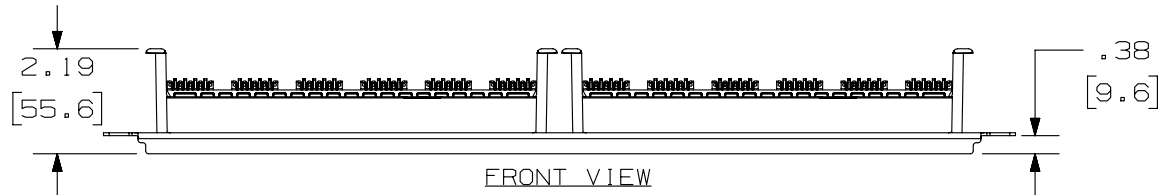
2

1

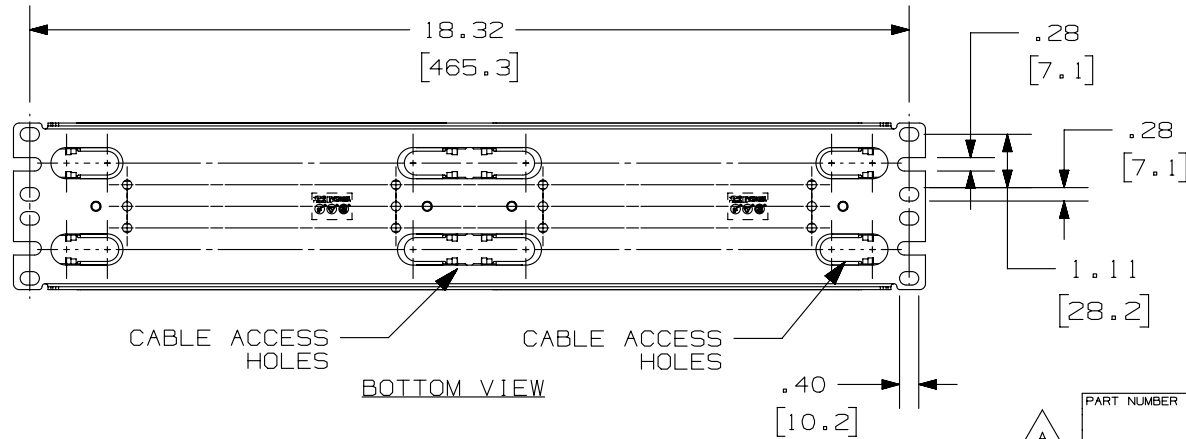
THIS COPY IS PROVIDED ON A RESTRICTED BASIS AND IS NOT TO BE USED IN ANY WAY DETRIMENTAL TO THE INTERESTS OF PANDUIT CORP.



TOP VIEW



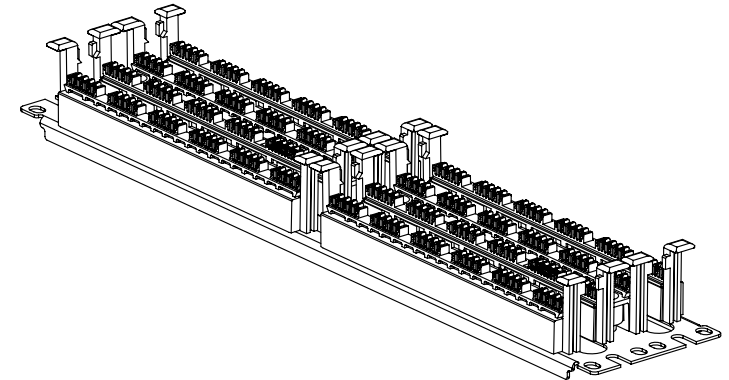
FRONT VIEW



BOTTOM VIEW

NOTES:

1. SEE CURRENT CATALOG FOR ADDITIONAL PART NUMBER SUFFIXES TO INDICATE PACKAGE QUANTITY.
2. STAMPING ASSEMBLY IS DESIGNED FOR RACK MOUNT APPLICATIONS.
3. GP6 PLUS BASES ARE ASSEMBLED TO BRACKETS WITH 4 SUPPLIED SCREWS. (4) #12 MOUNTING SCREWS AND (4) METRIC M6x1x15MM SCREWS ARE ALSO PROVIDED.
5. DIMENSIONS IN PARENTHESIS ARE IN METRIC.



PART NUMBER

GPB484R2Y

TITLE

STANDARD DENSITY GP6 PLUS 2RU 19" RACK MOUNT PANEL

CUSTOMER DRAWING

ITEM REVISION NAME

M02479KB/00

DATASET FILE NAME

M02479KB_DC263/00B

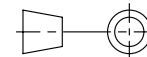
UNLESS OTHERWISE SPECIFIED,
DIMENSIONAL TOLERANCES ARE: IN [mm]

.X ±

.XXX ± .010 [.3]

.XX ± .03 [.8]

ANGLES ±

THIRD ANGLE
PROJECTION

MATERIAL:

BASES: POLYCARBONATE
BRACKET: 16 GAUGE C.R.S.

DRAWING NUMBER:

02479-263

DRAWN BY

NER

DATE

3-20-06

CHK

WJC

SCALE

NONE

SHT 1 OF 1

SIZE

A

REV	DATE	BY	CHK	APR	DESCRIPTION	ECN
1	6-04-14	MDJR	REFR	MMR	B. REMOVED NOTE 4. A. UPDATED TITLE BLOCK.	02479-263
R	3-20-06	NER	WJC	RMD	RELEASED TO PRODUCTION	02479-263

2

1

D10100DA/14