

THIS COPY IS PROVIDED ON A RESTRICTED BASIS AND IS NOT TO BE USED IN ANY WAY DETRIMENTAL TO THE INTERESTS OF PANDUIT CORP.

PANDUIT P/N	WEIGHT
P24E##M-XXYZ	SEE SHEET 2

SPECIFICATION:

- STANDARD
 - UNIT TYPE: MONITORED SWITCHED
 - ORIENTATION: VERTICAL, 0U FULL
 - OUTLET QTY & TYPE: SEE SHEET 2 FOR CONFIGURATIONS
 - INPUT VOLTAGE: 200-240/346-415VAC
 - INPUT CURRENT: 30A (24A DERATED)
 - BREAKER QTY & TYPE: (6) 20A, SINGLE POLE
 - INPUT PHASE: THREE-PHASE WYE
 - RATED POWER: 17.3 kVA
 - INPUT PLUG: SEE SHEET 2 FOR CONFIGURATIONS
 - INPUT POWER CORD: SEE SHEET 2 FOR PART NUMBER TABLE

REGULATORY STANDARD: RoHS COMPLIANT

- ADDITIONAL:
 - CIRCUIT BREAKERS RATED AT 10KAIC

- ACCESSORIES:
 - (1) QUICK-START GUIDE

NOTES:

- PRIMARY DIMENSIONS ARE IN MILLIMETERS. SECONDARY DIMENSIONS ARE IN [INCHES]
- INSTALLATION SHALL COMPLY WITH ALL APPLICABLE NATIONAL, STATE, AND LOCAL CODES
- VISIT OUR ON-LINE CATALOG AT WWW.PANDUIT.COM FOR A CURRENT LIST OF PRODUCTS APPLICABLE FOR USE WITH THIS PRODUCT
- FOR FULL PRODUCT FUNCTIONALITY REFER TO USER MANUAL
- DRAWING VIEWS SHOW THE INPUT CORD IN THE "TOP END FED" CONFIGURATION

IDENTIFICATION

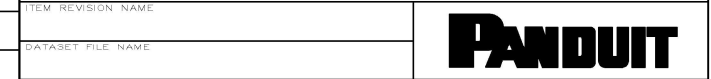
FOR FINISHED GOOD PART NUMBER & DESCRIPTION TABLE SEE SHEET 2 CONFIGURABLE PART NUMBERS: **P24E##M - XXYZ**

XX: FINISHED GOOD COLOR BL=BLACK YL=YELLOW RD=RED BU=BLUE WH=WHITE GN=GREEN	Y: INPUT FEED TYPE 1=TOP-END FED 2=BOTTOM-END FED	Z: INPUT CORD LENGTH A=1 METER B=2 METER C=3 METER
--	---	---

FOUR CHARACTER SUFFIX FOR ALTERNATE PRODUCT CONFIGURATIONS

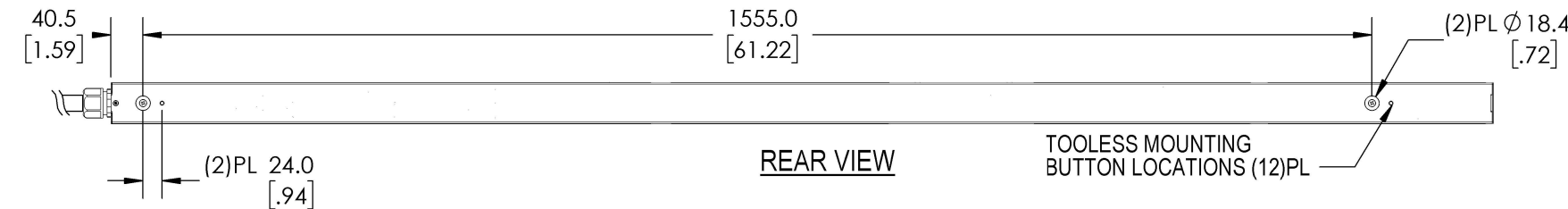
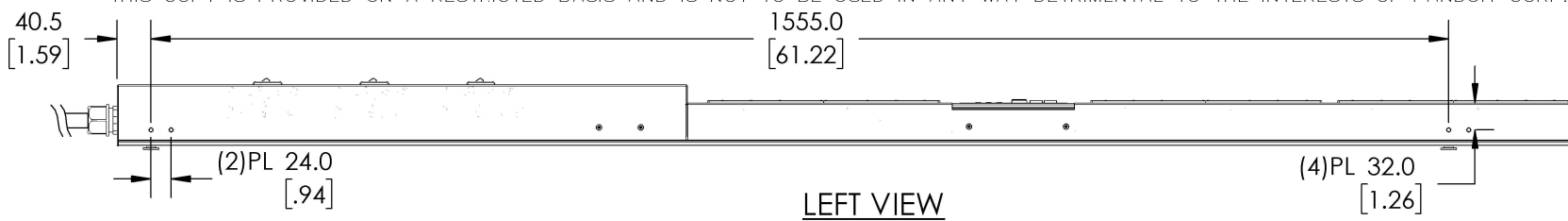
WE ASK THAT YOU CHECK FULLY THE DIMENSIONS, NOTES, AND SIGNTHE CLIENT SIGNATURE BOX. THE JOB WILL NOT PROGRESS WITHOUT SIGNED APPROVAL. PLEASE DO NOT DELAY IN RETURNING PROOF AS IT WILL AFFECT DELIVERY.	SIGN
	DATE
	PRINT

TITLE	INTELLIGENT SERIES PDU P24E##M-XXYZ CUSTOMER DRAWING
ITEM REVISION NAME	
DATASET FILE NAME	

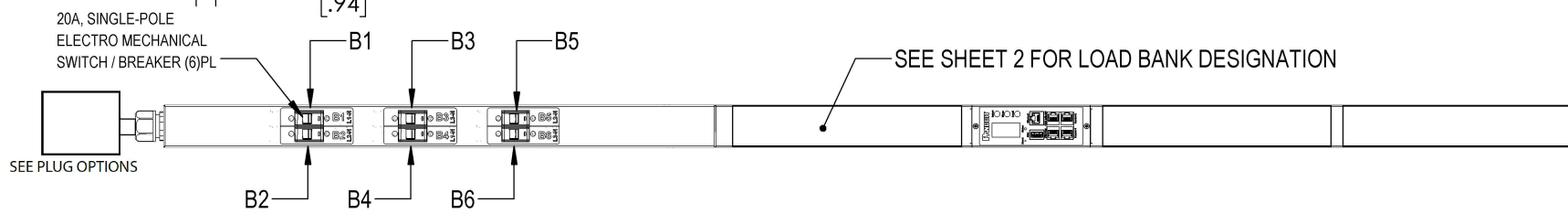
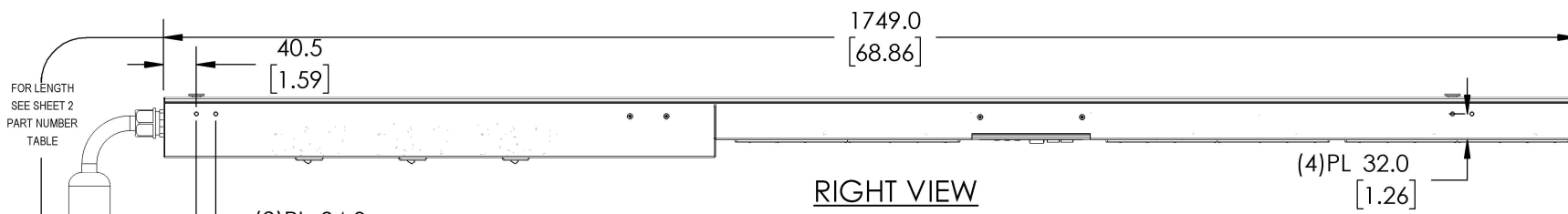


UNLESS OTHERWISE SPECIFIED, DIMENSIONAL TOLERANCES ARE: mm [IN]	MATERIAL:
Tolerance (mm)	DRAWING NUMBER: P24E_DC
0<L<50 ±0.5	
50<L<250 ±1.0	
250<L<500 ±1.5	
500<L<1000 ±2.5	
1000<L<5000 ±4.0	

BY: WAC	DATE: 03/14/19	CHK: -	SCALE: NTS	SHEET 1 OF 2	SIZE: B
---------	----------------	--------	------------	--------------	---------



TOOLESS MOUNTING BUTTON LOCATIONS (12)PL



PLUG/ RECEPTACLE BLOCK

	IEC 60309, 4P 5W, 6H IP67 (WATERTIGHT) 30A, 346-415V MAX RATED INPUT 24A DERATED		IEC 60320/C19 16A, 250V MAX RATED OUTPUT
	IEC 60309, 4P 5W, 6H IP44 (SPASHPROOF) 30A, 346-415V MAX RATED INPUT 24A DERATED		IEC 60320/C13 10A, 250V MAX RATED OUTPUT
	NEMA L22-30P, 4P 5W 30A, 277-480V MAX RATED INPUT 24A DERATED		

01A	3/19/2019	WAC	DACU	JAWI	RELEASED TO PRODUCTION	P24E
REV	DATE	BY	CHK	APR	DESCRIPTION	ECN

B

B

A

A

D10100DB/17

2

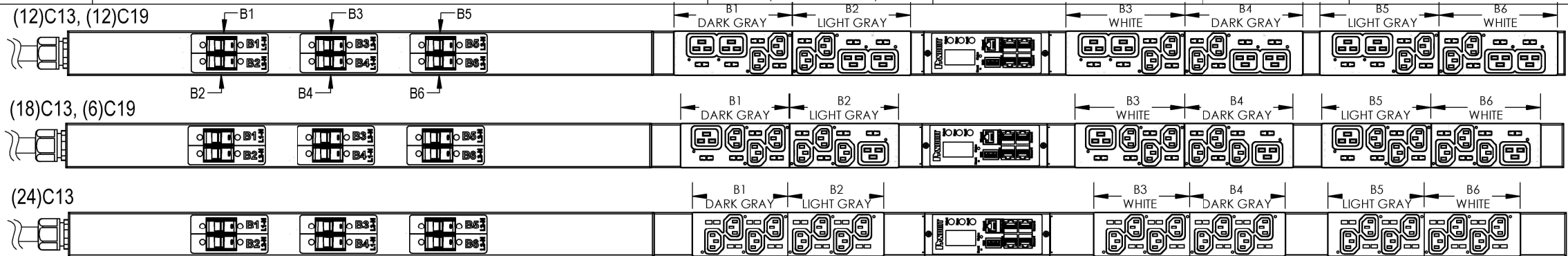
1

2

1

THIS COPY IS PROVIDED ON A RESTRICTED BASIS AND IS NOT TO BE USED IN ANY WAY DETRIMENTAL TO THE INTERESTS OF PANDUIT CORP.

FINISHED GOOD PART NUMBER	FINISHED GOOD DESCRIPTION	INPUT PLUG CONFIGURATION	RECEPTACLE CONFIGURATION	COLOR	INPUT CORD LENGTH	WEIGHT
P24E06M	VERTICAL, (12)C13, (12)C19, MONITORED SWITCHED, 200-240/346-415V/ 30A/3 PHASE WYE, TOP-END FED, 3 METER INPUT CORD, BLACK	L22-30P 30A 4P, 5W	(12) C13, (12) C19	BLACK (RAL 9005)	3M(+254MM/-127MM) 10' [+10"/-5"]	12.5kg
P24E05M	VERTICAL, (12)C13, (12)C19, MONITORED SWITCHED, 200-240/346-415V/ 30A/3 PHASE WYE, TOP-END FED, 3 METER INPUT CORD, BLACK	IEC60309 30A 4P, 5W, IP67 (WATERTIGHT)	(12) C13, (12) C19	BLACK (RAL 9005)	3M(+254MM/-127MM) 10' [+10"/-5"]	12.5kg
P24E09M	VERTICAL, (12)C13, (12)C19, MONITORED SWITCHED, 200-240/346-415V/ 30A/3 PHASE WYE, TOP-END FED, 3 METER INPUT CORD, BLACK	IEC60309 30A 4P, 5W, IP44 (SPASHPROOF)	(12) C13, (12) C19	BLACK (RAL 9005)	3M(+254MM/-127MM) 10' [+10"/-5"]	12.5kg
P24E12M	VERTICAL, (18) C13, (6)C19 MONITORED SWITCHED, 200-240/346-415V/ 30A/3 PHASE WYE, TOP-END FED, 3 METER INPUT CORD, BLACK	L22-30P 30A 4P, 5W	(18) C13, (6) C19	BLACK (RAL 9005)	3M(+254MM/-127MM) 10' [+10"/-5"]	12.5kg
P24E07M	VERTICAL, (18) C13, (6)C19 MONITORED SWITCHED, 200-240/346-415V/ 30A/3 PHASE WYE, TOP-END FED, 3 METER INPUT CORD, BLACK	IEC60309 30A 4P, 5W, IP67 (WATERTIGHT)	(18) C13, (6) C19	BLACK (RAL 9005)	3M(+254MM/-127MM) 10' [+10"/-5"]	12.5kg
P24E10M	VERTICAL, (18) C13, (6)C19 MONITORED SWITCHED, 200-240/346-415V/ 30A/3 PHASE WYE, TOP-END FED, 3 METER INPUT CORD, BLACK	IEC60309 30A 4P, 5W, IP44 (SPASHPROOF)	(18) C13, (6) C19	BLACK (RAL 9005)	3M(+254MM/-127MM) 10' [+10"/-5"]	12.5kg
P24E13M	VERTICAL, (24) C13, MONITORED SWITCHED, 200-240/346-415V/ 30A/3 PHASE WYE, TOP-END FED, 3 METER INPUT CORD, BLACK	L22-30P 30A 4P, 5W	(24) C13	BLACK (RAL 9005)	3M(+254MM/-127MM) 10' [+10"/-5"]	12.5kg
P24E08M	VERTICAL, (24) C13, MONITORED SWITCHED, 200-240/346-415V/ 30A/3 PHASE WYE, TOP-END FED, 3 METER INPUT CORD, BLACK	IEC60309 30A 4P, 5W, IP67 (WATERTIGHT)	(24) C13	BLACK (RAL 9005)	3M(+254MM/-127MM) 10' [+10"/-5"]	12.5kg
P24E11M	VERTICAL, (24) C13, MONITORED SWITCHED, 200-240/346-415V/ 30A/3 PHASE WYE, TOP-END FED, 3 METER INPUT CORD, BLACK	IEC60309 30A 4P, 5W, IP44 (SPASHPROOF)	(24) C13	BLACK (RAL 9005)	3M(+254MM/-127MM) 10' [+10"/-5"]	12.5kg



WE ASK THAT YOU CHECK FULLY THE DIMENSIONS, NOTES, AND SIGNTHE CLIENT SIGNATURE BOX. THE JOB WILL NOT PROGRESS WITHOUT SIGNED APPROVAL. PLEASE DO NOT DELAY IN RETURNING PROOF AS IT WILL AFFECT DELIVERY.

SIGN _____
DATE _____
PRINT _____

TITLE
INTELLIGENT SERIES PDU
P24E##M-XXYZ
CUSTOMER DRAWING

ITEM REVISION NAME _____
DATASET FILE NAME _____

UNLESS OTHERWISE SPECIFIED, DIMENSIONAL TOLERANCES ARE: mm [IN]

Tolerance (mm)
0<L<50 ±0.5
50<L<250 ±1.0
250<L<500 ±1.5
500<L<1000 ±2.5
1000<L<2000 ±4.0

THIRD ANGLE PROJECTION

MATERIAL: _____
DRAWING NUMBER: **P24E_DC**

BY WAC DATE 03/14/2019 CHK - SCALE NTS SHEET 2 OF 2 SIZE B

REV	DATE	BY	CHK	APR	DESCRIPTION	ECN
01A	3/19/2019	WAC	DACU	JAWI	RELEASED TO PRODUCTION	P24E

D:01.00DB/17