
More Meaningful Connections



Network Infrastructure Security Solution

Network Infrastructure Security Solution

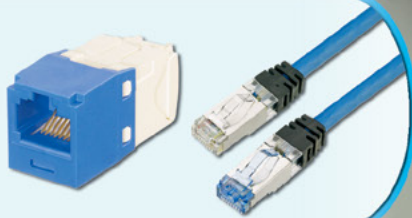
Technology is a critical asset for driving improvements in operational and financial efficiencies, but it can become risky. Within Enterprise, data center, and industrial automation applications, broader access to networks, files, and websites increases threats, posing more significant security risks. Security considerations, while paramount, should not become a barrier to service improvements and IT investments.

Panduit is a world-class developer and provider of leading-edge solutions that help optimize the physical infrastructure to mitigate risk and offers Network Infrastructure Security Solutions that enhance information security measures at the physical layer by deterring unauthorized network access and physical system changes.



Keyed Copper Connectivity

Page 3



Water/Tamper Resistant Faceplate

Page 3



Network Security Devices

Page 4



Zone Enclosures

Page 5



Keyed Connectivity

Keyed copper and fiber cabling systems allow the design of secure, modular, end-to-end connectivity for communication and computing elements from the data center to the workstation. The keyed functionality increases network security integrity by providing positive and negative keying features that distinguish network connections mechanically. Up to multiple color-coded keys visually distinguish connections to prevent unintentional connection to network infrastructure for increased security, allowing multiple networks to be managed without the risk of interchanging access and limiting network access to unauthorized users.

Mini-Com® Keyed Copper Jack Modules

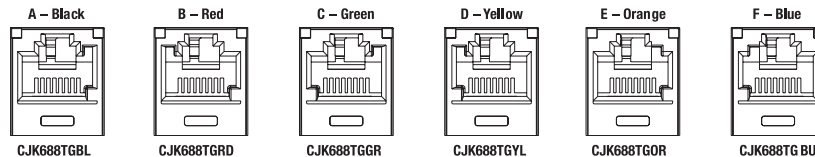
Keyed jack type is indicated by jack color. Select a patch cord (below) of the same color as the jack to match the keyed configuration.



CJK6X88TGBU

Part Number	Description	Keyed Type and Color*
UTP Keyed Jack Modules		
CJK6X88TGBU	Category 6A, RJ45, 10 Gb/s, 8-position, 8-wire universal UTP keyed jack module	Blue*
CJK688TGBU	Category 6, RJ45, 8-position, 8-wire universal UTP keyed jack module	

*For standard jack module colors and keyed configurations other than Blue, replace BU suffix with BL (Black), RD (Red), YL (Yellow), GR (Green), or OR (Orange). Each color represents a different keyed configuration.



CJK688TGBL

CJK688TGRD

CJK688TGGR

CJK688TGYL

CJK688TGOR

CJK688TGBU

Keyed Copper Patch Cords

Keyed patch cord type is indicated by patch cord color. Select a jack (above) of the same color as the patch cord to match the keyed configuration.



Keyed UTP Copper Patch Cords

Part Number	Description	Length^	Keyed Type and Color*
UTP Keyed Patch Cords			
UTPK6A3BU	Category 6A, 10 Gb/s UTP stranded CM patch cord with TX6™ PLUS Keyed Modular Plug on one end and TX6™ PLUS Non-Keyed Modular Plug on the other end	3 feet	Blue*
UTPK6A1MBU	Category 6A, 10 Gb/s UTP stranded CM patch cord with TX6™ PLUS Non-Keyed Modular Plug on one end and TX6™ PLUS Keyed Modular Plug on the other end	1 meter	
UTPKSP3BU	Category 6, UTP solid CM patch cord with TX6™ PLUS Keyed Modular Plug on one end and TX6™ PLUS Non-Keyed Modular Plug on the other end	3 feet	
UTPKSP1MBU	Category 6, UTP solid CM patch cord with TX6™ PLUS Non-Keyed Modular Plug on one end and TX6™ PLUS Keyed Modular Plug on the other end	1 meter	

^For standard foot lengths (3, 5, 7, 10, 14) or standard meter lengths (1, 2, 3, 5, 7, 10) change the length designation in the part number to the desired length. For example, the part number for a Category 6A, UTP, keyed, Blue, 14-foot patch cord is UTPK6A14BU.

*For standard cable colors and keyed configurations other than Blue, replace BU suffix with BL (Black), RD (Red), YL (Yellow), GR (Green), or OR (Orange).

Water/Tamper Resistant Faceplate



CFPWR4CIG

Part Number	Description
CFPWR4CIG	Single gang water resistant faceplate made of high impact material, meets IP-56 protection, includes gaskets to prevent water damage and two types of screw options to secure hinged cover to base. Requires adhesive labeling. International Gray

Network Security Device

Network security devices reduce unauthorized access to existing network installations. These devices save time and money associated with network downtime, data security breaches, infrastructure repair, and hardware replacement due to theft. Block-out devices snap into modules and is released with the enclosed removal tool. SmartKeeper offers one master key that controls multiple block-out devices. The lock-in device is a versatile design that is compatible with most existing patch cords, faceplates, patch panels, and other IP devices.

Block-out and Lock-in Devices



Part Number	Description	Color
-------------	-------------	-------

SmartKeeper

SKRJ45RD-X	RJ45 A block-out device	Red
SKUSBA-V	USB Type A block-out device	-
SKUSBC	USB Type C block-out device	
SKMKEY	Master Key	

Block-out Devices

PSL-DCJB	Ten RJ45 jack module block-out devices and one removal tool	Red
PSL-LCAB	Ten LC duplex adapter block-out devices and one removal tool	
PSL-USBA**	Five USB Type 'A' block-out devices and one removal tool	
PSL-USBB	Ten USB Type 'B' block-out devices and one removal tool	

Lock-In Devices

PSL-DCPLE	Ten Standard RJ45 plug lock-in devices, one installation/removal tool	Red
PSL-DCPLRE	Ten recessed RJ45 plug lock-in devices, one installation/removal tool	
PSL-DCPLSE	Ten super recessed RJ45 plug lock-in devices, one installation/removal tool	
FLCCLIW-X	LC duplex lock-in clip and removal tool	White
QPPLD6-X	QuickNet™ 6-Pack Plug Pack Lock-in Device	Red
QPPLD8-X	QuickNet™ 8-Pack Plug Pack Lock-in Device	

Visit www.panduit.com for color and package options.

**Add -L to end of part number for bulk packages of 50 pieces with 5 removal tools to reduce single-use plastic

Zone Enclosures

Zone enclosures provide accessibility and flexibility to reconfigure office spaces. Each zone enclosure serves as a main distribution point for a particular zone. Keyed lockable features prevent unauthorized access.

Wall Mount Cabinets include keys to secure front and rear doors and side panels, they can be upgraded with optional combination lock that eliminates the need for a physical key.

PanZone® TrueEdge Wall Mount Enclosures



WME6BL

Part Number	RU	Height in. (mm)	Width in. (mm)	Depth in. (mm)	Load Capacity lbs. (kg)
WME3**	3	42.0 (1067)	28.5 (724)	9.5 (241)	200 (91)
WME6**	6			14.8 (376)	300 (136)
WME9**	9			20.0 (508)	400 (181)

**Colors: Black (BL) and White (WH)

Smart Rack Security Handle



ACF06

Part Number	Description
ACF05	The Smart Rack Security Handle with Dual Frequency (125 kHz and 13.56 MHz) Card Reader and integral humidity sensor operates with the Panduit iPDU and UPS. All handles feature the base tumbler (TU020X) pre-installed at the factory.
ACF06	The Smart Rack Security Handle with Dual Frequency (125 kHz and 13.56 MHz) Card Reader, integral humidity sensor, and keypad for dual authentication operates with the Panduit iPDU and UPS. All handles feature the base tumbler (TU020X) pre-installed at the factory.

PanZone® Wall Mount Cabinets



PZWMC12W

Part Number	RU	Height in. (mm)	Width in. (mm)	Depth in. (mm)	Load Capacity lbs. (kg)	Color
PZWMC12^	12	23.8 (605)	25.0 (635)	25.0 (635)	250 (113)	Black
PZWMC18^	18	34.0 (864)			300 (136)	
PZWMC26^	26	48.1 (1224)			350 (159)	
PZWMC1230^	12	23.8 (605)	30.0 (762)	250 (113)		
PZWMC1830^	18	34.0 (864)		300 (136)		
PZWMC2630^	26	48.1 (1224)		350 (159)		

Replace ^ with W for windowed doors or P for perforated doors. Visit www.panduit.com for complete offering and accessories.

Zone Cabling



PZWMC12W

See our complete line of lockable zone cabling products for open office architecture applications, telecommunication enclosures, data centers, wireless deployments, and network integration of Building Automation Systems. Utilizing a distributed network and a Zone Cabling Topology for your physical infrastructure can solve telecommunication room congestion.



PANDUIT[®]

Panduit Corp.
World Headquarters
Tinley Park, IL 60487

800.777.3300

www.panduit.com