

Power Distribution Units ES2P

Best-in-Class Single Row
Outlet Density

Optimal Form Factors

Superior Reliability



PANDUIT[™]

PDU Value Proposition



Quality & Reliability

- 3-Year Standard Warranty, get an additional 2 year warranty after online product registration.



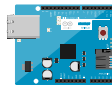
Scale As You Grow

- Daisy chain up to 16 PDUs for simplified deployment and maintenance of IP addresses



High Temp

- Built with premium components to withstand 55°C ambient at full load



Mega Ethernet

- Reduce deployment time by auto-negotiating with data center level network switches



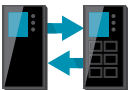
High Power Density

- Maximizing space in the minimal footprint and selected PDU technology



Plug and Play Sensors

- Digital sensors streamline setup and commissioning by communicating with the controller, supporting multiple sensors on the same bus



Hot-Swappable and Upgradable

- Hot-Swappable Controller with large LCD Display



Multi-Device WebGUI

- Enhanced User-Experience with a self adjusting Web GUI that senses the device you are on



Hardened Security

- SNMP v3, TLS, Encrypted Security; allows for Panduit PDUs to pass standard, popular industry-certified security scans. PEN Certified Security with industry best security practice high score



Multi-Color Chassis

- Different color chassis simplify power feed identification in redundant power schemes. Only available through Engineered to Order (ETO) requests

PDU Series

Basic Series

Reliable power distribution.

Monitored Input (MI) Series

Input power monitoring.

Monitored Switched (MS) Series

Input power monitoring and outlet switching.

Monitored per Outlet (MPO) Series

Input and Outlet level power monitoring.

Monitored and Switched per Outlet (MSPO) Series

Input and Outlet level power monitoring and outlet switching.

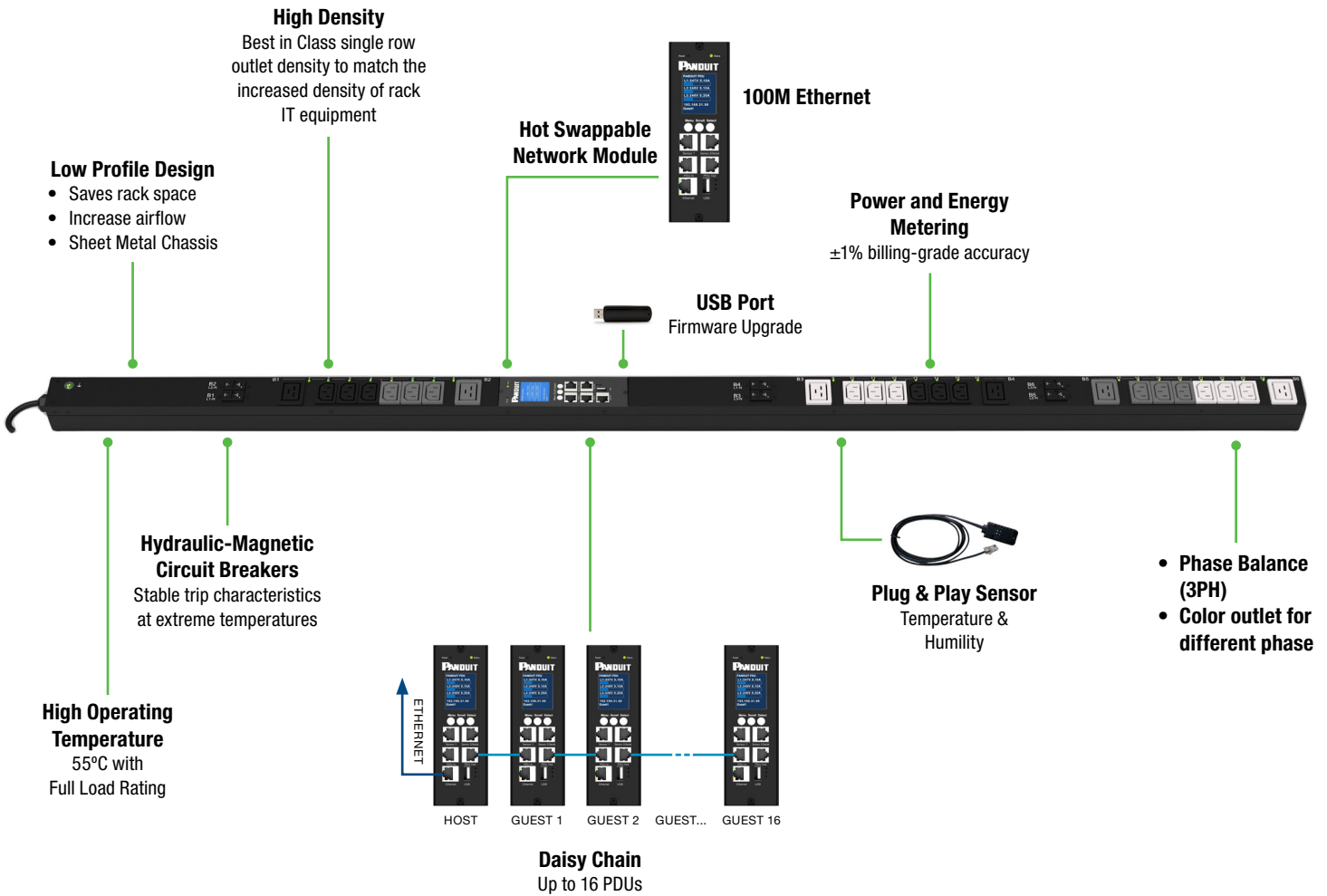
Accessories

A variety of Environmental Sensors; Security Devices; and Power Cords.

Note: All intelligent PDUs Include capabilities for environmental monitoring and rack access control.

Key Features

3-Year Standard Warranty, get an additional 2 year warranty after online product registration.



EXTENDED WARRANTY
PANDUIT

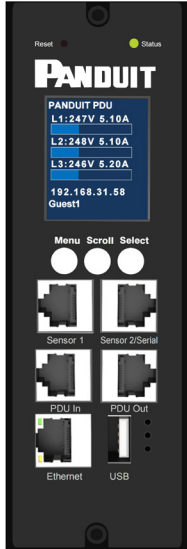
3-Year Standard Warranty with 2 additional years FREE with product registration.



Register here for extra peace of mind!

Intelligent Network Controller (Hot Swappable)

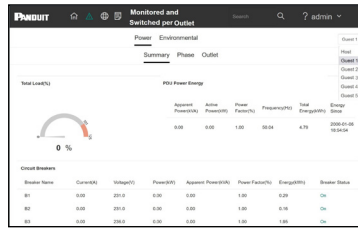
Intelligent Network Controller (Hot Swappable)



Web GUI (Multi-Device)



Login



Dashboard

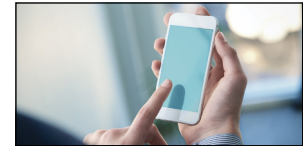
BYOD Access



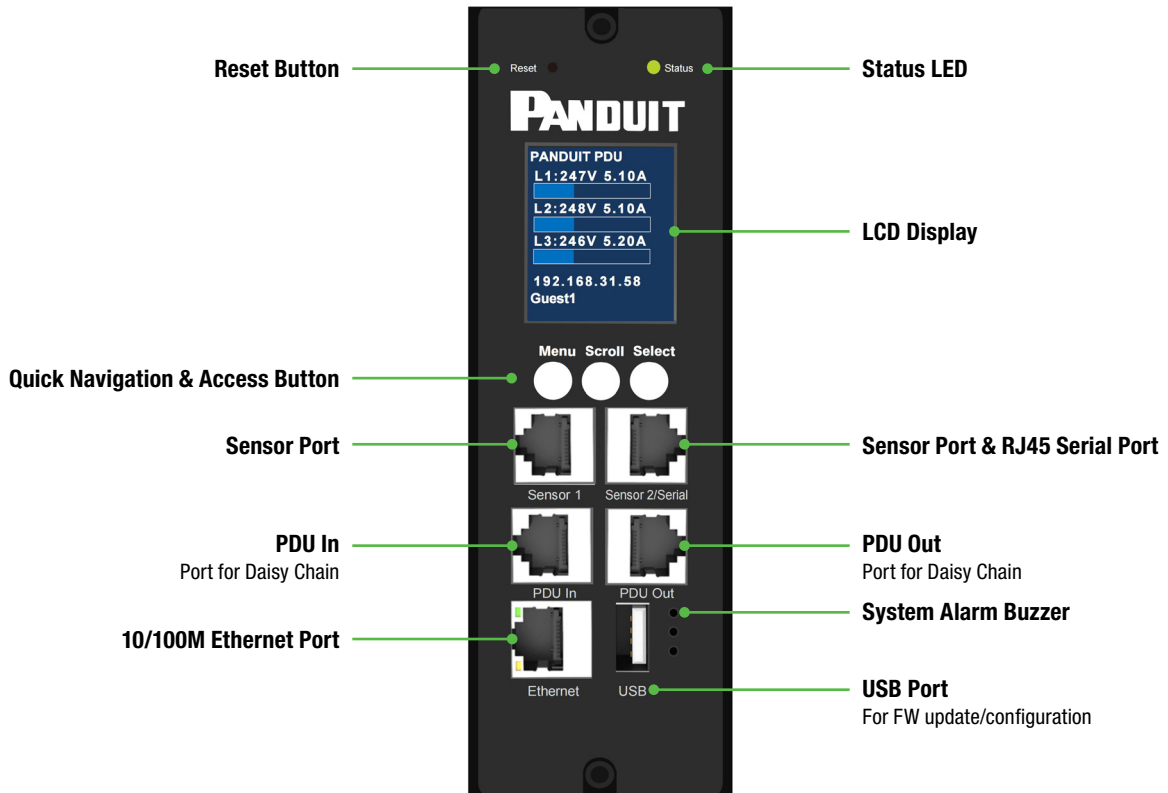
Laptop/KVM



Tablet



Smartphone

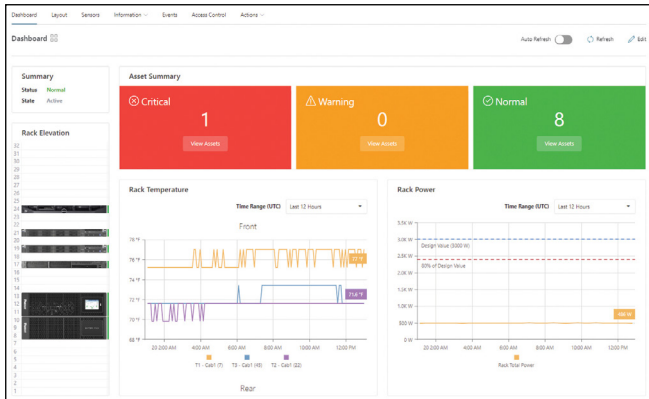


Management Software

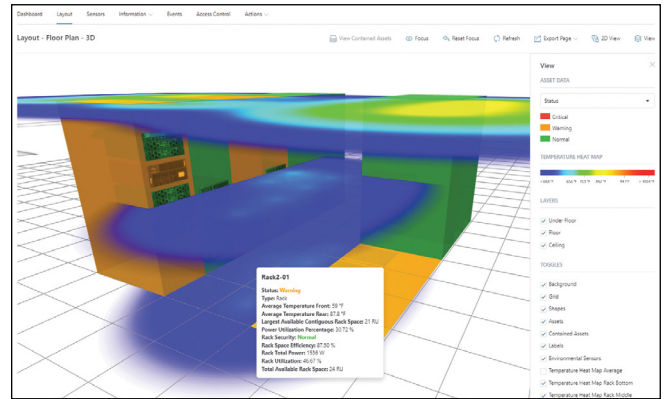


1-Year Free • Cloud Native • Quick Activation
Save Energy Cost • Reduce Downtime Risks
Increase Operation Efficiency • Optimize Infrastructure Capacity

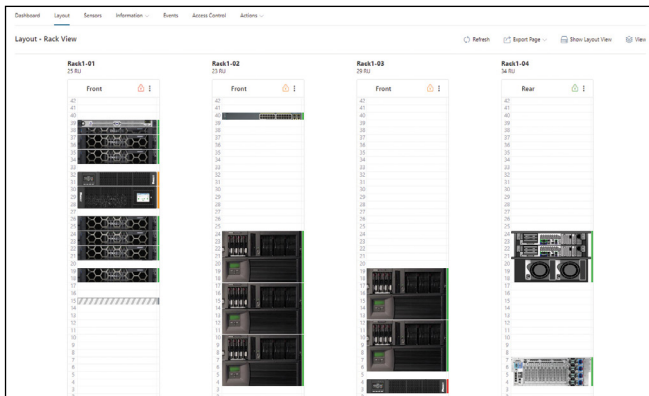
Power & Environmental Monitoring



Capacity Planning



Inventory Management



Connectivity Management



Product Features

Product Features	Intelligent				
	Basic	Monitored Input (MI)	Monitored Switched (MS)	Monitored per Outlet (MPO)	Monitored & Switched per Outlet (MSPO)
Color		Black			
Input Phase		1-ph, 3-ph			
PDU Level Watt-hour Energy Metering (kWh)		●	●	●	●
PDU Level Power Measurements (W)		●	●	●	●
Input Phase Level Power Measurements (V, A, AV, kWh, pf)		●	●	●	●
Circuit Breaker Level Current Measurement		●	●	●	●
Remote On/Off Power Control by Individual Outlet			●		●
Power-on Time Delay to Sequence IT Equipment			●		●
Automatic Sequencing to Avoid Inrush Current Overload			●		●
Outlet Level User Security with Assignable Roles and User Access				●	●
Outlet Level Watt-hour Energy Metering (kWh)				●	●
Outlet Level Power Measurements (V, A, AV, kWh, pf)				●	●
Outlet Level Information for Green Grid Level 3 PUE Calculations					
Hydraulic-magnetic Circuit Breaker Protection Capability	●	●	●	●	●
Local Display		Full color TFT LCD			
Network Port		RJ45 10/100M			
Sensor Port		2* RJ45			
USB Port		1 USB			
Sensor Supported Quantity		2 temperature+ 2 humidity			
Cascading Port		2 RJ45 RS485 input & output			
Maximum PDU Cascading		16 PDUs			

Network Features	
HTTP/HTTPS	Supports HTTP or HTTPS to access the WEB GUI
SNMP (v1/v2c/v3 with trap)	SNMP is used to manage devices
SMTP	Supports sending alarm information by email
NTP	The network can synchronize time automatically
DHCP	Automatically obtains the IP and DNS address
DNS	Configure devices using domain names instead of IP addresses
MDNS	Access the device using the host name of the device on the device that supports the MDNS service
CLI	Configure devices through serial port commands
PDU Creating a Virtual Group	Virtual groups can be created for outlets of cascaded PDUs
Local Alarm	Beeper & LCD flashing, can be pressed to eliminate the sound alarm to enable or disable the outlets synchronously
Event Log	Web GUI download and USB export logs; Email or SysLog Supported
Multi-level Users	Admin, super-user, read-only
Firmware Upgrade	WEB GUI, USB, and serial port

General Specifications

Part Number	# of CB's	Apparent Power (kVA)	Input Current per Phase	Input Phase	Input Plug Type	Input Voltage	Outlet Count	Outlet Type	Chassis Dimensions (OU - Cord exits End Cap) (1U/2U - Cord Exists Outlet Face)			
									Height (mm)	Width (mm)	Depth (mm) at Outlet Position	
Basic Series												
E12B01M	0	3.7	16A	1	IEC C20 200-240V Inlet	100-240 VAC	12	(12) C13	44	430	50	
E22B39M	0	3.7	16A	1	IEC 60309 2P+E 6h 16A (IP44)	100-240 VAC	22	(20)C13; (2)C19	800	55	53	
E24B10M	0	3.7	16A	1	IEC 60309 2P+E 6h 16A (IP44)	100-240 VAC	24	(20)C13; (4)C19	1490	55	53	
E24B11M	2	7.4	32A	1	IEC 60309 2P+E 6h 32A (IP44)	100-240 VAC	24	(20)C13; (4)C19	1490	55	53	
E30B06M	2	7.4	32A	1	IEC 60309 2P+E 6h 32A (IP44)	100-240 VAC	30	(24)C13; (6)C19	1490	55	53	
E42B11M	6	22	32A	3	IEC 60309 3P+N+E 6h 32A (IP44)	100-240/346-415 VAC, WYE	42	(30)C13; (12)C19	1750	55	53	
E30B13M	0	11	16A	3	IEC 60309 3P+N+E 6h 16A (IP44)	100-240/346-415 VAC, WYE	30	(24)C13; (6)C19	1490	55	53	
Monitored Input (MI) Series												
E08D01M	0	3.7	16A	1	IEC C20 200-240V Inlet	100-240 VAC	8	(8) C13	44	430	100	
E21D10M	0	3.7	16A	1	IEC 60309 2P+E 6h 16A (IP44)	100-240 VAC	21	(18)C13; (3)C19	1490	55	53	
E24D12M	0	11	16A	3	IEC 60309 3P+N+E 6h 16A (IP44)	200-240/346-415 VAC, WYE	24	(21)C13; (3)C19	1490	55	53	
E24D03M	2	7.4	32A	1	IEC 60309 2P+E 6h 32A (IP44)	100-240 VAC	24	(20)C13; (4)C19	1490	55	53	
E36D01M	6	22	32A	3	IEC 60309 3P+N+E 6h 32A (IP44)	200-240/346-415 VAC, WYE	36	(24)C13; (12)C19	1750	55	53	
E42D06M	2	7.4	32A	1	IEC 60309 2P+E 6h 32A (IP44)	100-240 VAC	42	(36)C13; (6)C19	1750	55	53	
Monitored per Outlet (MPO) Series												
E24F09M	0	3.7	16A	1	IEC 60309 2P+E 6h 16A (IP44)	100-240 VAC	24	(20)C13; (4)C19	1750	55	68	
E36F12M	0	11	16A	3	IEC 60309 3P+N+E 6h 16A (IP44)	100-240/346-415 VAC, WYE	36	(30)C13; (6)C19	1750	55	68	
E24F06M	2	7.4	32A	1	IEC 60309 2P+E 6h 32A (IP44)	100-240 VAC	24	(20)C13; (4)C19	1750	55	68	
E24F08M	6	22	32A	3	IEC 60309 3P+N+E 6h 16A (IP44)	100-240/346-415 VAC, WYE	24	(18)C13; (6)C19	1750	55	68	
Monitored Switched (MS) Series												
E24E04M	0	3.7	16A	1	IEC 60309 2P+E 6h 16A (IP44)	100-240 VAC	24	(20)C13; (4)C19	1750	55	68	
E24E02M	0	11	16A	3	IEC 60309 3P+N+E 6h 16A (IP44)	100-240/346-415 VAC, WYE	24	(18)C13; (6)C19	1750	55	68	
E32E06M	2	7.4	32A	1	IEC 60309 2P+E 6h 32A (IP44)	100-240 VAC	32	(24)C13; (8)C19	1750	55	68	
E24E03M	6	22	32A	3	IEC 60309 3P+N+E 6h 32A (IP44)	100-240/346-415 VAC, WYE	24	(18)C13; (6)C19	1750	55	68	
Monitored & Switched per Outlet (MSPO) Series												
E24G11M	0	3.7	16A	1	IEC 60309 2P+E 6h 16A (IP44)	100-240VAC	24	(20)C13; (4)C19	1750	55	68	
E24G07M	0	11	16A	3	IEC 60309 3P+N+E 6h 16A (IP44)	100-240/346-415 VAC, WYE	24	(18)C13; (6)C19	1750	55	68	
E24G06M	2	7.4	32A	1	IEC 60309 2P+E 6h 32A (IP44)	100-240 VAC	24	(20)C13; (4)C19	1750	55	68	
E24G08M	6	22	32A	3	IEC 60309 3P+N+E 6h 32A (IP44)	100-240/346-415 VAC, WYE	24	(18)C13; (6)C19	1750	55	68	

Accessories	
ENV01	Temperature & humidity sensor
BRK01	PDU mounting bracket
PWRCRD1	IEC C19 to IEC 60309 2P+E 6h 16A (IP44)
PWRCRD2	IEC C19 to SCHUKO CEE 7



ENV01



BRK01



PWRCRD1



PWRCRD2



Scan the code to learn more about this PDU Series.



Asia Pacific (APAC)
Panduit Singapore Pte. Ltd.
331 North Bridge Road, #04-02
Singapore 188720

sgp-customer_service@panduit.com
1800-726-3848 (Singapore)

1800-726-384 (Australia)
001-803-65-7571 (Indonesia)
800-650-1844 (India)
800-650-0369 (India)
02-2182-7300 (Korea)
1800-801-435 (Malaysia)
1800-1651-0364 (Philippines)
001-800-65-6385 (Thailand)
65-6305-7800 (Vietnam)

www.panduit.com