

THIS COPY IS PROVIDED ON A RESTRICTED BASIS AND IS NOT TO BE USED IN ANY WAY DETRIMENTAL TO THE INTERESTS OF PANDUIT CORP.

PANDUIT PART NUMBER	FIGURE	CONDUCTOR RANGE	DIMENSIONS IN [ mm ] $\pm 0.1$ [ 2.5 ]			BOLT DIA	WRENCH SIZE	RoHS COMPLIANT
			L	W	H			
GM-1-Q	1	8 SOL - 4 STR	1.25 [ 32 ]	1.00 [ 25 ]	1.63 [ 41 ]	3/8"	9/16"	N/A
GM-2-Q	1	4 SOL - 2/0 STR	1.63 [ 41 ]	1.13 [ 29 ]	1.75 [ 45 ]	3/8"	9/16"	YES
GM-3-Q	1	2/0 SOL - 250 kcmil	2.13 [ 54 ]	1.50 [ 38 ]	2.00 [ 51 ]	1/2"	3/4"	NO
GM-3E-X	2	4 SOL - 300 kcmil	1.96 [ 50 ]	1.50 [ 38 ]	2.32 [ 59 ]	1/2"	3/4"	N/A
*GM4-X	2	300 kcmil - 500 kcmil	2.38 [ 60 ]	1.63 [ 41 ]	2.50 [ 63 ]	1/2"	3/4"	N/A

\*NOTE: GM4-X IS NOT cULus LISTED

NOTES:

1. MADE FROM HIGH COPPER CONTENT ALLOY. FURNISHED WITH FULL THREADED SILICON BOLT, NUTS, AND LOCKWASHERS.
2. CONNECTORS ARE UL LISTED FOR GROUNDING, BONDING, AND DIRECT BURIAL APPLICATIONS
3. SEE WWW.PANDUIT.COM FOR PACKAGE QUANTITIES

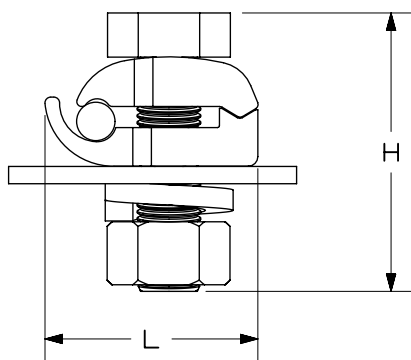
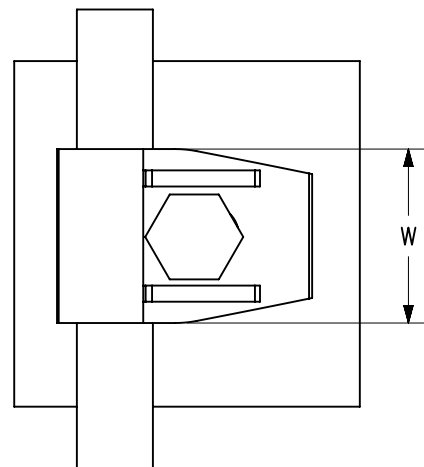
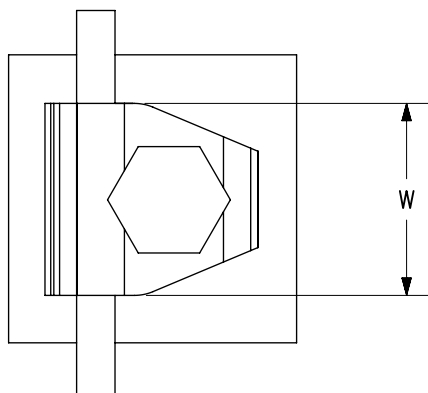


FIGURE 1

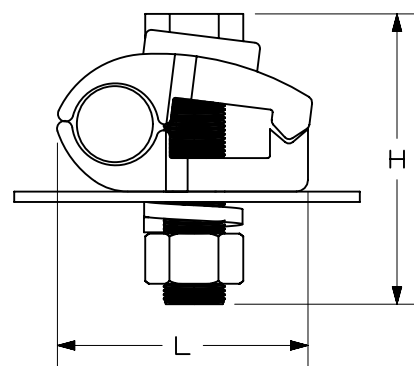


FIGURE 2



PART NUMBER		SEE TABLE	
TITLE		BRONZE GROUND CLAMPS - GM SERIES	
CUSTOMER DRAWING			
ITEM REVISION NAME	N41169BB/09		
DATASET FILE NAME	N41169BB-DC/09A		
THIRD ANGLE PROJECTION			
MATERIAL		DRAWING NUMBER	
SEE NOTES		N41169BB-DC	
DRAWN BY	DATE	CHK	SCALE
ED	10-95	WJB	NONE
SHEET 1 OF 1			SIZE
			A

09A	7-20-23	JHNU	JHNU	MRWA	D. ADDED RoHS COMPLIANT COLUMN C. REVISED DRAWING NUMBER: N41169BB-DC WAS C41169 B. CONVERTED TO NX	133002
REV	DATE	BY	CHK	APR	DESCRIPTION	ECN