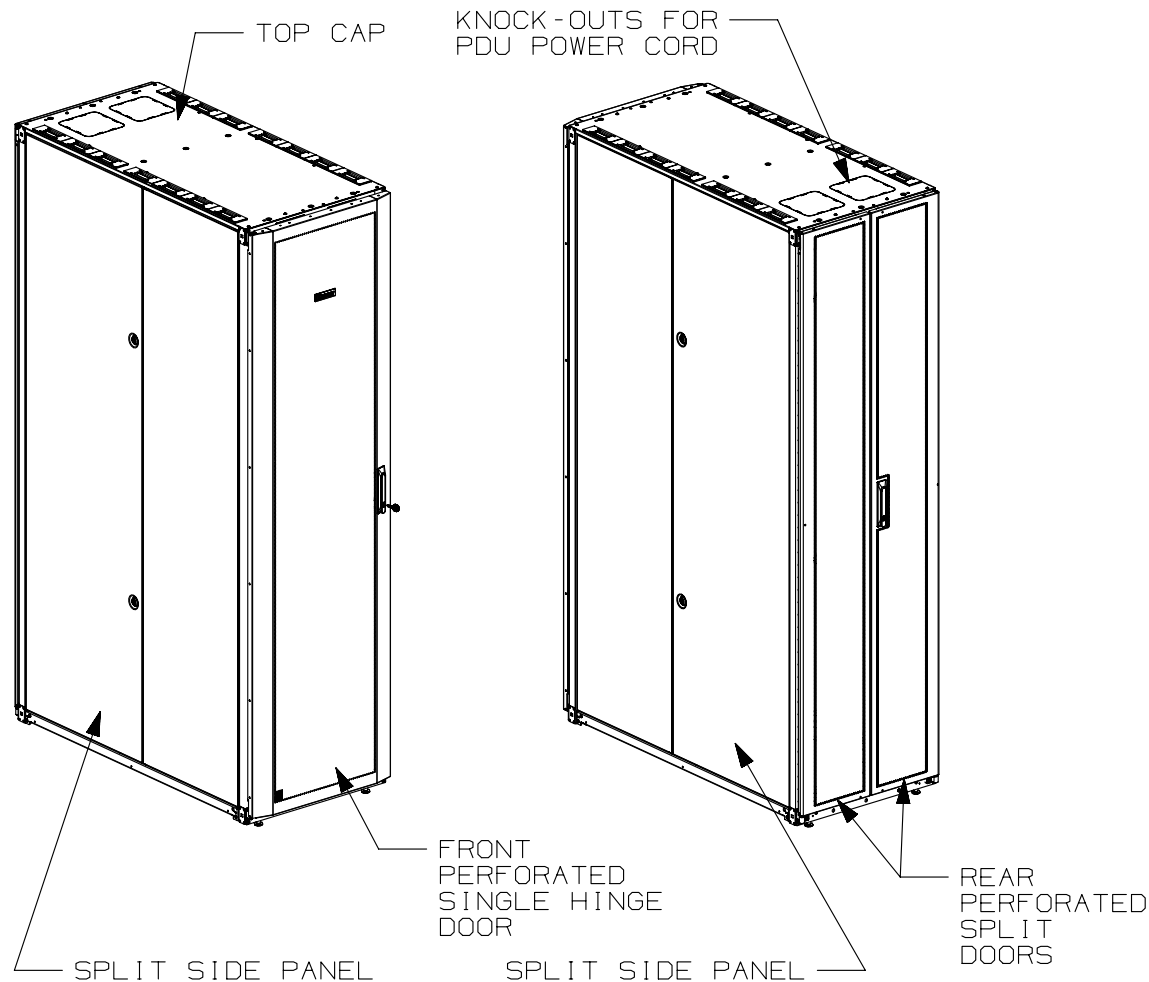


THIS COPY IS PROVIDED ON A RESTRICTED BASIS AND IS NOT TO BE USED IN ANY WAY DETRIMENTAL TO THE INTERESTS OF PANDUIT CORP.



1. VISIT OUR ON-LINE CATALOG AT WWW.PANDUIT.COM FOR A LIST OF CURRENT PARTS APPLICABLE FOR USE WITH THIS PRODUCT.
2. PRIMARY DIMENSIONS ARE IN MILLIMETERS.
3. RAIL ADJUSTMENT MEASUREMENTS ARE TAKEN FROM THE FRONT FACE OF EACH EQUIPMENT RAIL. INDEPENDENT ADJUSTABLE REAR EQUIPMENT MOUNTING RAILS (EIA) ADJUST FROM 65mm [2.6in] TO 435mm [17.1in] AND FROM 583mm [22.9in] TO 919mm [36.2in] WITH PDU BRACKETS AND CABLE MANAGEMENT FINGERS IN PLACE. REMOVING PDU BRACKETS AND OPTIONAL FINGERS INCREASES MAXIMUM E-RAIL SPAN TO 1065mm [41.9in].
4. CAN BE USED WITH ANY 19" EIA STANDARD COMPONENT IN ADDITION TO ALL PANDUIT HORIZONTAL CABLE MANAGEMENT AND PATCH PANEL PRODUCTS.
5. EIA UNIVERSAL STANDARD HOLE PROGRESSION ON EQUIPMENT RAILS
15.88mm [.625in], 15.88mm [.625in],
12.70mm [.5in], 15.88mm [.625in],
15.88mm [.625in], 12.7mm [.5in]...ETC.
6. PARTS SUPPLIED:
-BASE CABINET
-FRONT PERFORATED SINGLE HINGE DOOR
(SEE CHART ON SHEET 2)
-REAR PERFORATED SPLIT DOOR
(SEE CHART ON SHEET 2)
-EQUIPMENT RAILS FRONT & REAR (SEE
CHART ON SHEET 2)
-PDU BRACKETS (SEE CHART ON SHEET 2)
-CASTERS (SEE CHART ON SHEET 2)
-CABINET HARDWARE KIT
-INSTRUCTION SHEET
7. RACK UNIT SPACING NUMERALS ARE CLEARLY PRINTED ON EQUIPMENT MOUNTING RAILS.
8. FULLY BONDED STRUCTURE WHEN ASSEMBLED PER INSTRUCTIONS.
9. STATIC LOAD RATING. 1360 Kg (3000 LBS)
10. ROLLING LOAD RATING. 1133 Kg (2500 LBS)
11. SINGLE POINT GROUND LOCATIONS AT TOP AND BOTTOM OF CABINET.
12. ALL CABINET RAILS ARE INSTALLED NUMBERS UP.
13. MAXIMUM EQUIPMENT DEPTH, 1111mm [43.75].

							TITLE NET-ACCESS S-TYPE CABINET WITH VERTICAL PATCHING 600mm WIDE X 1200mm DEEP FAMILY					
							CUSTOMER DRAWING					
							ITEM REVISION NAME 12V352BF/01			<div>PANDUIT</div>		
							DATASET FILE NAME 12V352BF_DC/01A					
							<div><div><div></div></div><div><div></div></div></div> <div>THIRD ANGLE PROJECTION</div>			MATERIAL: N/A		
01A	12-03-14	PBS	ADP	TCN	FLOOR MOUNT DIMENSIONS UPDATED					V09000BX		DRAWING NUMBER: 12V352BF - DC
00A	5-15-13	PBS	NAGL	JDWE	RELEASED TO PRODUCTION		12V352BF-DC					
REV	DATE	BY	CHK	APR	DESCRIPTION	ECN	DRAWN BY PBS	DATE 5-15-13	CHK NAGL	SCALE NONE	SHT 1 OF 1	SIZE A

THIS COPY IS PROVIDED ON A RESTRICTED BASIS AND IS NOT TO BE USED IN ANY WAY DETRIMENTAL TO THE INTERESTS OF PANDUIT CORP.


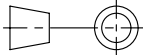
PART NO.	DESCRIPTION	SINGLE HINGE FRONT DOOR	SPLIT REAR DOOR	SPLIT SIDE PANEL	FRONT CAGE NUT E-RAIL	REAR CAGE NUT FINGER MGMT E-RAIL	REAR CAGE NUT VERTICAL PATCH E-RAIL	STANDARD PDU BRACKETS	CASTERS	CABLE MGMT FINGERS	CABINET WEIGHT FULLY UNPACKAGED	CABINET WEIGHT SHIPPING WEIGHT
S6222*P	NET-ACCESS S-TYPE CABINET 600mm X 42RU X 1200mm DEEP	01	01	02	02	00	02	02	04	00	129 Kg/EACH 285 LBS/EACH	150 Kg/EACH 330 LBS/EACH
S6522*P	NET-ACCESS S-TYPE CABINET 600mm X 45RU X 1200mm DEEP	01	01	02	02	00	02	02	04	00	134 Kg/EACH 295 LBS/EACH	154 Kg/EACH 340 LBS/EACH
S6822*P	NET-ACCESS S-TYPE CABINET 600mm X 48RU X 1200mm DEEP	01	01	02	02	00	02	02	04	00	138 Kg/EACH 305 LBS/EACH	159 Kg/EACH 350 LBS/EACH
S6229*P	NET-ACCESS S-TYPE CABINET 600mm X 42RU X 1200mm DEEP	01	01	00	02	00	02	02	04	00	93 Kg/EACH 205 LBS/EACH	113 Kg/EACH 250 LBS/EACH
S6529*P	NET-ACCESS S-TYPE CABINET 600mm X 45RU X 1200mm DEEP	01	01	00	02	00	02	02	04	00	96 Kg/EACH 212 LBS/EACH	116 Kg/EACH 257 LBS/EACH
S6829*P	NET-ACCESS S-TYPE CABINET 600mm X 48RU X 1200mm DEEP	01	01	00	02	00	02	02	04	00	99 Kg/EACH 219 LBS/EACH	120 Kg/EACH 264 LBS/EACH

* DENOTES COLOR

"B" = BLACK

"W" = WHITE

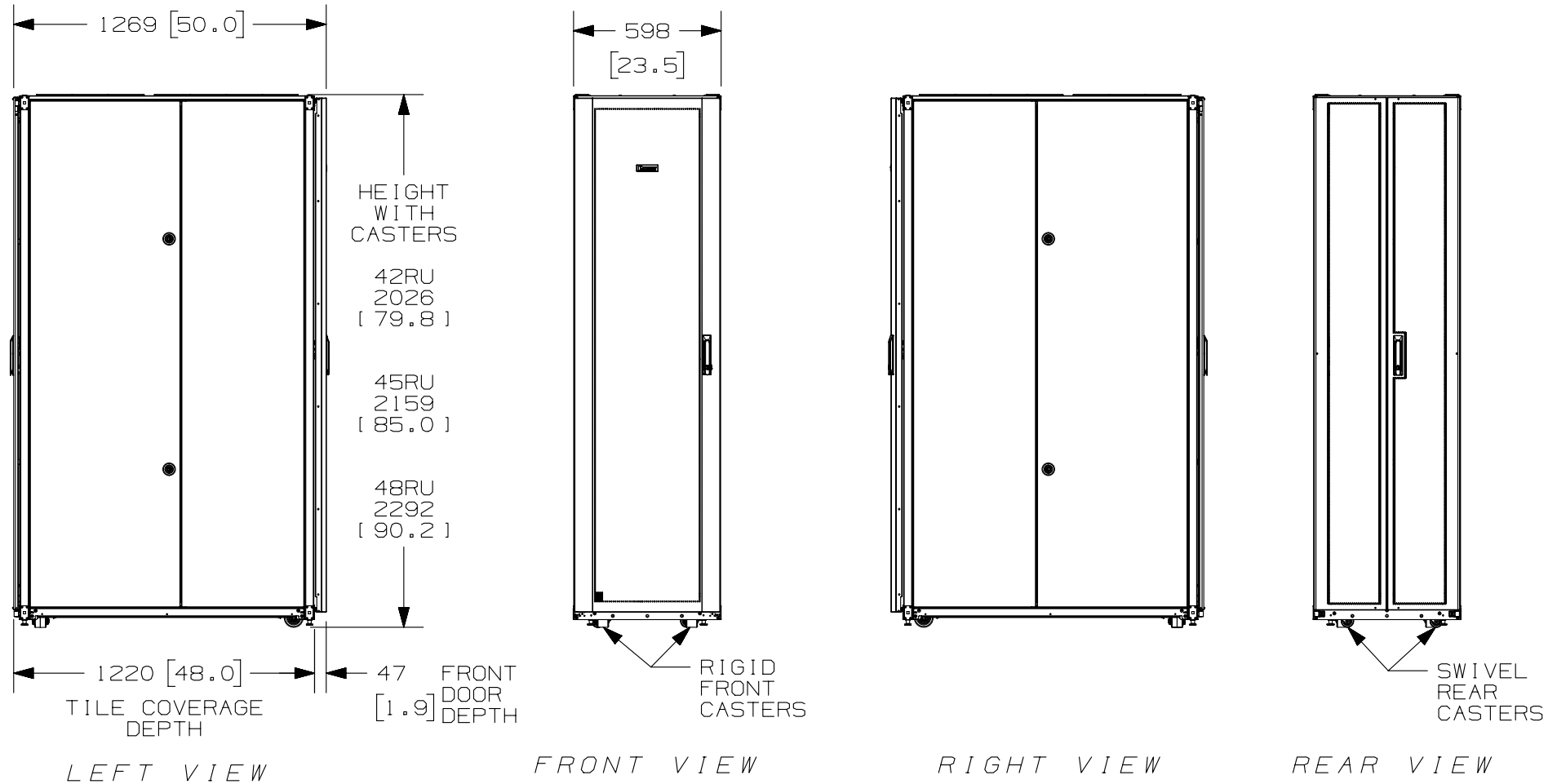
01A	12-03-14	PBS	ADP	TCN	SEE SHEET 1 OF 5 FOR REVISIONS	V09000BX
00A	5-15-13	PBS	NAGL	JDWE	SEE SHEET 1 OF 5 FOR REVISIONS	12V352BF-DC
REV	DATE	BY	CHK	APR	DESCRIPTION	ECN


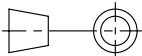
TITLE				NET-ACCESS S-TYPE CABINET WITH VERTICAL PATCHING 600mm WIDE X 1200mm DEEP FAMILY			
				CUSTOMER DRAWING			
ITEM REVISION NAME							
12V352BF/01.PRT							
DATASET FILE NAME							
12V352BF_DC/01A.PRT				MATERIAL:			
				N/A			
				DRAWING NUMBER:			
				12V352BF - DC			
DRAWN BY		DATE		CHK		SCALE	
PBS		5-15-13		NAGL		NONE	
				SHT 2 OF 5			
				A			

2

1

THIS COPY IS PROVIDED ON A RESTRICTED BASIS AND IS NOT TO BE USED IN ANY WAY DETRIMENTAL TO THE INTERESTS OF PANDUIT CORP.



							TITLE NET-ACCESS S-TYPE CABINET WITH VERTICAL PATCHING 600mm WIDE X 1200mm DEEP FAMILY					
							CUSTOMER DRAWING					
							ITEM REVISION NAME 12V352BF/01.PRT					
							DATASET FILE NAME 12V352BF_DC/01A.PRT					
							 THIRD ANGLE PROJECTION				MATERIAL: N/A	
											DRAWING NUMBER: 12V352BF-DC	
01A	12-03-14	PBS	ADP	TCN	SEE SHEET 1 OF 5 FOR REVISIONS	V09000BX						
00A	5-15-13	PBS	NAGL	JDWE	SEE SHEET 1 OF 5 FOR REVISIONS	12V352BF-DC						
REV	DATE	BY	CHK	APR	DESCRIPTION	ECN	DRAWN BY PBS	DATE 5-15-13	CHK NAGL	SCALE NONE	SHT 3 OF 5	SIZE A

2

1

THIS COPY IS PROVIDED ON A RESTRICTED BASIS AND IS NOT TO BE USED IN ANY WAY DETRIMENTAL TO THE INTERESTS OF PANDUIT CORP.

RACK UNITS ARE
NUMBERED AND
INDEXED FOR
IDENTIFICATION

(2) FIXED
FRONT
EQUIPMENT
RAILS

SEE NOTES ON
SHEET 1 FOR
REAR EQUIPMENT
RAIL ADJUSTMENT
RANGE

(2) REAR EQUIPMENT
RAILS VERTICAL PATCH
TYPE
42RU - 14 CASSETTES
45RU - 15 CASSETTES
48RU - 16 CASSETTES

(2) PDU
BRACKETS

FRONT

REAR

FRONT DOOR, REAR DOOR,
AND SIDE PANELS NOT SHOWN

(9) LOCATIONS
TAPPED FOR M10
THREADED ROD

REAR

(2) 165mm X 165mm
[6.5in] [6.5in]
KNOCKOUTS FOR PDU
POWER CORDS
COMPATIBLE
W/ COOL BOOT
P/N: CTGN6X6

(14) CABLE
OPENINGS
(33mm X 120mm)
[1.3in] [4.7in]
WITH BEZELS
AND COVERS
COMPATIBLE
W/ COOL BOOT
P/N: CTGN1X5

FRONT

TOP VIEW

TITLE

NET-ACCESS S-TYPE CABINET WITH VERTICAL
PATCHING 600mm WIDE X 1200mm DEEP FAMILY

CUSTOMER DRAWING

ITEM REVISION NAME

12V352BF/01.PRT

DATASET FILE NAME

12V352BF_DC/01A.PRT

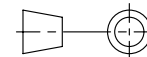
PANDUIT

MATERIAL:

N/A

DRAWING NUMBER:

12V352BF-DC



THIRD ANGLE
PROJECTION

DRAWN BY

DATE

CHK

SCALE

PBS

5-15-13

NAGL

NONE

SHT 4 OF 5

SIZE

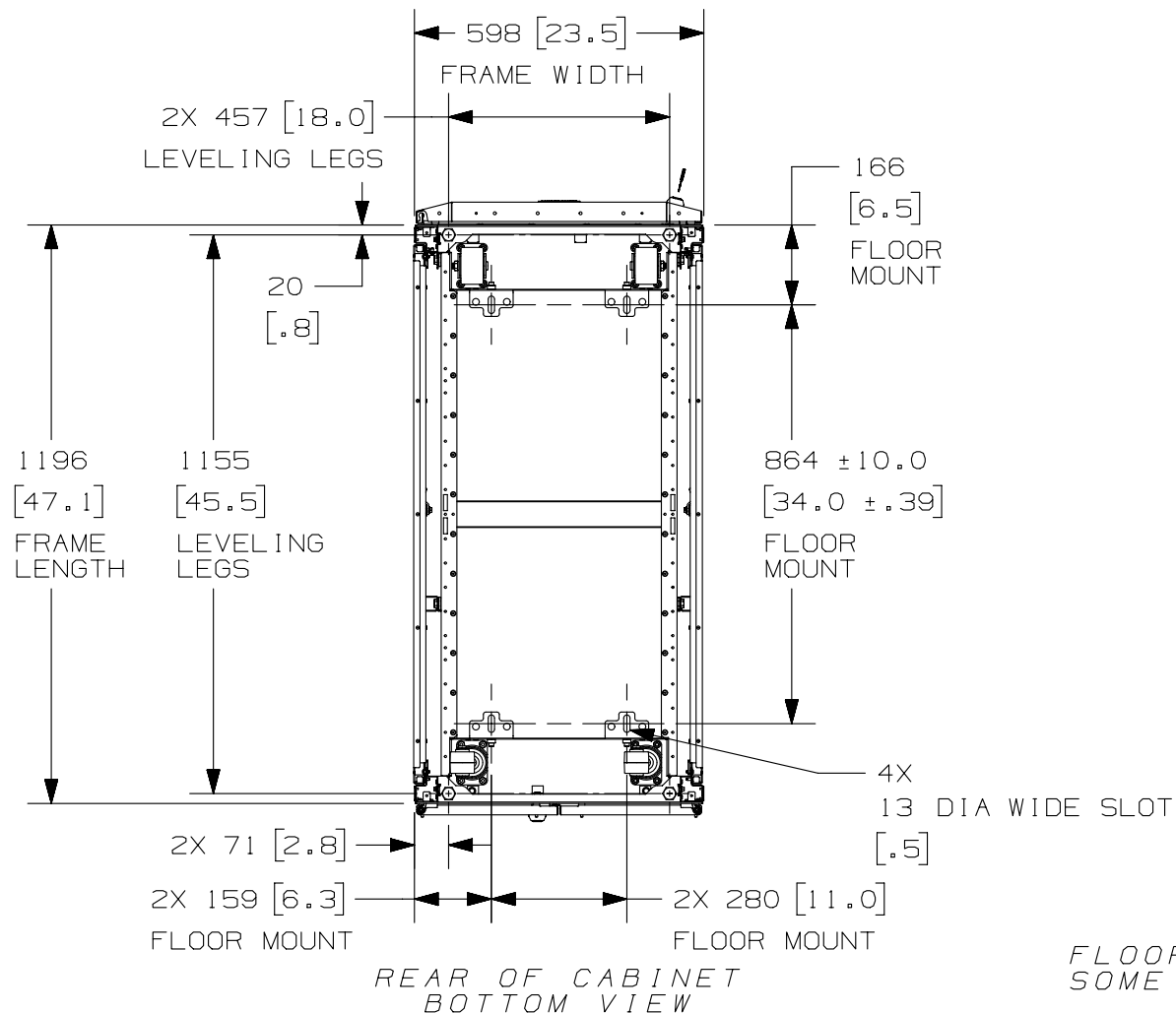
A

01A	12-03-14	PBS	ADP	TCN	SEE SHEET 1 OF 5 FOR REVISIONS	V09000BX
00A	5-15-13	PBS	NAGL	JDWE	SEE SHEET 1 OF 5 FOR REVISIONS	12V352BF-DC
REV	DATE	BY	CHK	APR	DESCRIPTION	ECN

2

1

THIS COPY IS PROVIDED ON A RESTRICTED BASIS AND IS NOT TO BE USED IN ANY WAY DETRIMENTAL TO THE INTERESTS OF PANDUIT CORP.



FLOOR MOUNTING HOLE LOCATIONS -
SOME PARTS REMOVED FOR CLARITY

TITLE

NET-ACCESS S-TYPE CABINET WITH VERTICAL
PATCHING 600mm WIDE X 1200mm DEEP FAMILY

CUSTOMER DRAWING

ITEM REVISION NAME

12V352BF/01.PRT

DATASET FILE NAME

12V352BF_DC/01A.PRT

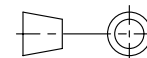
PANDUIT

MATERIAL:

N/A

DRAWING NUMBER:

12V352BF-DC

THIRD ANGLE
PROJECTION

DRAWN BY

DATE

CHK

SCALE

PBS

5-15-13

NAGL

NONE

ECN

SHT 5 OF 5

SIZE

A

01A	12-03-14	PBS	ADP	TCN	SEE SHEET 1 OF 5 FOR REVISIONS	V09000BX	
00A	5-15-13	PBS	NAGL	JDWE	SEE SHEET 1 OF 5 FOR REVISIONS	12V352BF-DC	
REV	DATE	BY	CHK	APR	DESCRIPTION	ECN	

2

1