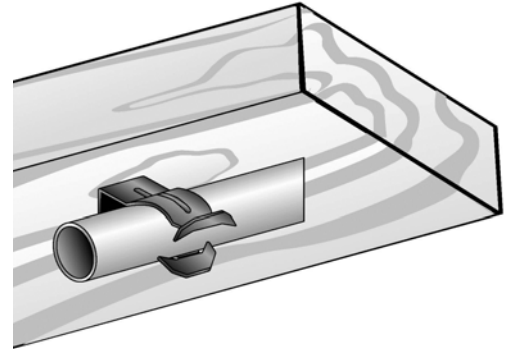
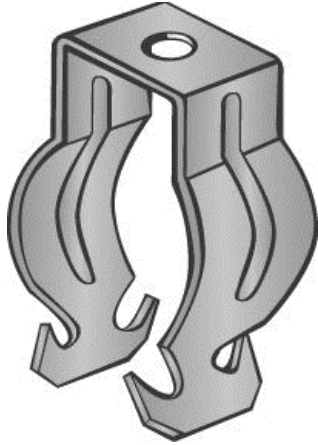


Part Number: P8P

Product Description: PUSH FIT CONDUIT CLIP FOR 1/2" CONDUIT WITH PLAIN MOUNTING HOLE



### Material Specifications

Type: High Carbon Steel, Spring Tempered

Finish: Zinc Phosphate and Oil

Color: Black

### Function Specifications

#### Compatible Wires and Cables

AC/MC CABLE (OD):  
Drop Wire:  
Plain Rod (in):

#### Threaded Rods and Bolts

Tapped Holes:  
Clearance Holes (in): 1/4  
Threaded Rod Size (in):

#### Compatible Conduit

EMT Size (in): 1/2  
Rigid/IMC (in):

#### Compatible Flanges and Studs

Flange Size (in):  
Metal Stud Size (ins):

#### Static Load Rating

Vertical (lbs): 25  
Horizontal (lbs): 15

#### Other

### Codes and Regulatory

Regulatory Certifications: -

Country of Origin: US

### Packaging

General Packaging: Cardboard Box  
Box Size: 7.5 X 5.5 X 4.5

Pieces per Package: 100  
Other Box Features: Fold out handle

### Document Information

Created By: DBLA  
Checked By: DJW  
Approved By: KLN

Customer Specification #: C11228  
Revision Level: 01  
ECN #: GAECN01482  
Date: 12/10/2013