

# Opticom® 1 FAP Wall Mount Splice Enclosures (FWME1BL)

## SPECIFICATIONS

The Opticom Wall Mount Splice Enclosure (FWME1BL) shall house, organize, manage and protect up to 24 fiber optic cable, terminations, cassettes, splices, connectors and patch cords. The FWME1BL accommodates all Panduit Opticom fiber adapter panels (FAP), cassettes, connectors and patch cords with integral cable management, multiple cable routing options and fiber adapter protection when the front door is closed.



## TECHNICAL INFORMATION

<b>Dimensions:</b>	WxHxD = 9.48" x 5.33" x 1.7" (240.9 x 135.4 x 43.2mm)
<b>Splicing chip and holder capacity:</b>	Holds (1) FSC6 fusion splicing chip for up to 24 fiber fusion splicing capabilities
<b>FAP/Cassette holder capacity:</b>	Holds (1) Opticom FAP or Cassette. The enclosure can also be used as a distribution box for up to six Mini-com copper jacks when used with the FMP6 adapter

## KEY FEATURES AND BENEFITS

<b>Superior cable routing:</b>	Three ingress/egress cable routing options, one on the left, one on the right, and one on the back (DIN-rail) side. One 5/8" cable gland (capable of handling 0.16-0.31" cable OD) and two 5/8" hole plugs are included with the enclosure
<b>Adapter protection:</b>	The adapter panel is covered when the friction-hinged door is closed
<b>Lockability:</b>	Added security with tab on the base of the enclosure for a padlock
<b>DIN-rail mountable:</b>	Standard 35mm DIN-rail installation with Panduit part number FWME1BL-DIN (DIN-rail accessory not included)
<b>Interior cable management:</b>	Includes four adhesive-backed internal cable managers and bridge lance built into the base of the enclosure
<b>Exterior cable management:</b>	Includes two external cable managers for patch cord management that install on the front face of the enclosure
<b>Splicing chip:</b>	Allows splicing within the enclosure, comes standard with one (1) FSC6 rubber splicing chip, capable of splicing up to 24 fibers

## APPLICATIONS

Opticom Wall Mount Enclosures are designed to manage and organize fiber distribution in areas where space is limited. They can also be used to manage cable from outside the facility. Enclosures can be used as an interconnect or cross-connect in any telecommunications room and can use any standard FAP or FMP series adapter panel. Opticom Enclosures are completely modular and can manage both fiber and copper cables.

### Opticom® Wall Mount Enclosures

<b>Max 24 fibers (1 FAP):</b>	FWME1BL
<b>Max 48 fibers (2 FAP):</b>	FWME2
<b>Max 24 fibers (1 FSC24):</b>	
<b>Max 96 fibers (4 FAP):</b>	FWME4
<b>Max 48 fibers (4 FST6):</b>	
<b>Max 192 fibers (8 FAP):</b>	FWME8
<b>Max 96 fibers (8 FST6):</b>	

### Adapter Panels

<b>Blank panel:</b>	FAPB
---------------------	------

### LC Adapter Panels

<b>12 SM duplex LC:</b>	FAP12WBUDLCZ
<b>12 MM duplex LC:</b>	FAP12WAQDLCZ

### SC Adapter Panels

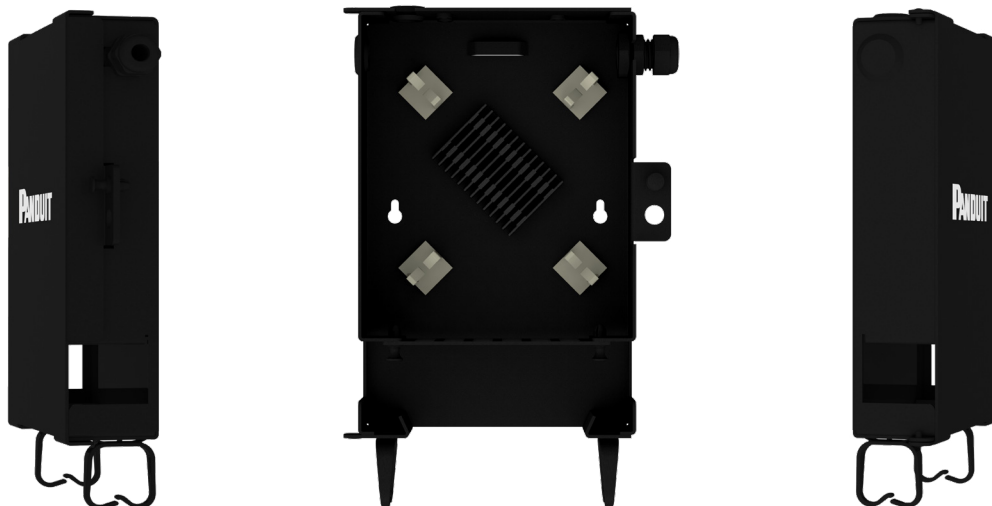
<b>3 duplex SC:</b>	FAP3WBUDSCZ
<b>6 duplex SC:</b>	FAP6WBUDSCZ

### Splice Holders

<b>FWME4, FWME8</b>	
<b>Holder:</b>	FST6H4
<b>Splice tray:</b>	FST6
<b>FWME2</b>	
<b>Holder:</b>	FSTHS
<b>Splice tray:</b>	FSTK
<b>FWME1</b>	
<b>Holder:</b>	FSC6

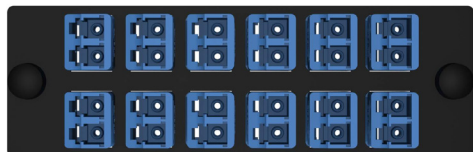
# Opticom® Wall Mount Enclosures

## 1 FAP WALL MOUNT ENCLOSURE

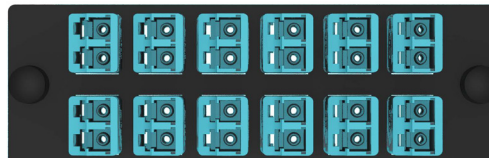


FWME1BL

## ADAPTER PANELS



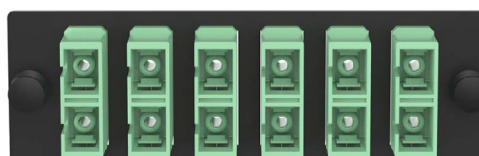
FAP12WBUDLCZ



FAP12WAQDLCZ



FAP6WEIDSCZ



FAP6WAGDSCZ

### WORLDWIDE SUBSIDIARIES AND SALES OFFICES

PANDUIT US/CANADA  
Phone: 800.777.3300

PANDUIT EUROPE LTD.  
London, UK  
Phone: 44.20.8601.7200

PANDUIT SINGAPORE PTE. LTD.  
Republic of Singapore  
Phone: 65.6305.7575

PANDUIT JAPAN  
Tokyo, Japan  
Phone: 81.3.6863.6000

PANDUIT LATIN AMERICA  
Guadalajara, Mexico  
Phone: 52.33.3777.6000

PANDUIT AUSTRALIA PTY. LTD.  
Victoria, Australia  
Phone: 61.3.9794.9020

For a copy of Panduit product warranties, log on to [www.panduit.com/warranty](http://www.panduit.com/warranty)

For more information

Visit us at [www.panduit.com](http://www.panduit.com)  
Contact Customer Service by email: [cs@panduit.com](mailto:cs@panduit.com)  
or by phone: 800.777.3300



© 2023 Panduit Corp.  
ALL RIGHTS RESERVED.  
FBSP108-WW-ENG  
11/2023