

Panduit Bi-Metallic Lugs

specifications

Panduit Bi-metallic Lugs provide permanent terminations for a variety of power and grounding applications, with innovation, highest reliability, and lowest installed cost. Bi-metallic Lugs are useful where an aluminum cable has to be terminated by a copper bus bar or copper contact. Suitable for Stranded and Solid Aluminum cable.

technical information

BML1 and BML2 series are suitable for connection of aluminum wires, power supply cables in distribution equipment and copper terminals of electrical equipment. BML2 series add Oxide inhibitor for lowers electrical resistance of compression joint while sealing out air and moisture to prevent the formation of surface oxides.

application

For connection of Aluminum conductors to copper power and grounding busbars. Multiple crimps are needed - recommend BlackFin[®] crimp tool and die. Stranded/solid Aluminum conductors support.



standards

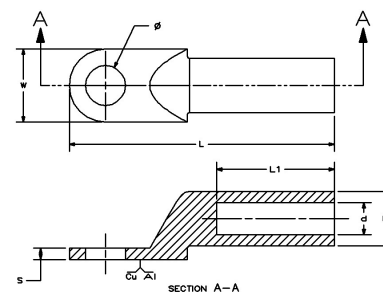
UL 486A-UL486B
RoHS 2.0 (2011/65/EU)

part number

BML * - **35** **10**
Bi-Metal Lug 1-BML1 series Conductor Stud
2-BML2 series size(mm²) Size(mm)

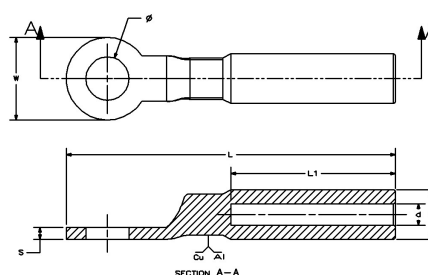
BML1 Series

Part Number	Φ	D	d	L	L1	W	S	PCS / BAG	PCS/Box	PCS / CARTON
BML1-10-8	8.8	10	5.2	65	32	16	2.5	20	140	280
BML1-16-8	8.8	11	6.1	70	34	16	2.6	20	140	280
BML1-35-10	10.8	14	8.5	85	41	20	3.6	20	140	280
BML1-50-10	10.8	16	9.8	90	43	23	4	10	100	200
BML1-70-12	13	18	11.5	102	50	26	4.6	10	80	160
BML1-95-12	13	21	13.5	112	54	28	4.8	10	50	100
BML1-120-14	14.8	23	15	120	56	28	4.8	10	40	80
BML1-150-14	14.8	25	17	126	58	34	5.8	10	30	60
BML1-185-16	17	27	18.6	133	60	37	6.5	10	30	60
BML1-240-16	17	30	21.5	140	63	40	7	10	20	40
BML1-300-20	21	34	24	158	70	45	8.5	5	10	20
BML1-400-20	21	38	27	175	75	52	9.5	5	5	10



BML2 Series

Part Number	Φ	D	d	L	L1	W	S	PCS / BAG	PCS/Box	PCS / CARTON
BML2-25-12	13	16	7.1	90	45	24	4	10	100	200
BML2-35-12	13	16	8.5	90	45	24	4	10	100	200
BML2-50-12	13	20	9.8	95	47	24	5	5	70	140
BML2-70-12	13	20	11.5	95	47	24	5	5	70	140
BML2-95-12	13	20	13.5	95	47	24	5	5	70	140
BML2-120-12	13	25	15	120	62	30	5.5	5	30	60
BML2-150-12	13	25	17	120	62	30	5.5	5	30	60
BML2-240-12	13	32	21.5	128	65	35	6.5	4	24	48
BML2-300-12	13	34	24	140	72	36	7	4	16	32
BML2-400-16	17	42	27	165	87	40	7.5	3	12	24



WORLDWIDE SUBSIDIARIES AND SALES OFFICES

PANDUIT CANADA
Markham, Ontario
cs-cdn@panduit.com
Phone: 800.777.3300

PANDUIT EUROPE LTD.
London, UK
cs-emea@panduit.com
Phone: 44.20.8601.7200

PANDUIT SINGAPORE PTE. LTD.
Republic of Singapore
cs-ap@panduit.com
Phone: 65.6305.7575

PANDUIT JAPAN
Tokyo, Japan
cs-japan@panduit.com
Phone: 81.3.6863.6000

PANDUIT LATIN AMERICA
Guadalajara, Mexico
cs-la@panduit.com
Phone: 52.33.3777.6000

PANDUIT AUSTRALIA PTY. LTD.
Victoria, Australia
cs-aus@panduit.com
Phone: 61.3.9794.9020

For a copy of Panduit product warranties, log on to www.panduit.com/warranty

For more information

Visit us at www.panduit.com

Contact Customer Service by email: cs@panduit.com
or by phone: 800.777.3300



Panduit Bi-Metallic Lugs

crimping tool & dies

Panduit Crimp Tool has high quality and long-term dependability, prevents hands from slipping and reduces worker fatigue. CT-920, CT-920/CV, CT-920CH, CT-920CH/CV, CT-920CH/CCP, CT-930, CT-930CH, CT-930LPCH, CT-940CH^①, CT-2920, CT-2920CCP, CT-2920C CPINT, CT-2920CCPUK, CT-2920 CCPAUS, CT-2920CCPPTO, CT-2930, CT-2930/L, CT-2930/LE, CT-2931, CT-2931/ST, CT-2931/STINT, CT-2931/STUK, CT-2931/ST AUS, CT-2931/TO, CT-2931/STCV, CT-2931/STCVINT, CT-2931/STCVUK, CT-2931/STCVAUS, CT-2931/CVTO, CT-2940^①, CT-2940/L^①, CT-2940/LE^①, CT-2940/ST^①, CT-2940/STINT^①, CT-2940/STUK^①, CT-2940/ST AUS^①, CT-2940/TO^①

^①CD-920 dies can be used with CT-2940 & CT-940CH tools with CD-940-DA die adapter
 CD-940-800A die use CT-2940-ST with the CD-940-DAPT adapter

Panduit Part	Wire Size	Wire Strip Length	A See Tool List Below
Number	(mm ²)	(mm)	Die Part Number Die Index Number (Number of Crimps)
BML1-10-8	10	9	CD-920-4 (2)
BML1-16-8	16	12	CD-920-1 (2)
BML1-35-10	35	41	CD-920-2/0 (2)
BML1-50-10	50	43	CD-920-3/0 (2)
BML1-70-12	70	50	CD-920-250 (2)
BML1-95-12	96	54	CD-920-300 (2)
BML1-120-14	120	56	CD-920-350 (2)
BML1-150-14	150	58	CD-920-400 (2)
BML1-185-16	185	60	CD-920-500 (2)
BML1-240-16	240	63	CD-920-600 (4)
BML1-300-20	300	70	CD-920-750 (4)
BML1-400-20	400	75	CD-940-750A (4)

Panduit Part	Wire Size	Wire Strip Length	A See Tool List Below
Number	(mm ²)	(mm)	Die Part Number Die Index Number (Number of Crimps)
BML2-25-12	25	45	CD-920-3/0 (2)
BML2-35-12	35	45	CD-920-3/0 (2)
BML2-50-12	50	47	CD-920-250 (2)
BML2-70-12	70	47	CD-920-250 (2)
BML2-95-12	95	47	CD-920-250 (2)
BML2-120-12	120	62	CD-920-400 (2)
BML2-150-12	150	62	CD-920-400 (2)
BML2-240-12	240	65	CD-920-500A (4)
BML2-300-12	300	72	CD-920-750 (4)
BML2-400-16	400	87	CD-940-800A (4)

WORLDWIDE SUBSIDIARIES AND SALES OFFICES

PANDUIT CANADA
 Markham, Ontario
 cs-cdn@panduit.com
 Phone: 800.777.3300

PANDUIT EUROPE LTD.
 London, UK
 cs-emea@panduit.com
 Phone: 44.20.8601.7200

PANDUIT SINGAPORE PTE. LTD.
 Republic of Singapore
 cs-ap@panduit.com
 Phone: 65.6305.7575

PANDUIT JAPAN
 Tokyo, Japan
 cs-japan@panduit.com
 Phone: 81.3.6863.6000

PANDUIT LATIN AMERICA
 Guadalajara, Mexico
 cs-la@panduit.com
 Phone: 52.33.3777.6000

PANDUIT AUSTRALIA PTY. LTD.
 Victoria, Australia
 cs-aus@panduit.com
 Phone: 61.3.9794.9020

For a copy of Panduit product warranties, log on to www.panduit.com/warranty

For more information

Visit us at www.panduit.com

Contact Customer Service by email: cs@panduit.com
 or by phone: 800.777.3300



©2022 Panduit Corp.
 ALL RIGHTS RESERVED.
 FBSPXX--WW-ENG
 4/2022