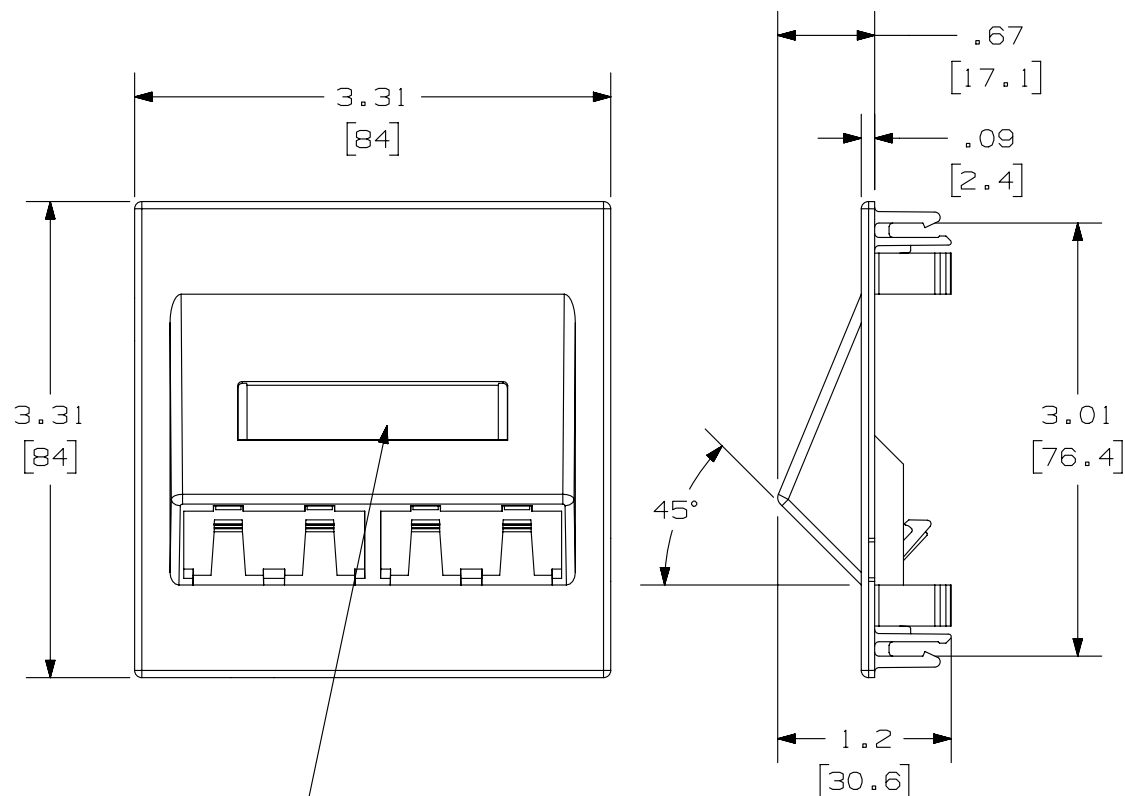


THIS COPY IS PROVIDED ON A RESTRICTED BASIS AND IS NOT TO BE USED IN ANY WAY DETRIMENTAL TO THE INTERESTS OF PANDUIT CORP.

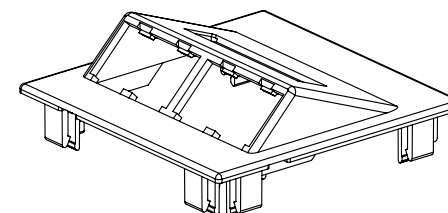


LABEL HOLDER

PANDUIT P/N	WEIGHT
CFPTS4**	.46 LB/10 PCS (207.8 g/10 PCS)

NOTES:

1. SEE CURRENT CATALOG FOR ADDITIONAL PART NUMBER SUFFIXES TO INDICATE COLOR AND OR PACKAGE QUANTITY.
2. SEE CATALOG FOR COMPLETE LIST OF PARTS APPLICABLE FOR USE WITH THIS PART.
3. DIMENSIONS IN PARENTHESES ARE IN METRIC.
4. FACEPLATE ACCEPTS 4 MINI-COM JACKS.
5. FACEPLATE COMES WITH LABEL AND LABEL COVER.



THORSMAN IS A TRADEMARK OF THORSMAN & CO. AB CORPORATION, NYKOPING, SWEDEN.

PART NUMBER		CFPTS4**	
TITLE		MINI-COM 4 POSITION SLOPED THORSMAN FACEPLATE WITH LABEL/COVER	
ITEM REVISION NAME		CUSTOMER DRAWING	
DATASET FILE NAME		M00520BA-DC/07A	
UNLESS OTHERWISE SPECIFIED, DIMENSIONAL TOLERANCES ARE: IN [mm]		MATERIAL: ABS	
.X ± .XX ± .03 [.8]		.XXX ± .010 [.3]	
ANGLES ±		DRAWING NUMBER: 00520-03	
THIRD ANGLE PROJECTION		SHT 1 OF 1	
DRAWN BY	DATE	CHK	SCALE
JSP	7-29-99	MECA	NONE
SIZE		A	

REV	DATE	BY	CHK	APR	DESCRIPTION	ECN
1	4/17/14	JSP	REFR	MMR	A. REVISED DRAWING TITLE BLOCK.	00520-03
R	7-29-99	JSP	MECA	MECA	RELEASED TO PRODUCTION	00520-03