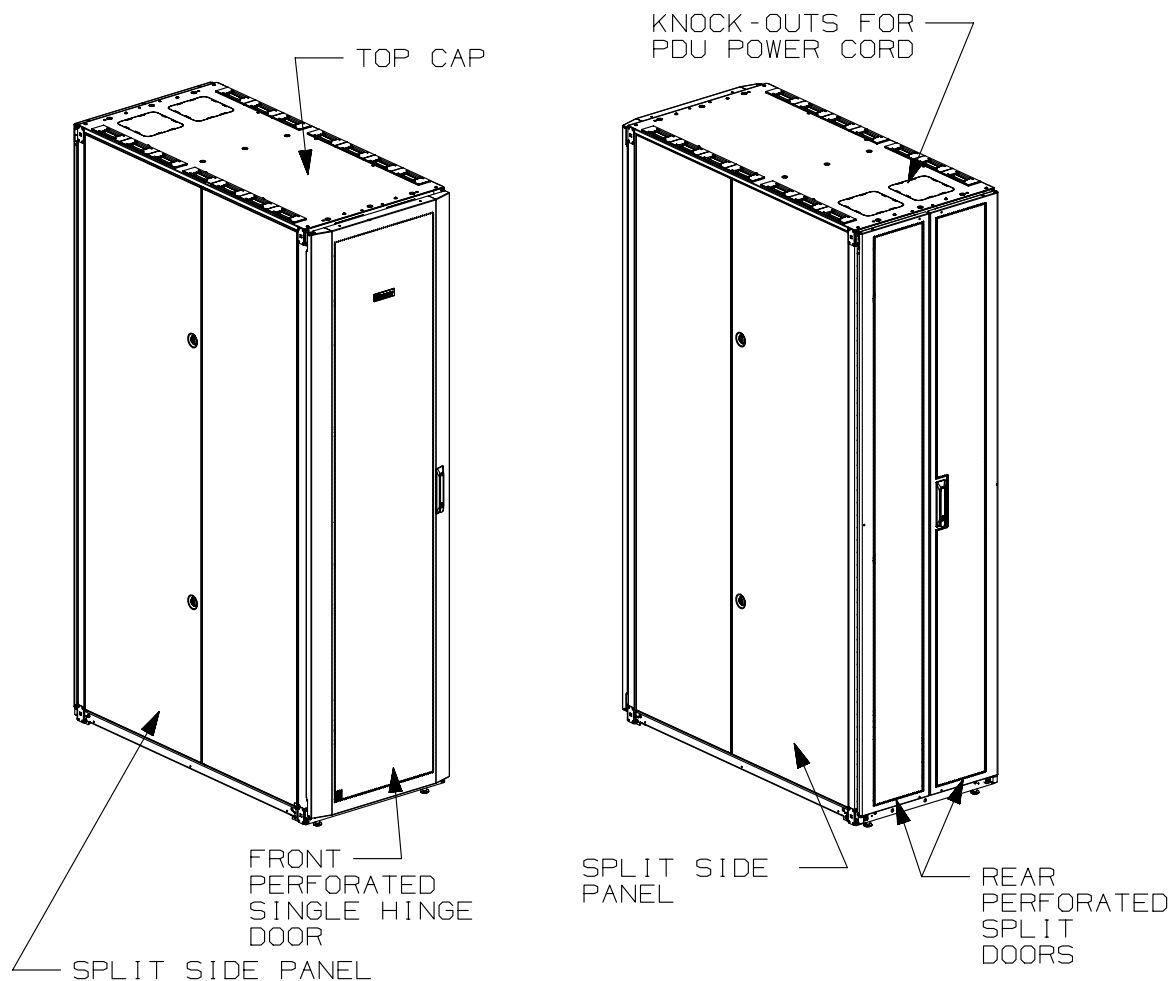


THIS COPY IS PROVIDED ON A RESTRICTED BASIS AND IS NOT TO BE USED IN ANY WAY DETRIMENTAL TO THE INTERESTS OF PANDUIT CORP.



1. VISIT OUR ON-LINE CATALOG AT WWW.PANDUIT.COM FOR A LIST OF CURRENT PARTS APPLICABLE FOR USE WITH THIS PRODUCT.
2. PRIMARY DIMENSIONS ARE IN MILLIMETERS.
3. RAIL ADJUSTMENT MEASUREMENTS ARE TAKEN FROM THE FRONT FACE OF EACH EQUIPMENT RAIL. INDEPENDENT ADJUSTABLE REAR EQUIPMENT MOUNTING RAILS (EIA) ADJUST FROM 65mm [2.6in] TO 435mm [17.1in] AND FROM 583mm [22.9in] TO 919mm [36.2in] WITH PDU BRACKETS AND CABLE MANAGEMENT FINGERS IN PLACE. REMOVING PDU BRACKETS AND OPTIONAL FINGERS INCREASES MAXIMUM E-RAIL SPAN TO 1065mm [41.9in].
4. CAN BE USED WITH ANY 19" EIA STANDARD COMPONENT IN ADDITION TO ALL PANDUIT HORIZONTAL CABLE MANAGEMENT AND PATCH PANEL PRODUCTS.
5. EIA UNIVERSAL STANDARD HOLE PROGRESSION ON EQUIPMENT RAILS
15.88mm [.625in], 15.88mm [.625in],
12.70mm [.50in], 15.88mm [.625in],
15.88mm [.625in], 12.7mm [.50in]...ETC.
6. PARTS SUPPLIED:
-BASE CABINET
-FRONT PERFORATED SINGLE HINGE DOOR
(SEE CHART ON SHEET 2)
-REAR PERFORATED SPLIT DOOR
(SEE CHART ON SHEET 2)
-EQUIPMENT RAILS FRONT & REAR (SEE CHART ON SHEET 2)
-PDU BRACKETS (SEE CHART ON SHEET 2)
-INSTRUCTION SHEET
7. RACK UNIT SPACING NUMERALS ARE CLEARLY PRINTED ON EQUIPMENT MOUNTING RAILS.
8. FULLY BONDED STRUCTURE WHEN ASSEMBLED PER INSTRUCTIONS.
9. STATIC LOAD RATING. 1360 Kg (3000 LBS)
10. ROLLING LOAD RATING. 1133 Kg (2500 LBS)
11. SINGLE POINT GROUND LOCATIONS AT TOP AND BOTTOM OF CABINET.
12. ALL CABINET RAILS ARE INSTALLED NUMBERS UP.
13. MAXIMUM EQUIPMENT DEPTH, 1111mm [43.75in].

01A	9-25-14	PBS	ADP	TCN	FLOOR MOUNT DIMENSIONS UPDATED	V09000BX	
00A	5-28-13	MDCA	NAGL	JDWE	RELEASED TO PRODUCTION	12V352BG-DC	
REV	DATE	BY	CHK	APR	DESCRIPTION	ECN	

TITLE		NET-ACCESS S TYPE CABINET W/O CASTERS 600mm WIDE X 1200mm DEEP FAMILY	
		CUSTOMER DRAWING	
ITEM REVISION NAME		12V352BG/01.PRT	
DATASET FILE NAME		12V352BG_DC/01A.PRT	
		MATERIAL:	
		N/A	
		DRAWING NUMBER:	
		12V352BG-DC	
DRAWN BY		DATE	THIRD ANGLE PROJECTION
MDCA		5-28-13	
CHK		SCALE	
NAGL		NONE	
		SHT 1 OF 5	SIZE
			A

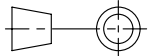
THIS COPY IS PROVIDED ON A RESTRICTED BASIS AND IS NOT TO BE USED IN ANY WAY DETRIMENTAL TO THE INTERESTS OF PANDUIT CORP.

PART NO.	DESCRIPTION	SINGLE HINGE FRONT DOOR	SPLIT REAR DOOR	SPLIT SIDE PANEL	FRONT CAGE NUT E-RAIL	REAR CAGE NUT FINGER MGMT E-RAIL	REAR CAGE NUT VERTICAL PATCH E-RAIL	STANDARD PDU BRACKETS	CASTERS	CABLE MGMT FINGERS	CABINET WEIGHT FULLY UNPACKAGED	CABINET WEIGHT SHIPPING WEIGHT
S6222*9	NET-ACCESS S-TYPE CABINET 600mm X 42RU X 1200mm DEEP	01	01	02	02	02	00	02	00	00	125 Kg/EACH 276 LBS/EACH	146 Kg/EACH 321 LBS/EACH
S6522*9	NET-ACCESS S-TYPE CABINET 600mm X 45RU X 1200mm DEEP	01	01	02	02	02	00	02	00	00	130 Kg/EACH 286 LBS/EACH	150 Kg/EACH 331 LBS/EACH
S6822*9	NET-ACCESS S-TYPE CABINET 600mm X 48RU X 1200mm DEEP	01	01	02	02	02	00	02	00	00	134 Kg/EACH 296 LBS/EACH	155 Kg/EACH 341 LBS/EACH
S6229*9	NET-ACCESS S-TYPE CABINET 600mm X 42RU X 1200mm DEEP	01	01	00	02	02	00	02	00	00	89 Kg/EACH 196 LBS/EACH	109 Kg/EACH 241 LBS/EACH
S6529*9	NET-ACCESS S-TYPE CABINET 600mm X 45RU X 1200mm DEEP	01	01	00	02	02	00	02	00	00	91 Kg/EACH 201 LBS/EACH	111 Kg/EACH 246 LBS/EACH
S6829*9	NET-ACCESS S-TYPE CABINET 600mm X 48RU X 1200mm DEEP	01	01	00	02	02	00	02	00	00	93 Kg/EACH 206 LBS/EACH	114 Kg/EACH 251 LBS/EACH

* DENOTES COLOR

"B" = BLACK

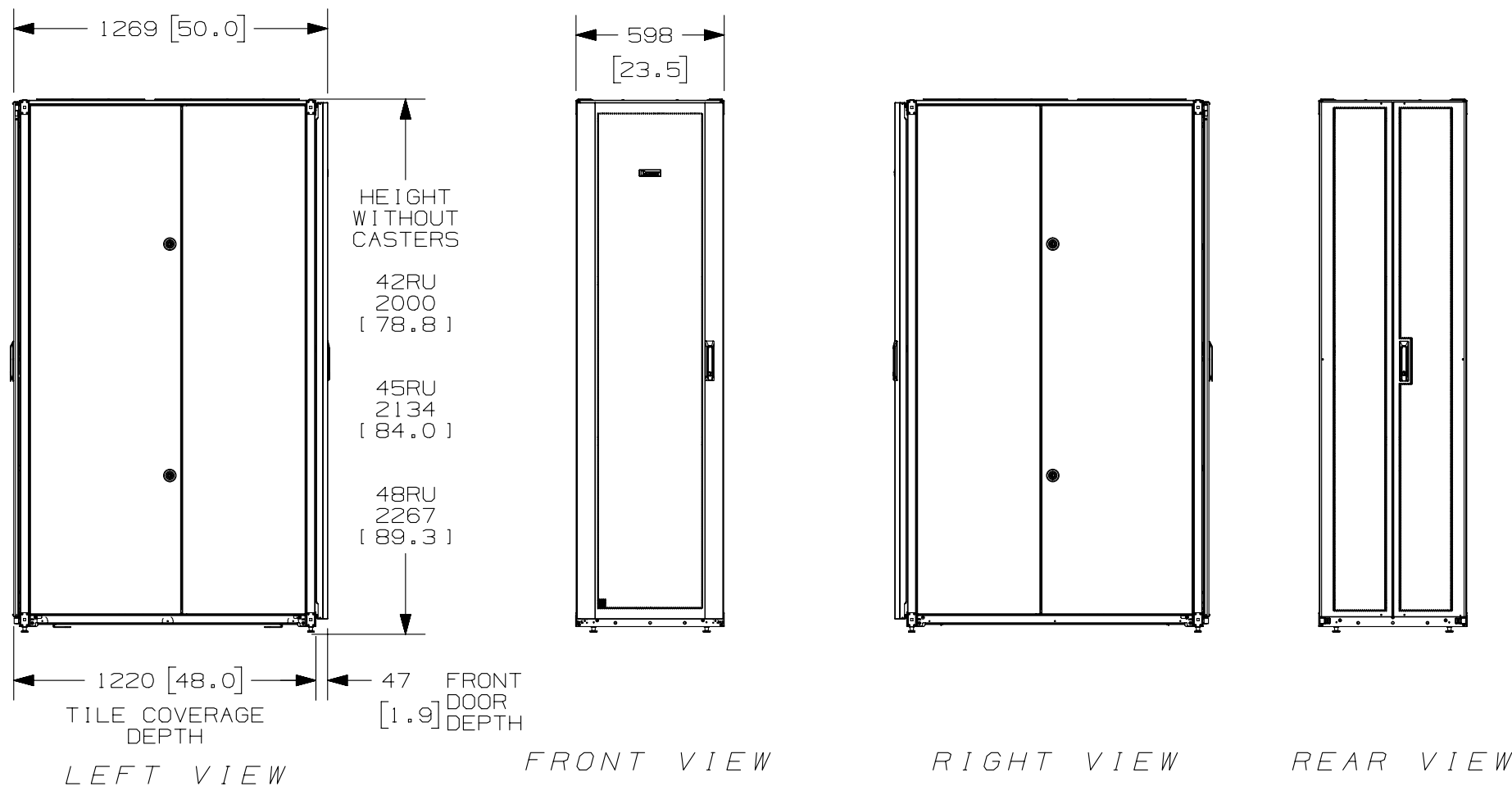
"W" = WHITE

							TITLE
							NET-ACCESS S TYPE CABINET W/O CASTERS 600mm WIDE X 1200mm DEEP FAMILY
							CUSTOMER DRAWING
							ITEM REVISION NAME 12V352BG/01.PRT
							DATASET FILE NAME 12V352BG_DC/01A.PRT
							MATERIAL: N/A
01A	9-25-14	PBS	ADP	TCN	SEE SHEET 1 OF 5 FOR REVISIONS	V09000BX	 THIRD ANGLE PROJECTION
00A	5-28-13	MDCA	NAGL	JDWE	SEE SHEET 1 OF 5 FOR REVISIONS	12V352BG-DC	
REV	DATE	BY	CHK	APR	DESCRIPTION	ECN	DRAWN BY MDCA
							DATE 5-28-13
							CHK NAGL
							SCALE NONE
							SHT 2 OF 5
							SIZE A

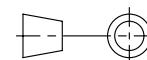
2

1

THIS COPY IS PROVIDED ON A RESTRICTED BASIS AND IS NOT TO BE USED IN ANY WAY DETRIMENTAL TO THE INTERESTS OF PANDUIT CORP.



						TITLE	
						NET-ACCESS S TYPE CABINET W/O CASTERS 600mm WIDE X 1200mm DEEP FAMILY	
						CUSTOMER DRAWING	
						ITEM REVISION NAME	PANDUIT
						12V352BG/01.PRT	
						DATASET FILE NAME	
						12V352BG_DC/01A.PRT	MATERIAL: N/A
01A	9-25-14	PBS	ADP	TCN	SEE SHEET 1 OF 5 FOR REVISIONS	V09000BX	DRAWING NUMBER: 12V352BG-DC
00A	5-28-13	MDCA	NAGL	JDWE	SEE SHEET 1 OF 5 FOR REVISIONS	12V352BG-DC	
REV	DATE	BY	CHK	APR	DESCRIPTION	ECN	



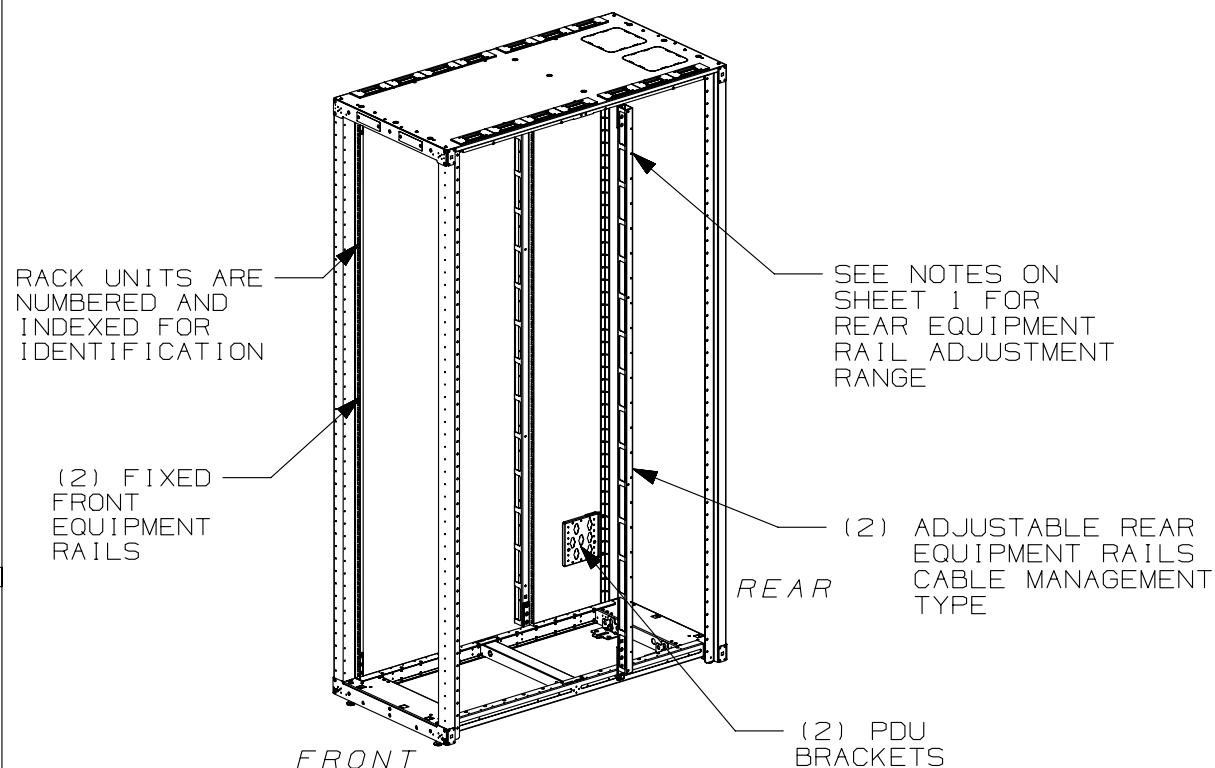
THIRD ANGLE
PROJECTION

DRAWN BY	DATE	CHK	SCALE	DRAWING NUMBER:		SIZE
MDCA	5-28-13	NAGL	NONE	SHT 3 OF 5		A

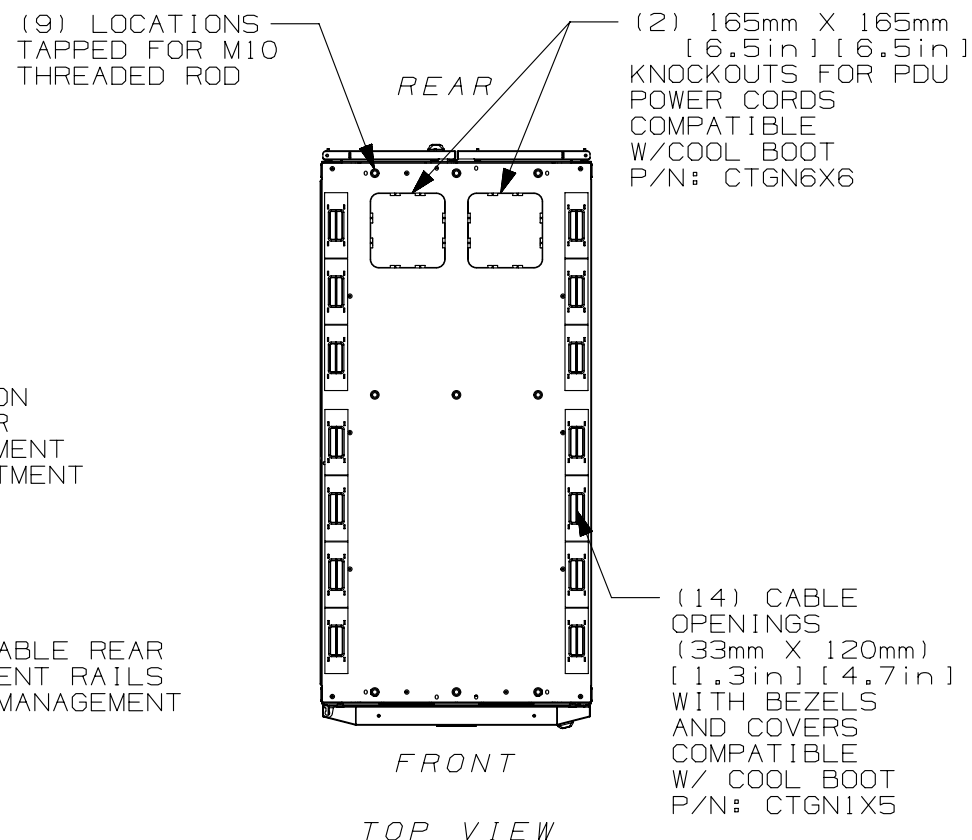
2

1

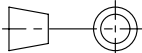
THIS COPY IS PROVIDED ON A RESTRICTED BASIS AND IS NOT TO BE USED IN ANY WAY DETRIMENTAL TO THE INTERESTS OF PANDUIT CORP.



FRONT DOOR, REAR DOOR,
AND SIDE PANELS NOT SHOWN



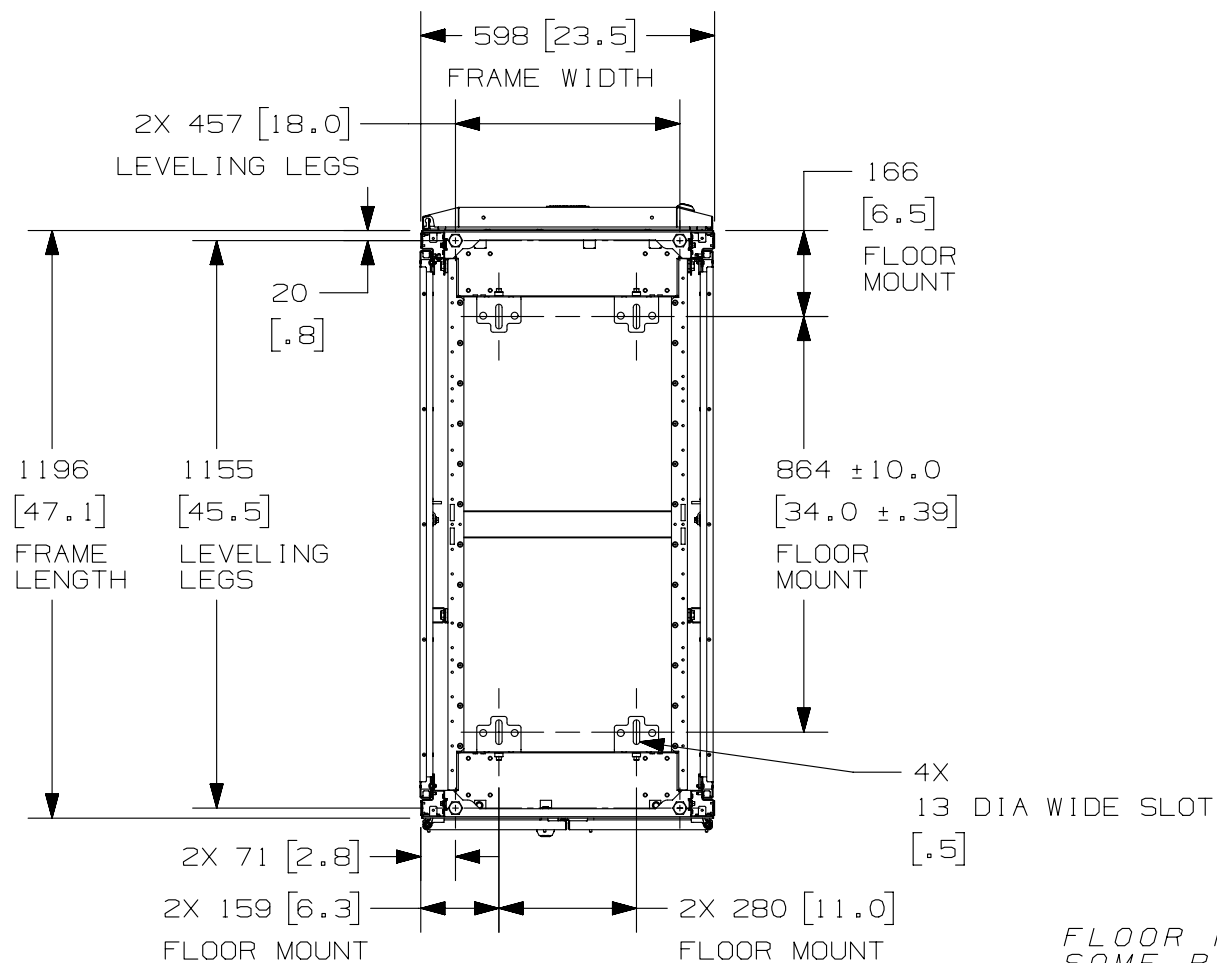
01A	9-25-14	PBS	ADP	TCN	SEE SHEET 1 OF 5 FOR REVISIONS	V09000BX
00A	5-28-13	MDCA	NAGL	JDWE	SEE SHEET 1 OF 5 FOR REVISIONS	12V352BG-DC
REV	DATE	BY	CHK	APR	DESCRIPTION	ECN

TITLE				NET-ACCESS S TYPE CABINET W/O CASTERS 600mm WIDE X 1200mm DEEP FAMILY	
CUSTOMER DRAWING					
ITEM REVISION NAME		12V352BG/01.PRT		PANDUIT	
DATASET FILE NAME		12V352BG_DC/01A.PRT			
		THIRD ANGLE PROJECTION		MATERIAL:	
				N/A	
				DRAWING NUMBER:	
		12V352BG-DC			
DRAWN BY	DATE	CHK	SCALE	SIZE	
MDCA	5-28-13	NAGL	NONE	SHT 4 OF 5	A

2

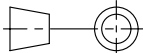
1

THIS COPY IS PROVIDED ON A RESTRICTED BASIS AND IS NOT TO BE USED IN ANY WAY DETRIMENTAL TO THE INTERESTS OF PANDUIT CORP.



FLOOR MOUNTING HOLE LOCATIONS -
SOME PARTS REMOVED FOR CLARITY

01A	9-25-14	PBS	ADP	TCN	SEE SHEET 1 OF 5 FOR REVISIONS	V09000BX
00A	5-28-13	MDCA	NAGL	JDWE	SEE SHEET 1 OF 5 FOR REVISIONS	12V352BG-DC
REV	DATE	BY	CHK	APR	DESCRIPTION	ECN

TITLE			
NET-ACCESS S TYPE CABINET W/O CASTERS 600mm WIDE X 1200mm DEEP FAMILY			
CUSTOMER DRAWING			
ITEM REVISION NAME		PANDUIT	
12V352BG/01.PRT			
DATASET FILE NAME			
12V352BG_DC/01A.PRT		MATERIAL:	
		N/A	
		DRAWING NUMBER:	
		12V352BG-DC	
DRAWN BY	DATE	CHK	SCALE
MDCA	5-28-13	NAGL	NONE
		SHT 5 OF 5	
		A	

2

1