

PANDUIT

NET-ACCESS N-Type Network Cabinets

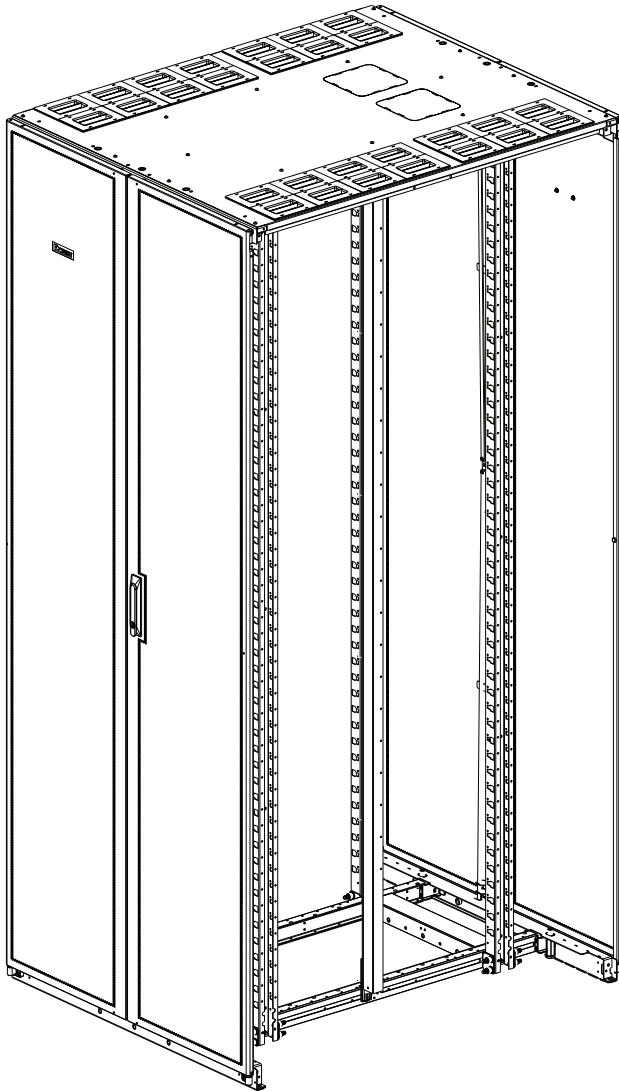
(1000mm Wide Conversion Kit and Accessories)

© Panduit Corp. 2014

INSTALLATION INSTRUCTIONS

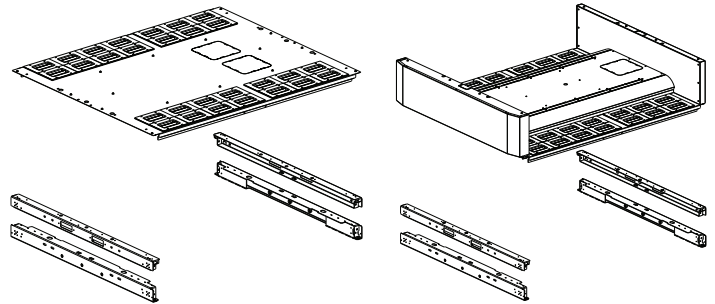
CM624A

NOTE - Some views in this document may vary slightly from your actual cabinet configuration



Tool List:

- T25 Torx bit (for all hardware in N1000EXT)
- T30 Torx bit (for screws in door kit)

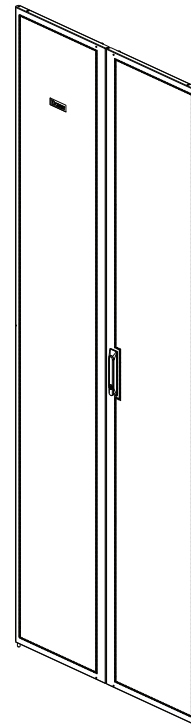


N1000EXT:

- 1000mm x 1200mm Top Cap
- 2x Top Side to Side Beam
- 2x Bottom Side to Side Beam
- Hardware Kit (*not shown*)

N1000EXTCR:

- 1000mm x 1200mm Integrated Top of Cabinet Cable Manager
- 1x Front Vertical Wall & Fascia
- 1x Rear Vertical Wall & Cover
- 2x Top Side to Side Beam
- 2x Bottom Side to Side Beam
- Hardware Kit (*not shown*)



N2SD1000, N5SD1000, N8SD1000, N1SD1000:

- Header Side Split Door
- Handle Side Split Door
- 4x Hinge Brackets
- 4x M6 x 12mm Torx Screws

FOR TECHNICAL SUPPORT www.panduit.com/resources/install_maintain.asp

Remove 800mm Wide Components from N-Type Frame

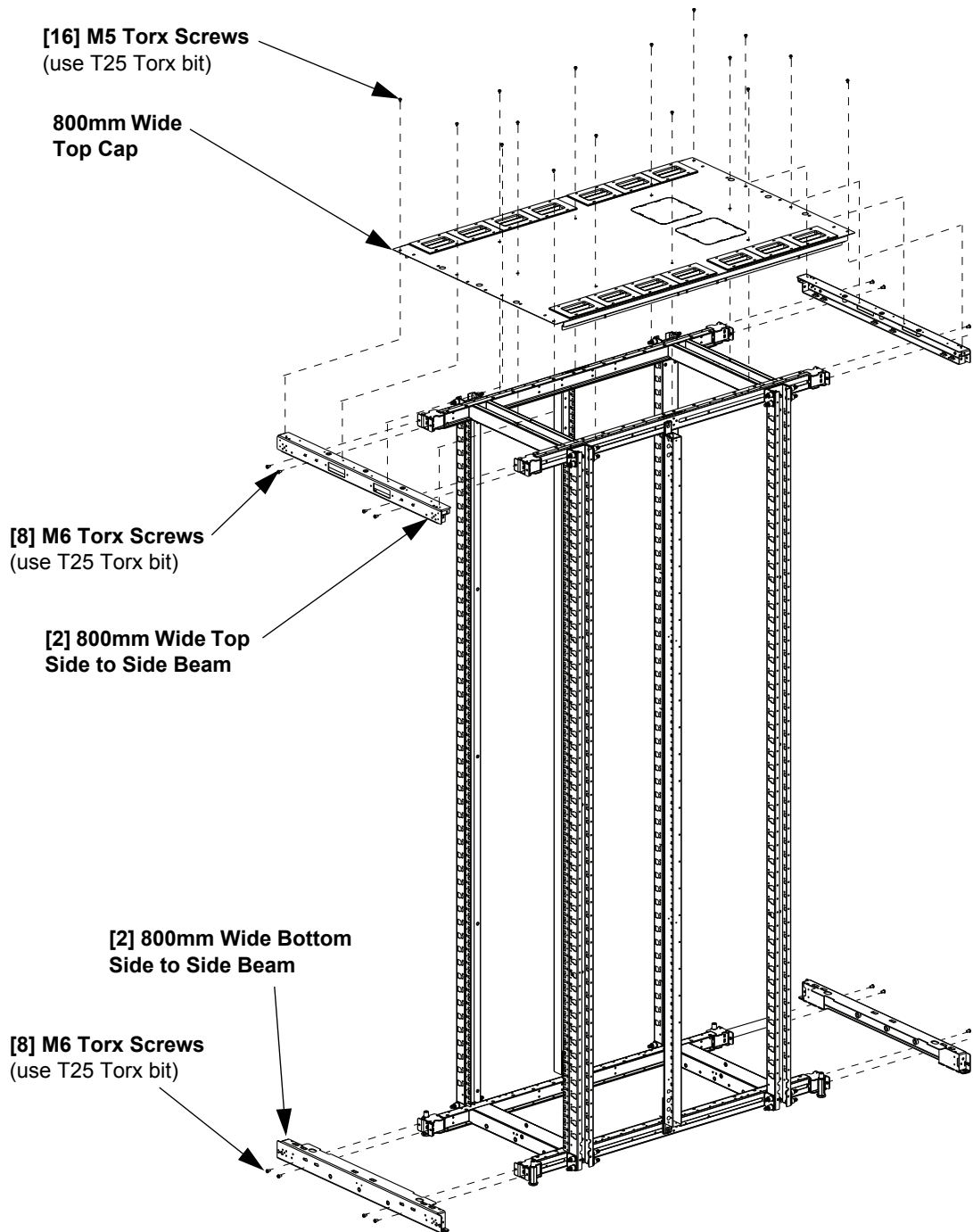
NOTE - Ensure all doors and side panels are not installed on cabinet before removing 800mm Wide components

TOP CAP REMOVAL INSTRUCTIONS

- Remove [16] Torx screws (use T25 Torx bit)
- Carefully remove Top Cap from Cabinet Frame

SIDE TO SIDE BEAM REMOVAL INSTRUCTIONS

- Remove [4] Side to Side Beams ([2] at top of cabinet frame and [2] at bottom)
- Each beam is secured with [4] Torx screws (use T25 Torx bit)



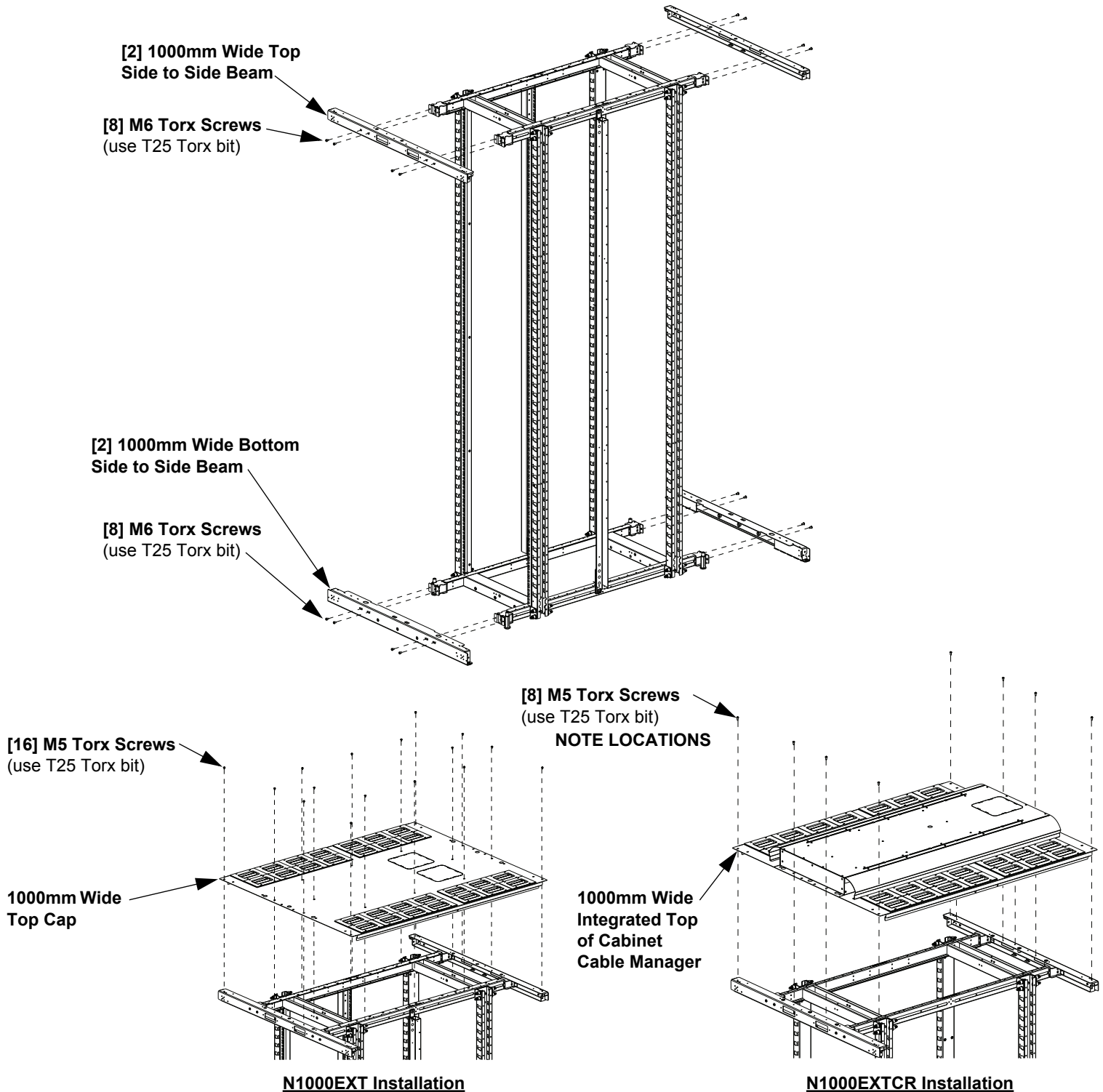
Install 1000mm Wide Components onto N-Type Frame

1000mm WIDE SIDE TO SIDE BEAM INSTALLATION INSTRUCTIONS

-Secure [4] 1000mm Wide Side to Side Beams ([2] at top of cabinet frame and [2] at bottom) to cabinet frame with [4] M6 Torx screws (use T25 Torx bit) per beam

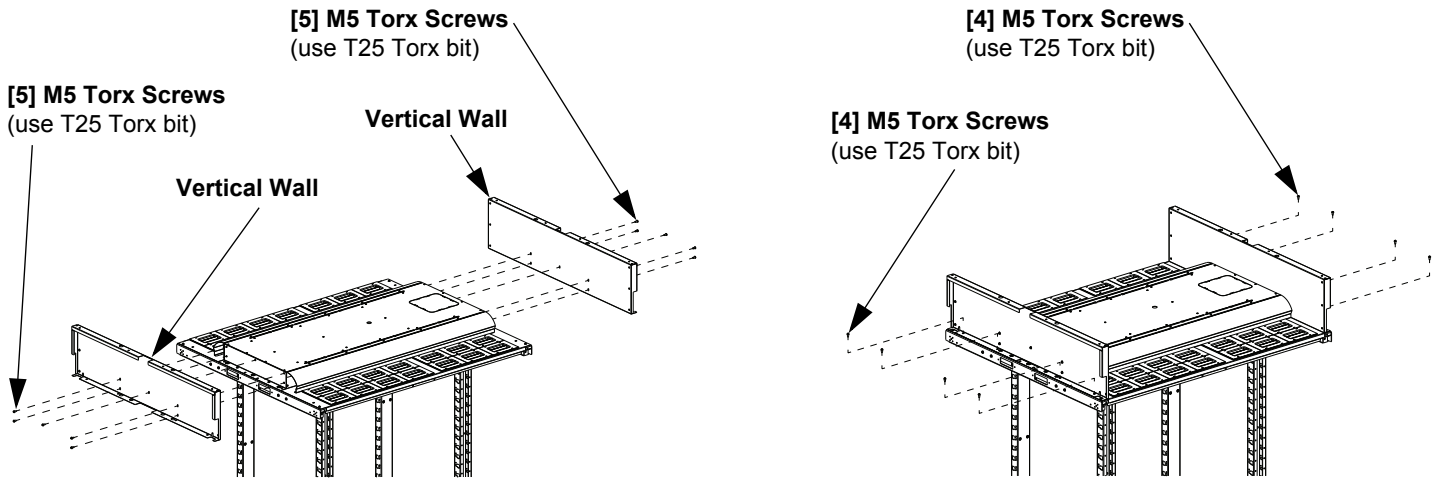
1000mm WIDE TOP CAP OR INTEGRATED TOP OF CABINET CABLE MANAGER INSTALLATION INSTRUCTIONS

-Carefully place 1000mm Wide Top Cap or Integrated Top of Cabinet Cable Manager on cabinet frame
 -Secure to cabinet frame with [8] or [16] M5 Torx screws (use T25 Torx bit)

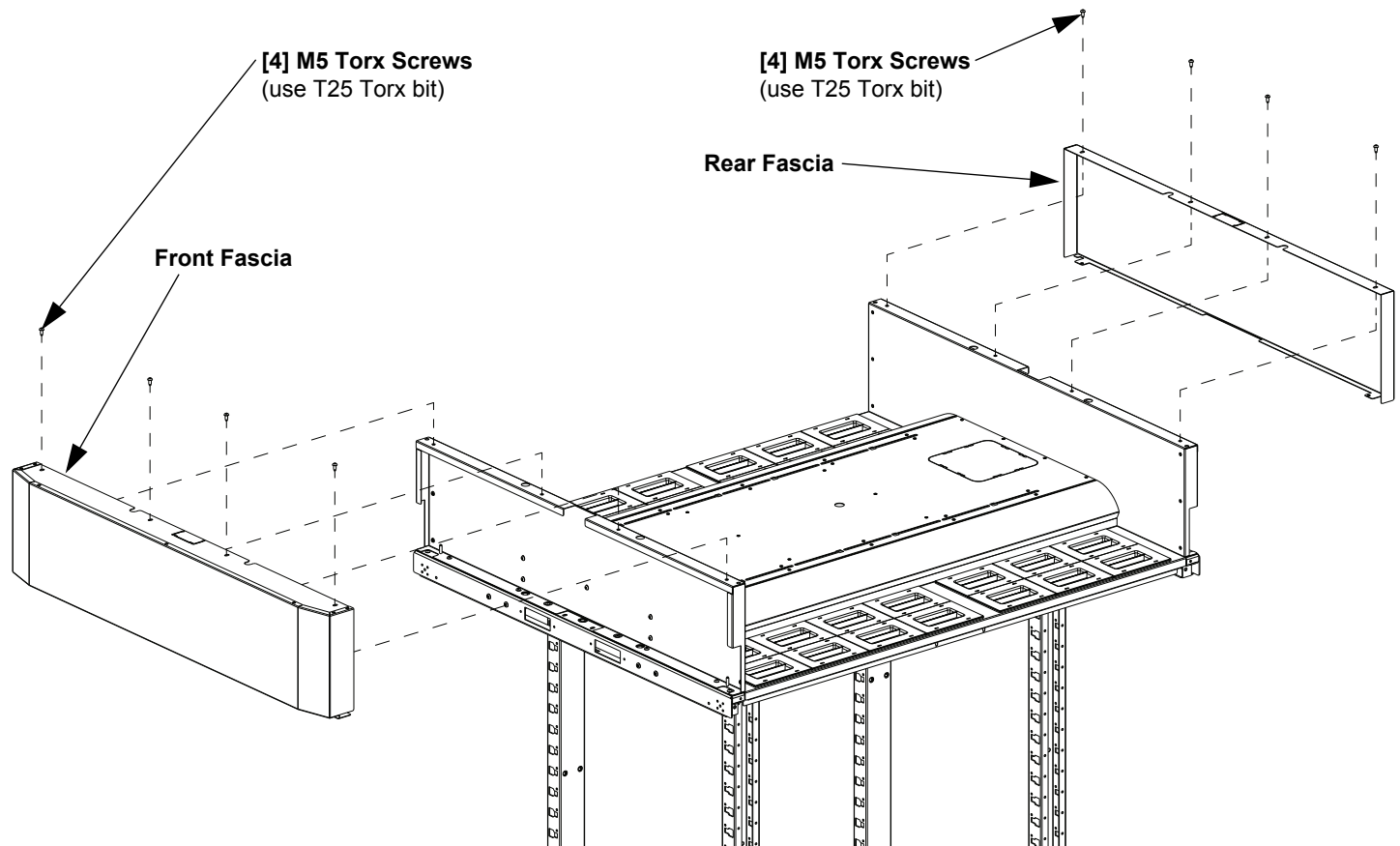


Integrated Top of Cabinet Cable Manager Installation

- Install [2] Vertical Walls on front and back of Top of Cabinet Cable Manager base using [9] M5 Torx screws (use T25 Torx bit) per Wall
- Attach Front Fascia to front Vertical Wall by sliding fascia over studs in vertical wall and secure with [4] M5 Torx screws (use T25 Torx bit)
- Attach Rear Fascia to rear Vertical Wall by sliding fascia over studs in vertical wall and secure with [4] M5 Torx screws (use T25 Torx bit)



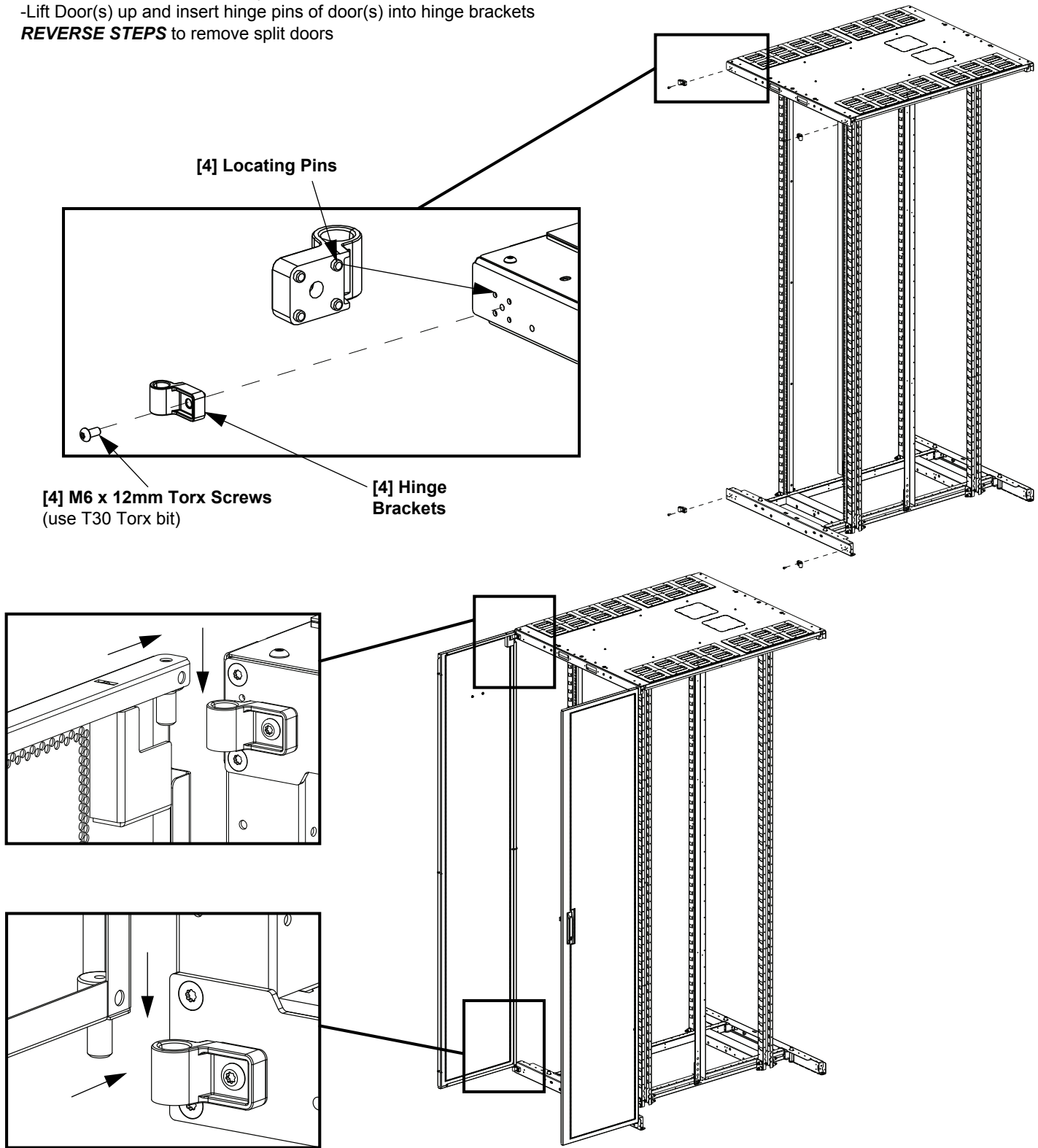
VERTICAL WALL INSTALLATION



1000mm Wide Split Doors - N2SD1000, N5SD1000, N8SD1000, N1SD1000

- Align [4] Locating Pins of each Hinge Bracket with matching hole pattern of cabinet frame
- Secure [4] Hinge Brackets to cabinet frame with [1] M6 x 12mm Torx Screw per bracket (use T30 Torx bit)
- Open Door(s) to approximately 90°
- Lift Door(s) up and insert hinge pins of door(s) into hinge brackets

REVERSE STEPS to remove split doors



THIS PAGE IS LEFT INTENTIONALLY BLANK