

PanZone® Active Wall Mount Enclosure

specifications

The active enclosure shall meet TIA/EIA consolidation point standard requirements. Enclosure shall be wall mountable with total of 6 RU available as user positioned 3 RU brackets for vertically mounting active or passive equipment. Conduit knockouts shall be included to route cables in and out of the enclosure. Tie points are available in the enclosure for cable control. Enclosure shall accept up to two fan kits for additional equipment cooling. The front door shall be removable and lockable. Four back knockouts shall be available for cable ingress/egress or wall mounted duplex power outlet access.



technical information

Dimensions:	35.9"H x 27.9"W x 9.5"D (914mm x 711mm x 241mm)
Weight capacity:	Underwriters labs certified to 100 lbs.
Equipment Mounting:	Two pair of user positionable 3 RU mounting brackets are included for active or passive equipment
Packaging:	Base, locking door, two pair of 3 RU brackets, #10-32 grounding stud, wall mounting template
Material:	16 gauge steel

key features and benefits

Cable routing	Provides optimum cable management while allowing adequate space to safely route the patch cords inside
High capacity	Holds up to 6 RU of active or passive equipment and provides multiple cable entry/exit points via cable knockouts
Modularity	Accepts Data-Patch™ Punchdown Panels, Mini-Com® Modular Patch Panels, and Mini-Com® Modules for copper and fiber applications; individual modules snap in and out
T-70 raceway knockouts	Four T-70 raceway knockouts are provided as an alternative method to bring cables into and out of the enclosure
Removable lockable door	Lockable door removes from the front of the enclosure to facilitate easy internal access in space limited areas
Optional cooling fan	Optional fans for applications where additional cooling is required. Up to two 112 CFM fans can be installed in each enclosure

applications

The PanZone® Active Wall Mount Enclosure is designed to provide an efficient and cost effective way to deploy cabling systems in open office architecture environments. Referred to as Mini Telecommunication Rooms (Mini-TRs), this enclosure is ideal for minimal network connections (24 – 48) located more than 90 meters from the main telecommunications room.

This enclosure provides a compact, secure, and economical solution for housing active electronics, with easy access to complete moves, adds, and changes. It offers flexibility for new and existing building installations that need to be reconfigured or upgraded due to growth. The enclosure also takes into consideration power, cooling, and protection of the active equipment.

PanZone® Active Wall Mount Enclosure

Enclosure: PZAEWM6E

Optional Enclosure Components

Grounding kit: PZAEKG
115VAC 112 CFM fan: PZAEFAN
220VAC 112 CFM fan with Shuko plug: PZAEFK-E

PanZone® Solid UTP Patch Cords**

Cat 6A SD, plenum, plug-plug, blue: UXPPBU*

Cat 6, plenum, plug-plug, blue: UPPBU*

PanZone® Solid STP Patch Cords**

Cat 6A, plenum, plug-plug, blue: SAPPBU*

Mini-Com® Ultimate ID® Modular Patch Panels

24-port, 1 RU: UICMPP24BLY
48-port, 2 RU: UICMPP48BLY

Mini-Com® Modular Patch Panels with Labels

24-port, 1 RU: CPPL24WBLY
48-port, 2 RU: CPPL48WBLY

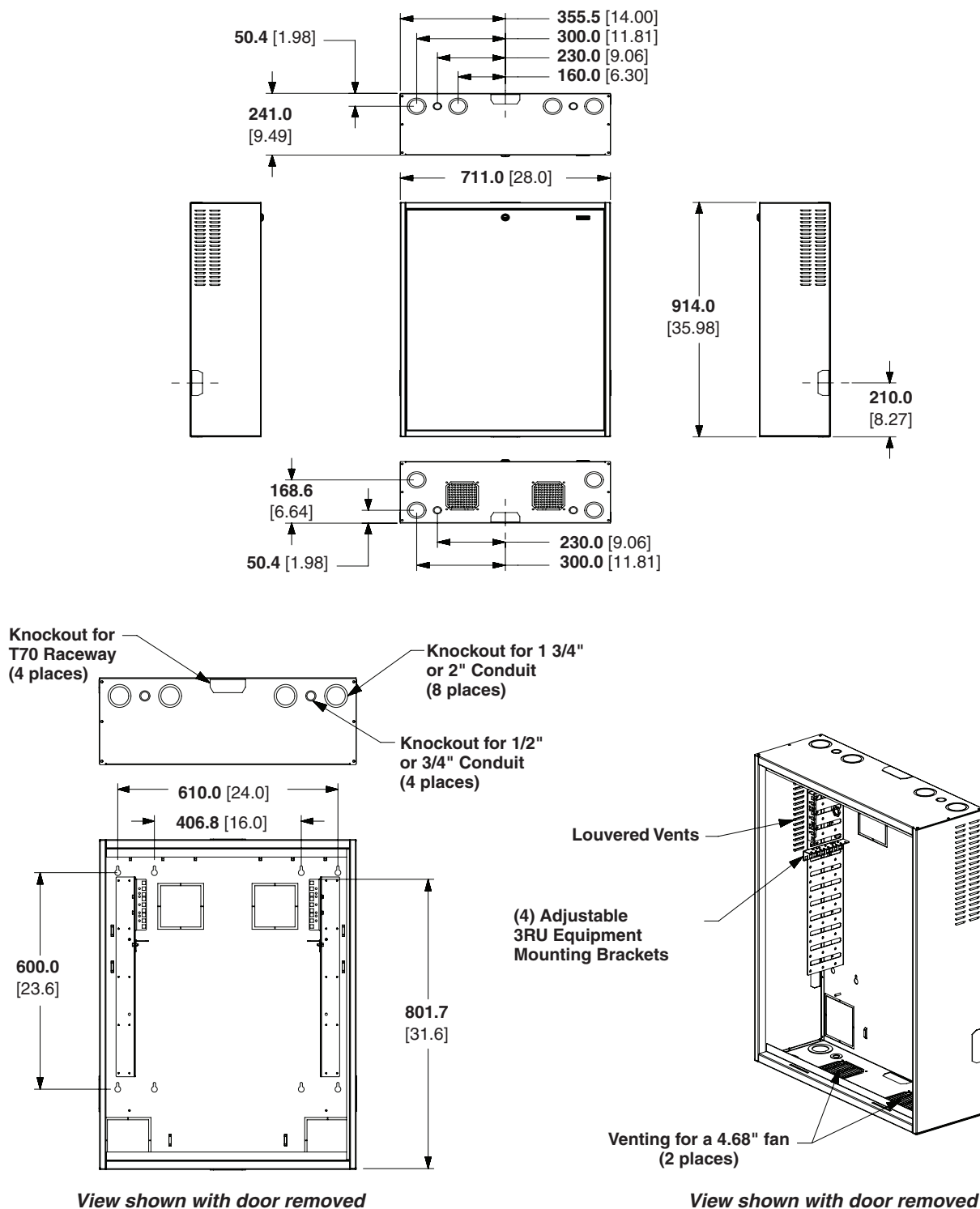
Mini-Com® Modules

Mini-Com® Modules available for copper, fiber, and audio video applications. Visit www.panduit.com for complete offering.

* Zone cords are available in 10 to 100 ft lengths in 5 ft increments. And 100 to 150 ft lengths in 10 ft increments.

** Plug to Plug versions are listed. Jack to Plug and Jack to Jack options are also available

PanZone® Active Wall Mount Enclosure



Dimensions are in metric. [Dimensions in brackets are inches].

WORLDWIDE SUBSIDIARIES AND SALES OFFICES

PANDUIT CANADA
Markham, Ontario
cs-cdn@panduit.com
Phone: 800.777.3300

PANDUIT EUROPE LTD.
London, UK
cs-emea@panduit.com
Phone: 44.20.8601.7200

PANDUIT SINGAPORE PTE. LTD.
Republic of Singapore
cs-ap@panduit.com
Phone: 65.6305.7575

PANDUIT JAPAN
Tokyo, Japan
cs-japan@panduit.com
Phone: 81.3.6863.6000

PANDUIT LATIN AMERICA
Guadalajara, Mexico
cs-la@panduit.com
Phone: 52.33.3777.6000

PANDUIT AUSTRALIA PTY. LTD.
Victoria, Australia
cs-aus@panduit.com
Phone: 61.3.9794.9020

For a copy of Panduit product warranties, log on to www.panduit.com/warranty

For more information

Visit us at www.panduit.com

Contact Customer Service by email: cs@panduit.com
or by phone: 800.777.3300

PANDUIT®

©2016 Panduit Corp.
ALL RIGHTS RESERVED.
ZCSP16--WW-ENG
12/20/19