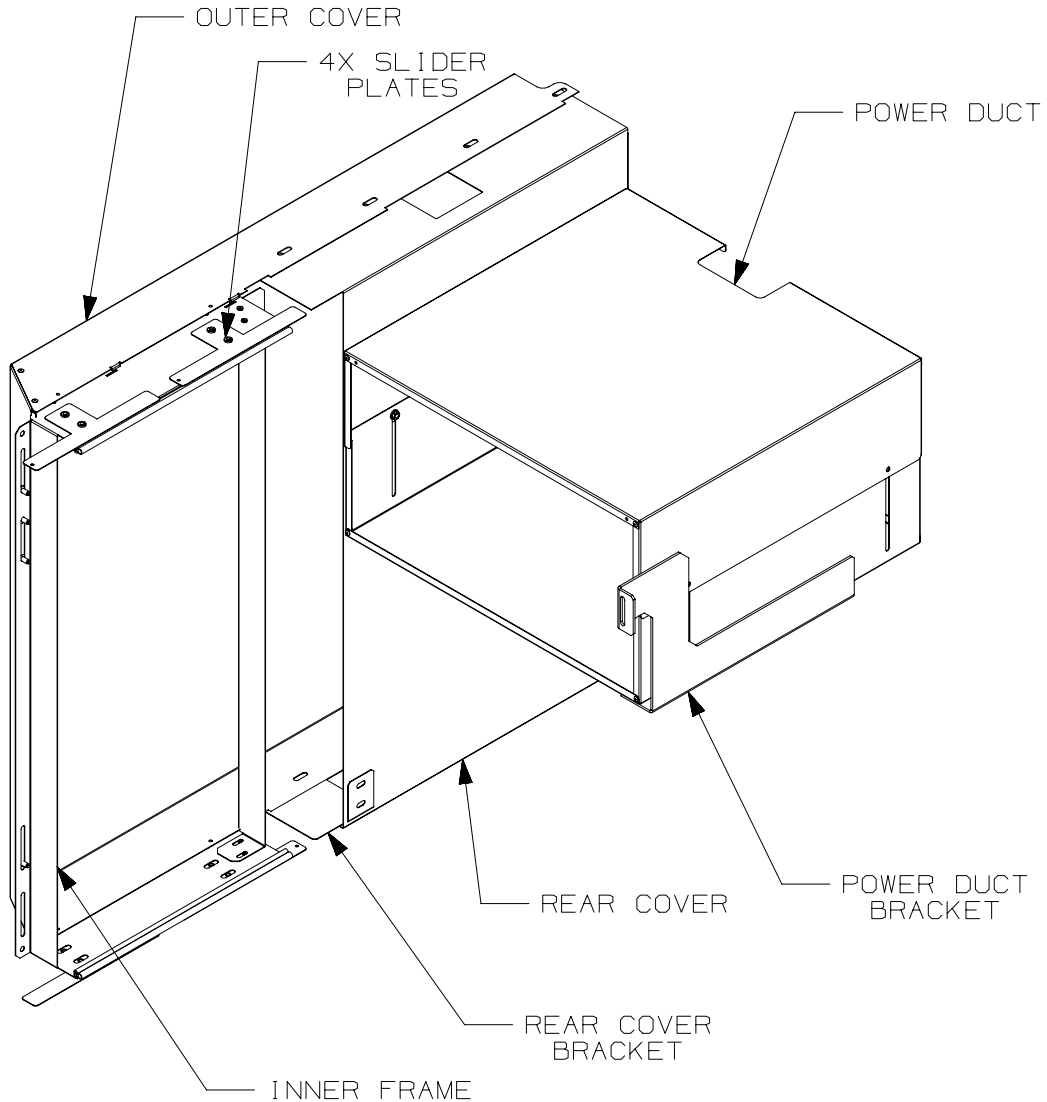


THIS COPY IS PROVIDED ON A RESTRICTED BASIS AND IS NOT TO BE USED IN ANY WAY DETRIMENTAL TO THE INTERESTS OF PANDUIT CORP.



PANDUIT PART NO.	WEIGHT
DERLCC6513A	12.76 Kg/EA 28.14 LBS/EA

NOTES:

- VISIT OUR ONLINE CATALOG AT WWW.PANDUIT.COM FOR A LIST OF CURRENT PARTS APPLICABLE FOR USE WITH THIS PRODUCT.
- PRIMARY DIMENSIONS ARE METRIC (mm). DIMENSIONS IN PARENTHESES ARE IN INCHES (IN).
- HIDDEN LINES REPRESENT SWITCH
- PARTS SUPPLIED:
 - 1 - INNER FRAME
 - 1 - OUTER COVER
 - 4 - SLIDER PLATES
 - 1 - HORIZONTAL STIFFENER
 - 1 - REAR COVER
 - 1 - REAR COVER BRACKET
 - 1 - CORNER BRACKET
 - 1 - POWER DUCT
 - 1 - POWER DUCT BRACKET
 - 1 - HARDWARE KIT
- INSTALLATION NOTE: FRONT TO BACK EQUIPMENT RAILS NEED TO BE 412.75 mm [16.25"] APART.
- FOR USE WITH 1070mm DEEP N-STYLE CABINETS.

PANDUIT N-TYPE EXHAUST DUCT FOR THE CISCO 6513 (DERLCC6513A)

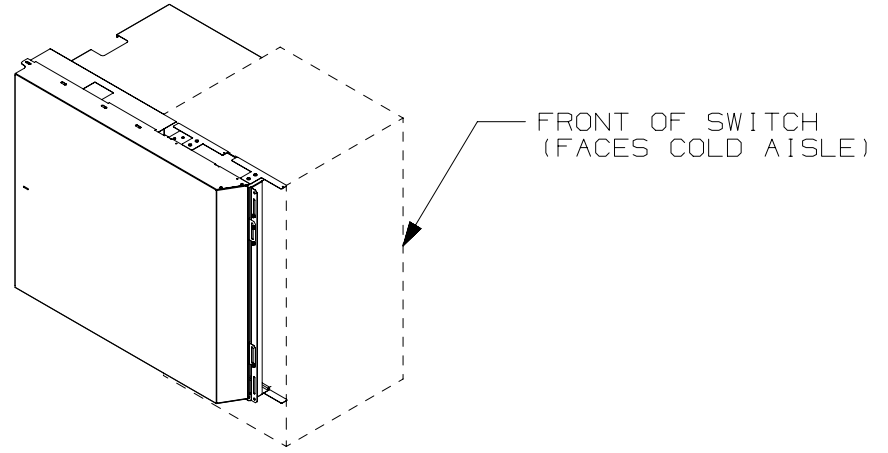
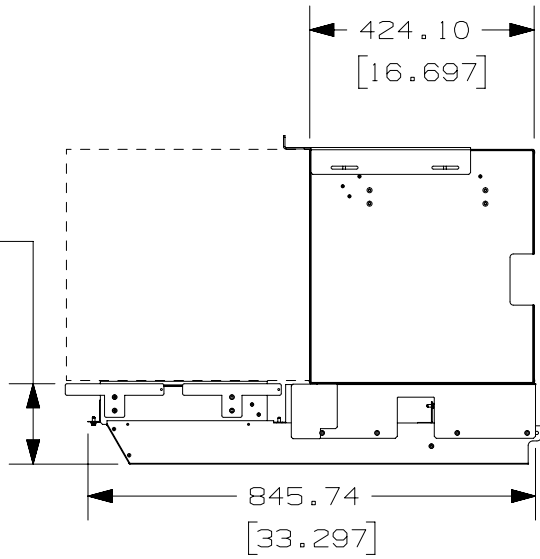
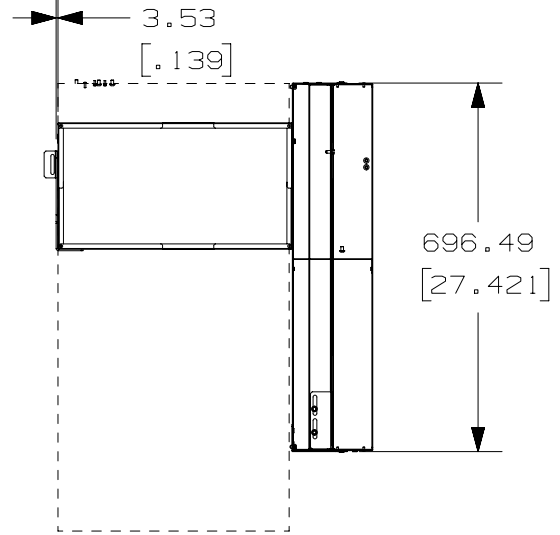
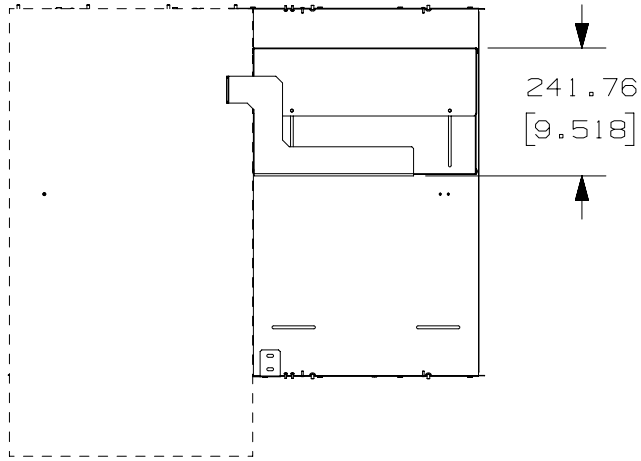
CUSTOMER DRAWING

ITEM REVISION NAME 12V295EZ/02		PANDUIT
DATASET FILE NAME 12V295EZ_DC/02B		
MATERIAL: N/A		
DRAWING NUMBER: 12V295EZ		DRAWING NUMBER: SHT 1 OF 3
DRAWN BY PJST	DATE 10/09/12	CHK LDR
SCALE N/A	SIZE A	

REV	DATE	BY	CHK	APR	DESCRIPTION	ECN
02B	4-22-14	PBS	<i>AA</i>		ADDED NOTE 6	V09000TL
02A	11/15/12	PJST			POWER DUCT BRACKET MODEL CHANGED.	12V295EZ
01A	10/09/12	PJST	LDR	MWH	RELEASED TO PRODUCTION	12V295EZ

D10100DA/12

THIS COPY IS PROVIDED ON A RESTRICTED BASIS AND IS NOT TO BE USED IN ANY WAY DETRIMENTAL TO THE INTERESTS OF PANDUIT CORP.



TITLE												
PANDUIT N-TYPE EXHAUST DUCT FOR THE CISCO 6513 (DERLCC6513A)												
CUSTOMER DRAWING												
ITEM REVISION NAME					12V295EZ/02							
DATASET FILE NAME					12V295EZ_DC/02B							
					PANDUIT							
					MATERIAL:							
					N/A							
					DRAWING NUMBER:							
					12V295EZ							
REV	DATE	BY	CHK	APR	DESCRIPTION	ECN	DRAWN BY	DATE	CHK	SCALE	SHT 2 OF 3	SIZE
02B	4-22-14	MDCA			SEE SHEET 1 OF 3 FOR REVISIONS	V09000TL	PJST	10/09/12	LDR	N/A		A
02A	11/15/12	PJST			POWER DUCT BRACKET MODEL CHANGED.	12V295EZ						
01A	10/09/12	PJST	LDR	MWH	RELEASED TO PRODUCTION	12V295EZ						

02B	4-22-14	MDCA			SEE SHEET 1 OF 3 FOR REVISIONS	V09000TL
02A	11/15/12	PJST			POWER DUCT BRACKET MODEL CHANGED.	12V295EZ
01A	10/09/12	PJST	LDR	MWH	RELEASED TO PRODUCTION	12V295EZ

D10100DA/12

2

1

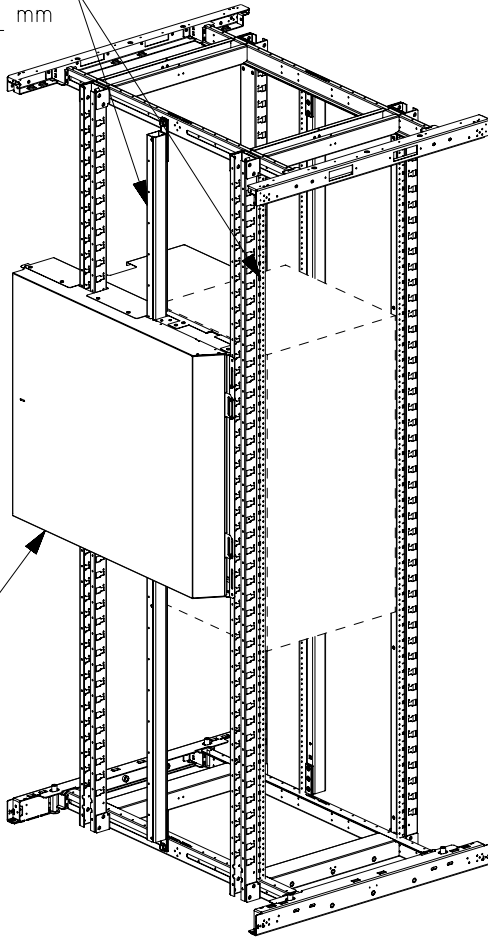
2

1

THIS COPY IS PROVIDED ON A RESTRICTED BASIS AND IS NOT TO BE USED IN ANY WAY DETRIMENTAL TO THE INTERESTS OF PANDUIT CORP.

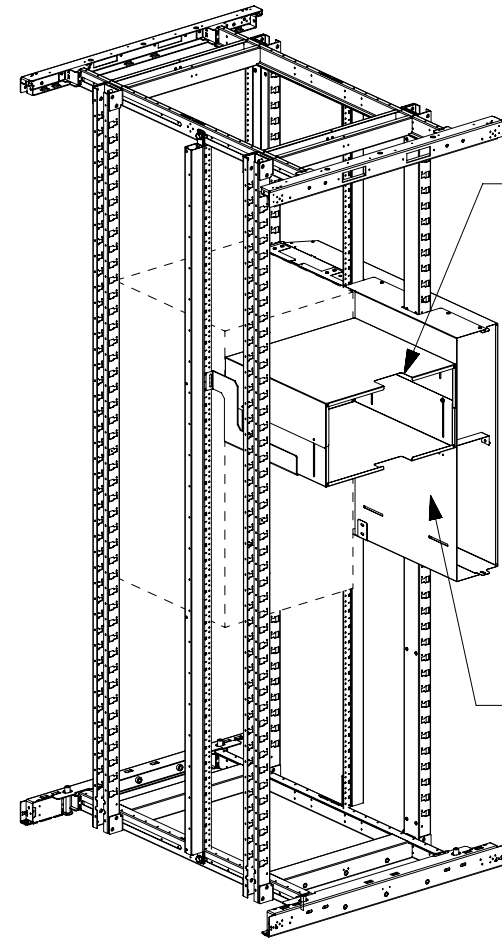
EQUIPMENT RAILS
SHOULD BE 412.75 mm
(16.25") APART

OUTER COVER



FRONT OF CABINET
(FACES COLD AISLE)

NOTE:
FOR CABINETS ON CASTERS UNIT CAN NOT BE
INSTALLED IN RU'S 1-3.



POWER DUCT

REAR COVER

REAR OF CABINET
(FACES HOT AISLE)

TITLE										PANDUIT N-TYPE EXHAUST DUCT FOR THE CISCO 6513 (DERLCC6513A)	
ITEM REVISION NAME										12V295EZ/02	
DATASET FILE NAME										12V295EZ_DC/02B	
MATERIAL:										N/A	
DRAWING NUMBER:										12V295EZ	
DRAWN BY	DATE	CHK	SCALE	SHT 3 OF 3						SIZE	
PJST	10/09/12	LDR	N/A							A	

REV	DATE	BY	CHK	APR	DESCRIPTION	ECN
02B	4-22-14	MDCA			SEE SHEET 1 OF 3 FOR REVISIONS	V09000TL
02A	11/15/12	PJST			POWER DUCT BRACKET MODEL CHANGED.	12V295EZ
01A	10/09/12	PJST	LDR	MWH	RELEASED TO PRODUCTION	12V295EZ

D10100DA/12