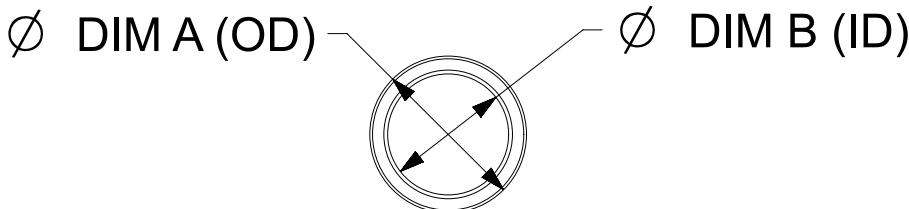


THIS COPY IS PROVIDED ON A RESTRICTED BASIS AND IS NOT TO BE USED IN ANY WAY DETRIMENTAL TO THE INTERESTS OF PANDUIT CORP.

Material: Nylon 6				
SLIT PART NUMBERS	NON-SLIT PART NUMBERS	DIM A Target (OD)	DIM B Target (ID)	Wall Thickness
CLT25N-*	CLTS25N-*	0.378 [9.60]	0.281 [7.14]	.007-.023 [0.18-0.51]
CLT35N-*	CLTS35N-*	0.417 [10.59]	0.323 [8.20]	
CLT38N-*	CLTS38N-*	0.535 [13.59]	0.421 [10.69]	
CLT50N-*	CLTS50N-*	0.675 [17.15]	0.518 [13.16]	
CLT62N-*	CLTS62N-*	0.815 [20.70]	0.665 [16.89]	
CLT75N-*	CLTS75N-*	0.933 [23.70]	0.762 [19.35]	
CLT100N-*	CLTS100N-*	1.114 [28.30]	0.917 [23.29]	.008-.031 [0.20-0.79]
CLT125N-*	CLTS125N-*	1.524 [38.71]	1.303 [33.10]	
CLT150N-*	CLTS150N-*	1.850 [47.00]	1.580 [40.00]	
CLT188N-*	NA	2.157 [54.79]	1.870 [47.50]	

Material: Polyethylene				
SLIT PART NUMBERS	NON-SLIT PART NUMBERS	DIM A Target (OD)	DIM B Target (ID)	Wall Thickness
CLT25F-*	CLTS25F-*	0.378 [9.60]	0.281 [7.14]	.007-.023 [0.18-0.51]
CLT35F-*	CLTS35F-*	0.417 [10.59]	0.323 [8.20]	
CLT35F-C3	CLTS35F-C3	0.496 [12.60]	0.344 [8.73]	
CLT38F-*	CLTS38F-*	0.535 [13.59]	0.421 [10.69]	
CLT50F-*	CLTS50F-*	0.675 [17.15]	0.518 [13.16]	
CLT62F-*	CLTS62F-*	0.815 [20.70]	0.665 [16.89]	
CLT75F-*	CLTS75F-*	0.933 [23.70]	0.762 [19.35]	.008-.031 [0.20-0.79]
CLT100F-*	CLTS100F-*	1.114 [28.30]	0.917 [23.29]	
CLT125F-*	CLTS125F-*	1.524 [38.71]	1.303 [33.10]	
CLT150F-*	CLTS150F-*	1.850 [47.00]	1.580 [40.00]	
CLT188F-*	NA	2.157 [54.79]	1.870 [47.50]	

12A



\* NOTES:

- 1. SEE [www.panduit.com](http://www.panduit.com) FOR PART NUMBER SUFFIX DESIGNATION FOR PACKAGE SIZE, PART MATERIAL AND PART COLOR.
- 2. FOR ROLL SIZES LARGER THAN 10 FEET, SPLICES MAY OCCUR.
- 3. SLIT PART NUMBERS HAVE ONE CONTINUOUS SLIT ALONG ENTIRE LENGTH TUBING.

TITLE <b>Slit &amp; Non-slit Corrugated Loom Tubing</b>									
CUSTOMER DRAWING									
ITEM REVISION NAME G03597BN/02									
DATASET FILE NAME G03597BN_DC/12A GB0222BP_DC CLT CUST DWG					MATERIAL: <b>Nylon 6 or Polyethylene</b>				
UNLESS OTHERWISE SPECIFIED, DIMENSIONAL TOLERANCES ARE: IN [ mm ]					DRAWING NUMBER: <b>GB0222BP</b>				
.X ±		.XXX ± .050 (1.27)		THIRD ANGLE PROJECTION					
.XX ±		ANGLES ±							
DRAWN BY CPE	DATE 9-18-97	CHK VJS	SCALE NONE	SHT 1 OF 1	A				

REV	DATE	BY	CHK	APR	DESCRIPTION	ECN
12A	1/17/2023	RVU	DAPE	MSAD	ADDED CLT35F-C3 AND CLTS35F-C30, DIM A-0.496 [12.60], DIM B-0.344 [8.73] TO TABLE, Material (Polyethylene).	GAECN06654
11	4/2/2020	RVU	DJW	JHAC	REBUILD MODEL AND REDRAWING DRAWING. ADDED NEW TWO TABLE TO INCLUDE SLIT AND NON-SLIT. CHANGED ALL A DIM AND B DIM MEASUREMENTS. UPDATED TITLE AND NOTES.	GAECN05626
10	02.10.15	BDK	VJS	RGR0	E. ADDED DUAL RIB PROFILE AND DETAIL F. REMOVED DENSITY FROM POLYETHYLENE	GB0222BP
09	5/09/14	BWG	VJS	JADE	REVISED DIMENSIONS AND WEIGHTS, REMOVED PREVIOUS REVISION BALLONS FOR CLARITY AND UPDATED TITLE BORDER, ADDED * TO PART NUMBERS, REVISED NOTE 1.	GB0222BP/09