

QuickNet™ SD Switch Harnesses with Category 6 28AWG Cabling

QuickNet™ SD Switch Harnesses bring unprecedented levels of installation speed, consistency, and clean aesthetics to the cabling in network racks and IDFs/MDFs. Built using Panduit's Category 6 Small Diameter cable, QuickNet™ SD Switch Harnesses have a small bundle size and are highly flexible for excellent routability in network rack configurations.

Two basic types of QuickNet™ SD Switch Harnesses meet the needs of common switch-to-panel cabling approaches. Harnesses are readily available in popular lengths and configurations, and can also be ordered in a range of customer-specified lengths and alternate configurations.

For quick and easy switch port replication, 12-cable Switch Port Harnesses are available to provide the same vertically numbered port layout at the patch panel as on the switch ports.



**12-Cable Switch Patching Harness
(Plugs at Panel End)**



**12-Cable Switch Port Harness
(Jacks at Panel End)**

Key Features

Benefits

Quick install capability	Reduces network rack cabling installation time by 85% or more compared to loose cord cabling
Factory-dressed, labeled, and pre-bundled cabling	Ensures cleanly dressed IDF/MDF cabling and facilitates consistent cabling standard across regional and global sites
Small bundle size	Allows increased airflow and reduced cable manager size
Lightweight and highly flexible	Enables easy and quick routing within tight spaces
Multiple standard configurations	Harnesses are readily available for common switch-to-panel cabling approaches, cable bundle counts, and length requirements

Application Information



Network Rack (IDF/MDF) Example

QuickNet™ SD Switch Harnesses provide an ideal solution in network racks (or IDFs/MDFs) where they replace the loose cord cabling between switches and patch panels. Depending on the type of cord connection used at the patch panel end, two basic types of harnesses are available:

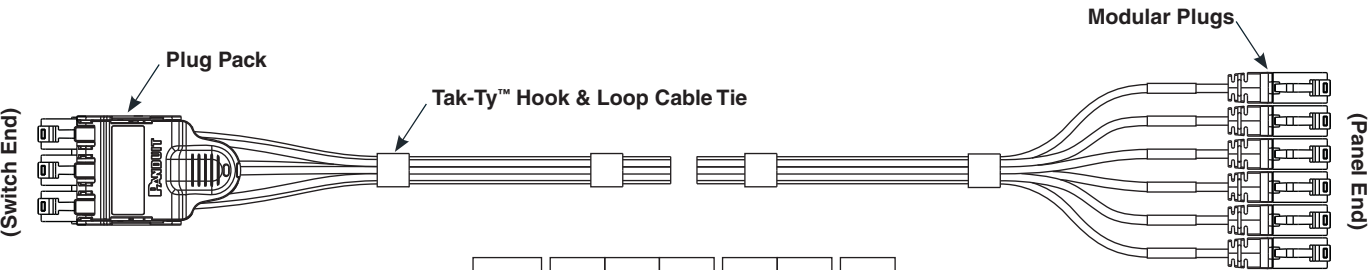
Switch Port Harnesses provide a plug-to-jack connection – also known as “switch port replication” – between switch ports and the patch panels, and replace individual equipment cords. On the panel end of the harness the modular jacks (either loose or contained in a cassette) are inserted into the patch panel from behind.

Note: Cassette-ended switch port harnesses (all QPC part numbers) require the use of QuickNet™ Patch Panels.

Switch Patching Harnesses provide a “plug-to-plug” connection between the switch ports and patch panel ports, and replace individual patch cords. The panel end of the harness has plugs which are inserted into the front of the patch panel.

QuickNet™ SD Switch Harnesses

Switch Patching Harnesses (Plug-To-Plug Type)



Example:

QPP	S	D	W	A	L	1M
1	2	3	4	5	6	7

Part Number Example – QPPSDWAL1M is a 1-metre QuickNet™ SD Switch Patching Harness with Category 6 UTP 28AWG CM/LSZH white cable, a 6-position black plug pack on one end, and modular plugs on the other end.

Note- Standard part numbers are listed on the back page. For all other part numbers an “N” is required at the end of the part number.

1 – QuickNet™ Switch Harness Type
QPP = QuickNet™ Plug-To-Plug

2 – Performance Level
S = Category 6 SD UTP (28 AWG)

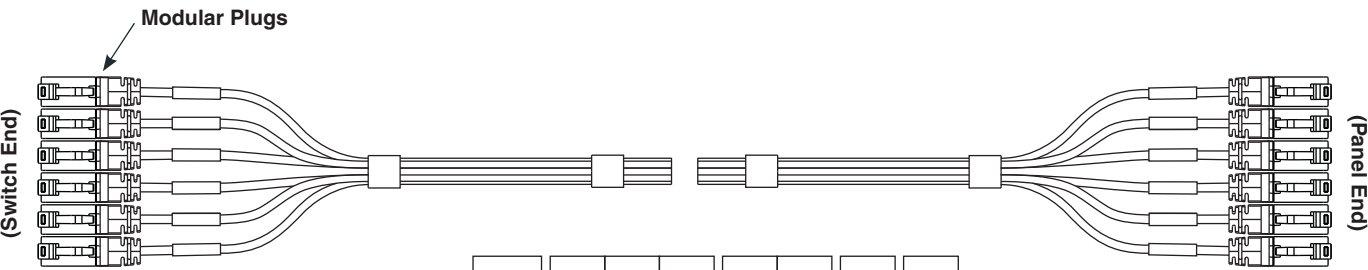
3 – Flame/Smoke Rating
D = Dual rated CM and LSZH

4 – Cable Color*
B = Blue
W = White

5 – Switch End Configuration
A = 6-position plug pack
B = 12-position plug pack
D = 8-position plug pack
R = 6-position recessed plug pack
6 = 6 cables (loose plug)
8 = 8 cables (loose plug)
W = 12 cables (loose plug)

6 – Plug Pack Color
B = Blue
W = White
R = Red
L = Black
S = Silver (recessed plug pack only)
X = None (loose plug)

7 – Assembly Length*
1M = 1 metre
2M = 2 metres
3M = 3 metres
4M = 4 metres
5M = 5 metres
8 – N = Non-Standard Part
(Required only for Non-Standard Parts)



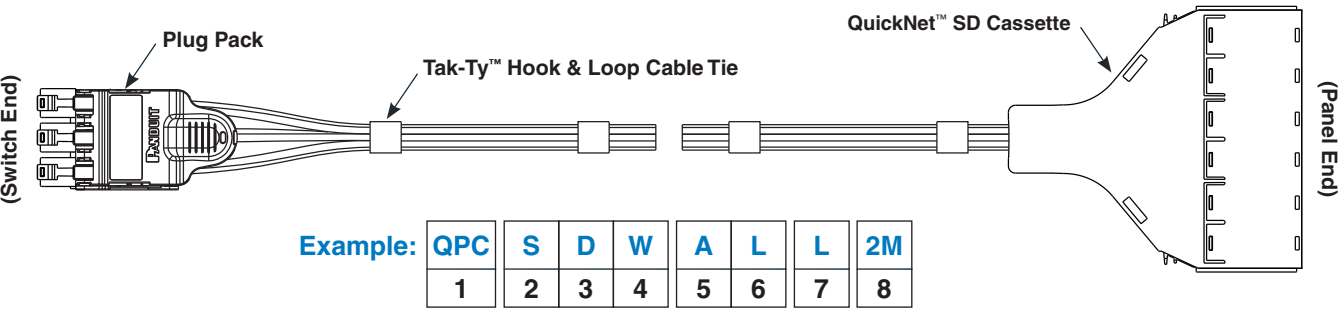
Example:

QPP	S	D	B	6	X	1M	N
1	2	3	4	5	6	7	8

Part Number Example – QPPSDB6X1N is a 1-metre QuickNet™ SD Switch Patching Harness with Category 6 UTP 28AWG CM/LSZH blue cable and modular plugs on both ends.

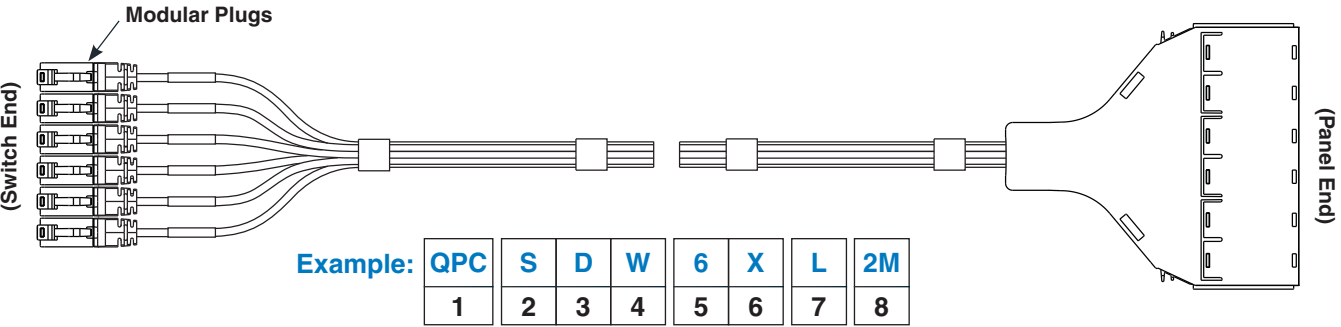
*For other harness lengths, cable colors, or custom labeling, contact Panduit Customer Service.

Switch Port Harnesses (Plug-to-Jack Type)



Part Number Example – QPCSDWALL2M is a 2-metre QuickNet™ SD Switch Port Harness with Category 6 UTP 28AWG CM/LSZH white cable, a 6-position black plug pack on one end, and cassette with black modular jacks on the other end.

Note- Standard part numbers are listed on the back page. For all other part numbers an “N” is required at the end of the part number.



Part Number Example – QPCSDW6XL2M is a 2-metre QuickNet™ SD Switch Port Harness with Category 6 UTP 28AWG CM/LSZH white cable, modular plugs on one end, and cassette with black modular jacks on the other end.

- 1 – QuickNet™ Switch Harness Type**

QPC = QuickNet™ Plug-To-Cassette
QPJ = QuickNet™ Plug-To-Jack

2 – Performance Level

S = Category 6 SD UTP (28 AWG)

3 – Flame/Smoke Rating

D = Dual rated CM and LSZH

4 – Cable Color*

B = Blue
W = White
- 5 – Switch End Configuration**

A = 6-position plug pack
B = 12-position plug pack
D = 8-position plug pack
R = 6-position recessed plug pack
6 = 6 cables (loose plug)
8 = 8 cables (loose plug)
W = 12 cables (loose plug)

6 – Plug Pack Color

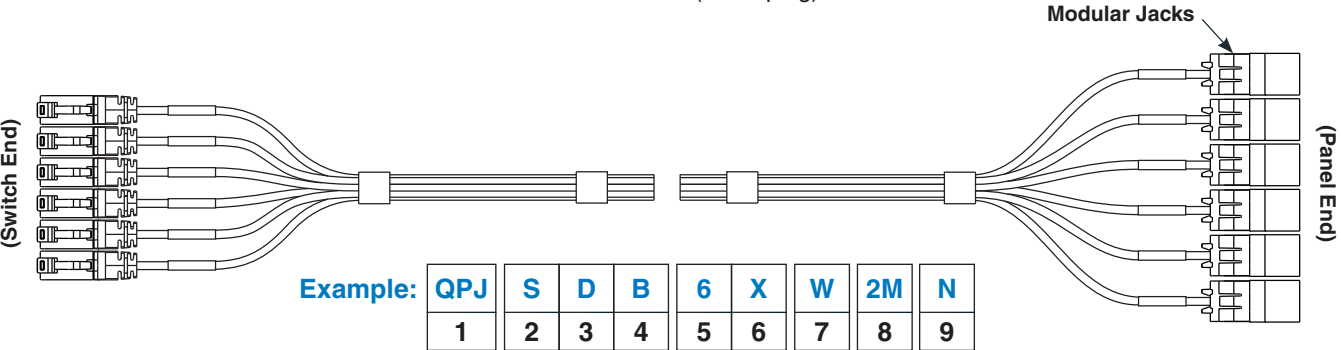
B = Blue
W = White
R = Red
L = Black
S = Silver (recessed plug pack only)
X = None (loose plug)
- 7 – Jack Color***

B = Blue
W = White
R = Red
L = Black

8 – Assembly Length*

2M = 2 metres
3M = 3 metres
4M = 4 metres
5M = 5 metres
6M = 6 metres

9 – N = Non-Standard Part
(Required only for Non-Standard Parts)



Part Number Example – QPJSD6XW2N is a 2-metre QuickNet™ SD Switch Port Harness with Category 6 UTP 28AWG CM/LSZH blue cable, modular plugs on one end, and white modular jacks on the other end.

*For other harness lengths, cable colors, jack colors, or custom labeling, contact Panduit Customer Service.

QuickNet™ SD Switch Harnesses

Note: All standard parts below have white cable and (if applicable) blue plug pack and/or black modular jacks.

Standard Parts – Switch Patching Harnesses (Plug-To-Plug Type)



Plug Pack to Loose Plug

Length	6-Cable With Plug Pack	6-Cable With Recessed Plug Pack	8-Cable With Plug Pack	12-Cable With Plug Pack
1 metre	QPPSDWAL1M	QPPSDWRS1M	QPPSDWDL1M	QPPSDWBL1M
2 metres	QPPSDWAL2M	QPPSDWRS2M	QPPSDWDL2M	QPPSDWBL2M
3 metres	QPPSDWAL3M	QPPSDWRS3M	QPPSDWDL3M	QPPSDWBL3M
4 metres	QPPSDWAL4M	QPPSDWRS4M	QPPSDWDL4M	QPPSDWBL4M
5 metres	QPPSDWAL5M	QPPSDWRS5M	QPPSDWDL5M	QPPSDWBL5M

Standard Parts – Switch Port Harnesses (Plug-to-Jack Type)



Plug Pack to Cassette

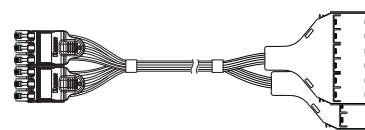
Length	6-Cable With Plug Pack	6-Cable With Recessed Plug Pack	12-Cable with Plug Pack
2 metres	QPCSDWALL2M	QPCSDWRS12M	QPCSDWBLL2M
3 metres	QPCSDWALL3M	QPCSDWRS13M	QPCSDWBLL3M
4 metres	QPCSDWALL4M	QPCSDWRS14M	QPCSDWBLL4M
5 metres	QPCSDWALL5M	QPCSDWRS15M	QPCSDWBLL5M
6 metres	QPCSDWALL6M	QPCSDWRS16M	QPCSDWBLL6M



Loose Plug to Cassette

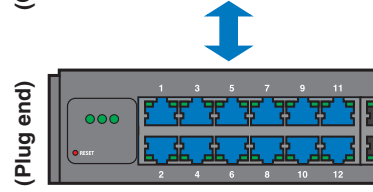
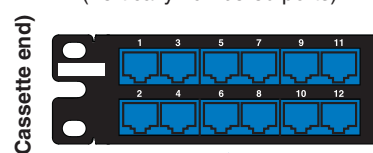
Length	6-Cable With Plug Pack	12-Cable With Loose Plug
2 metres	QPCSDW6XL2M	QPCSDWWXL2M
3 metres	QPCSDW6XL3M	QPCSDWWXL3M
4 metres	QPCSDW6XL4M	QPCSDWWXL4M
5 metres	QPCSDW6XL5M	QPCSDWWXL5M
6 metres	QPCSDW6XL6M	QPCSDWWXL6M

Switch Port Replication



For matching vertical switch port layout at the patch panel end, use 12-cable QPC series Switch Port Harnesses and QuickNet™ Vertically Numbered Patch Panels.

QuickNet™ Patch Panel (Vertically numbered ports)



Switch (Vertically numbered ports)

WORLDWIDE SUBSIDIARIES AND SALES OFFICES

PANDUIT CANADA
Markham, Ontario
cs-cdn@panduit.com
Phone: 800.777.3300

PANDUIT EUROPE LTD.
London, UK
cs-emea@panduit.com
Phone: 44.20.8601.7200

PANDUIT SINGAPORE PTE. LTD.
Republic of Singapore
cs-ap@panduit.com
Phone: 65.6305.7575

PANDUIT JAPAN
Tokyo, Japan
cs-japan@panduit.com
Phone: 81.3.6863.6000

PANDUIT LATIN AMERICA
Guadalajara, Mexico
cs-la@panduit.com
Phone: 52.33.3777.6000

PANDUIT AUSTRALIA PTY. LTD.
Victoria, Australia
cs-aus@panduit.com
Phone: 61.3.9794.9020

For a copy of Panduit product warranties, log on to www.panduit.com/warranty

For more information

Visit us at www.panduit.com

Contact Customer Service by email: cs@panduit.com
or by phone: 800.777.3300

PANDUIT™

©2014 Panduit Corp.
ALL RIGHTS RESERVED.
COCB21--WW-UKE
4/2014