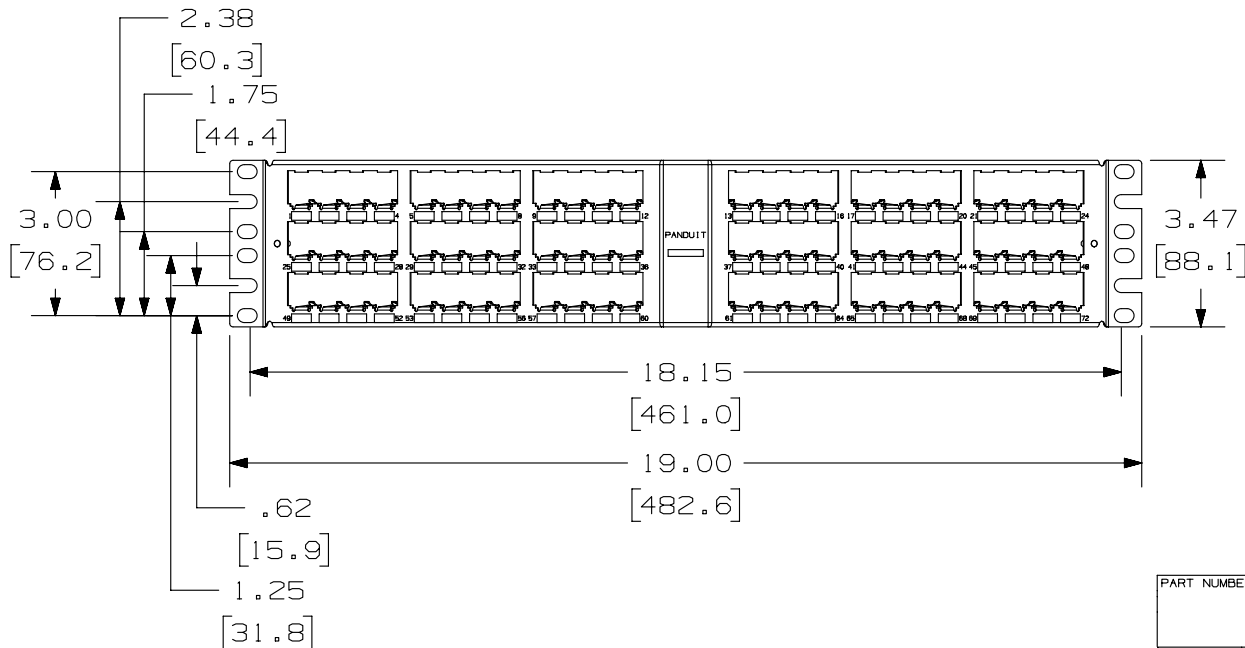
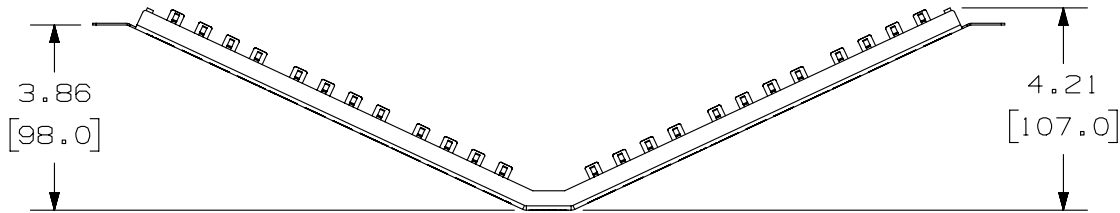


THIS COPY IS PROVIDED ON A RESTRICTED BASIS AND IS NOT TO BE USED IN ANY WAY DETRIMENTAL TO THE INTERESTS OF PANDUIT CORP.



PANDUIT P/N

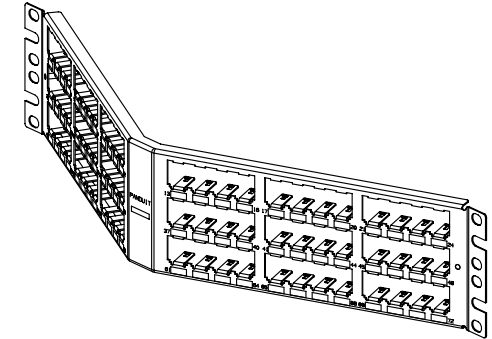
WEIGHT

CPA72BLY

.99 LB/EACH PC  
(451.3 g/EACH PC)

NOTES:

1. SEE CURRENT CATALOG FOR VARIOUS APPLICATIONS WITH THIS WIRING SYSTEM.
2. THE PATCH PANEL IS DESIGNED FOR MOUNTING TO 19" UNIVERSAL RACKS.
3. PACKAGE CONTENTS:
  - (1) -72 PORT STAMPING
  - (1) -SCREW KIT (INCLUDES FOUR #12-24 SCREWS AND 4 LOCK WASHERS)
  - (1) -SCREW KIT (INCLUDES FOUR M6 SCREWS)
  - (1) -REMOVAL TOOL (CPT)
4. PATCH PANELS ACCEPT SNAP-IN MINI-COM MODULES.
5. DIMENSIONS IN [ ] ARE IN METRIC.



PART NUMBER

CPA72BLY

TITLE

MINI-COM 72 PORT ANGLED ALL METAL MODULAR  
PATCH PANEL

CUSTOMER DRAWING

ITEM REVISION NAME

M02479CT/01

DATASET FILE NAME

M02479CT\_DC73/00B

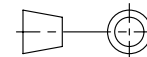
UNLESS OTHERWISE SPECIFIED,  
DIMENSIONAL TOLERANCES ARE: IN [ mm ]

.X ±

.XXX ± .010 [ .3 ]

.XX ± .03 [ .8 ]

ANGLES ±



THIRD ANGLE  
PROJECTION

MATERIAL:

20 GAGE STAINLESS STEEL

DRAWING NUMBER:

02479-073

DRAWN BY

JSP

DATE

3-11-06

CHK

MJD

SCALE

NONE

SHT 1 OF 1

SIZE

A

REV	DATE	BY	CHK	APR	DESCRIPTION	ECN
1	5/7/14	JSP	REFR	MMR	A. REVISED DRAWING TITLE BLOCK.	02479-073
R	3-11-06	JSP	MJD	MJD	RELEASED TO PRODUCTION	02479-073

**PANDUIT**