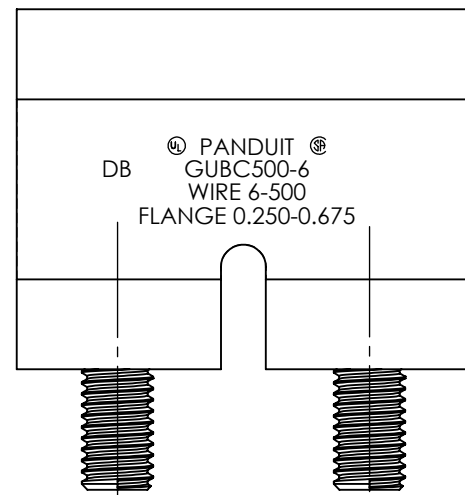
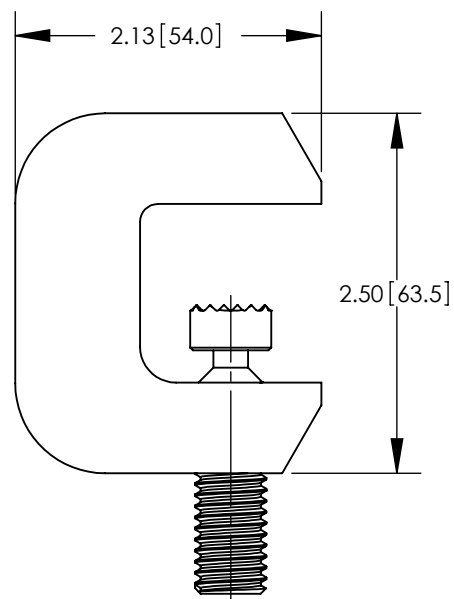
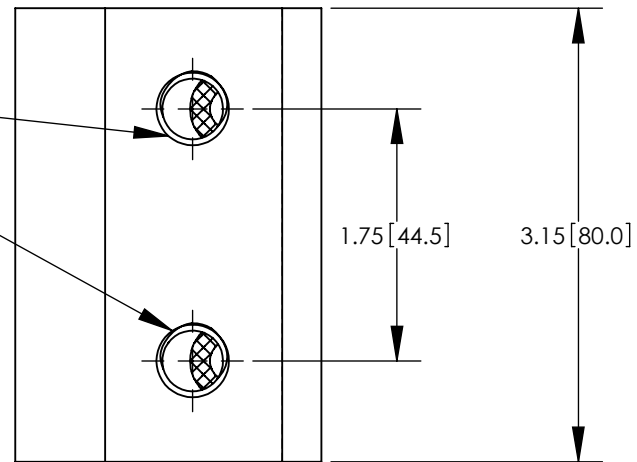


THIS COPY IS PROVIDED ON A RESTRICTED BASIS AND IS NOT TO BE USED IN ANY WAY DETRIMENTAL TO THE INTERESTS OF PANDUIT CORP.

NOTES

1. DIMENSIONS IN PARENTHESIS ARE MILLIMETERS.
2. FITS WIDE RANGE OF STANDARD (ANGLED) AND WIDE FLANGE (PARALLEL) STRUCTURAL STEEL BEAMS
3. PROVIDES MOUNTING PAD SUITABLE FOR 2 HOLE COMPRESSION LUG.
4. UL 467 LISTED AND CSA 22.2 CERTIFIED FOR GROUNDING & BONDING SUITABLE FOR DIRECT BURIAL IN EARTH OR CONCRETE.
5. PRE-APPLIED ANTIOXIDANT COMPOUND ENSURES A HIGH QUALITY MECHANICAL AND ELECTRICAL BOND, SPEEDING INSTALLATION.
6. HARDWARE KIT (GLMHK) SOLD SEPERATLEY FOR MOUNTING COMPRESSION LUG TO BEAM CLAMP
7. MEETS IEEE STD 837-2002.

1/2-13 THREAD
- FOR USE WITH 1/2" STUD HOLE, 1-3/4" SPACING,
2 HOLE COMPRESSION LUGS



PANDUIT PART NUMBER	COPPER CONDUCTOR SIZE RANGE AWG [mm]	FLANGE THICKNESS IN [mm]	THREAD SIZE FOR LUG ATTACHMENT	HEX SIZE	STD. PKG QTY.
GUBC500-6TP	#6 AWG - 500 kcmil [16-240 SQ. mm]	.250-.675 [6.3-17.1]	1/2-13	1/4	1

REV	DATE	BY	CHK	APR	DESCRIPTION	ECN
01	11/17	JHNU	JHNU	RGB	REVISED MARKING ON PART: 6-500 WAS 6-50	00158NBN-DC
00	10/17	JHNU	JHNU	RGB	DRAWING RELEASED	00158NBN-DC

TITLE UNIVERSAL BEAM GROUNDING CLAMP, TIN PLATED (GUBC500-6TP) CUSTOMER DRAWING			
ITEM REVISION NAME 00158NBN/01		DATASET FILE NAME 00158NBN-DC/01.SLDDRW	
UNLESS OTHERWISE SPECIFIED, DIMENSIONAL TOLERANCES ARE: IN [mm] .X ± .XXX ± .XX ± .03 [6] ANGLES ±			
DRAWN BY JHNU		DATE 10/17	CHK RGB
SCALE N/A		THIRD ANGLE PROJECTION	
SHEET 1 OF 1			SIZE B

PANDUIT

MATERIAL
HIGH CONDUCTIVITY COPPER,
TIN PLATED

DRAWING NUMBER
00158NBN-DC