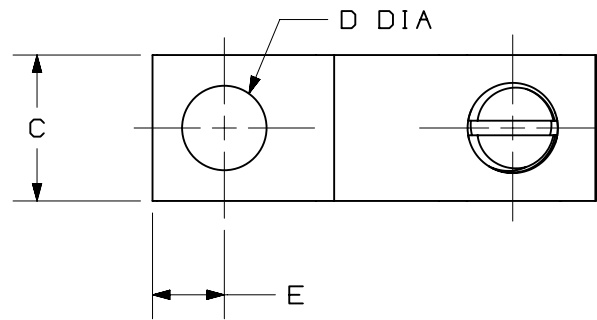
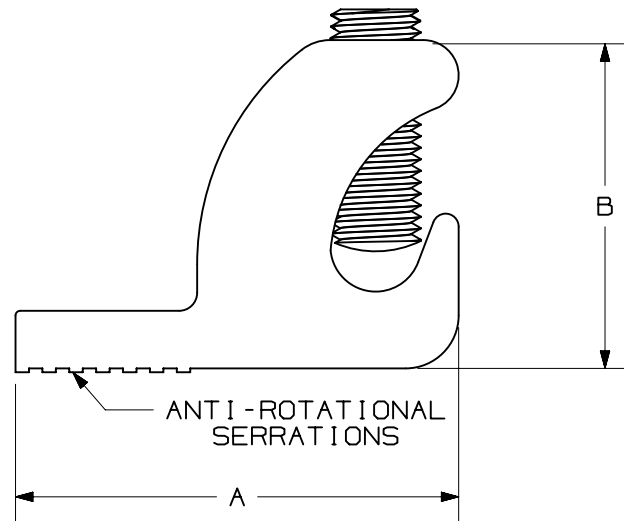


THIS COPY IS PROVIDED ON A RESTRICTED BASIS AND IS NOT TO BE USED IN ANY WAY DETRIMENTAL TO THE INTERESTS OF PANDUIT CORP.



NOTES:

1. MATERIAL: SEE TABLE
2. cULus LISTED FOR POWER AND GROUNDING APPLICATIONS
3. DUAL RATED FOR USE WITH COPPER OR ALUMINUM STRANDED CODE CONDUCTOR (LIAS250-56-X ONLY)
4. PARTS ARE RoHS COMPLIANT
5. USE OF OXIDE INHIBITING JOINT COMPOUND LIKE PANDUIT CMP-100 RECOMMENDED.
6. DIMENSIONS IN BRACKETS ARE MILLIMETERS



PART NUMBER	MATERIAL	WIRE RANGE	SCREW TYPE	TIGHTENING TORQUE	PACKAGING QUANTITY	POWER UL486A-486B 600V RATING 90° C	GROUNDING UL467 YES DIRECT BURIAL RATED	DIMENSIONS - IN [mm] ±.02 [.5]				
								A	B	C	STUD HOLE D DIA	E
LICC4-22-TL	COPPER	#14 - #4 CU AWG	1/4-28 SLOTTED STAINLESS STEEL	#14-#10 = 20 IN-LB #8 = 25 IN-LB #6-#4 = 35 IN-LB	250	600V RATING 90° C	YES DIRECT BURIAL RATED	1.06	.75	.39	#12	.19
LICC4-22TP-TL	COPPER, TIN PLATED				250			[27.0]	[19.0]	[9.9]	.22 [5.6]	[4.8]
LIAS250-56-X	ALUMINUM, TIN PLATED	#6- #250 kcmil CU/AL AWG	1/2-18 W/ 1/4 HEX KEY STEEL, ZINC PLATED	200 IN-LB	10	600V RATING 90° C AL9CU	YES NOT DIRECT BURIAL RATED	2.20 [55.9]	1.70 [43.2]	.80 [20.3]	5/16" .33 [8.4]	.40 [10.2]

PART NUMBER		SEE TABLE	
TITLE			
LIAC, LICC Lay-In Lug (Reditek Phase 2) Customer Drawing			
CUSTOMER DRAWING			
ITEM REVISION NAME		03468NBE/00	
DATASET FILE NAME		03468NBE-DC/00	
		THIRD ANGLE PROJECTION	
MATERIAL		SEE TABLE	
DRAWING NUMBER		03468NBE - DC	
DRAWN BY	DATE	CHK	SCALE
JHNU	10-20-23	JHNU	NONE
SHEET 1 OF 1		B	

REV	DATE	BY	CHK	APR	DESCRIPTION	ECN
00	10-20-23	JHNU	JHNU	MRWA	DRAWING RELEASED	135288

B

B

A

A

B-SIZE CUSTOMER