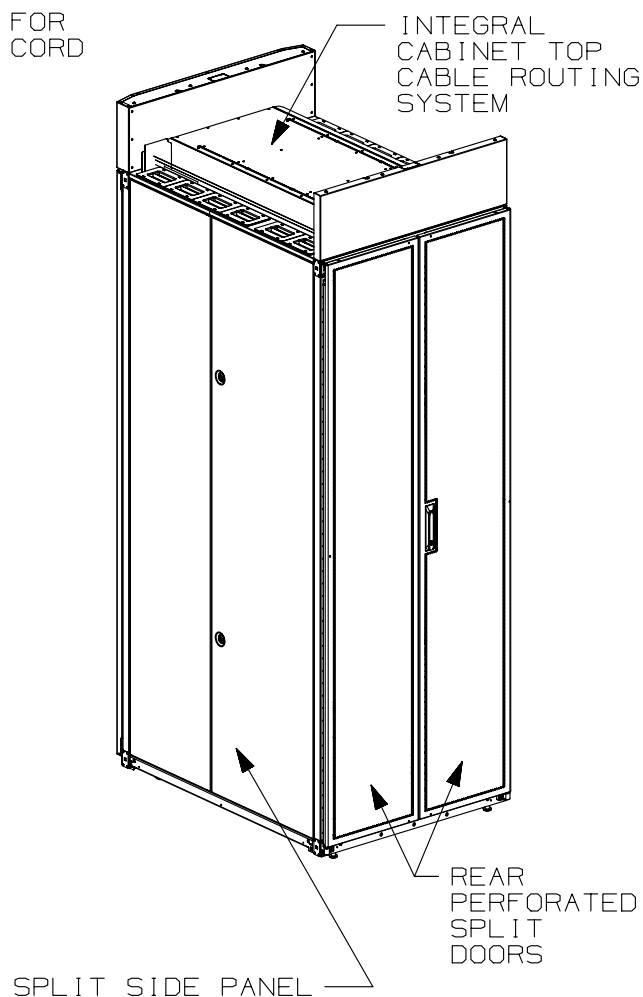
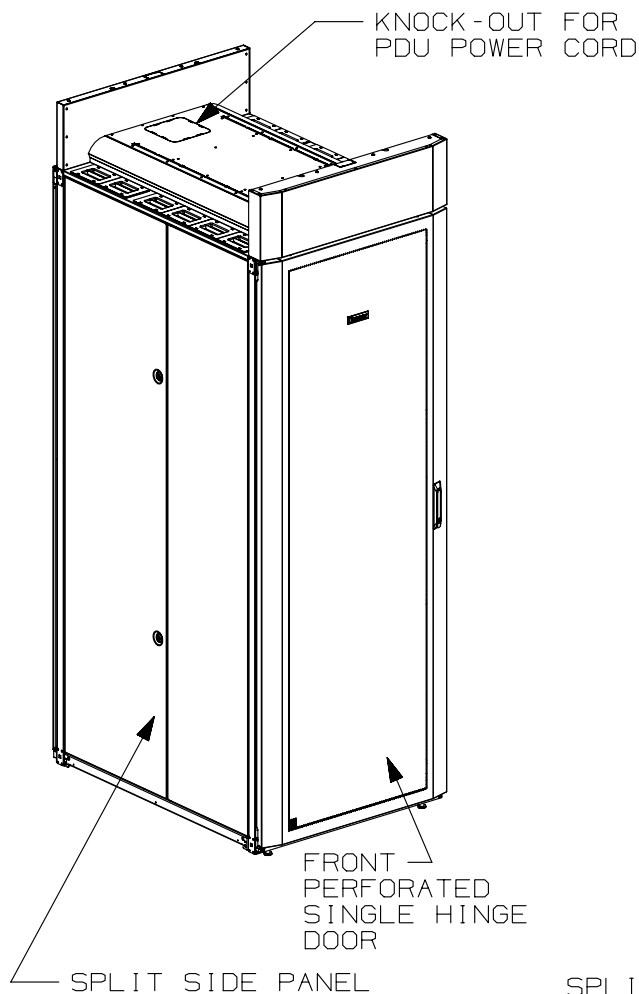


THIS COPY IS PROVIDED ON A RESTRICTED BASIS AND IS NOT TO BE USED IN ANY WAY DETRIMENTAL TO THE INTERESTS OF PANDUIT CORP.



1. VISIT OUR ON-LINE CATALOG AT WWW.PANDUIT.COM FOR A LIST OF CURRENT PARTS APPLICABLE FOR USE WITH THIS PRODUCT.
2. PRIMARY DIMENSIONS ARE IN MILLIMETERS.
3. RAIL ADJUSTMENTS MEASUREMENTS ARE TAKEN FROM THE FRONT FACE OF EACH EQUIPMENT RAIL. INDEPENDENT ADJUSTABLE REAR EQUIPMENT MOUNTING RAILS (EIA) ADJUST FROM 141mm [5.5in] TO 437mm [17.2in] AND FROM 526mm [20.7in] TO 933mm [36.7in] WITH PDU BRACKETS AND CABLE MANAGEMENT FINGERS IN PLACE.
4. CAN BE USED WITH ANY 19" EIA STANDARD COMPONENT IN ADDITION TO ALL PANDUIT HORIZONTAL CABLE MANAGEMENT AND PATCH PANEL PRODUCTS.
5. EIA UNIVERSAL STANDARD HOLE PROGRESSION ON EQUIPMENT RAILS
15.88mm [.625in], 15.88mm [.625in], 12.70mm [.5in], 15.88mm [.625in], 15.88mm [.625in], 12.7mm [.5in]...ETC.
6. PARTS SUPPLIED:
-BASE CABINET
-FRONT PERFORATED SINGLE HINGE DOOR (SEE CHART ON SHEET 2)
-REAR PERFORATED SPLIT DOOR (SEE CHART ON SHEET 2)
-SPLIT SIDE PANELS (SEE SHEET 2)
-EQUIPMENT RAILS FRONT & REAR (SEE CHART ON SHEET 2)
-PDU BRACKETS (SEE CHART ON SHEET 2)
-CASTERS (SEE CHART ON SHEET 2)
-CABINET HARDWARE KIT
-INSTRUCTION SHEET
7. RACK UNIT SPACING NUMERALS ARE CLEARLY PRINTED ON EQUIPMENT MOUNTING RAILS.
8. FULLY BONDED STRUCTURE WHEN ASSEMBLED PER INSTRUCTIONS.
9. STATIC LOAD RATING. 1360 Kg (3000 LBS)
10. ROLLING LOAD RATING. 1133 Kg (2500 LBS)
11. SINGLE POINT GROUND LOCATIONS AT TOP AND BOTTOM OF CABINET.
12. ALL CABINET RAILS ARE INSTALLED NUMBERS UP.
13. MAXIMUM EQUIPMENT DEPTH, 959mm [37.75].


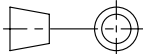
01A	12-02-14	MDCA	ADP	TCN	FLOOR MOUNT DIMENSIONS UPDATED	V09000BX
00A	5-15-13	PBS	RDSE	JDWE	RELEASED TO PRODUCTION	12V352AX-DC
REV	DATE	BY	CHK	APR	DESCRIPTION	ECN

TITLE		NET-ACCESS S-TYPE CABINET W/INTEGRAL CABINET TOP CABLE ROUTING SYSTEM 800mm WIDE X 1070mm DEEP FAMILY		
		CUSTOMER DRAWING		
ITEM REVISION NAME		12V352AX/01.PRT		
DATASET FILE NAME		12V352AX_DC/01A.PRT		
		MATERIAL:		
		N/A		
		DRAWING NUMBER:		
		12V352AX-DC		
DRAWN BY	DATE	CHK	SCALE	SIZE
PBS	4-09-13		NONE	A

THIS COPY IS PROVIDED ON A RESTRICTED BASIS AND IS NOT TO BE USED IN ANY WAY DETRIMENTAL TO THE INTERESTS OF PANDUIT CORP.

PART NO.	DESCRIPTION	SINGLE HINGE FRONT DOOR	SPLIT REAR DOOR	SPLIT SIDE PANEL	FRONT CAGE NUT E-RAIL	REAR CAGE NUT FINGER MGMT E-RAIL	REAR CAGE NUT VERTICAL PATCH E-RAIL	STANDARD PDU BRACKETS	CASTERS	CABLE MGMT FINGERS	VERTICAL PATCHING	CABINET WEIGHT FULLY UNPACKAGED	CABINET WEIGHT SHIPPING WEIGHT
S8212*T	NET-ACCESS S-TYPE CABINET 800mm X 42RU X 1070mm DEEP	01	01	02	02	02	00	02	04	00	00	154 Kg/EACH 340 LBS/EACH	174 Kg/EACH 385 LBS/EACH
S8512*T	NET-ACCESS S-TYPE CABINET 800mm X 45RU X 1070mm DEEP	01	01	02	02	02	00	02	04	00	00	161 Kg/EACH 355 LBS/EACH	181 Kg/EACH 400LBS/EACH
S8812*T	NET-ACCESS S-TYPE CABINET 800mm X 48RU X 1070mm DEEP	01	01	02	02	02	00	02	04	00	00	167 Kg/EACH 370 LBS/EACH	188 Kg/EACH 415 LBS/EACH
S8219*T	NET-ACCESS S-TYPE CABINET 800mm X 42RU X 1070mm DEEP	01	01	00	02	02	00	02	04	00	00	121 Kg/EACH 267 LBS/EACH	141 Kg/EACH 312 LBS/EACH
S8519*T	NET-ACCESS S-TYPE CABINET 800mm X 45RU X 1070mm DEEP	01	01	00	02	02	00	02	04	00	00	127 Kg/EACH 282 LBS/EACH	148 Kg/EACH 327 LBS/EACH
S8819*T	NET-ACCESS S-TYPE CABINET 800mm X 48RU X 1070mm DEEP	01	01	00	02	02	00	02	04	00	00	134 Kg/EACH 297 LBS/EACH	155 Kg/EACH 342 LBS/EACH

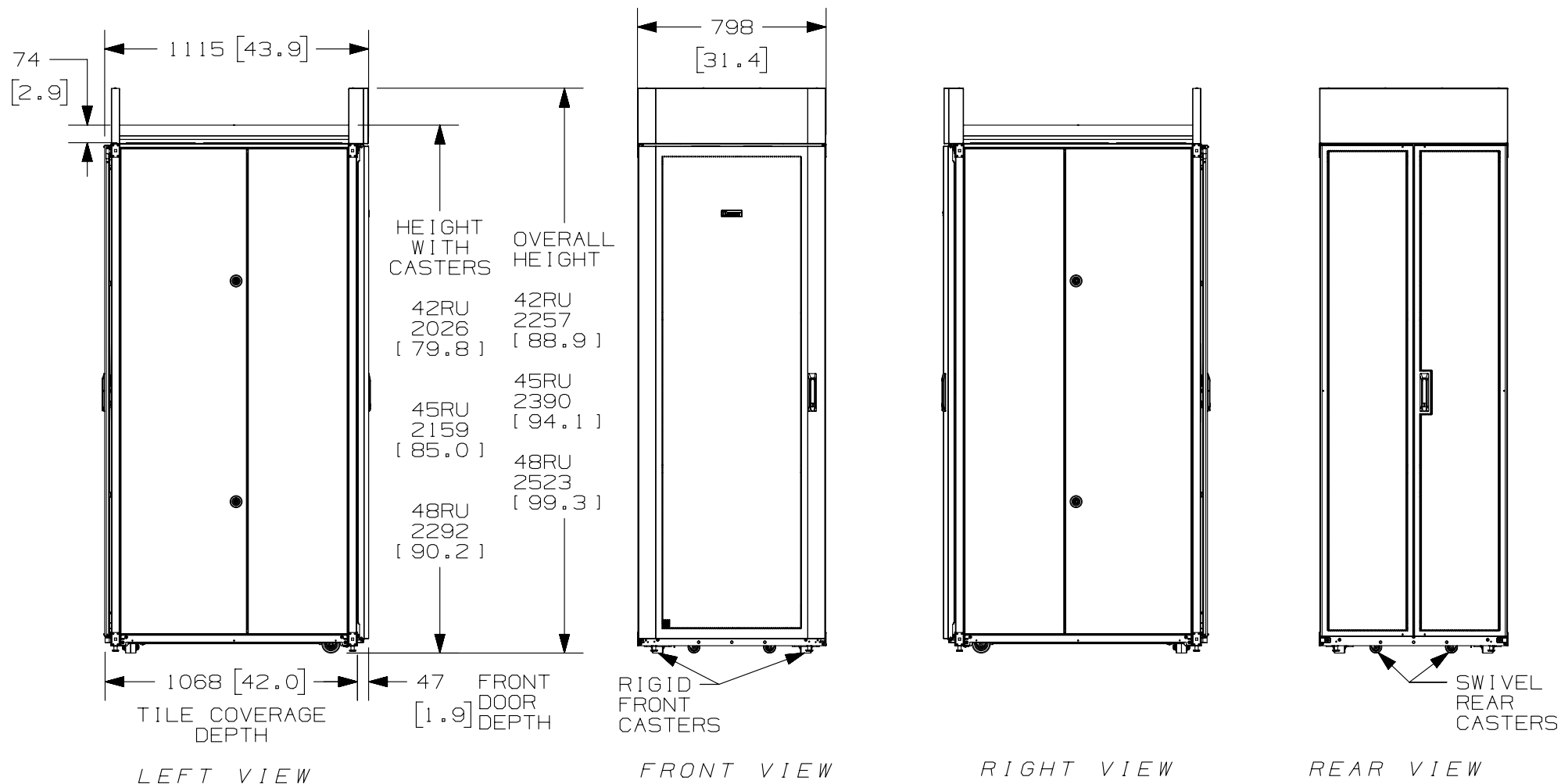
* DENOTES COLOR
 "B" = BLACK
 "W" = WHITE

							TITLE NET-ACCESS S-TYPE CABINET W/INTEGRAL CABINET TOP CABLE ROUTING SYSTEM 800mm WIDE X 1070mm DEEP FAMILY CUSTOMER DRAWING						
							ITEM REVISION NAME 12V352AX/01.PRT						
							DATASET FILE NAME 12V352AX_DC/01A.PRT						
											MATERIAL: N/A		
01A	12-02-14	MDCA	ADP	TCN	SEE SHEET 1 OF 5 FOR REVISIONS	V09000BX	 THIRD ANGLE PROJECTION				DRAWING NUMBER: 12V352AX-DC		
00A	5-15-13	PBS	RDSE	JDWE	SEE SHEET 1 OF 5 FOR REVISIONS	12V352AX-DC							
REV	DATE	BY	CHK	APR	DESCRIPTION	ECN	DRAWN BY PBS	DATE 4-09-13	CHK	SCALE NONE	SHT 2 OF 5	SIZE A	

2

1

THIS COPY IS PROVIDED ON A RESTRICTED BASIS AND IS NOT TO BE USED IN ANY WAY DETRIMENTAL TO THE INTERESTS OF PANDUIT CORP.



A

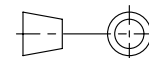
A

						TITLE	
						NET-ACCESS S-TYPE CABINET W/INTEGRAL CABINET TOP CABLE ROUTING SYSTEM 800mm WIDE X 1070mm DEEP FAMILY CUSTOMER DRAWING	
						ITEM REVISION NAME	PANDUIT
						12V352AX/01.PRT	
						DATASET FILE NAME	
						12V352AX_DC/01A.PRT	MATERIAL: N/A
01A	12-02-14	MDCA	ADP	TCN	SEE SHEET 1 OF 5 FOR REVISIONS	V09000BX	DRAWING NUMBER: 12V352AX-DC
00A	5-15-13	PBS	RDSE	JDWE	SEE SHEET 1 OF 5 FOR REVISIONS	12V352AX-DC	
REV	DATE	BY	CHK	APR	DESCRIPTION	ECN	

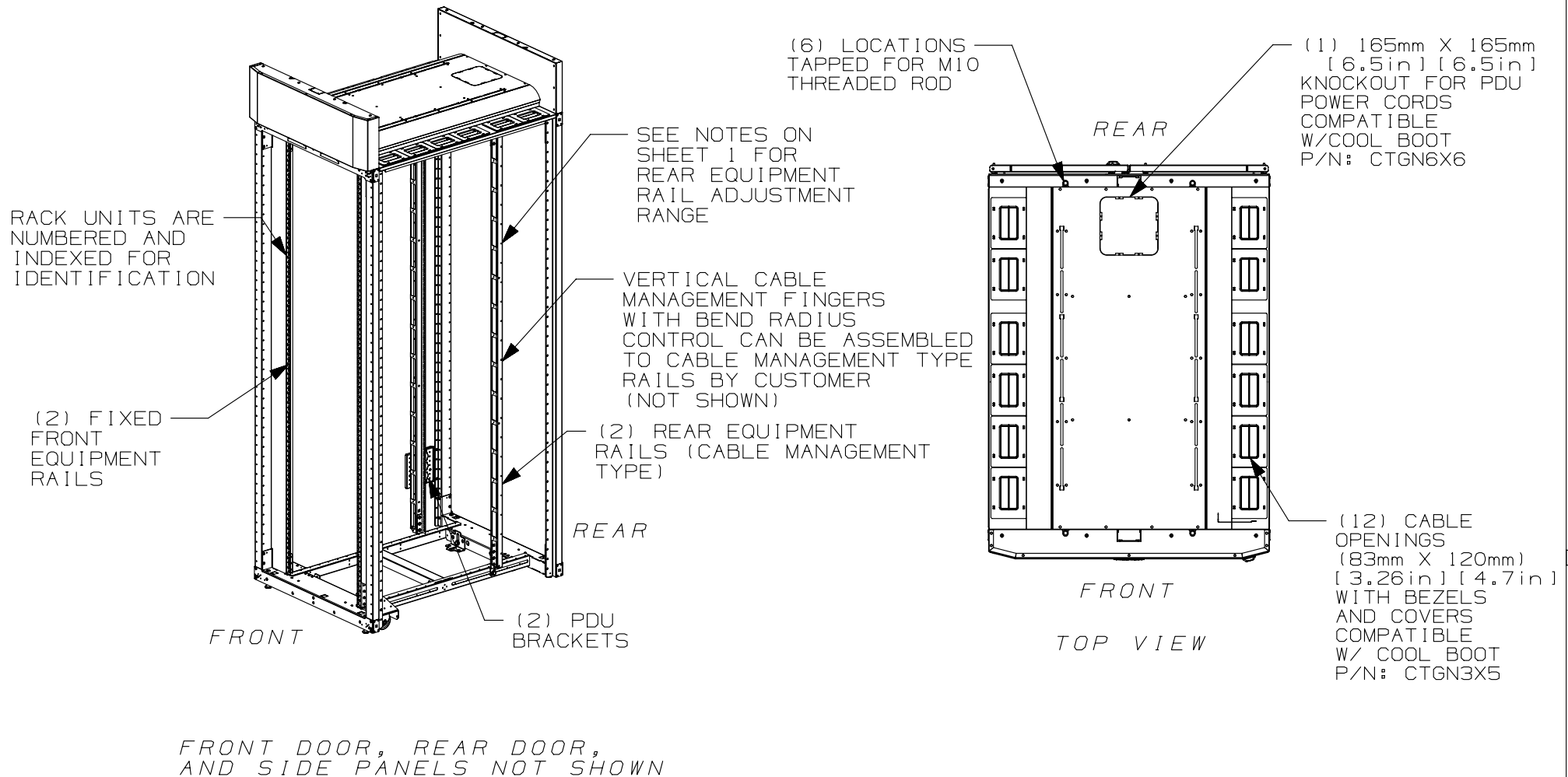
2


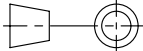
1

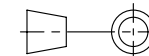
DRAWN BY	DATE	CHK	SCALE	SHT 3 OF 5	SIZE
PBS	4-09-13		NONE		A

THIRD ANGLE
PROJECTION

THIS COPY IS PROVIDED ON A RESTRICTED BASIS AND IS NOT TO BE USED IN ANY WAY DETRIMENTAL TO THE INTERESTS OF PANDUIT CORP.



							TITLE NET-ACCESS S-TYPE CABINET W/INTEGRAL CABINET TOP CABLE ROUTING SYSTEM 800mm WIDE X 1070mm DEEP FAMILY CUSTOMER DRAWING					
							ITEM REVISION NAME 12V352AX/01.PRT					
							DATASET FILE NAME 12V352AX_DC/01A.PRT					
										MATERIAL : N/A		
01A	12-02-14	MDCA	ADP	TCN	SEE SHEET 1 OF 5 FOR REVISIONS	V09000BX	 THIRD ANGLE PROJECTION			DRAWING NUMBER: 12V352AX-DC		
00A	5-15-13	PBS	RDSE	JDWE	SEE SHEET 1 OF 5 FOR REVISIONS	12V352AX-DC						
REV	DATE	BY	CHK	APR	DESCRIPTION	ECN	DRAWN BY PBS	DATE 4-09-13	CHK	SCALE NONE	SHT 4 OF 5	SIZE A



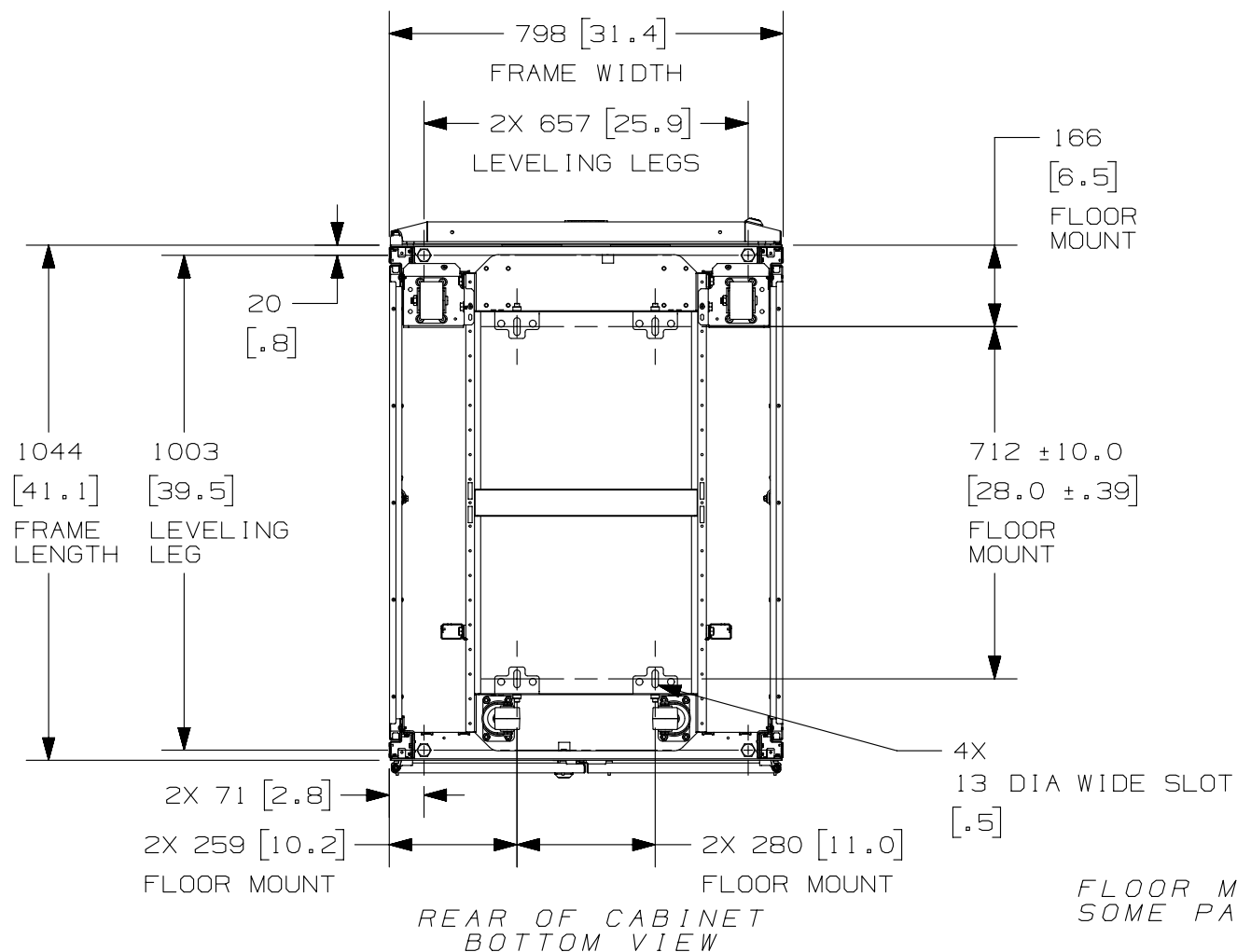
THIRD ANGLE
PROJECTION

DRAWN BY	DATE	CHK	SCALE	DRAWING NUMBER	SIZE
PBS	4-09-13		NONE	SHT 4 OF 5	A

2

1

THIS COPY IS PROVIDED ON A RESTRICTED BASIS AND IS NOT TO BE USED IN ANY WAY DETRIMENTAL TO THE INTERESTS OF PANDUIT CORP.



2

1

TITLE
NET-ACCESS S-TYPE CABINET W/INTEGRAL
CABINET TOP CABLE ROUTING SYSTEM 800mm
WIDE X 1070mm DEEP FAMILY
CUSTOMER DRAWING

ITEM REVISION NAME
12V352AX/01.PRT

DATASET FILE NAME
12V352AX_DC/01A.PRT

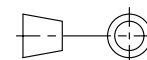
PANDUIT

MATERIAL:

N/A

DRAWING NUMBER:

12V352AX-DC



THIRD ANGLE
PROJECTION

DRAWN BY PBS	DATE 4-09-13	CHK	SCALE NONE	SHT 5 OF 5	SIZE A
-----------------	-----------------	-----	---------------	------------	-----------

REV	DATE	BY	CHK	APR	DESCRIPTION	ECN
01A	12-02-14	MDCA	ADP	TCN	SEE SHEET 1 OF 5 FOR REVISIONS	V09000BX
00A	5-15-13	PBS	RDSE	JDWE	SEE SHEET 1 OF 5 FOR REVISIONS	12V352AX-DC