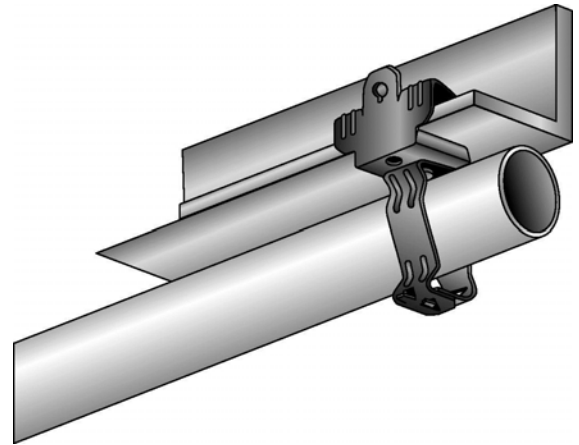
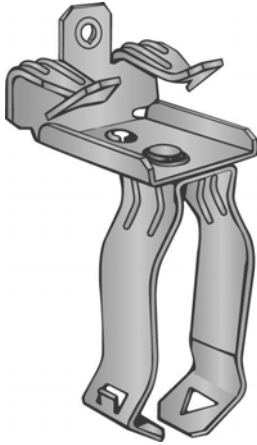


Part Number: P16M58

Product Description: BEAM CLAMP FOR 5/16" - 1/2" FLANGE WITH 1" SNAP CLOSED CONDUIT CLIP

**Material Specifications**

Type: Assembly

Finish: Assembly

Color: Various

Function Specifications**Compatible Wires and Cables**

AC/MC CABLE (OD):

Drop Wire:

Plain Rod (in):

Threaded Rods and Bolts

Tapped Holes: 1/4"-20 BACK OF BEAM CLAMP

Clearance Holes (in):

Threaded Rod Size (in):

Compatible Conduit

EMT Size (in): 1

Rigid/IMC (in): 1

Compatible Flanges and Studs

Flange Size (in): 5/16 to 1/2

Metal Stud Size (ins):

Static Load Rating

Vertical (lbs): 75

Horizontal (lbs):

Other**Codes and Regulatory**Regulatory
Certifications: UL/cUL

Country of Origin: US

Packaging

General Packaging: Cardboard Box

Box Size: 15 X 8.25 X 7.25

Pieces per Package: 100

Other Box Features:

Document Information

Created By: DBLA

Checked By: DJW

Approved By: KLN

Customer Specification #: C11162

Revision Level: 01

ECN #: GAECN01482

Date: 12/10/2013