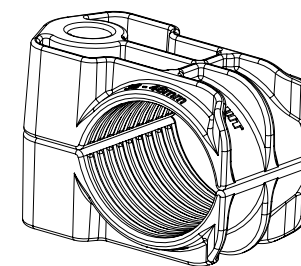
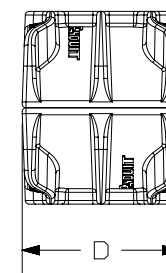
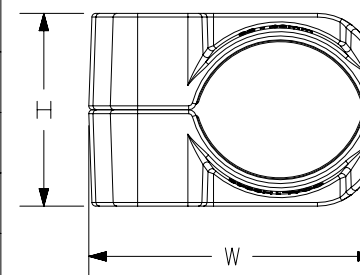
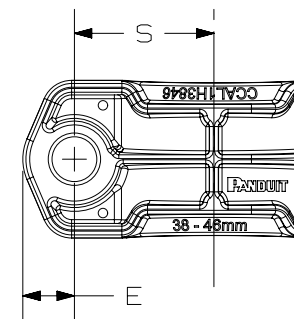


THIS COPY IS PROVIDED ON A RESTRICTED BASIS AND IS NOT TO BE USED IN ANY WAY DETRIMENTAL TO THE INTERESTS OF PANDUIT CORP.


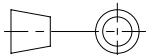
PART NUMBER	CABLE DIAMETER RANGE in. [ mm ]	"H" in. [ mm ]	"W" in. [ mm ]	"D" in. [ mm ]	"E" in. [ mm ]	"S" in. [ mm ]	WEIGHT lb [ g ]	MOUNTING HOLES
CCAL1H1013-X	0.39-0.51 [ 10-13 ]	0.91 [ 23 ]	1.57 [ 40 ]	1.61 [ 41 ]	0.48 [ 12 ]	0.77 [ 20 ]	0.11 [ 50 ]	1 × M10
CCAL1H1316-X	0.51-0.63 [ 13-16 ]	1.02 [ 26 ]	1.73 [ 44 ]	1.61 [ 41 ]	0.48 [ 12 ]	0.83 [ 21 ]	0.13 [ 59 ]	1 × M10
CCAL1H1619-X	0.63-0.75 [ 16-19 ]	1.14 [ 29 ]	1.89 [ 48 ]	1.61 [ 41 ]	0.50 [ 13 ]	0.91 [ 23 ]	0.15 [ 68 ]	1 × M10
CCAL1H1923-X	0.75-0.91 [ 19-23 ]	1.26 [ 32 ]	2.05 [ 52 ]	1.61 [ 41 ]	0.50 [ 13 ]	0.99 [ 25 ]	0.17 [ 77 ]	1 × M10
CCAL1H2327-X	0.91-1.06 [ 23-27 ]	1.42 [ 36 ]	2.20 [ 56 ]	1.61 [ 41 ]	0.51 [ 13 ]	1.07 [ 27 ]	0.20 [ 89 ]	1 × M10
CCAL1H2732-X	1.06-1.26 [ 27-32 ]	1.57 [ 40 ]	2.44 [ 62 ]	1.61 [ 41 ]	0.53 [ 14 ]	1.19 [ 30 ]	0.24 [ 107 ]	1 × M10
CCAL1H3238-X	1.26-1.50 [ 32-38 ]	1.77 [ 45 ]	2.68 [ 68 ]	1.65 [ 42 ]	0.53 [ 14 ]	1.30 [ 33 ]	0.27 [ 125 ]	1 × M10
CCAL1H3846-X	1.50-1.81 [ 38-46 ]	2.01 [ 51 ]	2.99 [ 76 ]	1.65 [ 42 ]	0.54 [ 14 ]	1.45 [ 37 ]	0.33 [ 149 ]	1 × M10
CCAL1H4651-X	1.81-2.01 [ 46-51 ]	2.36 [ 60 ]	3.27 [ 83 ]	1.65 [ 42 ]	0.56 [ 14 ]	1.58 [ 40 ]	0.40 [ 181 ]	1 × M10
CCAL1H5157-X	2.01-2.24 [ 51-57 ]	2.56 [ 65 ]	3.50 [ 89 ]	1.65 [ 42 ]	0.57 [ 14 ]	1.70 [ 43 ]	0.44 [ 202 ]	1 × M10



#### NOTES:

1. VISIT OUR ON-LINE CATALOG AT [WWW.PANDUIT.COM](http://WWW.PANDUIT.COM) FOR A LIST OF CURRENT PARTS APPLICABLE FOR USE WITH THIS PRODUCT.
2. DIMENSIONS IN [ ] ARE METRIC.
3. ALL MATERIALS AND COMPONENTS USED MEET THE MATERIAL RESTRICTIONS OF RoHS (EUROPEAN DIRECTIVE ON THE RESTRICTION OF HAZARDOUS SUBSTANCES) AS PROPOSED BY THE RoHS TECHNICAL ADAPTATION COMMITTEE.
4. CASTINGS ARE ALUMINUM.
5. MEETS IEC 61914:2015 SPECIFICATIONS.
6. MOUNTING FASTENERS AND INSULATING MATERIALS ARE NOT INCLUDED IN THE PACKAGE AND MUST BE PURCHASED SEPARATELY.
7. SELECT M10 BOLT LENGTH SUITABLE FOR THE RUNG.
8. CONTACT PANDUIT SALES FOR CUSTOMIZED SOLUTIONS.

01B	03-07-24	JBN	MRWA	ADHA	UPDATED TO CURRENT PANDUIT STANDARDS	041916/01
01A	05-09-19	KEC	BBEA	GBI	UPDATED PER COMPONENTS	
00A	04-16-19	KEC	BBEA	GBI	RELEASED	041916/00
REV	DATE	BY	CHK	APR	DESCRIPTION	ECN

PART NUMBER						SEE TABLE											
TITLE												ALUMINUM 1-HOLE CABLE CLEAT					
CUSTOMER DRAWING																	
ITEM REVISION NAME						00017EAT/01											
DATASET FILE NAME						00017EAT_DC/01B											
																	
MATERIAL						ALUMINUM						DRAWING NUMBER					
												00017EAT_DC					
DRAWN BY		DATE		CHK		SCALE											
KEC		08-02-18		BBEA		1:2											
SHEET 1 OF 1												A					

B

A



B

A

