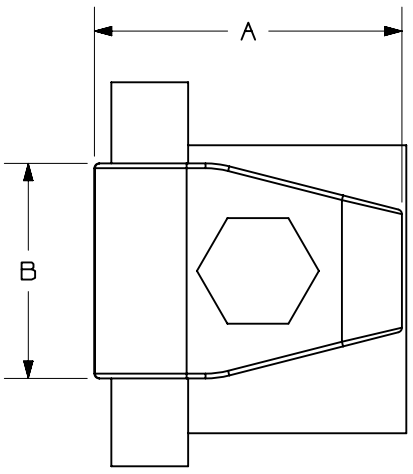


2

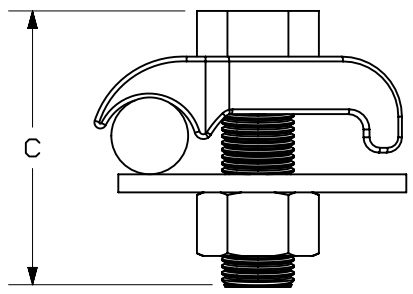
1

THIS COPY IS PROVIDED ON A RESTRICTED BASIS AND IS NOT TO BE USED IN ANY WAY DETRIMENTAL TO THE INTERESTS OF PANDUIT CORP.



NOTES:

- 1. MADE FROM HIGH COPPER CONTENT ALLOY. FURNISHED WITH FULL THREADED SILICON BOLT, NUTS, AND LOCKWASHERS.
- 2. CONNECTORS ARE UL LISTED FOR GROUNDING, BONDING, AND DIRECT BURIAL APPLICATIONS. NOTE: PARTS WITH A WIRE RANGE ABOVE 250 kcmil
- 3. SEE WWW.PANDUIT.COM FOR PACKAGE QUANTITIES



PANDUIT PART NUMBER	CONDUCTOR RANGE	DIMENSIONS IN [mm] ±0.1 [2.5]			BOLT DIA	RoHS COMPLIANT
		A	B	C		
GMS-1-X	8 SOL - 4 STR	1.25 [32]	1.00 [25]	1.63 [41]	3/8"	NO
GMS-2-Q	4 SOL - 2/0 STR	1.63 [41]	1.13 [28]	1.75 [44]	3/8"	YES
GMS-3-Q	2/0 SOL - 250 kcmil	2.13 [54]	1.50 [38]	2.00 [51]	1/2"	N/A
GMS-4-X	300 kcmil - 500 kcmil	2.38 [60]	1.63 [41]	2.50 [63]	1/2"	N/A

PART NUMBER		SEE TABLE	
TITLE			
BRONZE GROUND CLAMP - GMS SERIES			
CUSTOMER DRAWING			
ITEM REVISION NAME		N41170BA/07	
DATASET FILE NAME		N41170BA-DC/07A	
		THIRD ANGLE PROJECTION	
MATERIAL		SEE NOTES	
DRAWING NUMBER		N41170BA-DC	
REV	DATE	BY	CHK
ED	10-95	WJB	NONE
SHEET 1 OF 1		A	

07A	7-24-23	JHNU	JHNU	MRWA	C. ADDED RoHS COMPLIANT COLUMN B. REVISED DRAWING NUMBER: N41170BA-DC WAS C41170 A. CONVERTED TO NX	133002
REV	DATE	BY	CHK	APR	DESCRIPTION	ECN

2

1

A-SIZE CUSTOMER

B

B

A

A