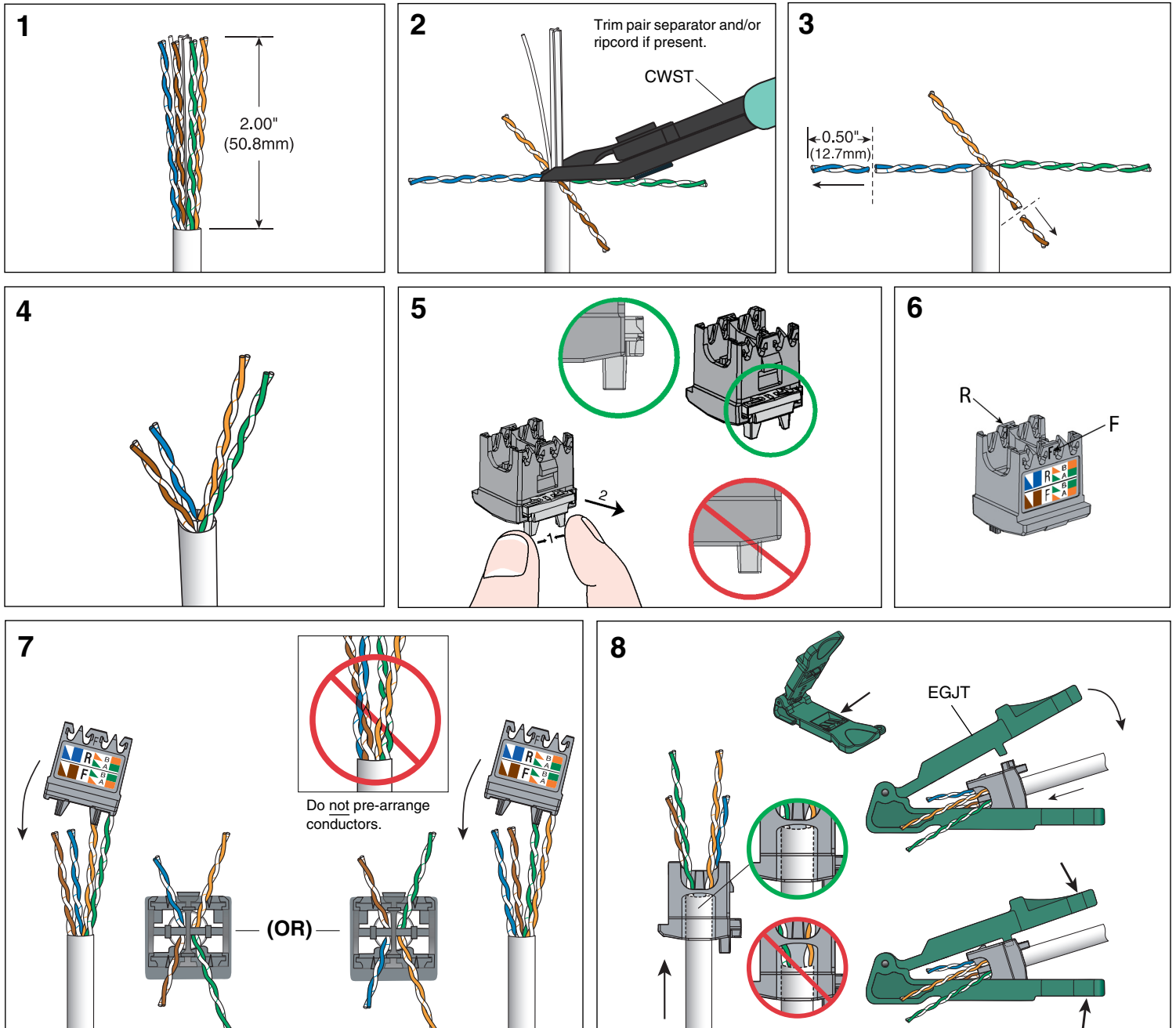
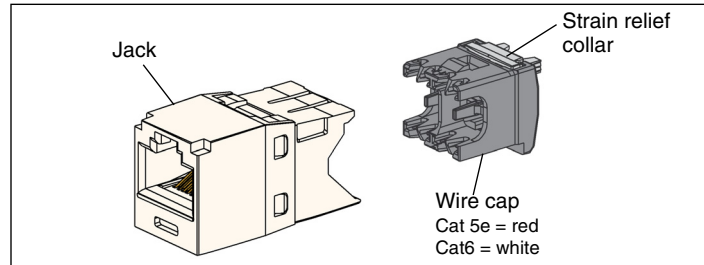


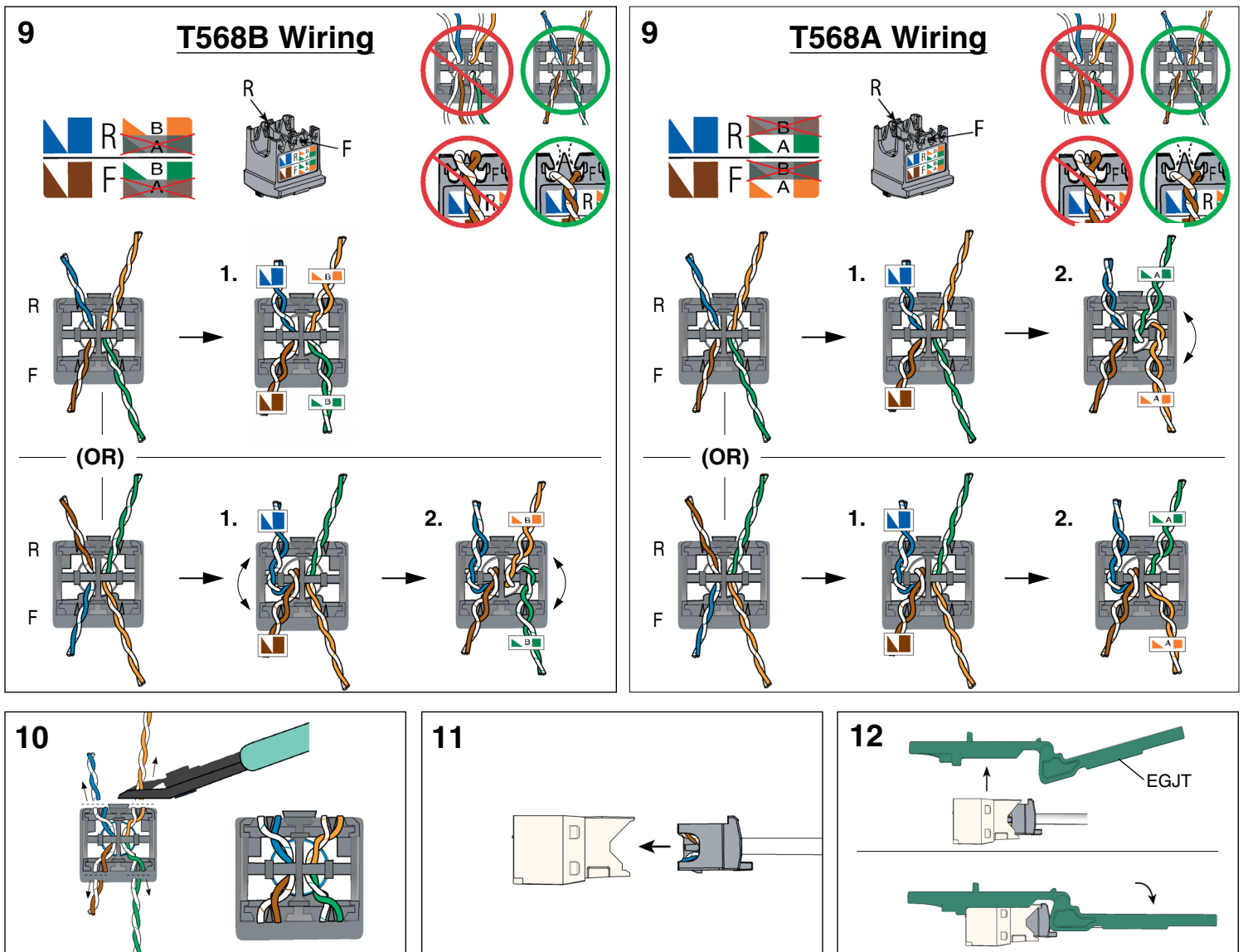
### TERMINATION STEPS



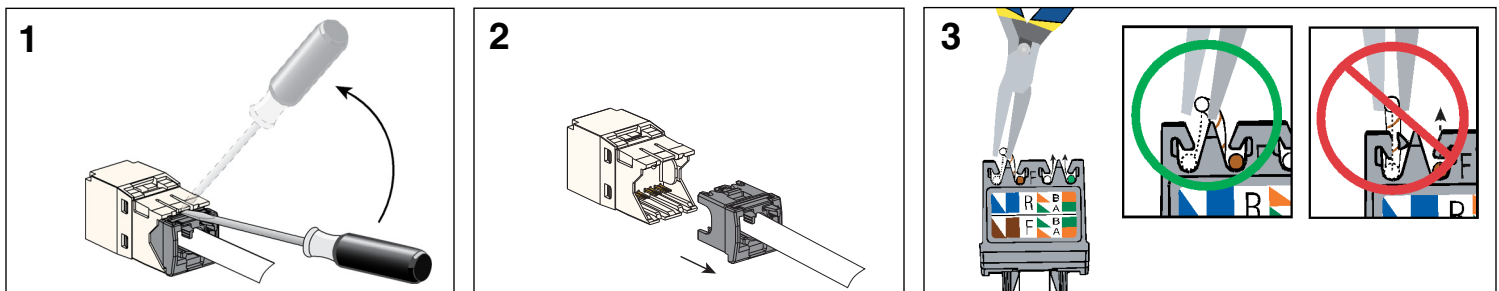
\*\* Denotes color.

Note: For bulk packaged TG style jack modules, add -24 to end of part number.

For Technical Support: [www.panduit.com/resources/install\\_maintain.asp](http://www.panduit.com/resources/install_maintain.asp)



## REMOVAL STEPS



### Notes:

- Corrosion Resistant jack modules may be re-terminated a maximum of 3 times at the wire cap and a maximum of 5 plug insertions.
- For specified performance, follow TIA/EIA 568-C installation guidelines.
- Corrosion resistant jack modules can terminate 22-26 AWG solid or stranded IWC data cable with 0.062" (1.57mm) maximum insulated conductor outside diameter.
- For technical and performance information, consult *PANDUIT* technical support.

### As with all Communication Components, the following statements apply:

- Never install communications wiring during a lightning storm.
- Never install communications wiring in wet locations unless the jack is specifically designed for use in wet locations.
- Never touch uninsulated communications wiring or terminals unless the communication line has been disconnected at the network interface.
- Use caution when installing or modifying communication wiring.

**CJE\*\* INSTALLATION BEST PRACTICES**