



OPTIONAL CABLE

USB TO SERIAL ADAPTER

NOTE: *In the interest of higher quality and value, PANDUIT is constantly improving and updating our products. Consequently, pictures herein may vary from the actual product.*

Website: www.panduit.com
Email: cs@panduit.com

EU Website:
www.panduit.com/emea

EU Email: EMEA-
Toolservicecenter@panduit.com



Panduit Corp. • USA Headquarters • Tinley Park, IL
Tel: 888-506-5400, ext. 3255 • Fax: 630-759-7532

PANDUIT Europe • EMEA Headquarters
Tel: +31 (0) 546 580 452 • Fax: +31 (0) 546 580 441

System Requirements

- Windows XP SP2 (recommended), Windows 2000 SP4, Vista
- CablesToGo USB to Serial DB9 adapter (recommended)
- Computer with available USB ports

Install Software for the USB to Serial Adapter

1. Insert the CD that came with the USB to Serial Adapter into the CD drive on the target computer.
2. If the auto start runs the installation go to step 6; if not, then continue.
3. Click on the My Computer icon, either on the desktop or click Start and then My Computer.
4. Double-click on the icon for the CD-ROM drive to display the files.
5. Find the Autorun.exe or Setup.exe file and double-click on it.
6. Select the option to install the USB to Serial Adapter you have with the Windows version you are running.
7. Connect the cable to one of the USB ports and reboot if prompted to reboot.

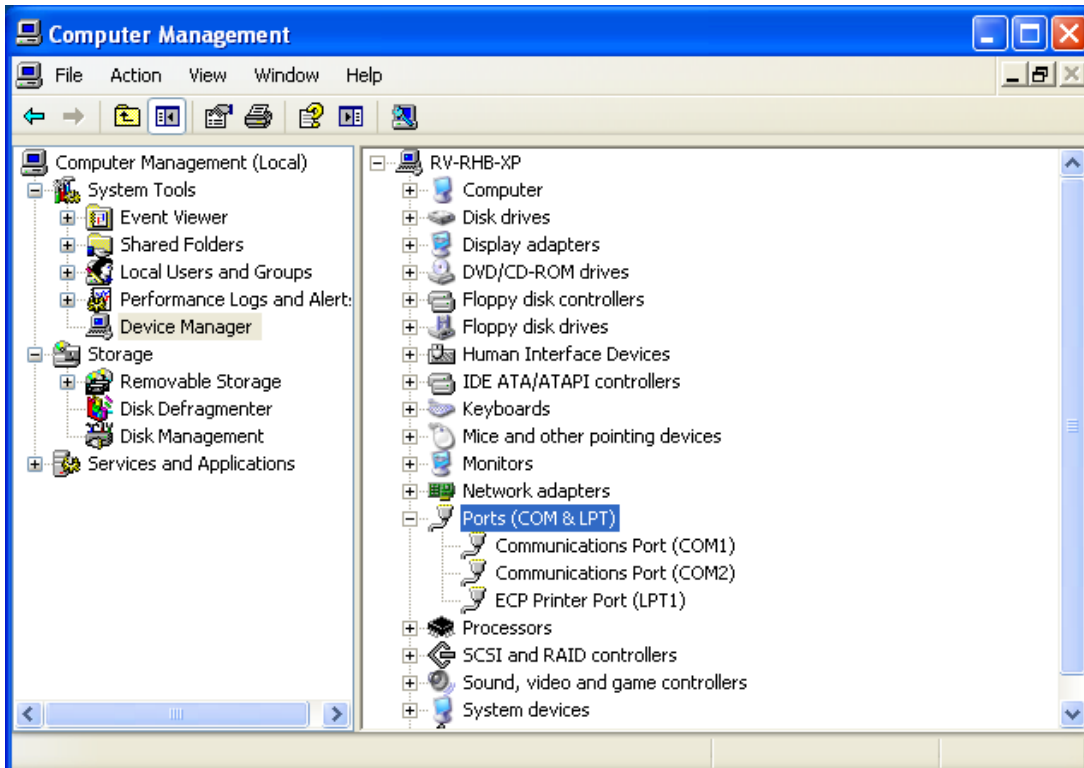
Change Port Assignment

1. Click Start then Control Panel; double-click Administrative Tools and Computer Management.

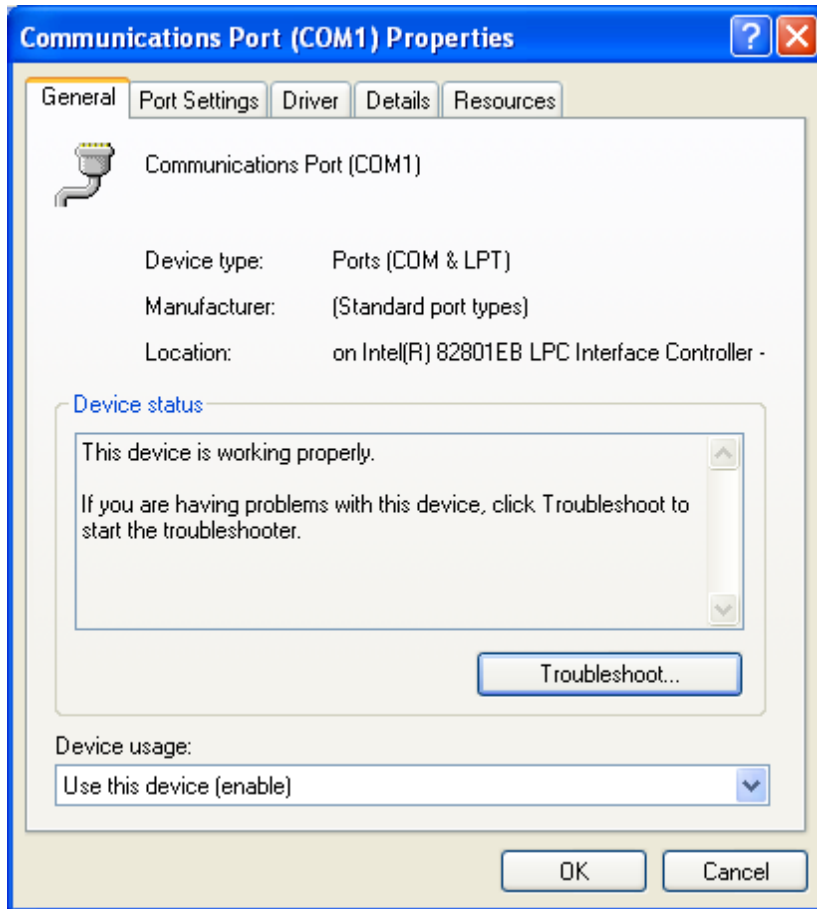
OR Click Start, Control Panel, Performance and Maintenance, Administrative Tools and double-click on Computer Management.

2. Click Device Manager in the left pane.

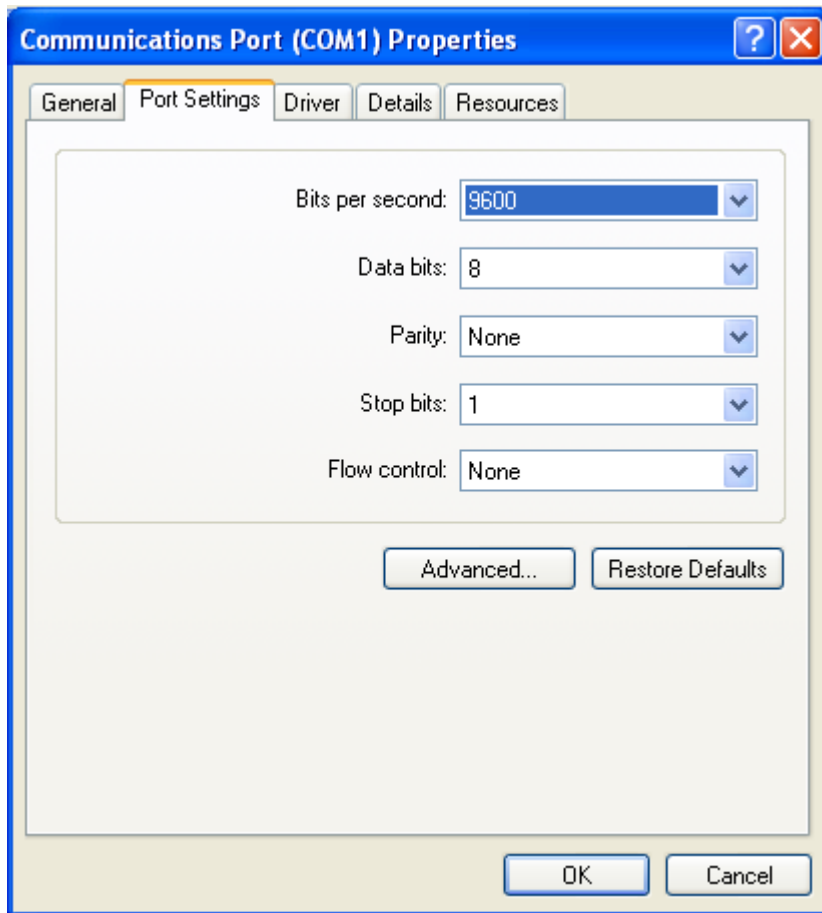
3. On the right pane click on the + in front of Ports (Com & LPT). Note that the USB to Serial Adapter may not be COM1, but it needs to be in order to communicate with the Embosser.



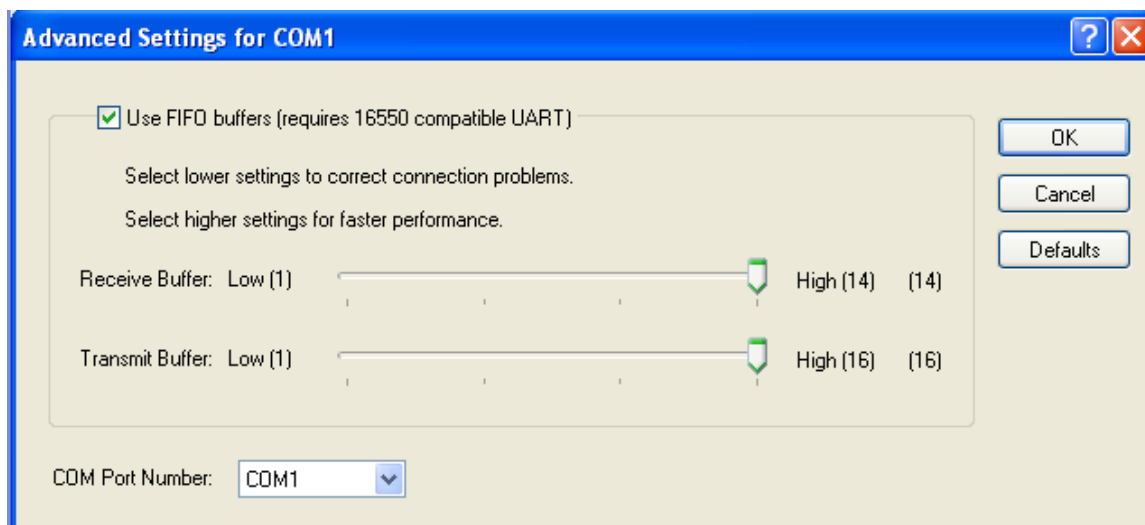
4. Check all of the devices under Ports and if none are assigned to COM1; go to step 11 if one is, then continue.
5. Double-click on the device that is assigned to COM1.



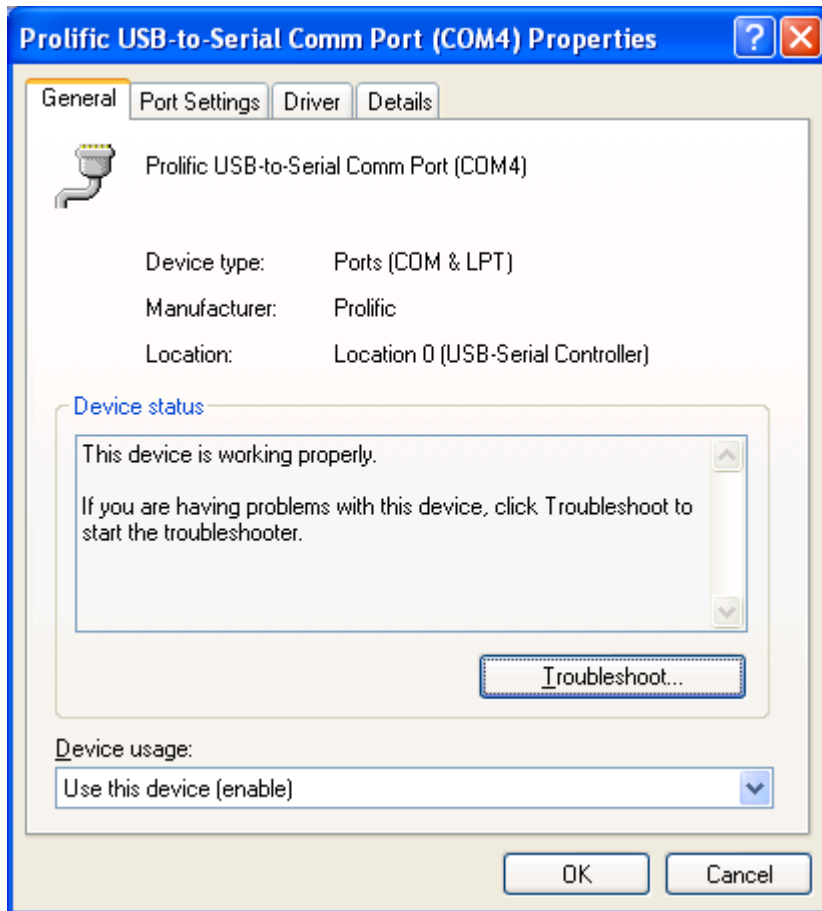
6. Click on the Port Settings tab.



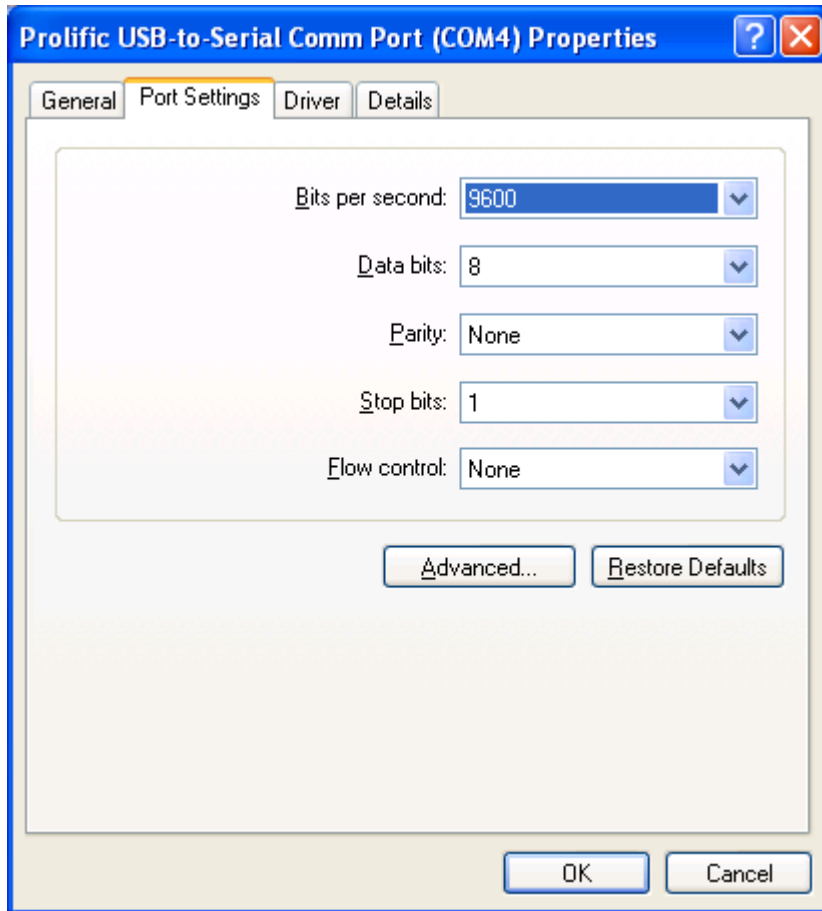
7. Click the Advanced... button.



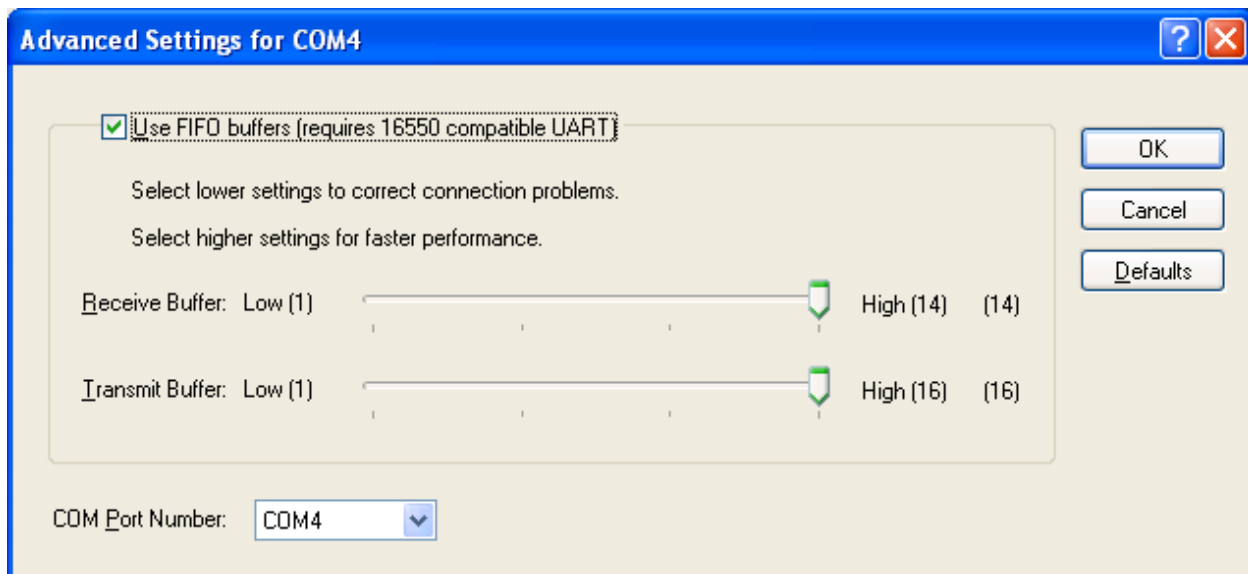
8. Change the COM Port Number by clicking on the down arrow just to the right of the field and select a number that is not in use.
9. Click OK
10. Click OK
11. Double click on the USB to Serial device.



12. Click on the Port Settings tab.



13. Click the Advanced... button.



14. Change the COM Port Number by clicking on the down arrow just to the right of the field to COM1.

15. Click OK

16. Click OK

Note: the COM number(s) may not have been updated on the Computer Management screen, close this window and reopen it. Now you should be able to view the changes.