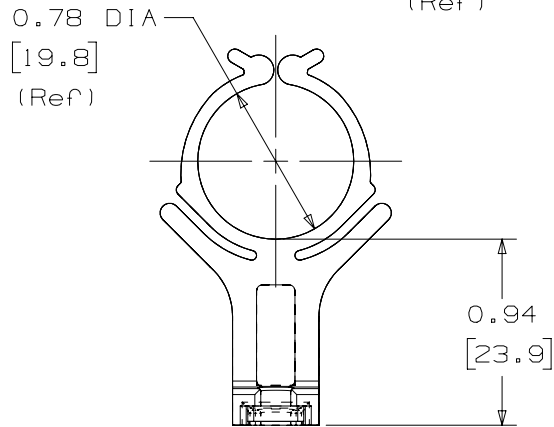
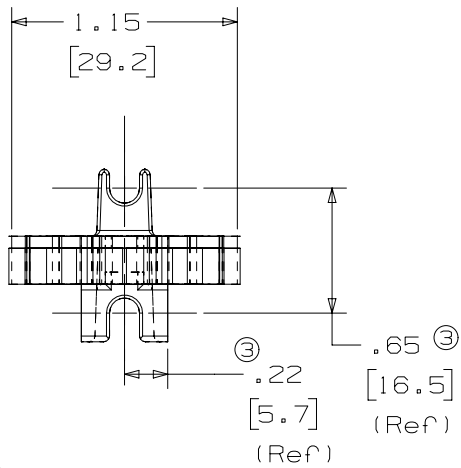
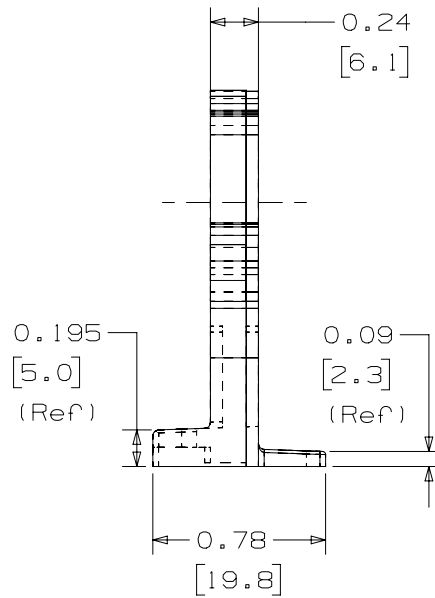


THIS COPY IS PROVIDED ON A RESTRICTED BASIS AND IS NOT TO BE USED IN ANY WAY DETRIMENTAL TO THE INTERESTS OF PANDUIT CORP.



PANDUIT PART NUMBER	MAX. BUNDLE DIA. IN (MM)	REC'M FASTENER	WEIGHT lbs / 100pcs (g)
BR.75-E6	0.75 (19.)	#6 SCREW (M3)	0.86 (392)



NOTES:

- ③ 1. SEE <http://www.panduit.com> FOR PART NUMBER SUFFIX DESIGNATION FOR PACKAGE SIZE.
- 2. COLOR: BLACK

DIMENSIONS IN BRACKETS ARE METRIC [mm]

CAD FILENAME/LAYERS 10B015DK/00_DC_GB0239HN_03

PANDUIT CORP. TINLEY PARK, ILLINOIS

BUNDLE RETAINER, BR.75-E6

UNLESS OTHERWISE SPECIFIED, DIMENSIONAL TOLERANCES ARE:
 (.X) ±0.05 (1.3) (.XXX) ±0.010 (0.25)
 (.XX) ±0.02 (0.5) ANGLES ± 5°

UNLESS OTHERWISE SPECIFIED, ALL DIMENSIONS ARE GIVEN IN INCHES, THIRD ANGLE PROJECTION.

DRAWN BY JAD

MAT'L:

SCALE NONE

DATE 6/15/01

RUBBER MODIFIED NYLON 6/6

DRAWING NO.

DWG SIZE

GB0239HN

A

REV	DATE	BY	CHK	DESCRIPTION	ECN	R	CUST	SUP
③	10/03/11	BWG		ADDED MOUNTING HOLE CENTERS REF. DIMENSIONS. REVISED NOTE 1 TO SHOW PANDUIT WEBSITE.	GB0239HN	3		