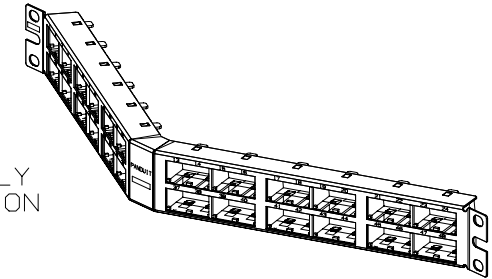
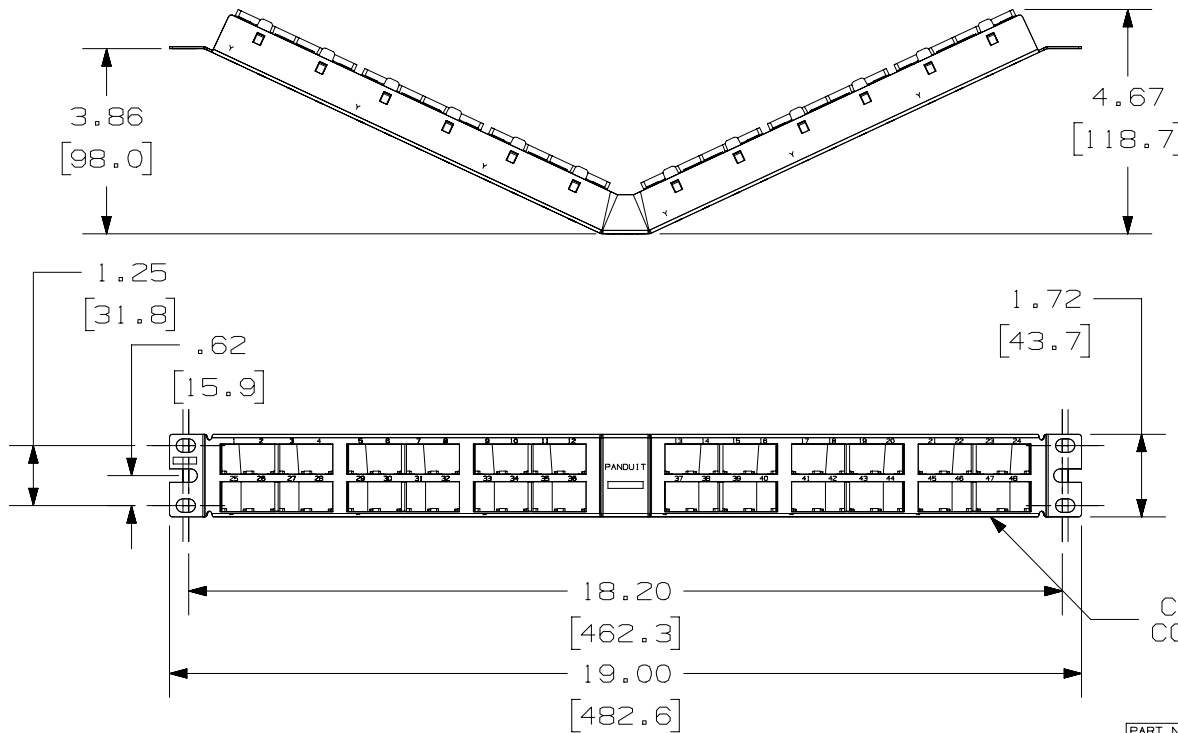


THIS COPY IS PROVIDED ON A RESTRICTED BASIS AND IS NOT TO BE USED IN ANY WAY DETRIMENTAL TO THE INTERESTS OF PANDUIT CORP.

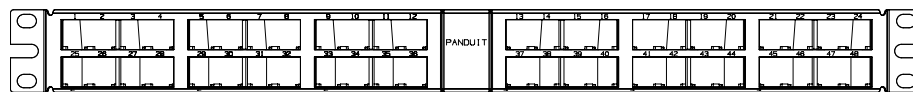
PANDUIT P/N	WEIGHT
CPPA48HDWBL Y CPPA48HDWWH	6.88 LB/10 PCS (3215.2.0 g/10 PCS)

NOTES:

- SEE CURRENT CATALOG FOR ADDITIONAL PART NUMBER SUFFIXES TO INDICATE COLOR AND OR PACKAGE QUANTITY.
- SEE CATALOG FOR COMPLETE LIST OF PARTS APPLICABLE FOR USE WITH THIS PART.
- PACKAGE CONTENTS:
  - (1) -48 PORT ANGLED STAMPING
  - (6) -8 POSITION FACEPLATE (ASSEMBLED TO PANEL)
  - (1) -SCREW KIT (INCLUDES FOUR #12-24 SCREWS)
- DIMENSIONS IN [ ] ARE IN METRIC.
- CPPA48HDWBL Y FABRICATED COMPONENTS ARE BLACK.  
CPPA48HDWWH FABRICATED COMPONENTS ARE WHITE.



CPPA48HDWBL Y CONFIGURATION



CPPA48HDWWH CONFIGURATION  
NOTE: NO RECTANGULAR BOXES

PART NUMBER <b>CPPA48HDWBL Y / CPPA48HDWWH</b>	
TITLE <b>MINI-COM 48 PORT ANGLED HIGH DENSITY MODULAR PATCH PANEL</b>	
CUSTOMER DRAWING	
ITEM REVISION NAME <b>M02479DB/01</b>	
DATASET FILE NAME <b>M02479DB_DC82/01A</b>	
UNLESS OTHERWISE SPECIFIED, DIMENSIONAL TOLERANCES ARE: IN [ mm ] .x ± .03 [ .8 ] .xxx ± .010 [ .3 ] ANGLES ±	
MATERIAL: PANEL: 20 GAGE C.R.S FACEPLATE: ABS	
DRAWING NUMBER: <b>02479-082</b>	
DRAWN BY <b>JSP</b>	DATE <b>8-8-06</b>
CHK <b>MJD</b>	SCALE <b>NONE</b>
THIRD ANGLE PROJECTION	
SHT 1 OF 1	
SIZE <b>A</b>	

REV	DATE	BY	CHK	APR	DESCRIPTION	ECN
3	11/12/18	BAME	KRKE	MMR	B. REMOVED METRIC SCREWS	02479-082
2	10/4/17	BAME	KRKE	MMR	ADDED P/N CPPA48HDWWH	02479-082
1	5/7/14	JSP	REFR	MMR	A. REVISED DRAWING TITLE BLOCK	02479-082
R	8-8-06	JSP	MJD	MJD	RELEASED TO PRODUCTION	02479-082