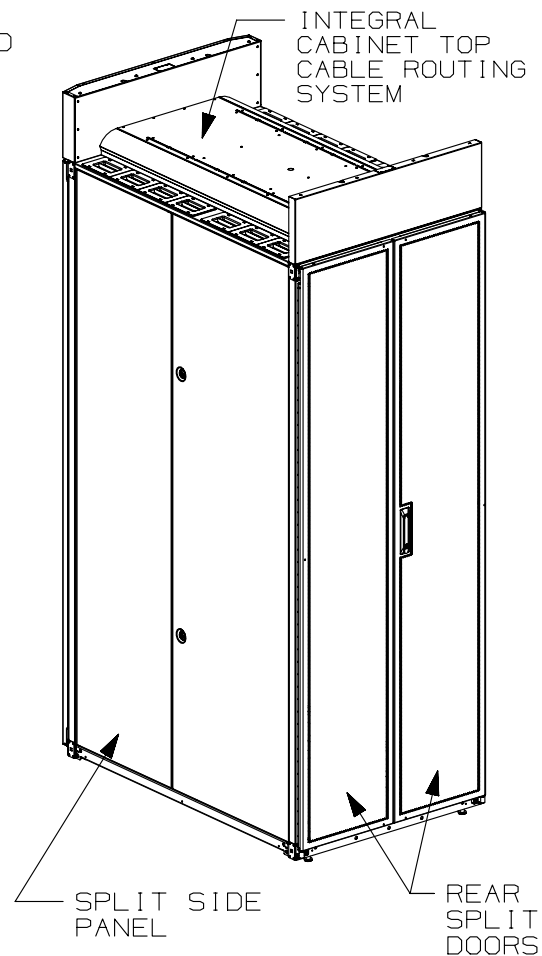
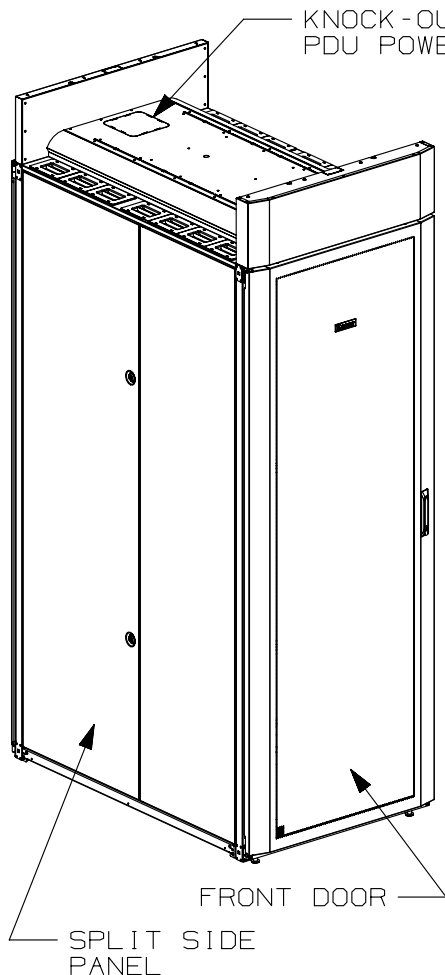


THIS COPY IS PROVIDED ON A RESTRICTED BASIS AND IS NOT TO BE USED IN ANY WAY DETRIMENTAL TO THE INTERESTS OF PANDUIT CORP.



1. VISIT OUR ON-LINE CATALOG AT [WWW.PANDUIT.COM](http://WWW.PANDUIT.COM) FOR A LIST OF CURRENT PARTS APPLICABLE FOR USE WITH THIS PRODUCT.
2. PRIMARY DIMENSIONS ARE IN MILLIMETERS.
3. RAIL ADJUSTMENTS MEASUREMENTS ARE TAKEN FROM THE FRONT FACE OF EACH EQUIPMENT RAIL. INDEPENDENT ADJUSTABLE REAR EQUIPMENT MOUNTING RAILS (EIA) ADJUST FROM 141mm [5.5in] TO 532mm [20.9in] AND FROM 583mm [22.9in] TO 1085mm [42.7in] WITH PDU BRACKETS AND CABLE MANAGEMENT FINGERS IN PLACE.
4. CAN BE USED WITH ANY 19" EIA STANDARD COMPONENT IN ADDITION TO ALL PANDUIT HORIZONTAL CABLE MANAGEMENT AND PATCH PANEL PRODUCTS.
5. EIA UNIVERSAL STANDARD HOLE PROGRESSION ON EQUIPMENT RAILS  
15.88mm [.625in], 15.88mm [.625in],  
12.70mm [.5in], 15.88mm [.625in],  
15.88mm [.625in], 12.7mm [.5in]...ETC.
6. PARTS SUPPLIED:  
-BASE CABINET  
-FRONT PERFORATED SINGLE HINGE DOOR (SEE CHART ON SHEET 2)  
-REAR PERFORATED SPLIT DOOR (SEE CHART ON SHEET 2)  
-SPLIT SIDE PANELS (SEE SHEET 2)  
-EQUIPMENT RAILS FRONT & REAR (SEE CHART ON SHEET 2)  
-PDU BRACKETS (SEE CHART ON SHEET 2)  
-CABINET HARDWARE KIT  
-INSTRUCTION SHEET
7. RACK UNIT SPACING NUMERALS ARE CLEARLY PRINTED ON EQUIPMENT MOUNTING RAILS.
8. FULLY BONDED STRUCTURE WHEN ASSEMBLED PER INSTRUCTIONS.
9. STATIC LOAD RATING. 1360 Kg (3000 LBS)
10. ROLLING LOAD RATING. 1133 Kg (2500 LBS)
11. SINGLE POINT GROUND LOCATIONS AT TOP AND BOTTOM OF CABINET.
12. ALL CABINET RAILS ARE INSTALLED NUMBERS UP.
13. MAXIMUM EQUIPMENT DEPTH, 1111mm [43.75].

## TITLE

NET-ACCESS S-TYPE CABINET W/INTEGRAL  
CABINET TOP CABLE ROUTING SYSTEM - NO  
CASTERS 800mm WIDE X 1200mm DEEP FAMILY  
CUSTOMER DRAWING

## ITEM REVISION NAME

12V352CF/01.PRT

## DATASET FILE NAME

12V352CF\_DC/01A.PRT

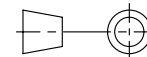
**PANDUIT**

## MATERIAL:

N/A

## DRAWING NUMBER:

12V352CF-DC



THIRD ANGLE  
PROJECTION

## DRAWN BY

MDCA

## DATE

7-07-14

## CHK

ROJC

## SCALE

NONE

## SHT 1 OF 5

## SIZE

A

REV	DATE	BY	CHK	APR	DESCRIPTION	ECN
01A	11-25-14	PBS	ADP	TCN	FLOOR MOUNT DIMENSIONS UPDATED	V09000BX
00A	7-07-14	MDCA	ROJC	TCN	RELEASED TO PRODUCTION	12V352CF-DC


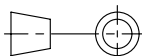
THIS COPY IS PROVIDED ON A RESTRICTED BASIS AND IS NOT TO BE USED IN ANY WAY DETRIMENTAL TO THE INTERESTS OF PANDUIT CORP.

PART NO.	DESCRIPTION	SINGLE HINGE FRONT DOOR	SPLIT REAR DOOR	SPLIT SIDE PANEL	FRONT CAGE NUT E-RAIL	REAR CAGE NUT FINGER MGMT E-RAIL	REAR CAGE NUT VERTICAL PATCH E-RAIL	STANDARD POLY BRACKETS	CASTERS	CABLE MGMT FINGERS	VERTICAL PATCHING	CABINET WEIGHT FULLY UNPACKAGED	CABINET WEIGHT SHIPPING WEIGHT
S8222*T9	NET-ACCESS S-TYPE CABINET 800mm X 42RU X 1200mm DEEP	01	01	02	02	02	00	02	00	00	00	160 Kg/EACH 353 LBS/EACH	181 Kg/EACH 398 LBS/EACH
S8522*T9	NET-ACCESS S-TYPE CABINET 800mm X 45RU X 1200mm DEEP	01	01	02	02	02	00	02	00	00	00	167 Kg/EACH 368 LBS/EACH	187 Kg/EACH 413 LBS/EACH
S8822*T9	NET-ACCESS S-TYPE CABINET 800mm X 48RU X 1200mm DEEP	01	01	02	02	02	00	02	00	00	00	174 Kg/EACH 383 LBS/EACH	194 Kg/EACH 428 LBS/EACH
S8229*T9	NET-ACCESS S-TYPE CABINET 800mm X 42RU X 1200mm DEEP	01	01	00	02	02	00	02	00	00	00	121 Kg/EACH 266 LBS/EACH	141 Kg/EACH 311 LBS/EACH
S8529*T9	NET-ACCESS S-TYPE CABINET 800mm X 45RU X 1200mm DEEP	01	01	00	02	02	00	02	00	00	00	127 Kg/EACH 281 LBS/EACH	148 Kg/EACH 326 LBS/EACH
S8829*T9	NET-ACCESS S-TYPE CABINET 800mm X 48RU X 1200mm DEEP	01	01	00	02	02	00	02	00	00	00	134 Kg/EACH 296 LBS/EACH	155 Kg/EACH 341 LBS/EACH

\* DENOTES COLOR

"B" = BLACK

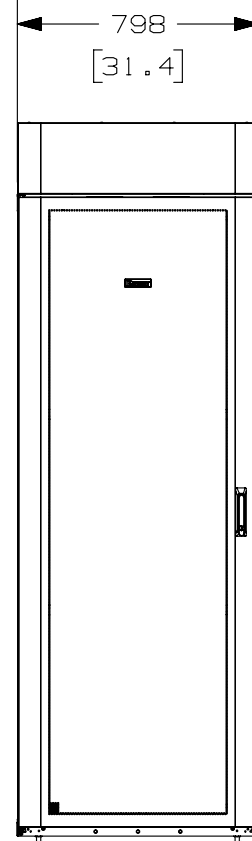
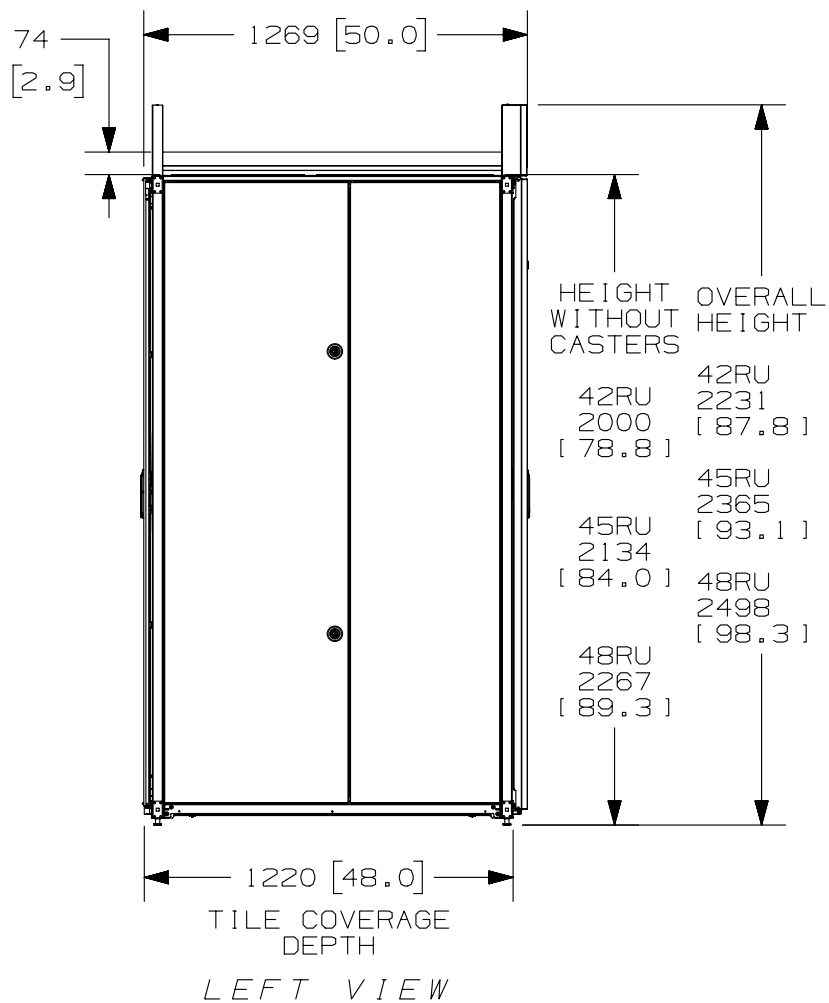
''W'' = WHITE

							TITLE NET-ACCESS S-TYPE CABINET W/INTEGRAL CABINET TOP CABLE ROUTING SYSTEM - NO CASTERS 800mm WIDE X 1200mm DEEP FAMILY CUSTOMER DRAWING					
							ITEM REVISION NAME 12V352CF/01.PRT					
							DATASET FILE NAME 12V352CF_DC/01A.PRT					
01A	11-25-14	PBS	ADP	TCN	SEE SHEET 1 OF 5 FOR REVISIONS	V09000BX	 THIRD ANGLE PROJECTION					
00A	7-07-14	MDCA	ROJC	TCN	SEE SHEET 1 OF 5 FOR REVISIONS	12V352CF-DC						
REV	DATE	BY	CHK	APR	DESCRIPTION	ECN	DRAWN BY	DATE	CHK	SCALE	DRAWING NUMBER: 12V352CF-DC	
							MDCA	7-07-14	ROJC	NONE	SHT 2 OF 5	SIZE A

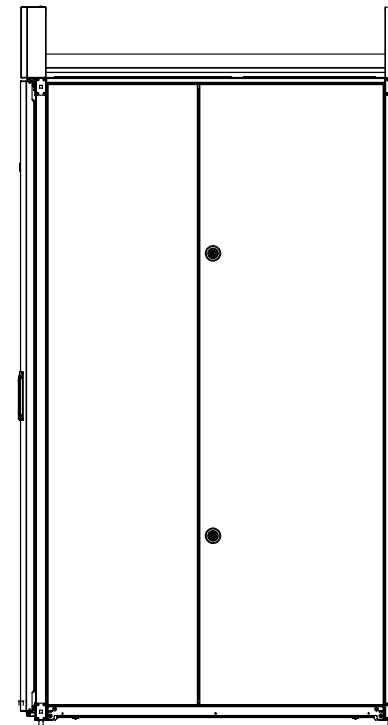
2

1

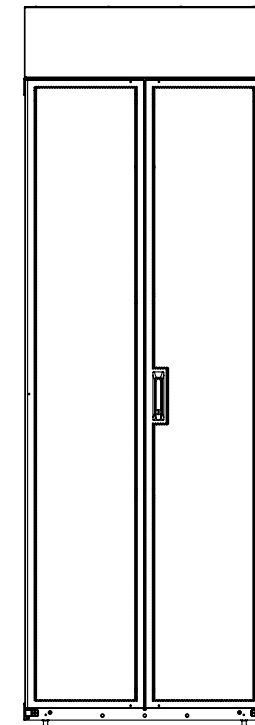
THIS COPY IS PROVIDED ON A RESTRICTED BASIS AND IS NOT TO BE USED IN ANY WAY DETRIMENTAL TO THE INTERESTS OF PANDUIT CORP.



FRONT VIEW



RIGHT VIEW



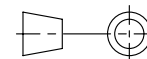
REAR VIEW

A

A

01A	11-25-14	PBS	ADP	TCN	SEE SHEET 1 OF 5 FOR REVISIONS	V09000BX
00A	7-07-14	MDCA	ROJC	TCN	SEE SHEET 1 OF 5 FOR REVISIONS	12V352CF-DC
REV	DATE	BY	CHK	APR	DESCRIPTION	ECN

TITLE NET-ACCESS S-TYPE CABINET W/INTEGRAL CABINET TOP CABLE ROUTING SYSTEM - NO CASTERS 800mm WIDE X 1200mm DEEP FAMILY CUSTOMER DRAWING	
ITEM REVISION NAME 12V352CF/01.PRT	<b>PANDUIT</b>
DATASET FILE NAME 12V352CF_DC/01A.PRT	
	MATERIAL:  N/A
DRAWING NUMBER: 12V352CF-DC	
DRAWN BY MDCA	DATE 7-07-14
CHK ROJC	SCALE NONE
SHT 3 OF 5	
A	

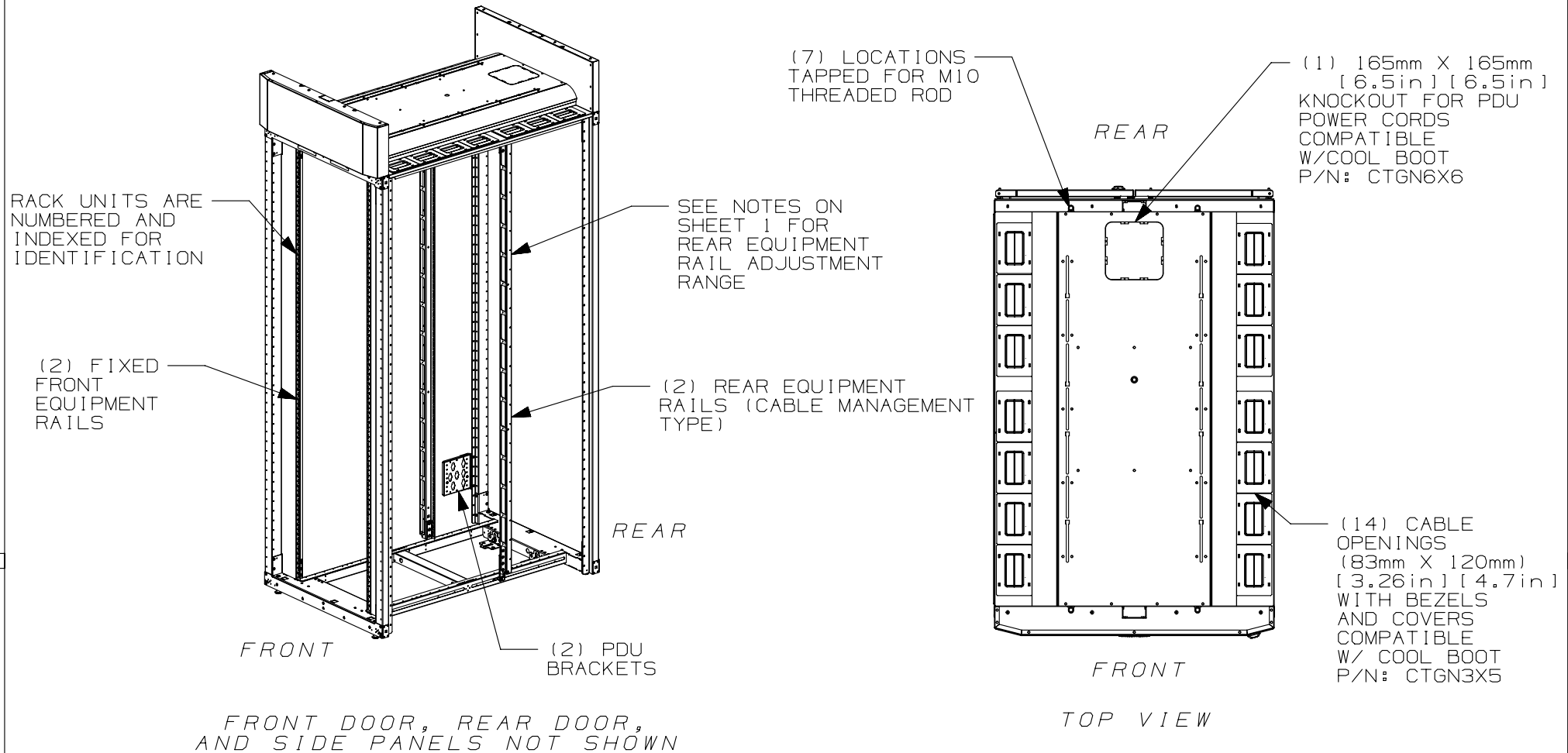



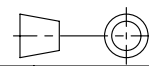
THIRD ANGLE  
PROJECTION

2

1

THIS COPY IS PROVIDED ON A RESTRICTED BASIS AND IS NOT TO BE USED IN ANY WAY DETRIMENTAL TO THE INTERESTS OF PANDUIT CORP.

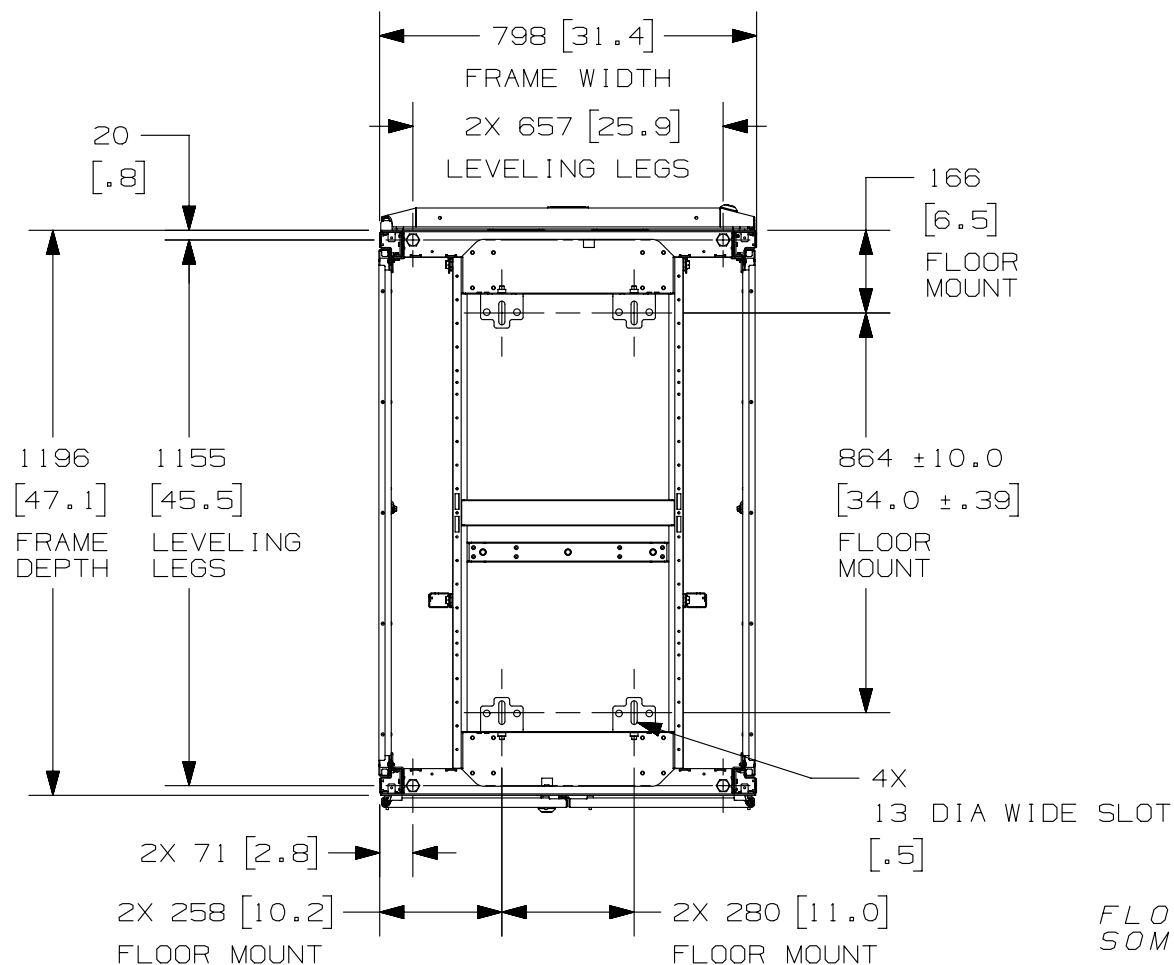


							TITLE NET-ACCESS S-TYPE CABINET W/INTEGRAL CABINET TOP CABLE ROUTING SYSTEM - NO CASTERS 800mm WIDE X 1200mm DEEP FAMILY CUSTOMER DRAWING						
							ITEM REVISION NAME 12V352CF/01.PRT						
							DATASET FILE NAME 12V352CF_DC/01A.PRT						
										MATERIAL:  N/A			
01A	11-25-14	PBS	ADP	TCN	SEE SHEET 1 OF 5 FOR REVISIONS	V09000BX	 THIRD ANGLE PROJECTION					DRAWING NUMBER: 12V352CF - DC	
00A	7-07-14	MDCA	ROJC	TCN	SEE SHEET 1 OF 5 FOR REVISIONS	12V352CF - DC							
REV	DATE	BY	CHK	APR	DESCRIPTION	ECN	DRAWN BY	DATE	CHK	SCALE	SIZE		
							MDCA	7-07-14	ROJC	NONE	SHT 4 OF 5 A		

2

1

THIS COPY IS PROVIDED ON A RESTRICTED BASIS AND IS NOT TO BE USED IN ANY WAY DETRIMENTAL TO THE INTERESTS OF PANDUIT CORP.



FLOOR MOUNTING HOLE LOCATIONS -  
SOME PARTS REMOVED FOR CLARITY

01A	11-25-14	PBS	ADP	TCN	SEE SHEET 1 OF 5 FOR REVISIONS	V09000BX
00A	7-07-14	MDCA	ROJC	TCN	SEE SHEET 1 OF 5 FOR REVISIONS	12V352CF-DC
REV	DATE	BY	CHK	APR	DESCRIPTION	ECN

TITLE NET-ACCESS S-TYPE CABINET W/INTEGRAL CABINET TOP CABLE ROUTING SYSTEM - NO CASTERS 800mm WIDE X 1200mm DEEP FAMILY CUSTOMER DRAWING	
ITEM REVISION NAME 12V352CF/01.PRT	<b>PANDUIT</b>
DATASET FILE NAME 12V352CF_DC/01A.PRT	
	MATERIAL:  N/A
DRAWING NUMBER: 12V352CF-DC	
DRAWN BY MDCA	DATE 7-07-14
CHK ROJC	SCALE NONE
THIRD ANGLE PROJECTION	
SHT 5 OF 5	SIZE A

2

1