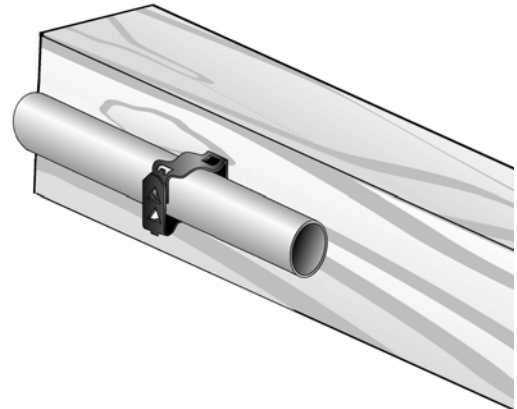
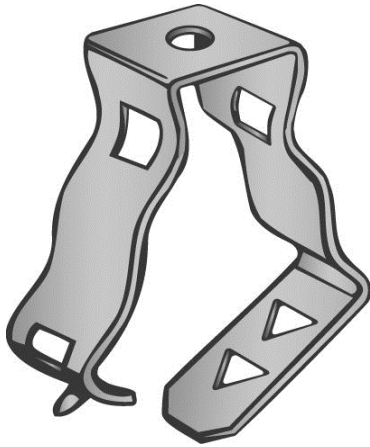


Part Number: P812M

Product Description: SNAP CLOSE CONDUIT CLIP FOR 1/2" - 3/4" CONDUIT WITH PLAIN MOUNTING HOLE

**Material Specifications**

Type: High Carbon Steel, Spring Tempered

Finish: Zinc Phosphate and Oil

Color: Black

Function Specifications**Compatible Wires and Cables**

AC/MC CABLE (OD):

Drop Wire:

Plain Rod (in):

Threaded Rods and Bolts

Tapped Holes:

Clearance Holes (in): 1/4

Threaded Rod Size (in):

Compatible Conduit

EMT Size (in): 1/2 and 3/4

Rigid/IMC (in): 1/2 and 3/4

Compatible Flanges and Studs

Flange Size (in):

Metal Stud Size (ins):

Static Load Rating

Vertical (lbs): 100

Horizontal (lbs): 25

Other**Codes and Regulatory**Regulatory
Certifications: UL/cUL

Country of Origin: US

Packaging

General Packaging: Cardboard Box

Box Size: 8.25 X 6.25 X 6

Pieces per Package: 100

Other Box Features:

Document Information

Created By: DBLA

Checked By: DJW

Approved By: KLN

Customer Specification #: C11243

Revision Level: 01

ECN #: GAECN01482

Date: 12/10/2013